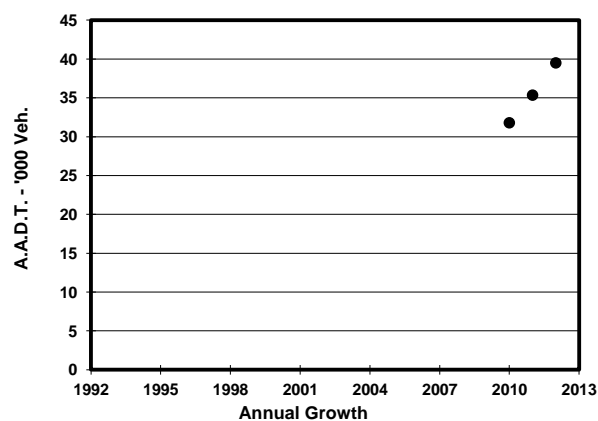
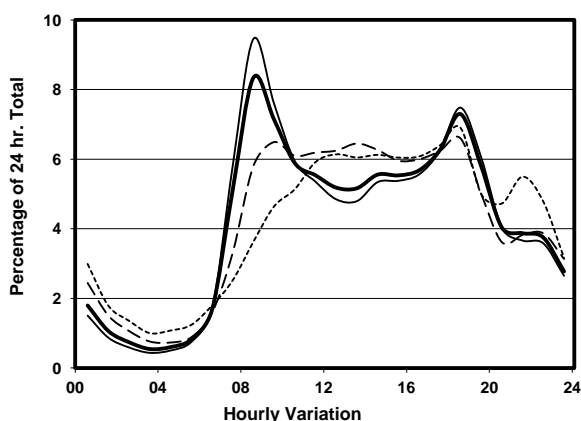
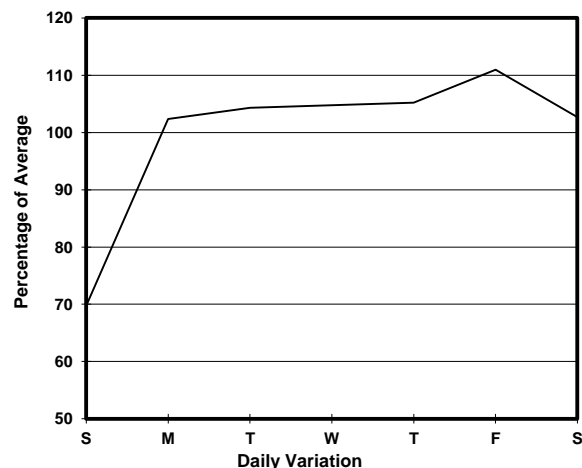
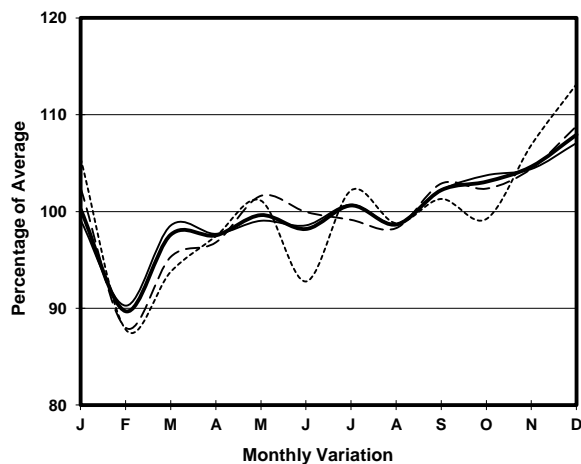


YEAR 2012  
CORE STATION 5037  
ROAD NETWORK MAJOR  
ROAD TYPE EXPRESSWAY

LINK EAGLE'S NEST TUNNEL (from TOLL PLAZA to SOUTH PORTAL)



## 1. TRAFFIC FLOW VARIATION AND GROWTH



## 2. TRAFFIC CHARACTERISTICS (BY DIRECTION)

Parameter	All - Day	Mon. - Fri.	Sat.	Sun.
<b>SOUTH BOUND</b>				
A.A.D.T.	19360	20680	20340	13960
R 12 / 24 - %	78.3	79.8	75.6	70.3
R 16 / 24 - %	91.2	92	89.4	87.5
AM Peak Hour	0800-0900	0800-0900	0900-1000	0900-1000
One-way flow at AM peak hour	2190	2690	1610	790
T - % (AM)	-	10	-	-
PM Peak Hour	1800-1900	1800-1900	1800-1900	1800-1900
One-way flow at PM peak hour	1160	1190	1270	1010
T - % (PM)	-	14.6	-	-
Prop.of commercial vehicles - 16 hr.	-	17.3	-	-
<b>NORTH BOUND</b>				
A.A.D.T.	20140	21620	20930	14200
R 12 / 24 - %	67.2	67.9	67.7	60.9
R 16 / 24 - %	89	90.2	86.4	83.7
AM Peak Hour	0900-1000	0800-0900	0900-1000	0900-1000
One-way flow at AM peak hour	1140	1310	1070	510
T - % (AM)	-	23.9	-	-
PM Peak Hour	1800-1900	1800-1900	1800-1900	1800-1900
One-way flow at PM peak hour	1720	1970	1450	930
T - % (PM)	-	10.7	-	-
Prop.of commercial vehicles - 16 hr.	-	19.3	-	-

## 3. OTHER INFORMATION AND COMMENT

**4. Vehicle classification and occupancy - Monday to Friday**

Time		Class of vehicle									
		Motor Cycle	Private Car	Taxi	Private LB	PLB	Goods veh.		Non Fr. Bus	Fr. Bus	
							Light	M & H		SD	DD
0700-0800	Pro	2.6	30.4	24.3	1.2	0.0	20.5	18.9	2.2	0.0	0.1
	Ocp	1.1	1.4	2.4	11.2	0.0	1.5	1.1	24.2	0.0	12.4
0800-0900 Peak hour	Pro	1.5	48.2	21.4	0.0	0.0	14.5	11.9	2.4	0.0	0.1
	Ocp	1.2	1.4	2.1	0.0	0.0	1.6	1.2	25.7	0.0	27.2
0900-1000	Pro	1.1	45.8	15.3	0.4	0.0	19.9	15.4	2.1	0.1	0.1
	Ocp	1.1	1.3	2.0	3.0	0.0	1.4	1.3	10.7	1.0	15.5
1000-1100	Pro	0.7	32.1	17.2	0.5	0.0	24.5	23.8	1.2	0.0	0.1
	Ocp	1.0	1.3	1.9	2.0	0.0	1.5	1.3	1.1	0.0	1.0
1100-1200	Pro	0.4	35.7	19.5	0.6	0.0	22.0	20.9	0.8	0.0	0.1
	Ocp	1.0	1.3	2.1	7.0	0.0	1.5	1.3	13.0	0.0	1.0
1200-1300	Pro	0.6	40.7	13.9	0.2	0.0	21.5	21.5	1.6	0.0	0.1
	Ocp	1.0	1.4	2.1	2.0	0.0	1.5	1.3	14.4	0.0	1.0
1300-1400	Pro	0.4	29.6	14.4	0.4	0.0	27.4	26.7	1.0	0.0	0.1
	Ocp	1.0	1.3	2.1	2.0	0.0	1.7	1.2	3.8	0.0	1.0
1400-1500	Pro	1.1	36.7	13.8	0.2	0.0	24.4	22.2	1.7	0.0	0.1
	Ocp	1.0	1.4	1.9	7.0	0.0	1.6	1.2	13.4	0.0	1.0
1500-1600	Pro	1.7	34.6	12.7	0.6	0.0	26.6	23.1	0.7	0.0	0.1
	Ocp	1.1	1.4	1.8	5.7	0.0	1.5	1.1	11.5	0.0	1.0
1600-1700	Pro	0.5	39.4	16.7	0.2	0.0	23.4	17.6	2.2	0.0	0.1
	Ocp	1.3	1.4	1.8	11.0	0.0	1.6	1.3	6.8	0.0	1.0
1700-1800	Pro	2.3	42.0	13.5	1.4	0.0	20.1	18.4	2.3	0.0	0.1
	Ocp	1.1	1.4	2.1	2.1	0.0	1.5	1.2	15.1	0.0	21.8
1800-1900	Pro	1.1	58.6	14.4	0.1	0.0	13.6	9.8	2.3	0.0	0.1
	Ocp	1.3	1.3	2.6	2.0	0.0	1.6	1.2	12.9	0.0	38.3
1900-2000	Pro	1.3	64.1	15.8	0.0	0.0	8.3	8.9	1.6	0.0	0.1
	Ocp	1.3	1.4	2.1	0.0	0.0	1.5	1.1	14.7	0.0	15.5
2000-2100	Pro	0.6	64.4	15.6	0.0	0.0	7.6	10.4	1.5	0.0	0.1
	Ocp	1.0	1.4	2.4	0.0	0.0	1.5	1.1	11.9	0.0	19.9
2100-2200	Pro	1.5	49.6	24.9	0.3	0.0	8.7	13.9	1.2	0.0	0.1
	Ocp	1.4	1.8	2.4	3.0	0.0	1.4	1.1	3.0	0.0	1.0
2200-2300	Pro	1.4	55.6	27.2	0.0	0.0	7.1	7.9	0.8	0.0	0.1
	Ocp	1.2	1.4	2.0	0.0	0.0	1.2	1.3	6.7	0.0	1.0
16 hours	Pro	1.2	44.7	17.3	0.4	0.0	18.2	16.6	1.7	0.1	0.1
	Ocp	1.1	1.4	2.1	5.0	0.0	1.5	1.2	14.2	1.0	15.3

**Legend**

- Pro.** Proportion of vehicles in % (Sum may not add up to 100% due to figure rounding)
- Ocp.** Average occupancy of vehicles
- M&H** Medium and Heavy