

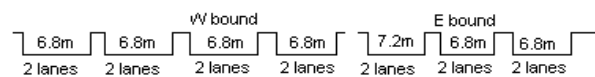
YEAR 2012

CORE STATION 1003

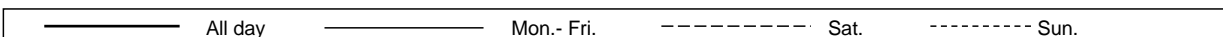
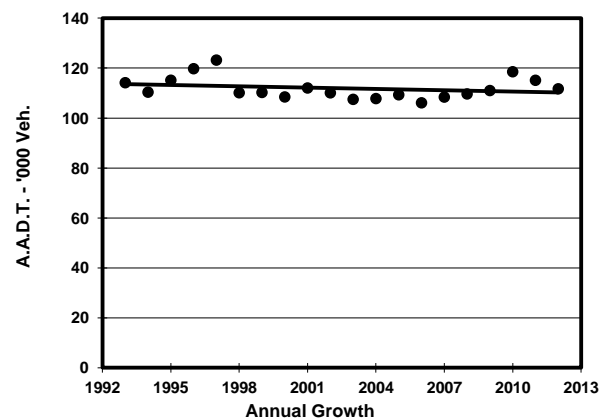
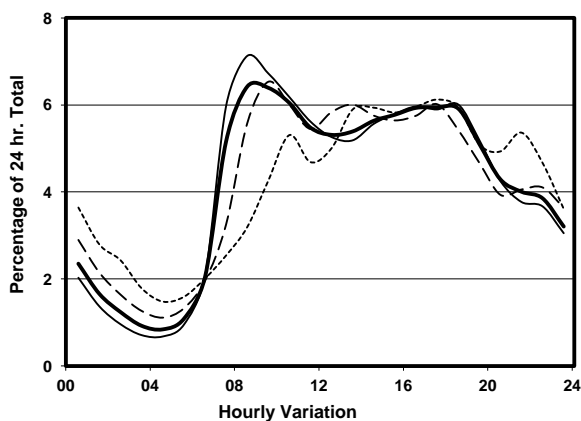
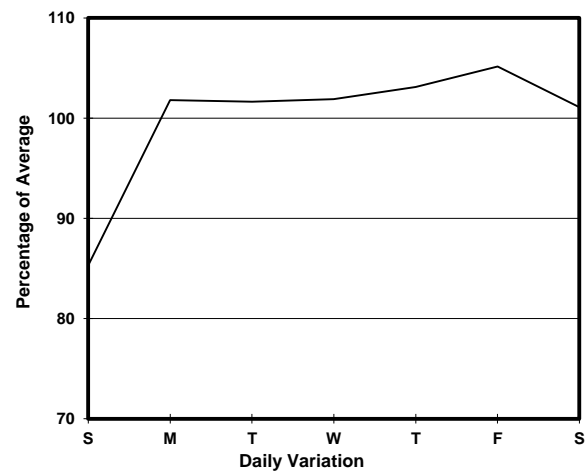
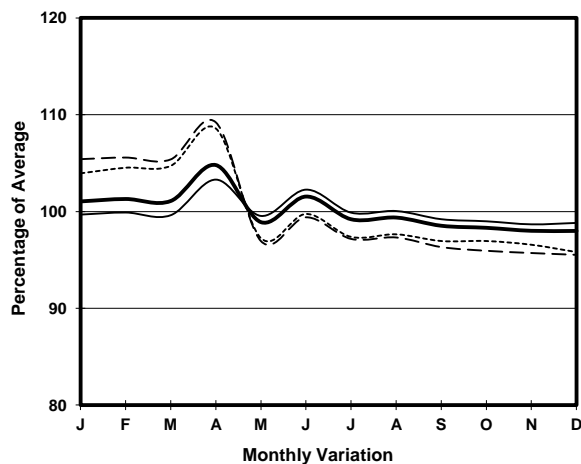
ROAD NETWORK MAJOR

ROAD TYPE EXPRESSWAY

LINK ISLAND EASTERN CORRIDOR (from HEALTHY ST INT EASTERN END to TAIKOO SHING INT WESTERN END)



1. TRAFFIC FLOW VARIATION AND GROWTH



2. TRAFFIC CHARACTERISTICS (BY DIRECTION)

Parameter	All - Day	Mon. - Fri.	Sat.	Sun.
EAST BOUND				
A.A.D.T.	51560	52820	54080	45500
R 12 / 24 - %	65.6	67.1	63.8	59.5
R 16 / 24 - %	85.2	86.7	82.4	80.4
AM Peak Hour	0900-1000	0900-1000	0900-1000	0900-1000
One-way flow at AM peak hour	3180	3500	3010	1940
T - % (AM)	-	-	-	-
PM Peak Hour	1600-1700	1800-1900	1600-1700	1800-1900
One-way flow at PM peak hour	3040	3120	3220	2690
T - % (PM)	-	-	-	-
Prop.of commercial vehicles - 16 hr.	-	-	-	-
WEST BOUND				
A.A.D.T.	60140	62800	59210	51030
R 12 / 24 - %	72.7	74.9	70.4	61.7
R 16 / 24 - %	87.9	89.5	85.5	80.9
AM Peak Hour	0800-0900	0800-0900	0900-1000	0900-1000
One-way flow at AM peak hour	4330	4980	4390	2170
T - % (AM)	-	-	-	-
PM Peak Hour	1700-1800	1800-1900	1700-1800	1700-1800
One-way flow at PM peak hour	3690	3830	3630	3290
T - % (PM)	-	-	-	-
Prop.of commercial vehicles - 16 hr.	-	-	-	-

3. OTHER INFORMATION AND COMMENT