

YEAR

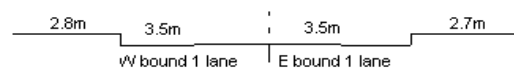
2012

LINK

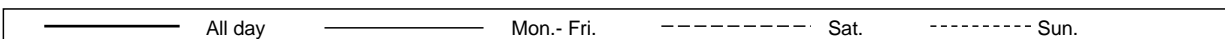
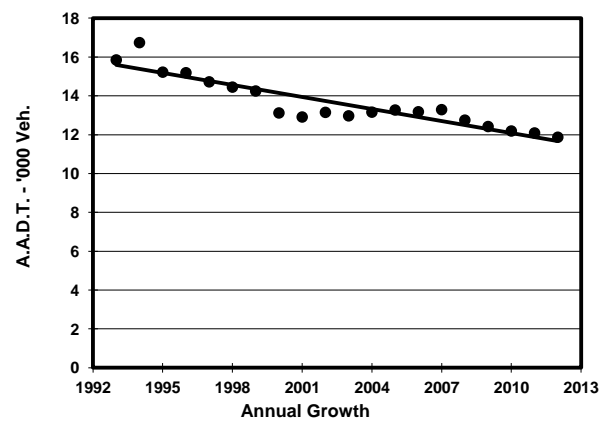
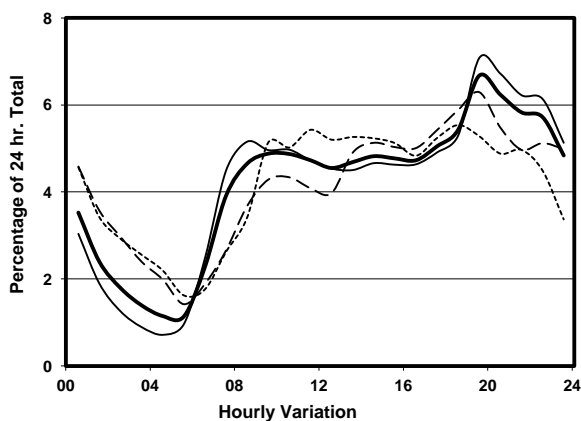
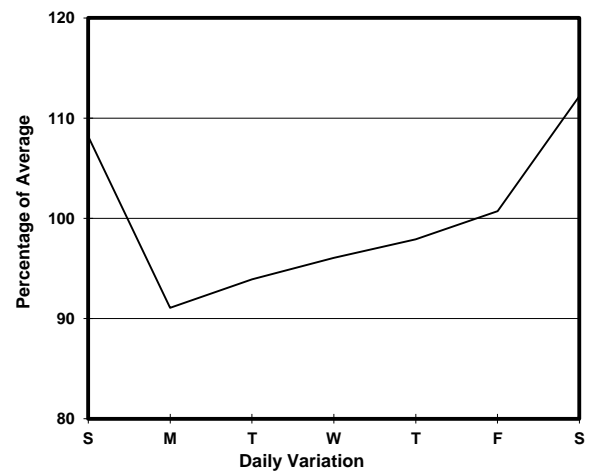
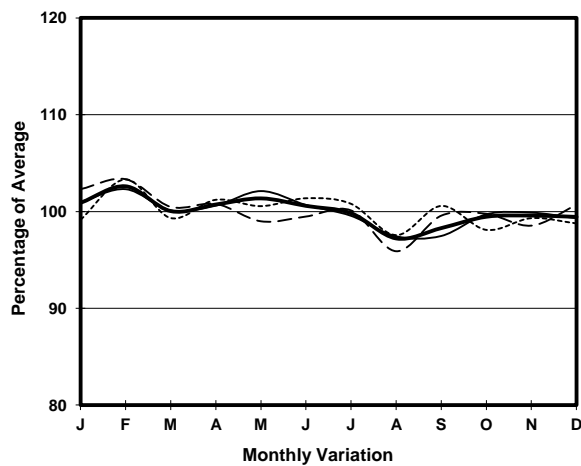
CAINE RD (from SEYMOUR RD to ABERDEEN ST)

CORE STATION
ROAD NETWORK
ROAD TYPE

1013
MAJOR
DISTRICT DISTRIBUTOR



1. TRAFFIC FLOW VARIATION AND GROWTH



2. TRAFFIC CHARACTERISTICS (BY DIRECTION)

Parameter	All - Day	Mon. - Fri.	Sat.	Sun.
EAST BOUND				
A.A.D.T.	8420	8350	9040	7940
R 12 / 24 - %	60.8	62.6	56.2	56.7
R 16 / 24 - %	82.3	84.9	76.4	75.4
AM Peak Hour	0900-1000	0800-0900	0900-1000	0900-1000
One-way flow at AM peak hour	450	480	460	380
T - % (AM)	-	-	-	-
PM Peak Hour	1800-1900	1800-1900	1800-1900	1800-1900
One-way flow at PM peak hour	490	500	500	440
T - % (PM)	-	-	-	-
Prop.of commercial vehicles - 16 hr.	-	-	-	-
WEST BOUND				
A.A.D.T.	3450	2990	4200	4830
R 12 / 24 - %	48	43.3	50.4	60.2
R 16 / 24 - %	79.7	80.3	75.9	81.3
AM Peak Hour	0900-1000	0700-0800	0900-1000	0900-1000
One-way flow at AM peak hour	130	130	110	280
T - % (AM)	-	-	-	-
PM Peak Hour	1700-1800	1600-1700	1800-1900	1700-1800
One-way flow at PM peak hour	160	110	280	270
T - % (PM)	-	-	-	-
Prop.of commercial vehicles - 16 hr.	-	-	-	-

3. OTHER INFORMATION AND COMMENT