

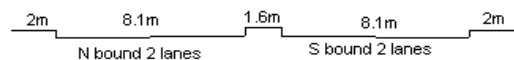
YEAR 2012

CORE STATION 1017

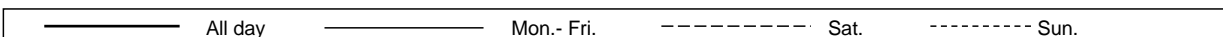
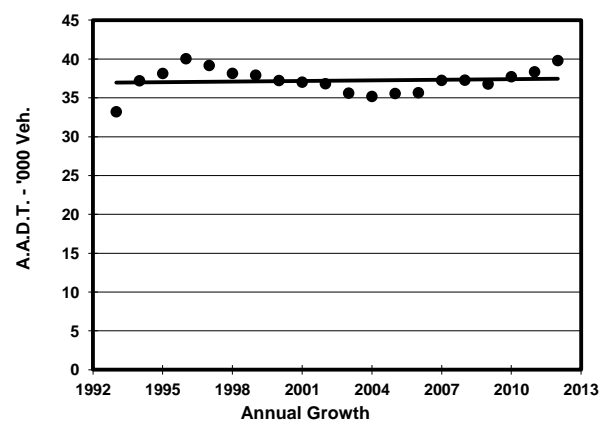
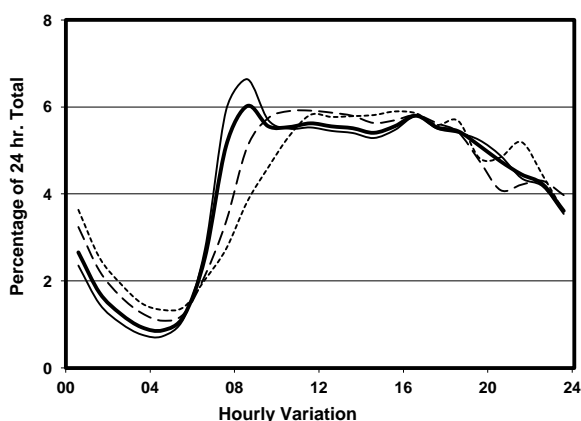
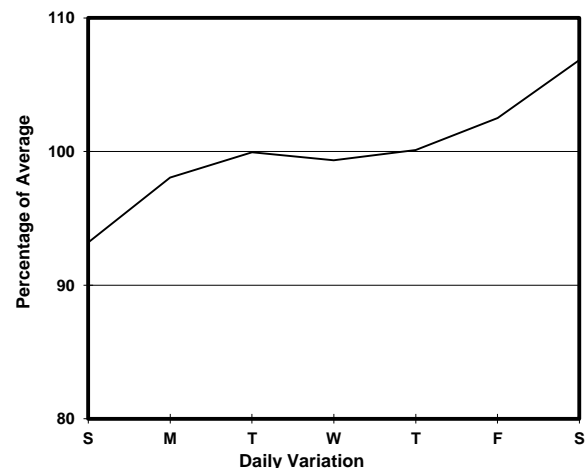
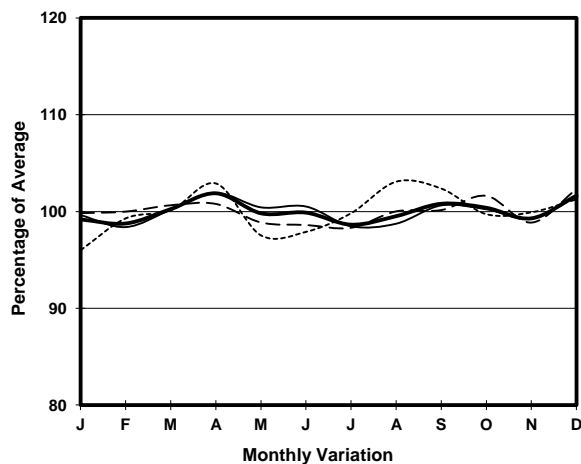
ROAD NETWORK MAJOR

ROAD TYPE DISTRICT DISTRIBUTOR

LINK AP LEI CHAU BRIDGE & AP LEI CHAU BRIDGE RD
(from WONG CHUK HANG RD to AP LEI CHAU EST)



1. TRAFFIC FLOW VARIATION AND GROWTH



2. TRAFFIC CHARACTERISTICS (BY DIRECTION)

Parameter	All - Day	Mon. - Fri.	Sat.	Sun.
SOUTH BOUND				
A.A.D.T.	19740	19790	21140	18540
R 12 / 24 - %	64.2	65	63.5	60.5
R 16 / 24 - %	84.7	85.8	82.4	81.5
AM Peak Hour	0800-0900	0800-0900	0900-1000	0900-1000
One-way flow at AM peak hour	1050	1160	1110	750
T - % (AM)	-	-	-	-
PM Peak Hour	1600-1700	1800-1900	1600-1700	1600-1700
One-way flow at PM peak hour	1160	1150	1260	1110
T - % (PM)	-	-	-	-
Prop.of commercial vehicles - 16 hr.	-	-	-	-
NORTH BOUND				
A.A.D.T.	20060	20150	21550	18690
R 12 / 24 - %	69.1	70.1	68.1	64.9
R 16 / 24 - %	85.7	86.6	83.9	82.6
AM Peak Hour	0800-0900	0800-0900	0900-1000	0900-1000
One-way flow at AM peak hour	1350	1490	1340	970
T - % (AM)	-	-	-	-
PM Peak Hour	1600-1700	1600-1700	1700-1800	1800-1900
One-way flow at PM peak hour	1150	1160	1260	1100
T - % (PM)	-	-	-	-
Prop.of commercial vehicles - 16 hr.	-	-	-	-

3. OTHER INFORMATION AND COMMENT