

YEAR 2012

CORE STATION 1028

ROAD NETWORK MAJOR

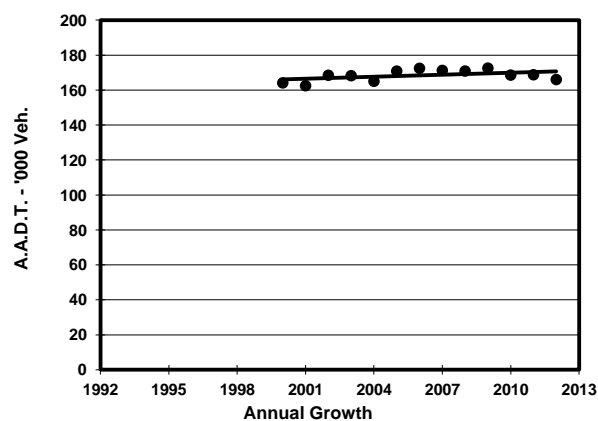
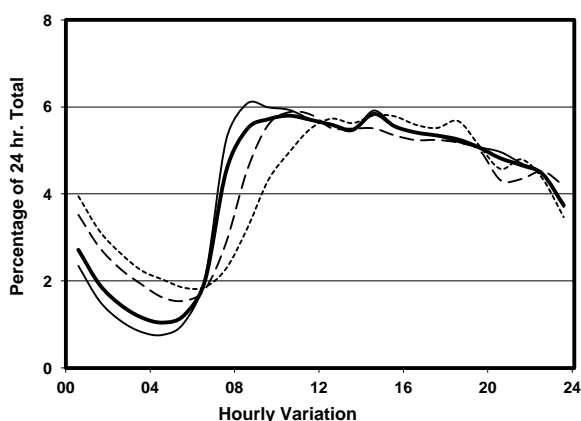
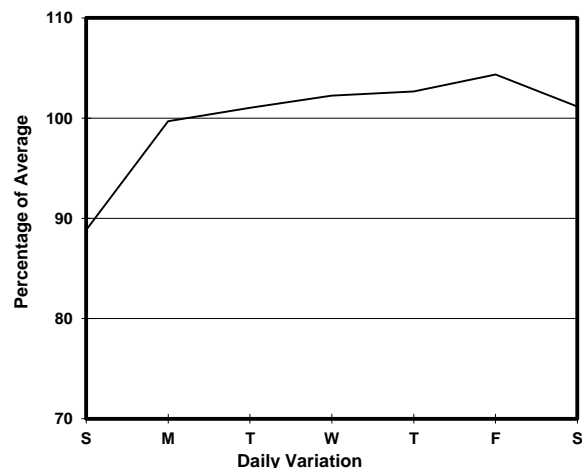
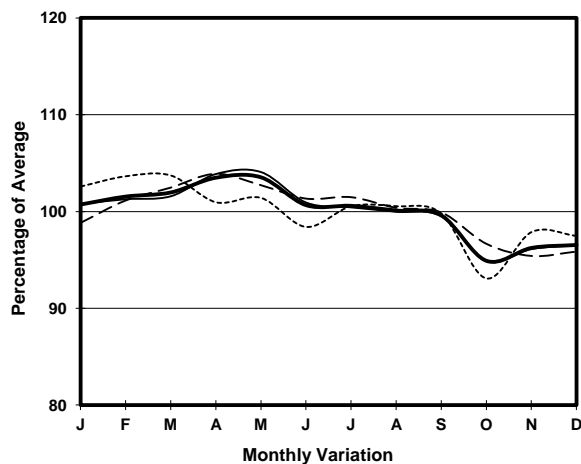
ROAD TYPE URBAN TRUNK ROAD

LINK GLOUCESTER RD (from ARSENAL ST to CROSS HARBOUR TUNNEL S. INT)

6.5m 15.8m 2.8m 19m 5.3m

E bound 5 lanes W bound 5 lanes

1. TRAFFIC FLOW VARIATION AND GROWTH



— All day — Mon.- Fri. - - - Sat. - . - Sun.

2. TRAFFIC CHARACTERISTICS (BY DIRECTION)

Parameter	All - Day	Mon. - Fri.	Sat.	Sun.
EAST BOUND				
A.A.D.T.	77360	79820	76720	68960
R 12 / 24 - %	64.9	66.7	61	58.7
R 16 / 24 - %	84.5	86.7	79.2	77.8
AM Peak Hour	0900-1000	0900-1000	0900-1000	0900-1000
One-way flow at AM peak hour	4400	4810	4200	2780
T - % (AM)	-	-	-	-
PM Peak Hour	1600-1700	1600-1700	1600-1700	1600-1700
One-way flow at PM peak hour	4140	4260	4000	3880
T - % (PM)	-	-	-	-
Prop.of commercial vehicles - 16 hr.	-	-	-	-
WEST BOUND				
A.A.D.T.	88680	90660	91960	79260
R 12 / 24 - %	66.5	68	63.2	61.1
R 16 / 24 - %	85	86.6	81.4	79.7
AM Peak Hour	0900-1000	0800-0900	0900-1000	0900-1000
One-way flow at AM peak hour	5100	5700	5220	3620
T - % (AM)	-	-	-	-
PM Peak Hour	1700-1800	1700-1800	1700-1800	1800-1900
One-way flow at PM peak hour	4900	5060	4890	4580
T - % (PM)	-	-	-	-
Prop.of commercial vehicles - 16 hr.	-	-	-	-

3. OTHER INFORMATION AND COMMENT