

YEAR

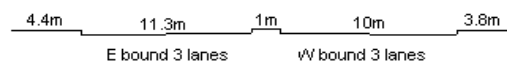
2012

LINK

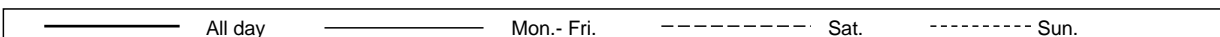
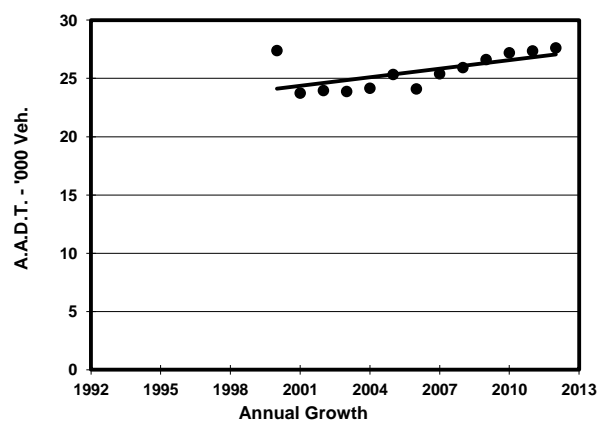
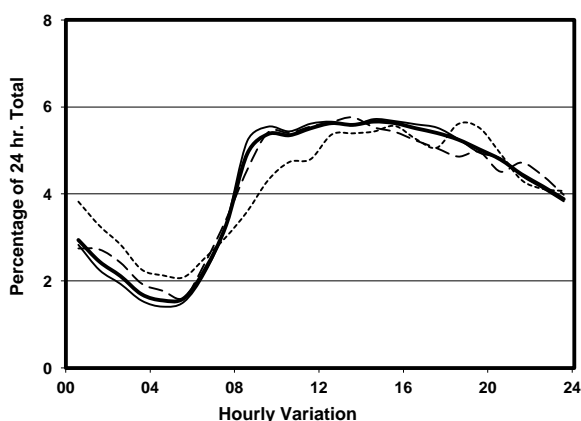
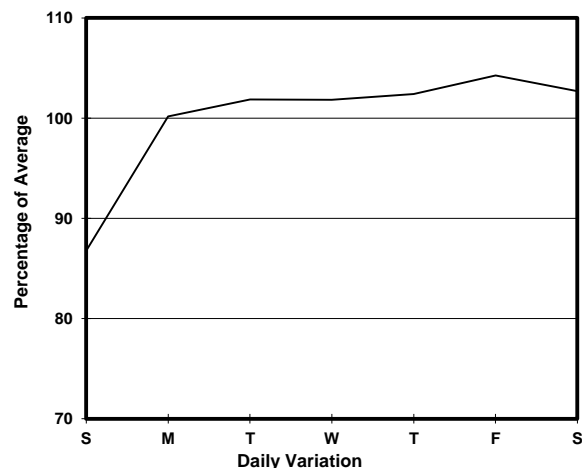
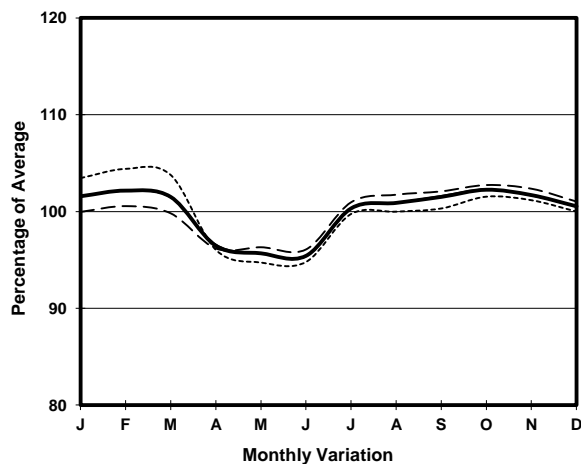
HENNESSY RD (from LUARD RD to FLEMING RD)

CORE STATION
ROAD NETWORK
ROAD TYPE

1029
MAJOR
PRIMARY DISTRIBUTOR



1. TRAFFIC FLOW VARIATION AND GROWTH



2. TRAFFIC CHARACTERISTICS (BY DIRECTION)

Parameter	All - Day	Mon. - Fri.	Sat.	Sun.
EAST BOUND				
A.A.D.T.	14980	15420	15750	12790
R 12 / 24 - %	61.9	63.2	60.4	56.6
R 16 / 24 - %	80	81.2	78.8	74.7
AM Peak Hour	0900-1000	0900-1000	0900-1000	0900-1000
One-way flow at AM peak hour	780	840	800	510
T - % (AM)	-	-	-	-
PM Peak Hour	1600-1700	1600-1700	1600-1700	1800-1900
One-way flow at PM peak hour	820	860	820	720
T - % (PM)	-	-	-	-
Prop.of commercial vehicles - 16 hr.	-	-	-	-
WEST BOUND				
A.A.D.T.	12640	12980	12850	11310
R 12 / 24 - %	64.4	65.4	63.6	59.9
R 16 / 24 - %	83.3	84.1	82.4	79.7
AM Peak Hour	0900-1000	0900-1000	0900-1000	0900-1000
One-way flow at AM peak hour	700	740	750	530
T - % (AM)	-	-	-	-
PM Peak Hour	1700-1800	1700-1800	1700-1800	1800-1900
One-way flow at PM peak hour	730	770	710	640
T - % (PM)	-	-	-	-
Prop.of commercial vehicles - 16 hr.	-	-	-	-

3. OTHER INFORMATION AND COMMENT