

YEAR

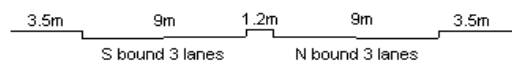
2012

LINK

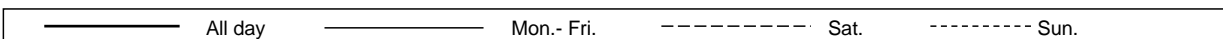
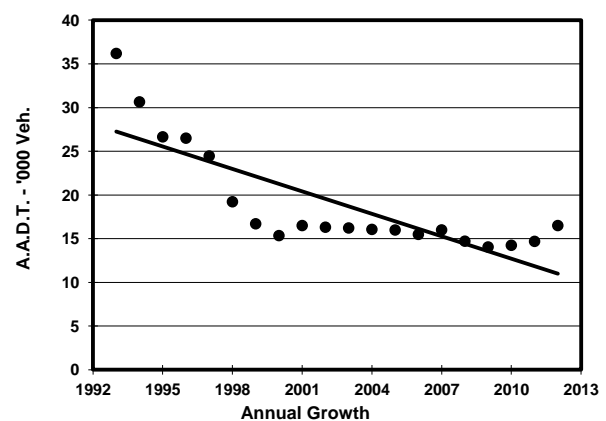
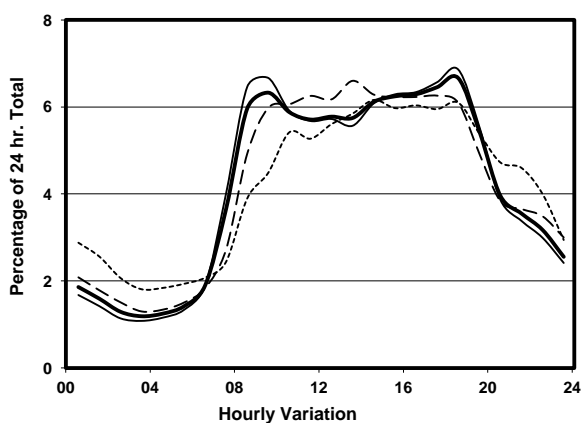
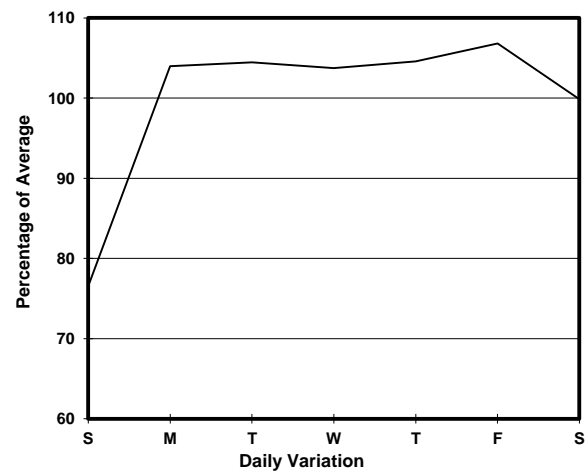
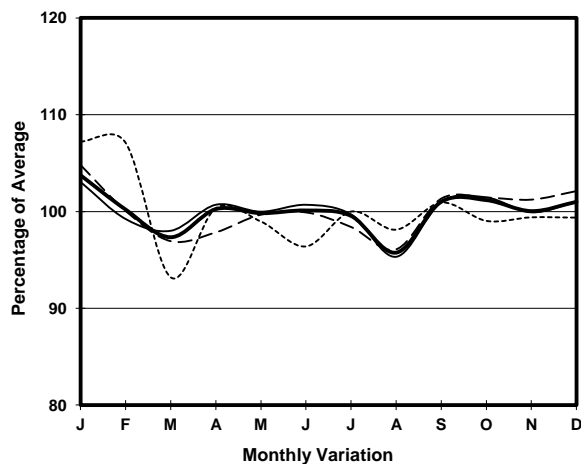
LAI CHI KOK RD (from TONKIN ST to HING WAH ST)

CORE STATION
ROAD NETWORK
ROAD TYPE

3008
MAJOR
PRIMARY DISTRIBUTOR



1. TRAFFIC FLOW VARIATION AND GROWTH



2. TRAFFIC CHARACTERISTICS (BY DIRECTION)

Parameter	All - Day	Mon. - Fri.	Sat.	Sun.
SOUTH BOUND				
A.A.D.T.	7380	7680	7660	6260
R 12 / 24 - %	70.4	71.5	70.2	64.6
R 16 / 24 - %	86.4	87.1	85.7	82.7
AM Peak Hour	0900-1000	0900-1000	0900-1000	0900-1000
One-way flow at AM peak hour	420	460	440	270
T - % (AM)	-	-	-	-
PM Peak Hour	1800-1900	1800-1900	1600-1700	1800-1900
One-way flow at PM peak hour	490	520	490	410
T - % (PM)	-	-	-	-
Prop.of commercial vehicles - 16 hr.	-	-	-	-
NORTH BOUND				
A.A.D.T.	9120	9800	9040	6590
R 12 / 24 - %	71.2	72.7	69.4	61.9
R 16 / 24 - %	87.4	88.6	85.6	81.2
AM Peak Hour	0900-1000	0900-1000	0900-1000	0900-1000
One-way flow at AM peak hour	620	710	560	300
T - % (AM)	-	-	-	-
PM Peak Hour	1800-1900	1800-1900	1700-1800	1800-1900
One-way flow at PM peak hour	610	680	550	380
T - % (PM)	-	-	-	-
Prop.of commercial vehicles - 16 hr.	-	-	-	-

3. OTHER INFORMATION AND COMMENT