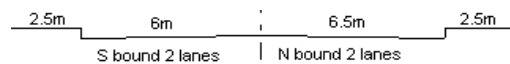


YEAR

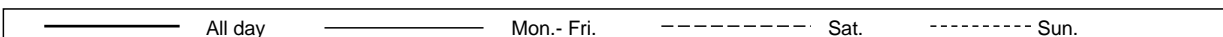
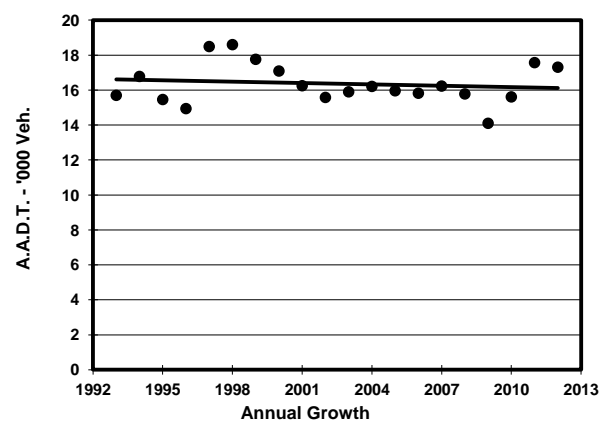
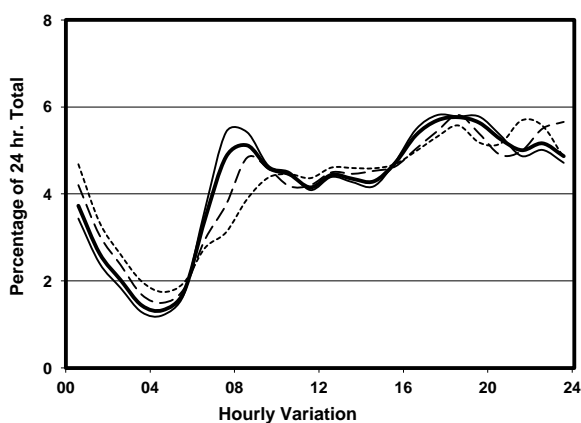
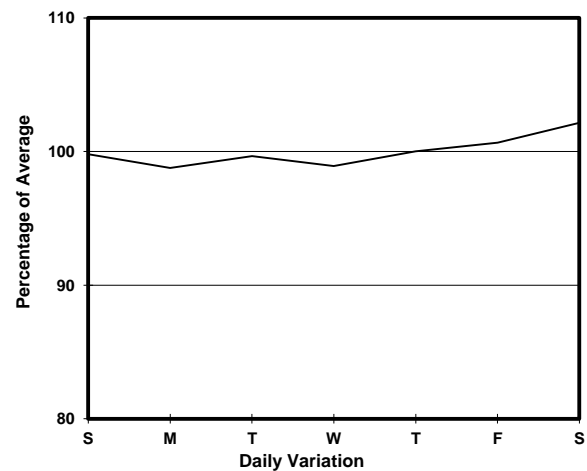
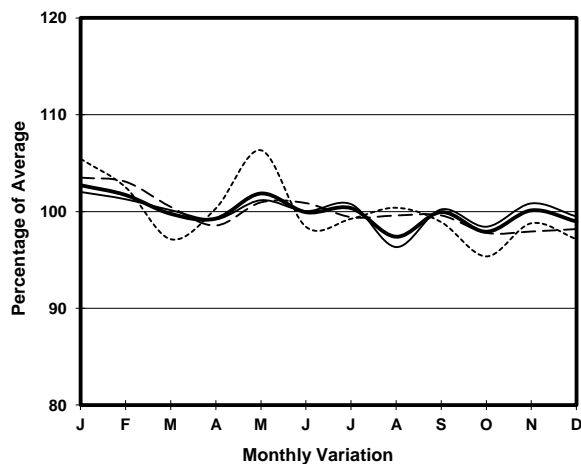
2012

LINK

HIU KWONG ST (from SAU MING RD to HIP WO ST)

CORE STATION
ROAD NETWORK
ROAD TYPE3018
MAJOR
DISTRICT DISTRIBUTOR

1. TRAFFIC FLOW VARIATION AND GROWTH



2. TRAFFIC CHARACTERISTICS (BY DIRECTION)

Parameter	All - Day	Mon. - Fri.	Sat.	Sun.
SOUTH BOUND				
A.A.D.T.	9190	9120	9490	9240
R 12 / 24 - %	56.4	57.1	55.1	54
R 16 / 24 - %	79.3	80.1	77.4	77.1
AM Peak Hour	0700-0800	0700-0800	0900-1000	0900-1000
One-way flow at AM peak hour	400	450	410	390
T - % (AM)	-	-	-	-
PM Peak Hour	1800-1900	1800-1900	1800-1900	1800-1900
One-way flow at PM peak hour	570	570	590	540
T - % (PM)	-	-	-	-
Prop.of commercial vehicles - 16 hr.	-	-	-	-
NORTH BOUND				
A.A.D.T.	8120	8120	8190	8050
R 12 / 24 - %	59.3	60.6	57.1	55.2
R 16 / 24 - %	78.3	79.3	76	75
AM Peak Hour	0800-0900	0800-0900	0800-0900	0900-1000
One-way flow at AM peak hour	490	520	450	370
T - % (AM)	-	-	-	-
PM Peak Hour	1700-1800	1700-1800	1800-1900	1800-1900
One-way flow at PM peak hour	450	450	440	430
T - % (PM)	-	-	-	-
Prop.of commercial vehicles - 16 hr.	-	-	-	-

3. OTHER INFORMATION AND COMMENT