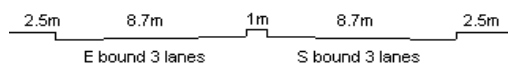


YEAR

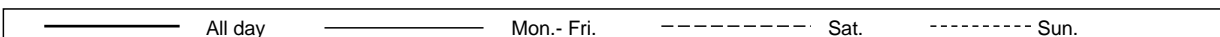
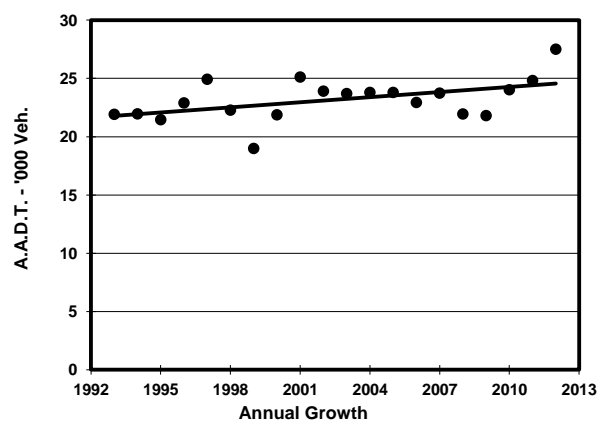
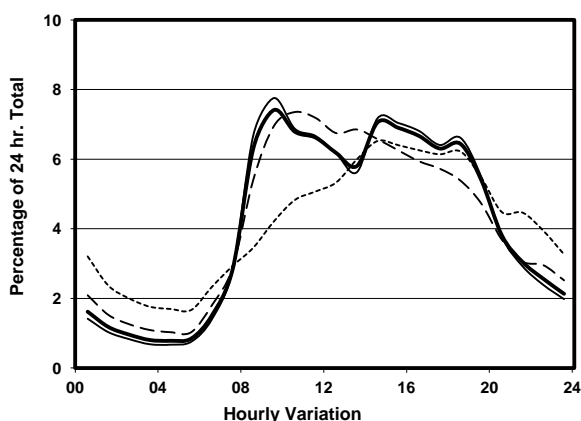
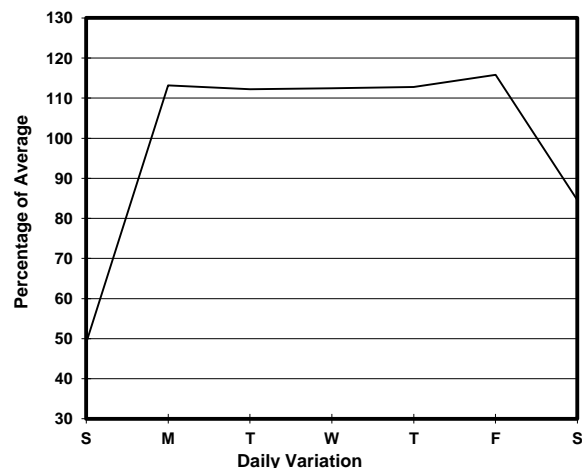
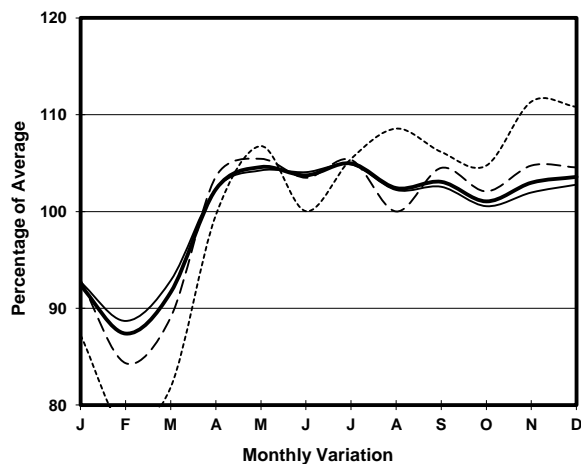
2012

LINK

WAI YIP ST (from LAI YIP ST to HOI YUEN RD)

CORE STATION  
ROAD NETWORK  
ROAD TYPE3020  
MAJOR  
DISTRICT DISTRIBUTOR

## 1. TRAFFIC FLOW VARIATION AND GROWTH



## 2. TRAFFIC CHARACTERISTICS (BY DIRECTION)

Parameter	All - Day	Mon. - Fri.	Sat.	Sun.
<b>EAST BOUND</b>				
A.A.D.T.	18550	21450	16360	9890
R 12 / 24 - %	76	77.3	73.9	65.4
R 16 / 24 - %	90.7	91.6	88.8	83.9
AM Peak Hour	0900-1000	0900-1000	0900-1000	0900-1000
One-way flow at AM peak hour	1460	1780	1210	450
T - % (AM)	-	-	-	-
PM Peak Hour	1600-1700	1600-1700	1600-1700	1600-1700
One-way flow at PM peak hour	1190	1400	960	630
T - % (PM)	-	-	-	-
Prop.of commercial vehicles - 16 hr.	-	-	-	-
<b>WEST BOUND</b>				
A.A.D.T.	8960	10610	7540	3940
R 12 / 24 - %	73.9	75.4	71.9	58.3
R 16 / 24 - %	89	90.4	85.3	76.4
AM Peak Hour	0900-1000	0900-1000	0900-1000	0900-1000
One-way flow at AM peak hour	580	710	460	130
T - % (AM)	-	-	-	-
PM Peak Hour	1800-1900	1800-1900	1600-1700	1700-1800
One-way flow at PM peak hour	660	820	460	260
T - % (PM)	-	-	-	-
Prop.of commercial vehicles - 16 hr.	-	-	-	-

## 3. OTHER INFORMATION AND COMMENT