

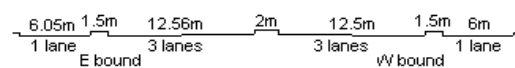
YEAR 2012

CORE STATION 3023

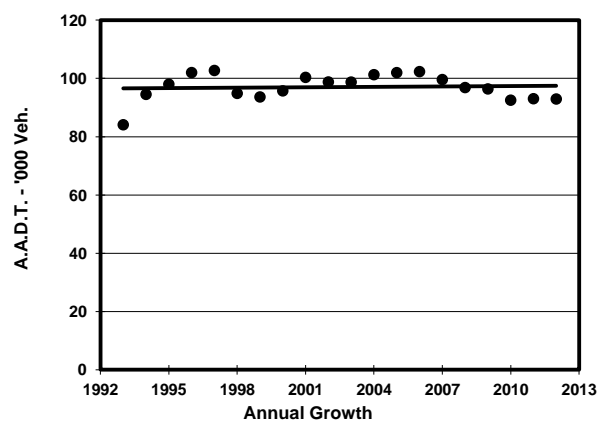
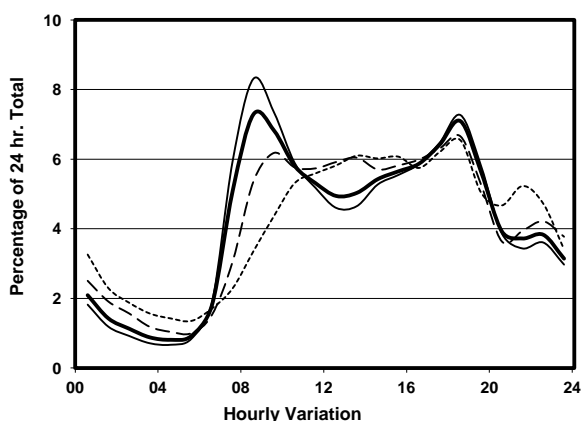
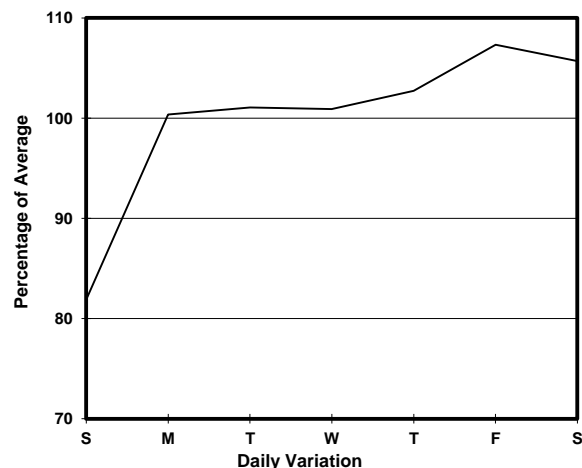
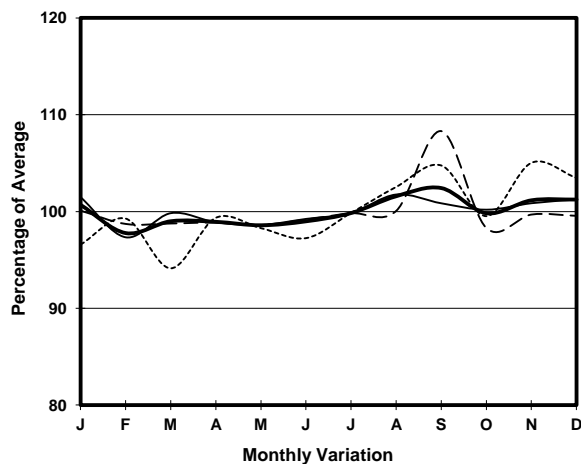
ROAD NETWORK MAJOR

ROAD TYPE EXPRESSWAY

LINK KWUN TONG BYPASS <K77> (from WAI YIP ST to CHEUNG YIP ST)



1. TRAFFIC FLOW VARIATION AND GROWTH



2. TRAFFIC CHARACTERISTICS (BY DIRECTION)

Parameter	All - Day	Mon. - Fri.	Sat.	Sun.
EAST BOUND				
A.A.D.T.	49600	51860	52160	39180
R 12 / 24 - %	69.6	71.4	67.1	60.8
R 16 / 24 - %	87.7	89	85	82.1
AM Peak Hour	0900-1000	0800-0900	0900-1000	0900-1000
One-way flow at AM peak hour	3360	3850	3050	1580
T - % (AM)	-	-	-	-
PM Peak Hour	1800-1900	1800-1900	1800-1900	1800-1900
One-way flow at PM peak hour	3620	3870	3500	2740
T - % (PM)	-	-	-	-
Prop.of commercial vehicles - 16 hr.	-	-	-	-
WEST BOUND				
A.A.D.T.	43340	44330	47140	37520
R 12 / 24 - %	72	73.4	70	66.2
R 16 / 24 - %	87.9	89	86.1	84.1
AM Peak Hour	0800-0900	0800-0900	0900-1000	0900-1000
One-way flow at AM peak hour	3520	4140	3090	1770
T - % (AM)	-	-	-	-
PM Peak Hour	1800-1900	1800-1900	1800-1900	1800-1900
One-way flow at PM peak hour	2970	3120	3110	2280
T - % (PM)	-	-	-	-
Prop.of commercial vehicles - 16 hr.	-	-	-	-

3. OTHER INFORMATION AND COMMENT