

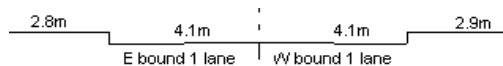
YEAR 2012

CORE STATION 3104

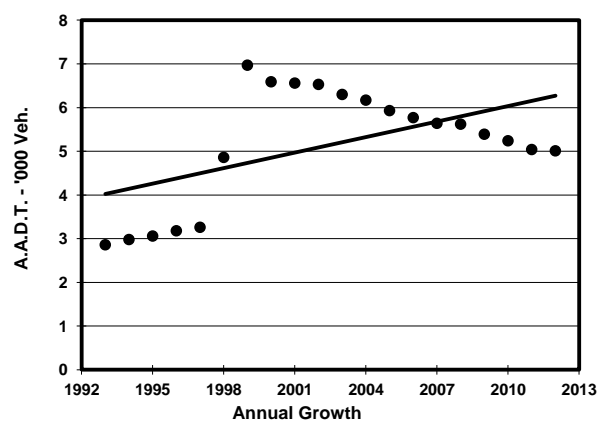
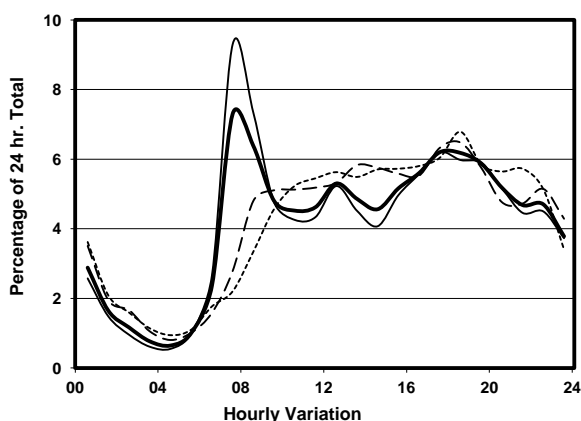
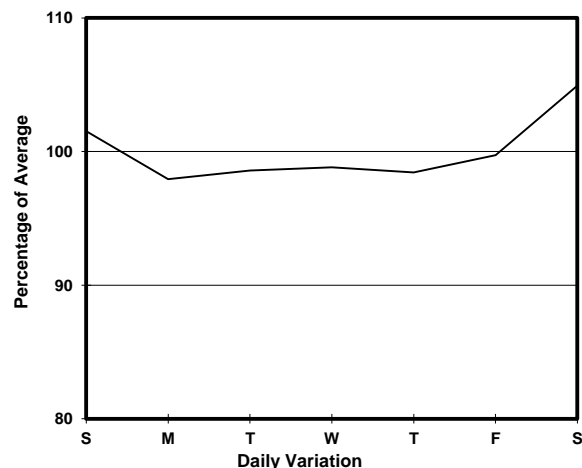
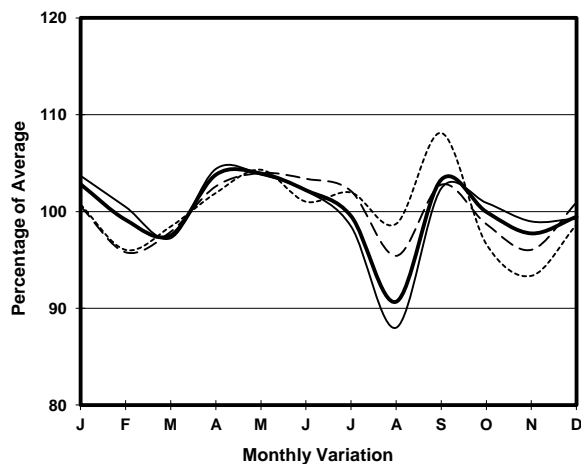
ROAD NETWORK MINOR

ROAD TYPE LOCAL DISTRIBUTOR

LINK KUNG LOK RD (from HONG NING RD to HONG NING RD)



1. TRAFFIC FLOW VARIATION AND GROWTH



2. TRAFFIC CHARACTERISTICS (BY DIRECTION)

| Parameter | All - Day | Mon. - Fri. | Sat. | Sun. |
|--------------------------------------|-----------|-------------|-----------|-----------|
| EAST BOUND | | | | |
| A.A.D.T. | 2570 | 2540 | 2700 | 2570 |
| R 12 / 24 - % | 69.8 | 70.8 | 68.4 | 66.7 |
| R 16 / 24 - % | 87 | 87.4 | 85.9 | 86.4 |
| AM Peak Hour | 0700-0800 | 0700-0800 | 0900-1000 | 0900-1000 |
| One-way flow at AM peak hour | 240 | 310 | 180 | 150 |
| T - % (AM) | - | - | - | - |
| PM Peak Hour | 1700-1800 | 1700-1800 | 1800-1900 | 1800-1900 |
| One-way flow at PM peak hour | 150 | 150 | 170 | 180 |
| T - % (PM) | - | - | - | - |
| Prop.of commercial vehicles - 16 hr. | - | - | - | - |
| WEST BOUND | | | | |
| A.A.D.T. | 2440 | 2390 | 2550 | 2520 |
| R 12 / 24 - % | 60.8 | 61.9 | 58.8 | 57.4 |
| R 16 / 24 - % | 84.6 | 85.5 | 82.3 | 82.5 |
| AM Peak Hour | 0800-0900 | 0700-0800 | 0900-1000 | 0900-1000 |
| One-way flow at AM peak hour | 120 | 150 | 90 | 80 |
| T - % (AM) | - | - | - | - |
| PM Peak Hour | 1800-1900 | 1800-1900 | 1700-1800 | 1800-1900 |
| One-way flow at PM peak hour | 170 | 160 | 170 | 170 |
| T - % (PM) | - | - | - | - |
| Prop.of commercial vehicles - 16 hr. | - | - | - | - |

3. OTHER INFORMATION AND COMMENT