

YEAR

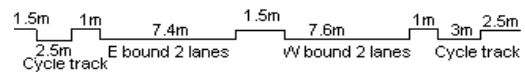
2012

LINK

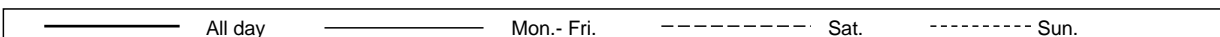
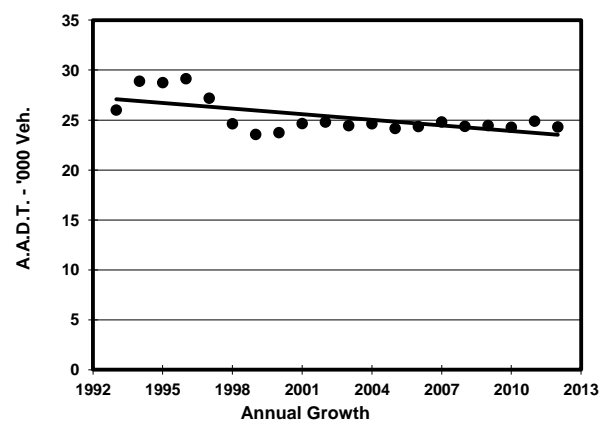
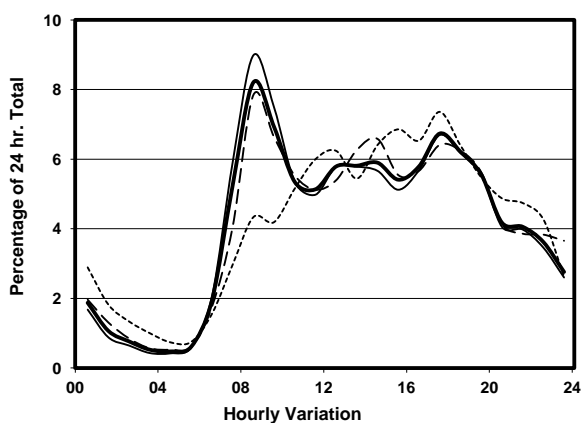
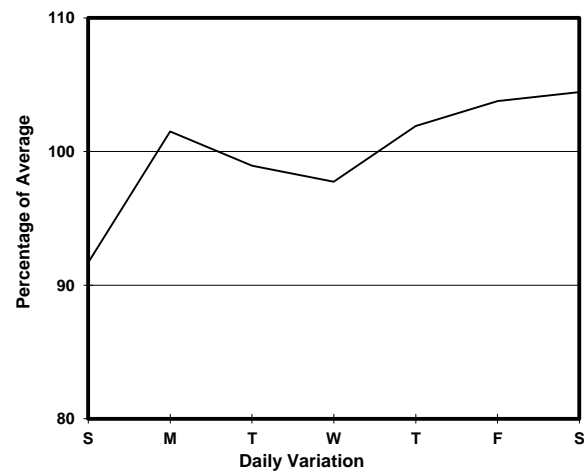
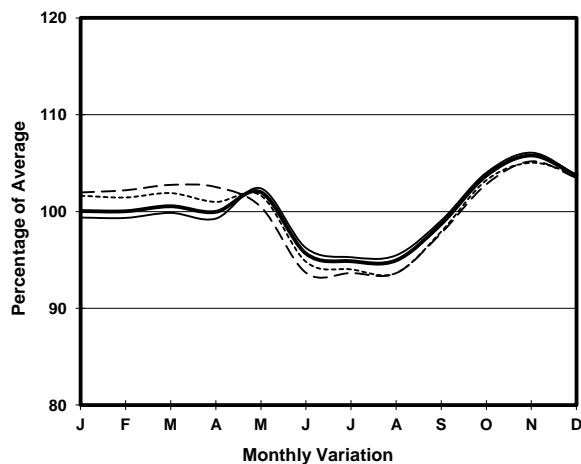
TING KOK RD (from NAM WAN RD to DAI KWAI ST)

CORE STATION
ROAD NETWORK
ROAD TYPE

5006
MAJOR
PRIMARY DISTRIBUTOR



1. TRAFFIC FLOW VARIATION AND GROWTH



2. TRAFFIC CHARACTERISTICS (BY DIRECTION)

Parameter	All - Day	Mon. - Fri.	Sat.	Sun.
EAST BOUND				
A.A.D.T.	11560	11640	12150	10940
R 12 / 24 - %	67.6	68.3	66.9	64.9
R 16 / 24 - %	89.3	90.2	87.5	86.2
AM Peak Hour	0800-0900	0800-0900	0800-0900	0800-0900
One-way flow at AM peak hour	830	940	660	450
T - % (AM)	-	-	-	-
PM Peak Hour	1700-1800	1800-1900	1700-1800	1700-1800
One-way flow at PM peak hour	760	780	810	830
T - % (PM)	-	-	-	-
Prop.of commercial vehicles - 16 hr.	-	-	-	-
WEST BOUND				
A.A.D.T.	12750	12960	13310	11510
R 12 / 24 - %	77	78.4	75.4	70.7
R 16 / 24 - %	90.6	91.2	90	88.3
AM Peak Hour	0800-0900	0800-0900	0800-0900	0900-1000
One-way flow at AM peak hour	1170	1270	1340	530
T - % (AM)	-	-	-	-
PM Peak Hour	1700-1800	1700-1800	1800-1900	1800-1900
One-way flow at PM peak hour	880	910	890	910
T - % (PM)	-	-	-	-
Prop.of commercial vehicles - 16 hr.	-	-	-	-

3. OTHER INFORMATION AND COMMENT