

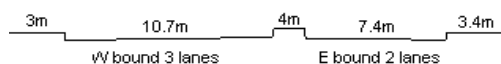
YEAR 2012

CORE STATION 5007

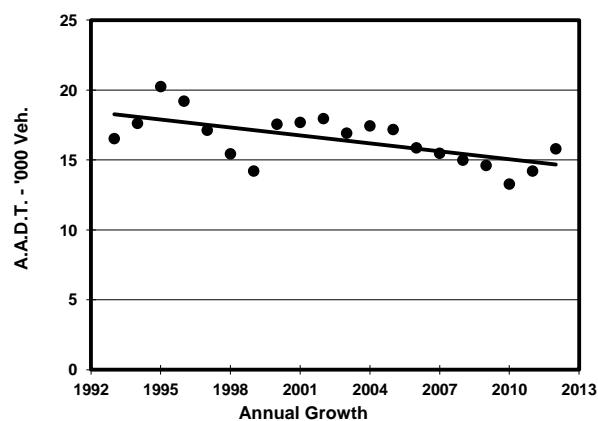
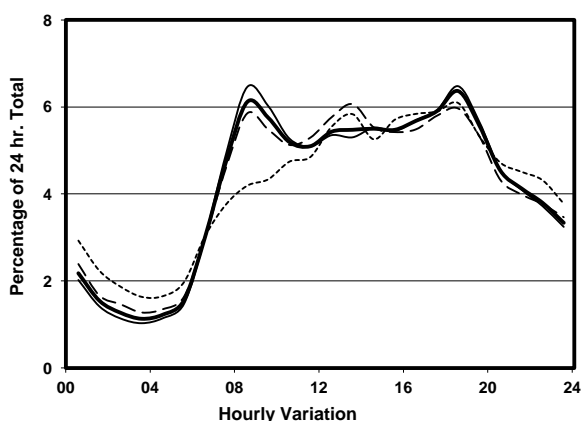
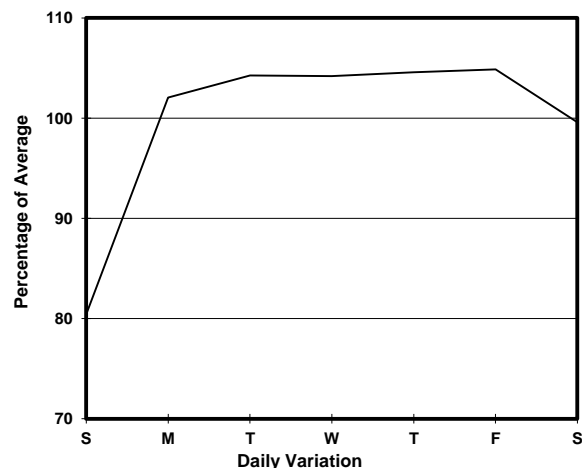
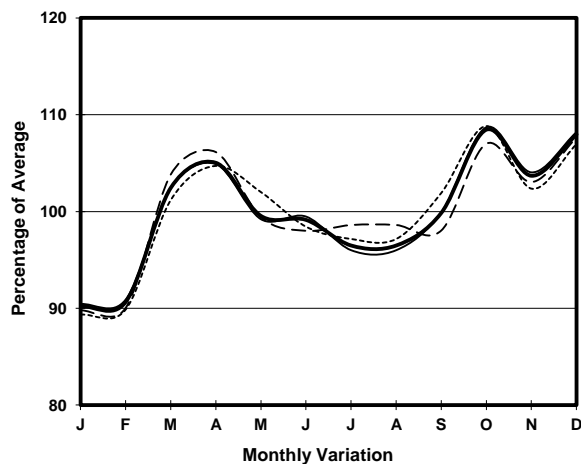
ROAD NETWORK MAJOR

ROAD TYPE DISTRICT DISTRIBUTOR

LINK KWAI FOO RD (from KWAI CHUNG RD to HING FONG RD)



1. TRAFFIC FLOW VARIATION AND GROWTH



2. TRAFFIC CHARACTERISTICS (BY DIRECTION)

Parameter	All - Day	Mon. - Fri.	Sat.	Sun.
EAST BOUND				
A.A.D.T.	3230	3410	3180	2640
R 12 / 24 - %	69.2	69.9	68.6	65.3
R 16 / 24 - %	88.2	88.6	87.4	86.4
AM Peak Hour	0800-0900	0800-0900	0900-1000	0900-1000
One-way flow at AM peak hour	200	230	190	140
T - % (AM)	-	-	-	-
PM Peak Hour	1800-1900	1800-1900	1800-1900	1800-1900
One-way flow at PM peak hour	230	250	200	160
T - % (PM)	-	-	-	-
Prop.of commercial vehicles - 16 hr.	-	-	-	-
WEST BOUND				
A.A.D.T.	12570	13190	12710	10240
R 12 / 24 - %	66.1	66.9	65.8	61.2
R 16 / 24 - %	83.8	84.7	82.9	79.5
AM Peak Hour	0800-0900	0800-0900	0800-0900	0800-0900
One-way flow at AM peak hour	760	850	750	420
T - % (AM)	-	-	-	-
PM Peak Hour	1800-1900	1800-1900	1800-1900	1800-1900
One-way flow at PM peak hour	780	830	750	620
T - % (PM)	-	-	-	-
Prop.of commercial vehicles - 16 hr.	-	-	-	-

3. OTHER INFORMATION AND COMMENT