

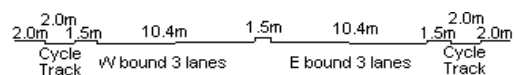
YEAR 2012

CORE STATION 5019

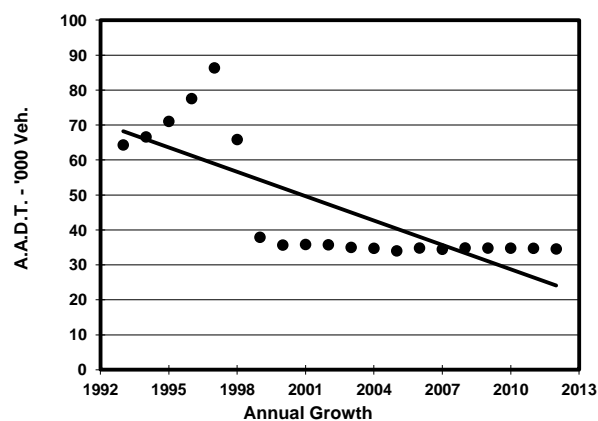
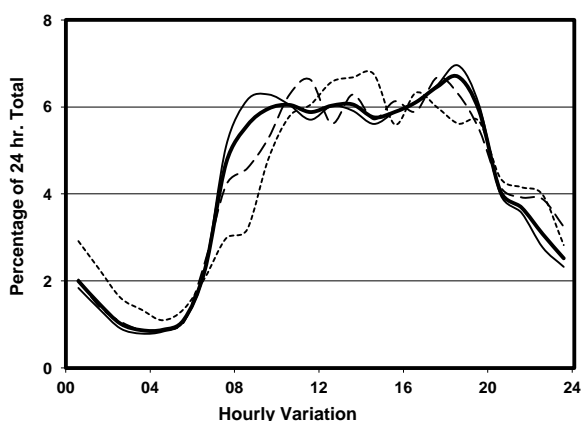
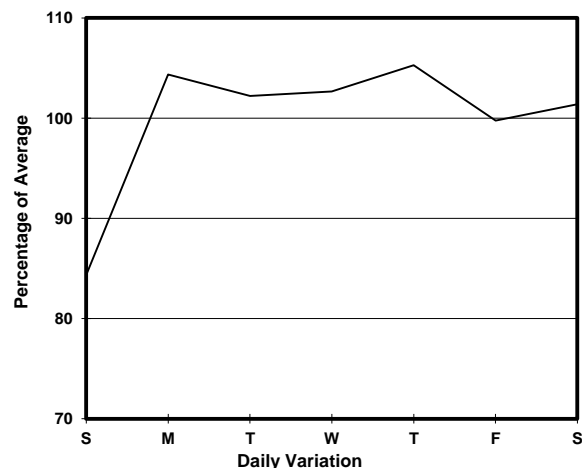
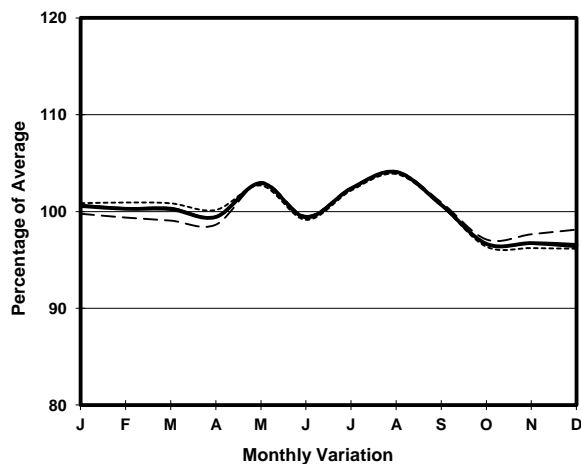
ROAD NETWORK MAJOR

ROAD TYPE RURAL TRUNK ROAD

LINK CASTLE PEAK RD - YUEN LONG (from YUEN LONG ON LOK RD to KAM TIN RD)



1. TRAFFIC FLOW VARIATION AND GROWTH



2. TRAFFIC CHARACTERISTICS (BY DIRECTION)

Parameter	All - Day	Mon. - Fri.	Sat.	Sun.
EAST BOUND				
A.A.D.T.	15270	15880	15350	13030
R 12 / 24 - %	70.9	71.9	69.6	66.3
R 16 / 24 - %	87.4	88.1	86.6	84.4
AM Peak Hour	0900-1000	0800-0900	0800-0900	0900-1000
One-way flow at AM peak hour	920	1030	810	630
T - % (AM)	-	-	-	-
PM Peak Hour	1600-1700	1600-1700	1700-1800	1600-1700
One-way flow at PM peak hour	980	1030	1020	830
T - % (PM)	-	-	-	-
Prop.of commercial vehicles - 16 hr.	-	-	-	-
WEST BOUND				
A.A.D.T.	19280	19970	19960	16300
R 12 / 24 - %	71.4	72.6	69.6	66.4
R 16 / 24 - %	88.3	89	87.4	84.7
AM Peak Hour	0900-1000	0900-1000	0900-1000	0900-1000
One-way flow at AM peak hour	1140	1230	1100	780
T - % (AM)	-	-	-	-
PM Peak Hour	1800-1900	1800-1900	1700-1800	1600-1700
One-way flow at PM peak hour	1400	1540	1330	1030
T - % (PM)	-	-	-	-
Prop.of commercial vehicles - 16 hr.	-	-	-	-

3. OTHER INFORMATION AND COMMENT