

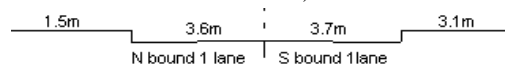
YEAR 2012

CORE STATION 5102

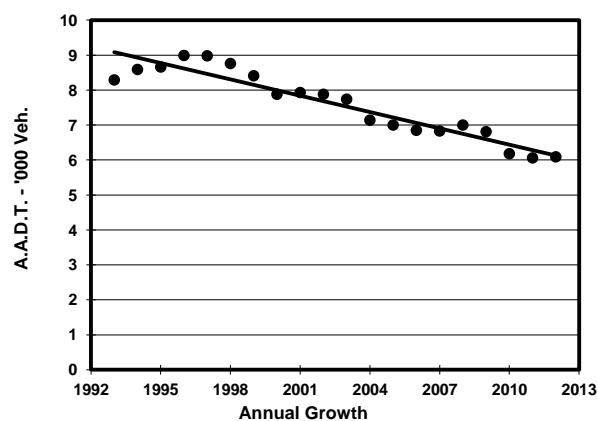
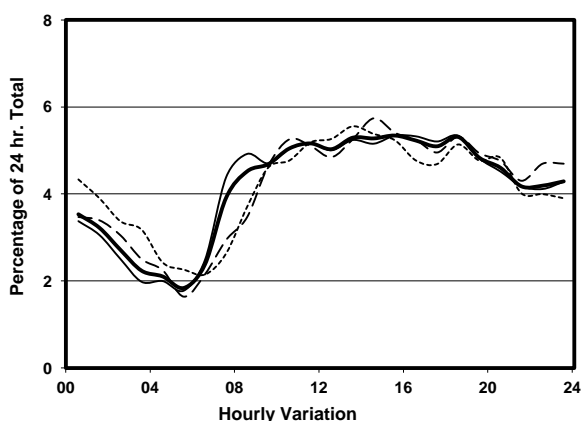
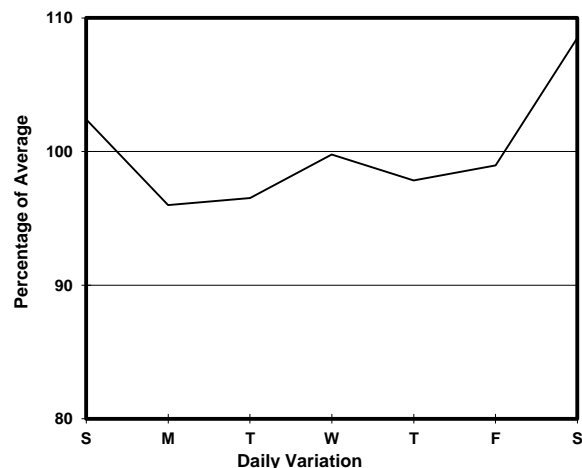
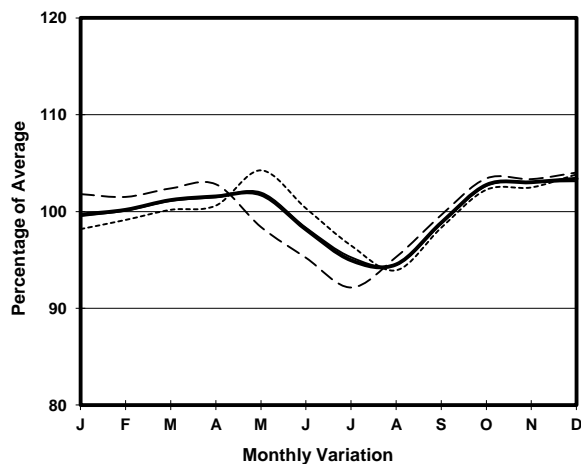
ROAD NETWORK MINOR

ROAD TYPE LOCAL DISTRIBUTOR

LINK TSENG CHOI ST (from CASTLE PEAK RD NORTHERN JUNCTION to CASTLE PEAK RD SOUTHERN JUNCTION)



## 1. TRAFFIC FLOW VARIATION AND GROWTH



## 2. TRAFFIC CHARACTERISTICS (BY DIRECTION)

Parameter	All - Day	Mon. - Fri.	Sat.	Sun.
<b>SOUTH BOUND</b>				
A.A.D.T.	3810	3740	4080	3900
R 12 / 24 - %	59.5	60.5	58.1	56.6
R 16 / 24 - %	77.8	78.8	76.7	74.2
AM Peak Hour	0900-1000	0800-0900	0900-1000	0900-1000
One-way flow at AM peak hour	180	180	180	180
T - % (AM)	-	-	-	-
PM Peak Hour	1800-1900	1800-1900	1600-1700	1800-1900
One-way flow at PM peak hour	210	210	220	200
T - % (PM)	-	-	-	-
Prop.of commercial vehicles - 16 hr.	-	-	-	-
<b>NORTH BOUND</b>				
A.A.D.T.	2280	2210	2510	2340
R 12 / 24 - %	60.6	61.7	58.4	57.5
R 16 / 24 - %	77.6	78.2	77.2	75.1
AM Peak Hour	0900-1000	0800-0900	0900-1000	0900-1000
One-way flow at AM peak hour	110	110	130	110
T - % (AM)	-	-	-	-
PM Peak Hour	1800-1900	1600-1700	1800-1900	1800-1900
One-way flow at PM peak hour	120	120	150	120
T - % (PM)	-	-	-	-
Prop.of commercial vehicles - 16 hr.	-	-	-	-

## 3. OTHER INFORMATION AND COMMENT