

YEAR

2012

LINK POK FU LAM RD (from POKFIELD RD to MOUNT DAVIS RD)

COVERAGE (B) STATION

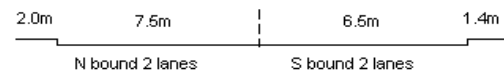
2201

ROAD NETWORK

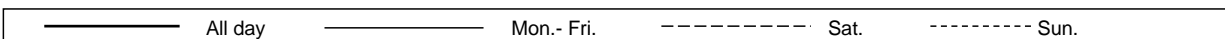
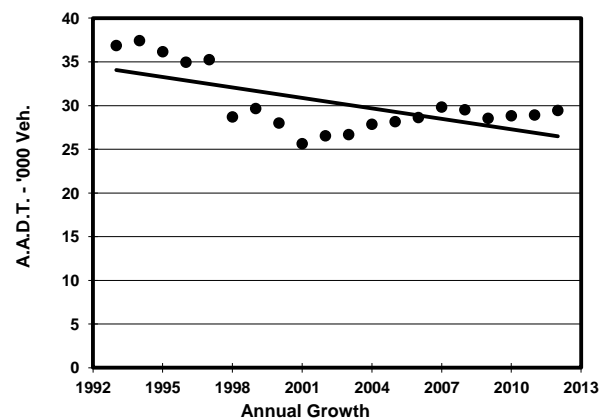
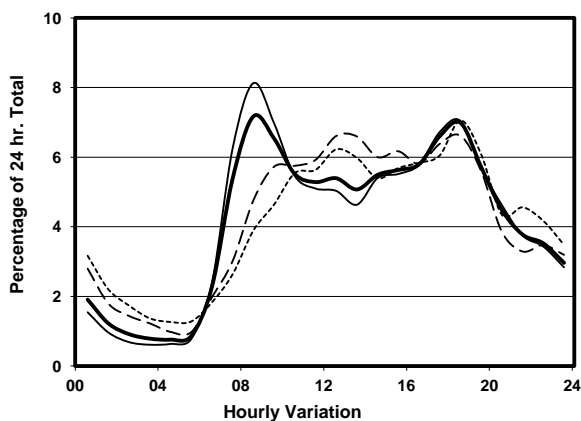
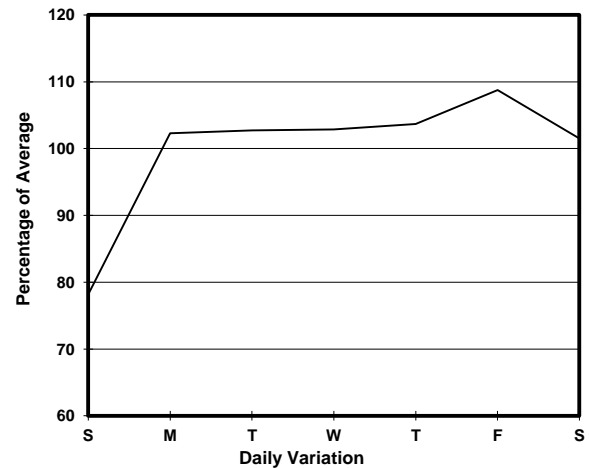
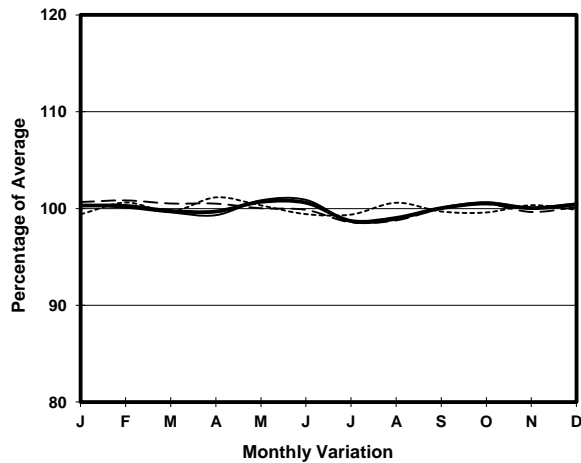
MAJOR

ROAD TYPE

PRIMARY DISTRIBUTOR



1. TRAFFIC FLOW VARIATION AND GROWTH



2. TRAFFIC CHARACTERISTICS (BY DIRECTION)

| Parameter | All - Day | Mon. - Fri. | Sat. | Sun. |
|--------------------------------------|-----------|-------------|-----------|-----------|
| SOUTH BOUND | | | | |
| A.A.D.T. | 8810 | 9040 | 9550 | 7620 |
| R 12 / 24 - % | 64.6 | 65.5 | 64.6 | 59.3 |
| R 16 / 24 - % | 85.4 | 86.7 | 82.8 | 81.3 |
| AM Peak Hour | 0900-1000 | 0900-1000 | 0900-1000 | 0900-1000 |
| One-way flow at AM peak hour | 510 | 560 | 510 | 320 |
| T - % (AM) | - | 9.4 | - | - |
| PM Peak Hour | 1800-1900 | 1800-1900 | 1600-1700 | 1800-1900 |
| One-way flow at PM peak hour | 550 | 580 | 630 | 520 |
| T - % (PM) | - | 6.9 | - | - |
| Prop.of commercial vehicles - 16 hr. | - | 9.4 | - | - |
| NORTH BOUND | | | | |
| A.A.D.T. | 20630 | 21960 | 20680 | 15650 |
| R 12 / 24 - % | 73.5 | 74.8 | 71.6 | 67.1 |
| R 16 / 24 - % | 89.6 | 90.7 | 86.9 | 84.9 |
| AM Peak Hour | 0800-0900 | 0800-0900 | 0900-1000 | 0900-1000 |
| One-way flow at AM peak hour | 1620 | 1960 | 1230 | 760 |
| T - % (AM) | - | 6.3 | - | - |
| PM Peak Hour | 1800-1900 | 1800-1900 | 1800-1900 | 1800-1900 |
| One-way flow at PM peak hour | 1500 | 1610 | 1460 | 1130 |
| T - % (PM) | - | 7 | - | - |
| Prop.of commercial vehicles - 16 hr. | - | 7.8 | - | - |

3. OTHER INFORMATION AND COMMENT

Coverage (B) Station 2201
Year 2012

4. Vehicle classification and occupancy - Monday to Friday

| Time | | Class of vehicle | | | | | | | | | |
|------------------------|-----|------------------|----------------|------|---------------|------|------------|-------|----------------|---------|------|
| | | Motor Cycle | Private Car | Taxi | Private LB | PLB | Goods veh. | | Non Fr. Bus | Fr. Bus | |
| | | | | | | | Light | M & H | | SD | DD |
| 0700-0800 | Pro | 1.7 | 33.4 | 33.4 | 1.7 | 12.8 | 3.3 | 0.9 | 6.5 | 0.1 | 6.3 |
| | Ocp | 1.1 | 1.6 | 2.1 | 5.9 | 11.9 | 1.5 | 1.5 | 15.0 | 11.0 | 58.6 |
| 0800-0900 Peak hour | Pro | 2.9 | 45.8 | 30.9 | 1.8 | 7.0 | 4.7 | 1.0 | 1.9 | 0.1 | 4.0 |
| | Ocp | 1.0 | 1.5 | 2.2 | 5.5 | 13.1 | 1.4 | 1.3 | 10.9 | 23.0 | 62.7 |
| 0900-1000 | Pro | 2.6 | 50.2 | 21.3 | 1.9 | 9.2 | 7.5 | 0.9 | 1.2 | 0.0 | 5.4 |
| | Ocp | 1.0 | 1.4 | 2.0 | 1.7 | 12.6 | 1.4 | 1.2 | 3.1 | 0.0 | 36.8 |
| 1000-1100 | Pro | 1.8 | 34.2 | 34.9 | 0.8 | 7.8 | 12.5 | 1.4 | 1.2 | 0.1 | 5.5 |
| | Ocp | 1.0 | 1.3 | 1.8 | 2.0 | 8.6 | 1.3 | 1.3 | 2.3 | 1.0 | 21.7 |
| 1100-1200 | Pro | 2.0 | 36.3 | 28.3 | 3.0 | 8.2 | 12.7 | 0.2 | 3.2 | 0.0 | 6.1 |
| | Ocp | 1.0 | 1.4 | 2.0 | 2.0 | 9.9 | 1.5 | 1.0 | 1.6 | 0.0 | 24.2 |
| 1200-1300 | Pro | 1.7 | 31.2 | 32.0 | 4.5 | 8.7 | 12.6 | 1.9 | 2.1 | 0.0 | 5.4 |
| | Ocp | 1.1 | 1.5 | 2.1 | 2.3 | 9.9 | 1.5 | 1.4 | 5.8 | 0.0 | 22.9 |
| 1300-1400 | Pro | 2.0 | 28.3 | 35.7 | 1.2 | 9.2 | 15.1 | 0.5 | 1.7 | 0.0 | 6.3 |
| | Ocp | 1.0 | 1.6 | 2.1 | 2.0 | 9.5 | 1.5 | 1.0 | 7.4 | 0.0 | 20.1 |
| 1400-1500 | Pro | 1.4 | 28.8 | 34.5 | 1.8 | 9.4 | 14.6 | 1.6 | 1.8 | 0.0 | 6.1 |
| | Ocp | 1.0 | 1.4 | 2.0 | 2.4 | 8.1 | 1.6 | 1.3 | 6.3 | 0.0 | 21.2 |
| 1500-1600 | Pro | 0.9 | 30.7 | 35.5 | 2.9 | 8.6 | 11.2 | 0.7 | 3.7 | 0.0 | 5.9 |
| | Ocp | 1.0 | 1.4 | 2.2 | 4.3 | 9.8 | 1.6 | 1.7 | 14.8 | 0.0 | 23.5 |
| 1600-1700 | Pro | 1.4 | 37.7 | 28.1 | 2.0 | 7.6 | 13.8 | 0.0 | 3.8 | 0.1 | 5.4 |
| | Ocp | 1.1 | 1.5 | 2.1 | 4.6 | 11.7 | 1.8 | 0.0 | 5.5 | 1.0 | 35.5 |
| 1700-1800 | Pro | 3.7 | 34.2 | 29.6 | 2.1 | 10.2 | 11.3 | 0.4 | 2.1 | 0.0 | 6.3 |
| | Ocp | 1.0 | 1.5 | 2.2 | 2.7 | 13.3 | 1.5 | 1.0 | 12.1 | 0.0 | 48.2 |
| 1800-1900 | Pro | 0.7 | 38.3 | 40.1 | 0.3 | 8.6 | 4.9 | 0.1 | 2.7 | 0.0 | 4.2 |
| | Ocp | 1.0 | 1.4 | 1.8 | 1.0 | 13.4 | 1.5 | 1.0 | 22.4 | 0.0 | 61.3 |
| 1900-2000 | Pro | 1.2 | 44.0 | 36.2 | 0.2 | 9.5 | 1.9 | 0.2 | 1.2 | 0.0 | 5.7 |
| | Ocp | 1.0 | 1.6 | 1.9 | 1.0 | 11.7 | 2.2 | 1.0 | 11.2 | 0.0 | 39.0 |
| 2000-2100 | Pro | 2.2 | 34.5 | 44.2 | 0.2 | 10.5 | 1.7 | 0.2 | 0.0 | 0.0 | 6.4 |
| | Ocp | 1.0 | 1.6 | 1.7 | 2.0 | 10.0 | 2.0 | 1.0 | 0.0 | 0.0 | 25.4 |
| 2100-2200 | Pro | 1.5 | 22.7 | 54.8 | 0.0 | 12.5 | 1.1 | 0.0 | 0.0 | 0.1 | 7.3 |
| | Ocp | 1.0 | 1.4 | 1.8 | 0.0 | 8.2 | 1.0 | 0.0 | 0.0 | 19.0 | 26.7 |
| 2200-2300 | Pro | 1.7 | 21.3 | 56.1 | 0.3 | 12.9 | 1.0 | 0.0 | 0.0 | 0.0 | 6.5 |
| | Ocp | 1.0 | 1.5 | 1.6 | 1.0 | 9.1 | 2.0 | 0.0 | 0.0 | 0.0 | 25.8 |
| 16 hours | Pro | 1.9 | 36.0 | 34.6 | 1.6 | 9.2 | 8.2 | 0.7 | 2.2 | 0.1 | 5.6 |
| | Ocp | 1.0 | 1.5 | 2.0 | 3.2 | 10.9 | 1.5 | 1.3 | 10.7 | 13.0 | 35.6 |

Legend

Pro. Proportion of vehicles in % (Sum may not add up to 100% due to figure rounding)
Ocp. Average occupancy of vehicles
M&H Medium and Heavy