

YEAR 2012

COVERAGE (B) STATION 2203

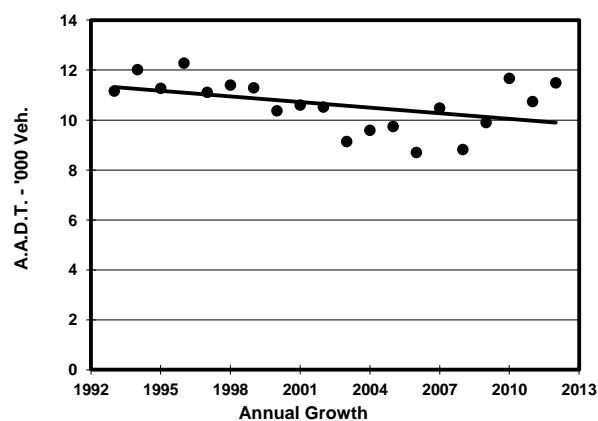
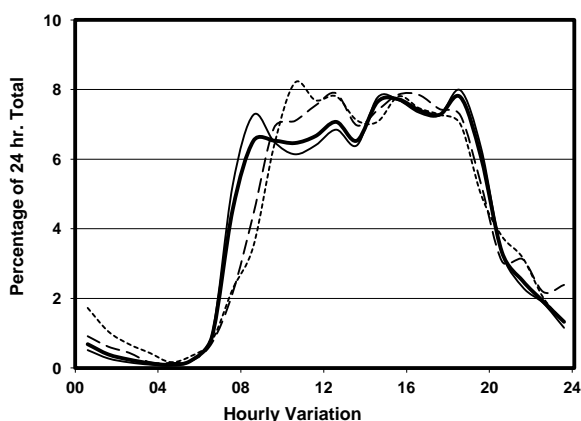
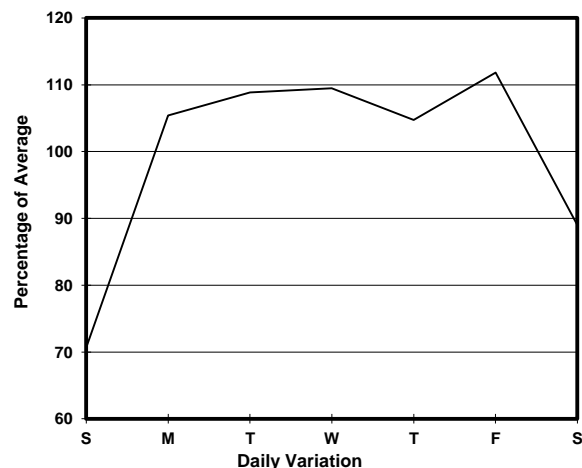
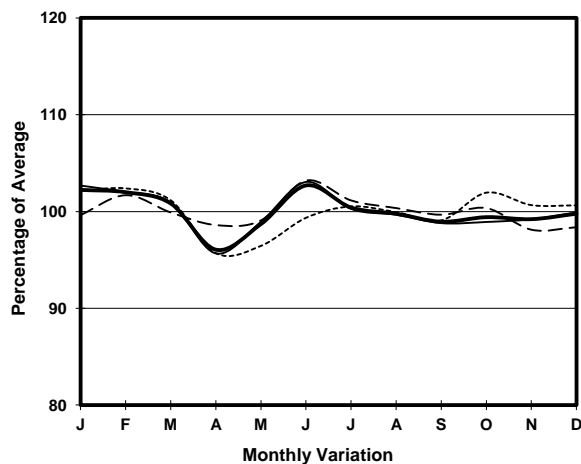
ROAD NETWORK MAJOR

ROAD TYPE DISTRICT DISTRIBUTOR

LINK STUBBS RD (from WAN CHAI GAP to WONG NAI CHUNG GAP RD)



## 1. TRAFFIC FLOW VARIATION AND GROWTH



## 2. TRAFFIC CHARACTERISTICS (BY DIRECTION)

Parameter	All - Day	Mon. - Fri.	Sat.	Sun.
<b>SOUTH BOUND</b>				
A.A.D.T.	6310	6920	5730	4540
R 12 / 24 - %	81.2	81.5	81	79
R 16 / 24 - %	95.9	96.6	94.5	93
AM Peak Hour	0800-0900	0800-0900	0900-1000	0900-1000
One-way flow at AM peak hour	380	460	370	270
T - % (AM)	-	13.9	-	-
PM Peak Hour	1800-1900	1800-1900	1600-1700	1600-1700
One-way flow at PM peak hour	500	570	480	340
T - % (PM)	-	20	-	-
Prop.of commercial vehicles - 16 hr.	-	13.3	-	-
<b>NORTH BOUND</b>				
A.A.D.T.	5180	5700	4670	3690
R 12 / 24 - %	83.4	84.4	80.5	80.3
R 16 / 24 - %	96.1	96.6	94.3	94.1
AM Peak Hour	0900-1000	0800-0900	0900-1000	0900-1000
One-way flow at AM peak hour	390	460	350	260
T - % (AM)	-	9.8	-	-
PM Peak Hour	1800-1900	1800-1900	1800-1900	1700-1800
One-way flow at PM peak hour	400	440	380	280
T - % (PM)	-	24	-	-
Prop.of commercial vehicles - 16 hr.	-	12.3	-	-

## 3. OTHER INFORMATION AND COMMENT

**4. Vehicle classification and occupancy - Monday to Friday**

Time		Class of vehicle									
		Motor Cycle	Private Car	Taxi	Private LB	PLB	Goods veh.		Non Fr. Bus	Fr. Bus	
							Light	M & H		SD	DD
0700-0800	Pro	2.9	46.8	28.6	2.9	3.8	5.7	0.0	7.6	0.0	1.7
	Ocp	1.0	2.2	2.0	5.7	3.0	2.3	0.0	7.8	0.0	35.6
0800-0900	Pro	0.8	64.3	11.7	1.6	2.0	8.1	1.6	8.9	0.0	0.9
	Ocp	1.0	1.6	2.0	2.8	3.6	2.5	1.5	14.7	0.0	34.7
0900-1000	Pro	0.4	62.0	18.9	1.3	0.4	11.6	2.2	2.2	0.0	1.0
	Ocp	1.0	1.6	1.7	3.3	2.0	1.9	1.4	9.0	0.0	23.6
1000-1100	Pro	2.2	47.1	19.2	0.0	0.0	21.9	2.2	6.0	0.0	1.4
	Ocp	1.3	1.5	1.7	0.0	0.0	1.8	1.5	10.5	0.0	18.9
1100-1200	Pro	2.6	54.8	14.3	1.5	1.5	17.4	1.0	5.6	0.0	1.2
	Ocp	1.0	1.6	1.8	5.3	4.3	2.2	1.5	20.1	0.0	16.0
1200-1300	Pro	3.1	49.7	19.2	1.8	0.9	14.3	3.1	6.7	0.0	1.1
	Ocp	1.0	1.6	1.7	6.5	5.5	2.3	1.4	13.6	0.0	21.5
1300-1400	Pro	0.5	50.5	19.3	0.5	1.0	15.4	3.4	8.2	0.0	1.3
	Ocp	1.0	1.4	1.8	4.0	8.0	2.3	1.4	27.6	0.0	24.9
1400-1500	Pro	2.1	39.4	18.5	0.8	0.4	15.2	1.6	20.9	0.0	1.1
	Ocp	1.2	1.5	2.0	1.0	4.0	1.9	1.8	9.5	0.0	26.7
1500-1600	Pro	0.9	57.0	17.1	1.3	0.9	11.6	3.0	7.3	0.0	1.0
	Ocp	1.0	1.6	2.0	5.0	7.0	2.1	1.6	14.1	0.0	28.1
1600-1700	Pro	1.7	54.4	17.9	1.7	0.8	15.8	1.7	5.0	0.0	1.1
	Ocp	1.0	1.6	2.3	6.3	9.0	2.1	1.3	15.7	0.0	25.7
1700-1800	Pro	3.1	59.1	19.4	1.0	1.0	6.6	0.5	8.2	0.0	1.1
	Ocp	1.0	1.9	2.5	1.5	5.0	1.9	2.0	13.3	0.0	45.8
1800-1900 Peak hour	Pro	2.9	49.7	20.8	0.4	1.8	2.6	0.4	20.8	0.0	0.6
	Ocp	1.1	1.7	2.1	4.0	4.8	1.6	3.0	17.6	0.0	50.7
1900-2000	Pro	2.0	64.5	18.4	0.0	0.0	0.5	0.0	13.3	0.0	1.2
	Ocp	1.0	1.6	2.1	0.0	0.0	2.0	0.0	18.7	0.0	29.6
2000-2100	Pro	1.7	55.4	19.0	0.0	0.9	0.9	0.0	19.9	0.0	2.2
	Ocp	1.0	1.5	1.7	0.0	1.0	1.0	0.0	11.3	0.0	31.3
2100-2200	Pro	1.5	50.8	26.2	0.0	3.1	0.0	0.0	15.4	0.0	3.1
	Ocp	1.0	1.7	1.9	0.0	2.5	0.0	0.0	13.0	0.0	32.0
2200-2300	Pro	1.9	67.3	23.1	0.0	0.0	1.9	1.9	0.0	0.0	3.8
	Ocp	1.0	1.5	1.7	0.0	0.0	2.0	1.0	0.0	0.0	15.9
16 hours	Pro	1.9	54.2	18.6	1.0	1.1	10.5	1.6	10.0	0.0	1.2
	Ocp	1.1	1.6	1.9	4.4	4.6	2.1	1.5	14.8	0.0	28.3

**Legend**

- Pro.** Proportion of vehicles in % (Sum may not add up to 100% due to figure rounding)  
**Ocp.** Average occupancy of vehicles  
**M&H** Medium and Heavy