

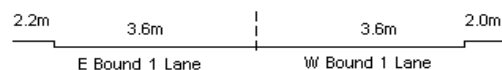
YEAR 2012

COVERAGE (B) STATION 2204

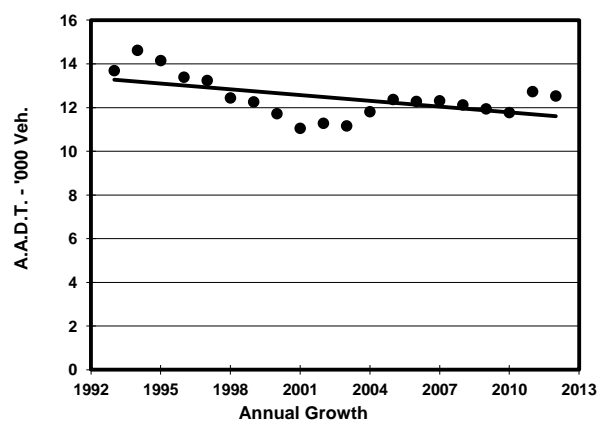
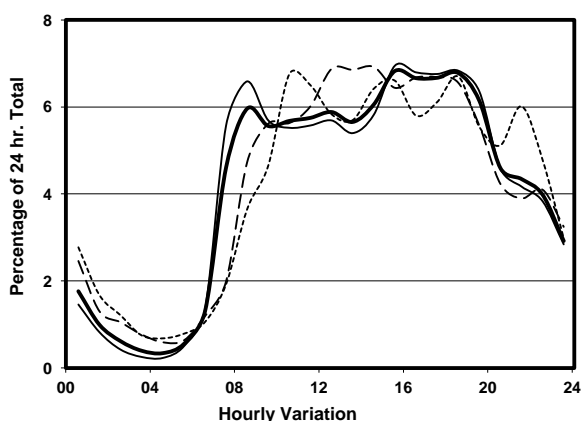
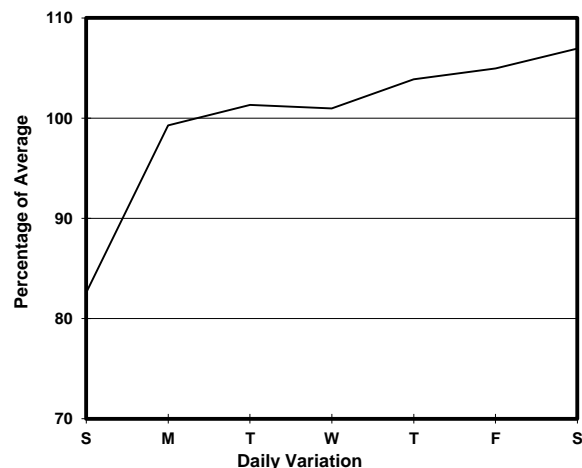
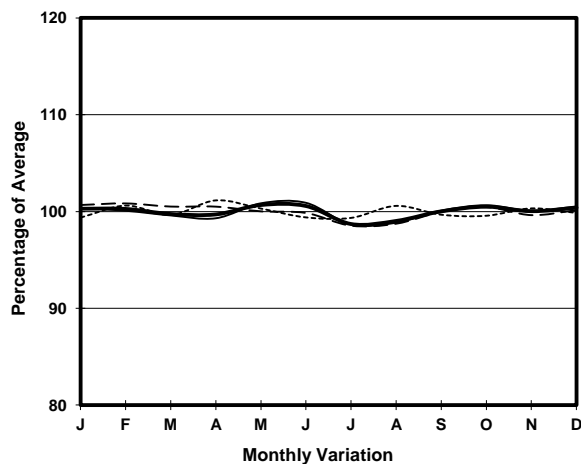
ROAD NETWORK MAJOR

ROAD TYPE DISTRICT DISTRIBUTOR

LINK YEE KING RD & LAI TAK TSUEN RD (from CLOUD VIEW RD to TAI HANG RD)



1. TRAFFIC FLOW VARIATION AND GROWTH



2. TRAFFIC CHARACTERISTICS (BY DIRECTION)

Parameter	All - Day	Mon. - Fri.	Sat.	Sun.
EAST BOUND				
A.A.D.T.	7230	7320	7930	6540
R 12 / 24 - %	70	71	69.9	64.3
R 16 / 24 - %	90.5	91.6	87.8	87.8
AM Peak Hour	0800-0900	0800-0900	0900-1000	0900-1000
One-way flow at AM peak hour	390	430	420	300
T - % (AM)	-	11.8	-	-
PM Peak Hour	1600-1700	1600-1700	1700-1800	1700-1800
One-way flow at PM peak hour	510	530	550	390
T - % (PM)	-	13.9	-	-
Prop.of commercial vehicles - 16 hr.	-	8.2	-	-
WEST BOUND				
A.A.D.T.	5300	5600	5590	3900
R 12 / 24 - %	75	76.1	72.5	70.5
R 16 / 24 - %	92	92.8	90.1	88.5
AM Peak Hour	0800-0900	0800-0900	0900-1000	0900-1000
One-way flow at AM peak hour	360	430	340	180
T - % (AM)	-	16.6	-	-
PM Peak Hour	1800-1900	1700-1800	1600-1700	1800-1900
One-way flow at PM peak hour	350	360	380	320
T - % (PM)	-	6.3	-	-
Prop.of commercial vehicles - 16 hr.	-	7.9	-	-

3. OTHER INFORMATION AND COMMENT

4. Vehicle classification and occupancy - Monday to Friday

Time		Class of vehicle									
		Motor	Private	Taxi	Private	PLB	Goods veh.		Non	Fr. Bus	
		Cycle	Car		LB		Light	M & H	Fr. Bus	SD	DD
0700-0800	Pro	0.9	28.1	28.9	7.9	7.9	0.9	0.0	18.4	3.5	3.5
	Ocp	1.0	1.5	2.0	5.9	11.7	1.0	0.0	17.3	20.5	14.3
0800-0900	Pro	0.0	62.0	13.3	4.3	2.8	3.3	0.9	9.9	1.9	1.5
	Ocp	0.0	1.5	2.0	8.4	13.7	2.0	1.5	11.6	20.1	9.2
0900-1000	Pro	2.7	61.5	18.4	0.0	4.3	8.1	0.5	1.1	1.6	1.8
	Ocp	1.2	1.4	2.0	0.0	11.1	1.6	2.0	1.0	20.2	6.3
1000-1100	Pro	0.6	50.8	22.6	1.8	5.5	9.8	0.0	5.5	1.8	1.5
	Ocp	1.0	1.4	1.9	1.7	8.7	1.3	0.0	4.6	17.9	5.0
1100-1200	Pro	1.8	49.7	25.7	2.9	2.9	11.7	0.6	1.8	1.6	1.3
	Ocp	1.0	1.6	1.6	3.8	12.2	1.8	1.0	7.0	16.6	7.0
1200-1300	Pro	3.2	46.8	28.9	1.6	5.8	7.9	0.0	3.7	1.2	0.9
	Ocp	1.0	1.8	1.9	5.7	8.7	1.7	0.0	18.4	18.4	7.3
1300-1400	Pro	1.7	31.7	39.5	2.2	5.0	11.7	1.1	3.9	1.7	1.5
	Ocp	1.0	1.4	1.6	3.5	9.8	1.7	1.0	10.9	16.9	5.7
1400-1500	Pro	2.4	49.5	26.6	1.2	4.8	6.6	0.0	5.4	1.8	1.5
	Ocp	1.0	1.6	1.9	4.0	11.9	2.0	0.0	2.7	11.8	3.9
1500-1600 Peak hour	Pro	1.3	51.7	25.4	2.7	1.8	6.7	0.4	7.1	1.1	1.8
	Ocp	1.0	1.6	2.1	3.8	10.0	1.4	2.0	13.3	22.6	6.1
1600-1700	Pro	1.5	48.5	22.7	2.1	3.6	8.3	0.0	9.8	1.5	1.9
	Ocp	1.0	1.5	2.0	2.3	13.1	1.9	0.0	5.8	20.9	9.1
1700-1800	Pro	3.4	50.2	26.1	1.0	3.4	9.8	0.5	2.5	1.5	1.6
	Ocp	1.0	1.5	1.9	4.5	12.9	2.4	2.0	5.2	23.2	11.6
1800-1900	Pro	1.4	52.5	32.7	0.5	3.9	3.4	0.5	2.4	1.6	1.2
	Ocp	1.0	1.7	2.0	5.0	10.4	1.1	2.0	5.6	20.3	13.5
1900-2000	Pro	0.9	56.3	34.1	0.0	2.7	1.3	0.0	2.2	1.6	0.9
	Ocp	1.0	1.6	2.1	0.0	12.7	2.3	0.0	6.4	19.6	5.5
2000-2100	Pro	1.8	40.1	44.9	0.0	5.5	3.0	0.0	1.2	2.1	1.4
	Ocp	1.3	1.5	1.9	0.0	8.4	1.2	0.0	7.5	8.2	5.0
2100-2200	Pro	1.9	45.9	42.7	0.0	5.7	0.0	0.0	0.6	2.1	1.1
	Ocp	1.0	1.5	2.0	0.0	6.1	0.0	0.0	19.0	9.8	2.1
2200-2300	Pro	0.8	51.4	40.8	0.0	4.9	0.0	0.0	0.0	2.0	0.0
	Ocp	1.0	1.7	2.0	0.0	8.5	0.0	0.0	0.0	8.4	0.0
16 hours	Pro	1.7	49.4	29.0	1.7	4.2	6.0	0.3	4.6	1.7	1.5
	Ocp	1.0	1.5	1.9	5.0	10.4	1.7	1.6	10.2	17.3	7.9

Legend

Pro. Proportion of vehicles in % (Sum may not add up to 100% due to figure rounding)
Ocp. Average occupancy of vehicles
M&H Medium and Heavy