

YEAR

2012

LINK

MAGAZINE GAP RD (from GARDEN RD to PEAK RD)

COVERAGE (B) STATION

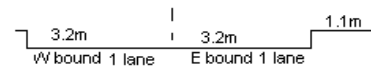
2205

ROAD NETWORK

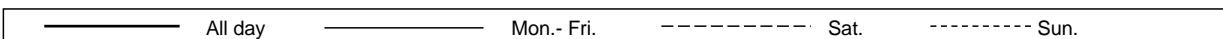
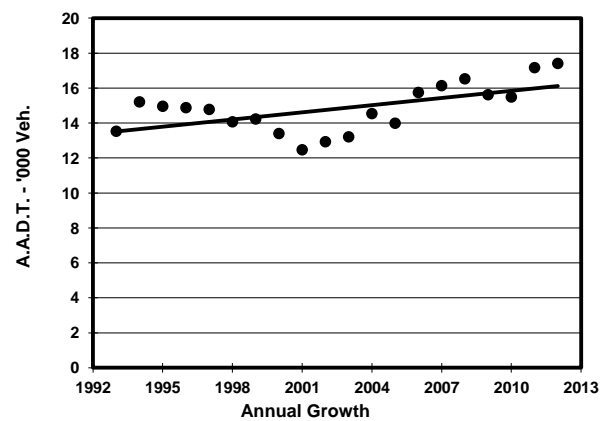
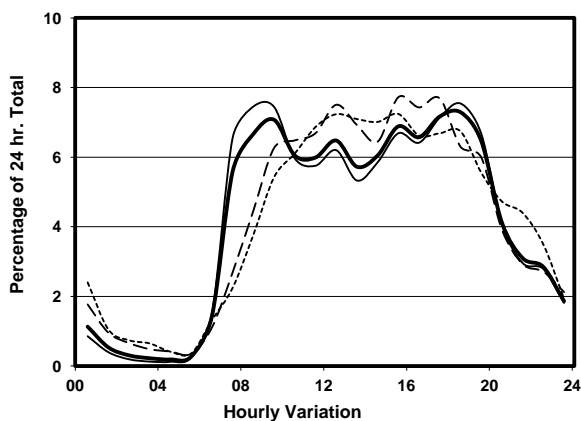
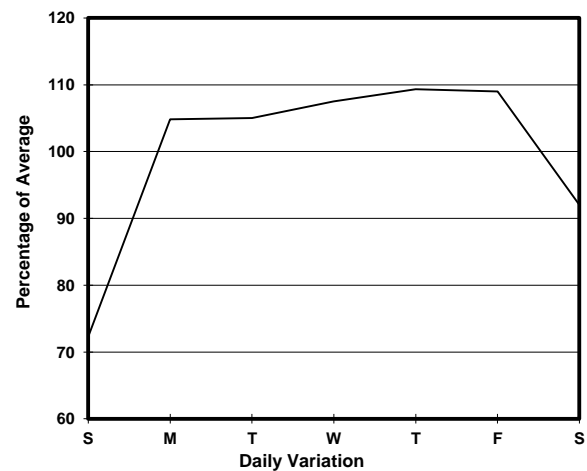
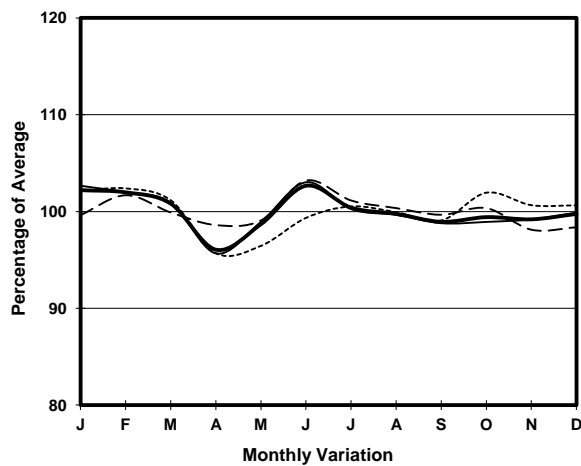
MAJOR

ROAD TYPE

DISTRICT DISTRIBUTOR



## 1. TRAFFIC FLOW VARIATION AND GROWTH



## 2. TRAFFIC CHARACTERISTICS (BY DIRECTION)

Parameter	All - Day	Mon. - Fri.	Sat.	Sun.
<b>EAST BOUND</b>				
A.A.D.T.	9070	9800	8530	6950
R 12 / 24 - %	75.6	76	76	72.6
R 16 / 24 - %	93.6	94.3	91.7	90.6
AM Peak Hour	0900-1000	0800-0900	0900-1000	0900-1000
One-way flow at AM peak hour	590	690	510	370
T - % (AM)	-	4.7	-	-
PM Peak Hour	1800-1900	1800-1900	1700-1800	1600-1700
One-way flow at PM peak hour	690	790	660	480
T - % (PM)	-	1.2	-	-
Prop.of commercial vehicles - 16 hr.	-	1.4	-	-

<b>WEST BOUND</b>				
A.A.D.T.	8340	9140	7740	5790
R 12 / 24 - %	79.6	80.8	77.3	73.4
R 16 / 24 - %	94.6	95.3	92.7	91.8
AM Peak Hour	0900-1000	0900-1000	0900-1000	0900-1000
One-way flow at AM peak hour	640	740	510	320
T - % (AM)	-	3.3	-	-
PM Peak Hour	1700-1800	1700-1800	1700-1800	1800-1900
One-way flow at PM peak hour	600	660	590	420
T - % (PM)	-	3.9	-	-
Prop.of commercial vehicles - 16 hr.	-	2.7	-	-

## 3. OTHER INFORMATION AND COMMENT

**4. Vehicle classification and occupancy - Monday to Friday**

Time		Class of vehicle									
		Motor Cycle	Private Car	Taxi	Private LB	PLB	Goods veh.		Non Fr. Bus	Fr. Bus	
							Light	M & H		SD	DD
0700-0800	Pro	1.5	56.7	31.8	2.0	1.5	2.0	0.0	4.5	0.0	0.0
	Ocp	1.0	1.5	2.0	9.0	15.0	2.8	0.0	6.4	0.0	0.0
0800-0900	Pro	0.9	67.1	21.5	0.4	3.5	3.1	0.0	3.5	0.0	0.0
	Ocp	1.0	1.5	2.3	1.0	15.4	2.0	0.0	8.5	0.0	0.0
0900-1000	Pro	1.2	66.1	20.1	1.6	2.4	6.3	0.4	2.0	0.0	0.0
	Ocp	1.0	1.6	2.7	2.5	10.0	2.3	1.0	6.2	0.0	0.0
1000-1100	Pro	0.7	69.0	19.9	0.0	1.7	8.4	0.0	0.3	0.0	0.0
	Ocp	1.0	1.5	2.0	0.0	11.4	2.2	0.0	2.0	0.0	0.0
1100-1200	Pro	1.7	64.9	22.9	0.9	0.9	6.9	0.0	1.7	0.0	0.0
	Ocp	1.0	1.5	2.1	2.0	15.0	1.3	0.0	6.3	0.0	0.0
1200-1300	Pro	1.2	62.7	23.5	1.9	0.8	8.8	0.0	1.2	0.0	0.0
	Ocp	1.0	1.4	2.1	7.0	16.0	1.7	0.0	7.7	0.0	0.0
1300-1400	Pro	0.9	58.9	28.6	0.9	0.4	8.0	0.9	1.3	0.0	0.0
	Ocp	1.5	1.5	2.1	2.5	17.0	1.8	1.5	5.7	0.0	0.0
1400-1500	Pro	1.6	61.8	22.8	1.2	2.4	8.1	0.0	2.0	0.0	0.0
	Ocp	1.0	1.5	2.0	2.3	9.8	1.5	0.0	4.6	0.0	0.0
1500-1600	Pro	1.4	65.5	20.1	0.7	1.4	6.5	0.0	4.3	0.0	0.0
	Ocp	1.3	1.6	2.3	12.0	7.8	1.8	0.0	16.9	0.0	0.0
1600-1700	Pro	1.0	58.8	23.1	1.0	1.5	12.6	0.0	2.0	0.0	0.0
	Ocp	1.0	1.5	2.2	2.5	12.0	1.9	0.0	6.8	0.0	0.0
1700-1800	Pro	0.8	59.0	28.7	0.8	3.1	5.0	0.0	2.7	0.0	0.0
	Ocp	1.0	1.7	2.5	2.0	12.4	1.4	0.0	8.9	0.0	0.0
1800-1900 Peak hour	Pro	2.0	66.6	25.2	0.3	2.3	2.0	0.0	1.6	0.0	0.0
	Ocp	1.0	1.6	2.4	1.0	12.3	1.3	0.0	9.8	0.0	0.0
1900-2000	Pro	0.4	64.5	30.9	0.0	2.1	1.1	0.0	1.1	0.0	0.0
	Ocp	1.0	1.6	2.1	0.0	16.7	1.3	0.0	7.0	0.0	0.0
2000-2100	Pro	0.5	57.3	39.5	0.0	1.6	0.0	0.0	1.1	0.0	0.0
	Ocp	1.0	1.5	1.7	0.0	8.7	0.0	0.0	10.0	0.0	0.0
2100-2200	Pro	2.4	52.0	40.8	0.8	4.0	0.0	0.0	0.0	0.0	0.0
	Ocp	1.0	1.5	2.4	2.0	7.6	0.0	0.0	0.0	0.0	0.0
2200-2300	Pro	1.2	51.2	41.9	0.0	5.8	0.0	0.0	0.0	0.0	0.0
	Ocp	1.0	1.3	2.2	0.0	6.6	0.0	0.0	0.0	0.0	0.0
16 hours	Pro	1.2	62.5	26.2	0.8	2.0	5.3	0.1	1.9	0.0	0.0
	Ocp	1.0	1.5	2.2	4.6	11.8	1.8	1.3	8.9	0.0	0.0

**Legend**

**Pro.** Proportion of vehicles in % (Sum may not add up to 100% due to figure rounding)  
**Ocp.** Average occupancy of vehicles  
**M&H** Medium and Heavy