

YEAR 2012

COVERAGE (B) STATION 2206

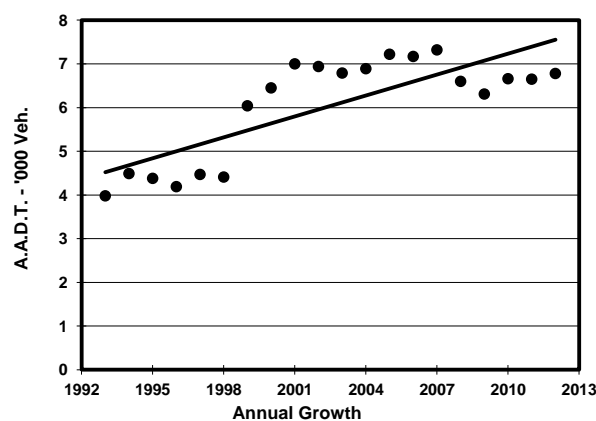
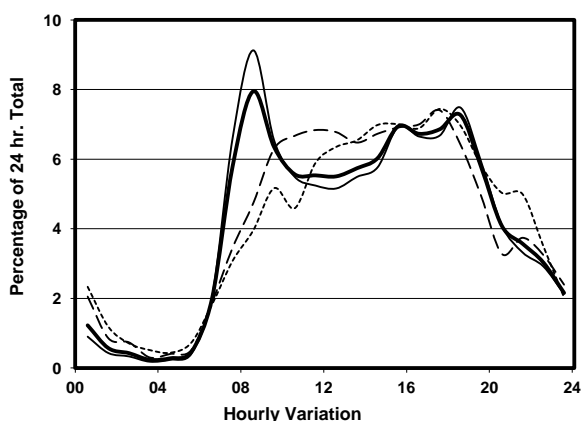
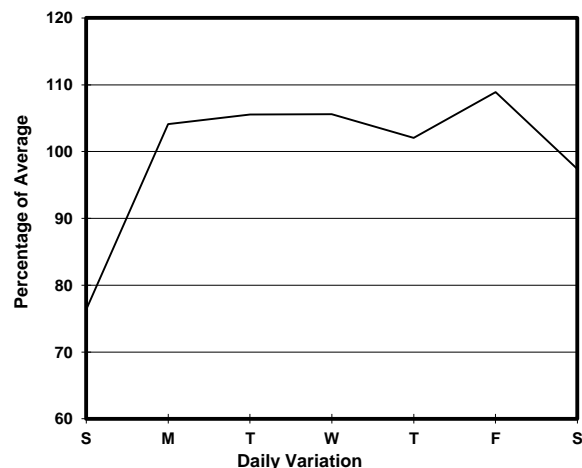
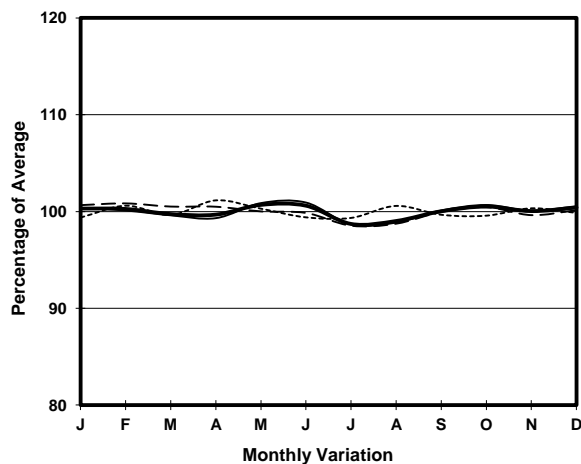
ROAD NETWORK MAJOR

ROAD TYPE DISTRICT DISTRIBUTOR

LINK BELCHER'S ST & VICTORIA RD (from SMITHFIELD RD to MOUNT DAVIS RD)



1. TRAFFIC FLOW VARIATION AND GROWTH



2. TRAFFIC CHARACTERISTICS (BY DIRECTION)

Parameter	All - Day	Mon. - Fri.	Sat.	Sun.
EAST BOUND				
A.A.D.T.	3260	3510	3140	2410
R 12 / 24 - %	77.6	78.9	75.9	70.7
R 16 / 24 - %	92.9	93.8	90.5	89.6
AM Peak Hour	0800-0900	0800-0900	0900-1000	0900-1000
One-way flow at AM peak hour	310	390	190	130
T - % (AM)	-	11.1	-	-
PM Peak Hour	1800-1900	1800-1900	1700-1800	1800-1900
One-way flow at PM peak hour	250	270	260	180
T - % (PM)	-	17.5	-	-
Prop.of commercial vehicles - 16 hr.	-	16.3	-	-
WEST BOUND				
A.A.D.T.	3520	3720	3550	2830
R 12 / 24 - %	75	75.5	75.5	71
R 16 / 24 - %	92.5	93	91.2	90.8
AM Peak Hour	0800-0900	0800-0900	0900-1000	0900-1000
One-way flow at AM peak hour	230	270	230	140
T - % (AM)	-	15.7	-	-
PM Peak Hour	1800-1900	1800-1900	1600-1700	1700-1800
One-way flow at PM peak hour	250	270	260	220
T - % (PM)	-	9.7	-	-
Prop.of commercial vehicles - 16 hr.	-	13.3	-	-

3. OTHER INFORMATION AND COMMENT

4. Vehicle classification and occupancy - Monday to Friday

Time		Class of vehicle									
		Motor	Private	Taxi	Private	PLB	Goods veh.		Non	Fr. Bus	
		Cycle	Car		LB		Light	M & H	Fr. Bus	SD	DD
0700-0800	Pro	2.3	29.3	21.6	1.5	13.1	6.2	13.1	7.7	1.9	3.1
	Ocp	1.0	1.6	2.5	13.5	11.6	2.3	1.3	11.9	30.8	17.1
0800-0900 Peak hour	Pro	1.4	44.3	21.7	6.5	8.3	5.5	4.2	5.1	1.5	1.6
	Ocp	1.0	1.5	2.1	7.9	13.4	2.2	1.3	17.1	25.8	16.2
0900-1000	Pro	1.8	47.5	12.3	0.6	5.9	17.6	6.5	4.1	1.5	2.3
	Ocp	1.0	1.3	2.1	3.0	9.1	1.9	1.2	1.6	17.2	9.5
1000-1100	Pro	3.6	32.4	18.7	1.4	9.4	20.9	6.5	2.9	1.6	2.5
	Ocp	1.0	1.6	1.9	2.5	9.8	1.7	2.1	2.3	14.7	5.0
1100-1200	Pro	1.9	41.2	15.9	1.9	11.2	12.2	8.4	1.9	2.1	3.3
	Ocp	1.0	1.6	2.1	2.0	8.8	1.8	1.4	2.0	11.4	5.0
1200-1300	Pro	0.0	39.7	16.2	3.2	12.1	12.1	10.5	1.6	2.2	2.2
	Ocp	0.0	1.3	2.4	10.8	11.5	1.6	1.3	6.5	18.5	7.6
1300-1400	Pro	2.3	33.4	18.2	3.0	12.1	14.4	10.6	1.5	2.3	2.1
	Ocp	1.0	1.5	1.6	2.8	9.9	1.7	1.3	10.5	17.3	5.9
1400-1500	Pro	4.5	35.2	15.7	1.5	10.5	17.2	8.2	3.0	1.5	2.6
	Ocp	1.0	1.6	1.6	1.0	7.4	1.7	1.5	1.3	10.3	3.9
1500-1600	Pro	2.1	34.2	14.4	2.1	11.0	21.9	8.9	1.4	1.9	2.2
	Ocp	1.0	1.4	2.2	4.7	11.4	1.9	1.4	16.0	22.0	4.7
1600-1700	Pro	2.1	34.3	12.9	1.4	9.3	19.3	11.5	5.0	2.0	2.1
	Ocp	1.3	1.4	2.2	4.0	11.9	1.9	1.4	1.6	22.5	8.6
1700-1800	Pro	2.6	42.0	22.3	1.3	9.2	5.9	6.6	5.9	1.8	2.5
	Ocp	1.0	1.7	1.9	1.0	12.8	1.9	1.1	10.9	30.1	11.5
1800-1900	Pro	3.0	45.2	24.4	1.2	8.3	4.2	1.8	8.3	1.6	1.9
	Ocp	1.2	1.7	2.0	4.5	14.8	1.3	1.0	18.4	30.0	13.5
1900-2000	Pro	1.5	50.2	14.8	0.0	12.5	8.1	5.2	3.0	2.0	2.8
	Ocp	1.0	1.4	1.5	0.0	10.7	1.4	1.3	15.8	21.6	7.6
2000-2100	Pro	3.0	48.3	24.6	1.0	10.8	3.0	0.0	3.0	2.7	3.7
	Ocp	1.0	1.4	1.6	3.0	8.9	1.3	0.0	8.0	12.9	6.5
2100-2200	Pro	1.0	45.0	34.2	0.0	9.8	2.9	1.0	0.0	2.7	3.4
	Ocp	1.0	1.6	1.7	0.0	7.2	2.3	1.0	0.0	12.1	3.4
2200-2300	Pro	5.7	37.5	37.5	0.0	10.2	2.3	1.1	0.0	1.7	4.0
	Ocp	1.2	1.5	1.5	0.0	6.6	1.5	1.0	0.0	18.2	5.4
16 hours	Pro	2.3	40.2	19.7	1.9	10.0	11.1	6.6	3.7	1.9	2.5
	Ocp	1.1	1.5	1.9	5.9	10.6	1.8	1.4	10.6	20.1	8.3

Legend

Pro. Proportion of vehicles in % (Sum may not add up to 100% due to figure rounding)
Ocp. Average occupancy of vehicles
M&H Medium and Heavy