

YEAR 2012

COVERAGE (B) STATION 2209

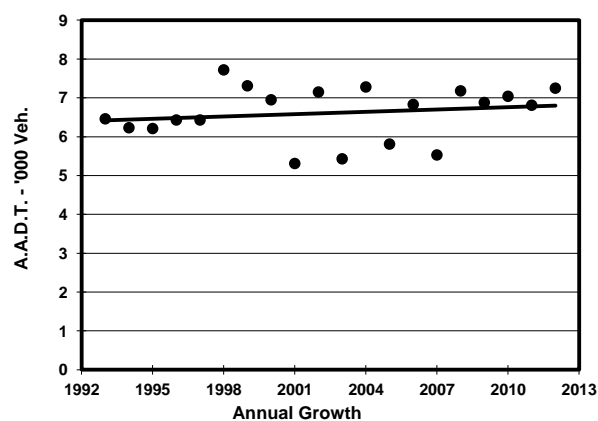
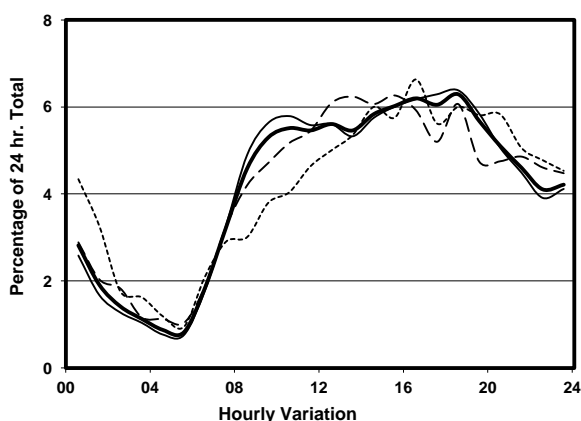
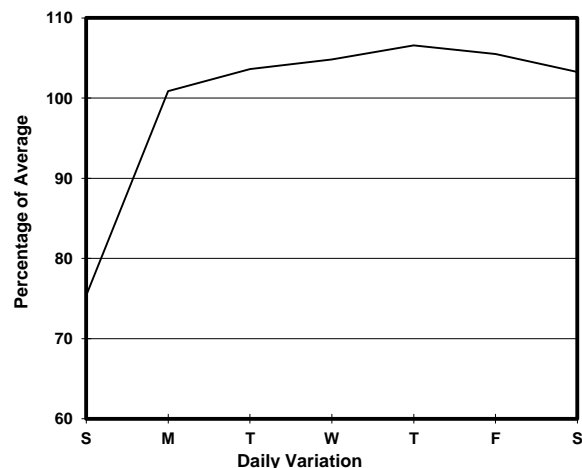
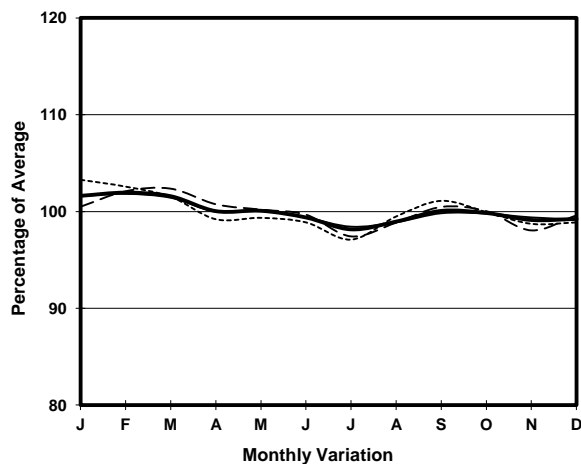
ROAD NETWORK MAJOR

ROAD TYPE DISTRICT DISTRIBUTOR

LINK DES VOEUX RD C (from MORRISON ST to QUEEN VICTORIA ST)



## 1. TRAFFIC FLOW VARIATION AND GROWTH



## 2. TRAFFIC CHARACTERISTICS (BY DIRECTION)

Parameter	All - Day	Mon. - Fri.	Sat.	Sun.
<b>EAST BOUND</b>				
A.A.D.T.	4570	4830	4980	3250
R 12 / 24 - %	63.5	65.2	61.7	53.7
R 16 / 24 - %	82.6	84	80.6	75.6
AM Peak Hour	0900-1000	0900-1000	0900-1000	0900-1000
One-way flow at AM peak hour	210	250	180	90
T - % (AM)	-	21.8	-	-
PM Peak Hour	1600-1700	1600-1700	1600-1700	1600-1700
One-way flow at PM peak hour	290	320	300	210
T - % (PM)	-	14.8	-	-
Prop.of commercial vehicles - 16 hr.	-	16.9	-	-
<b>WEST BOUND</b>				
A.A.D.T.	2680	2830	2600	2280
R 12 / 24 - %	69	69.2	70.2	66
R 16 / 24 - %	89.1	89.3	89.3	86.9
AM Peak Hour	0900-1000	0900-1000	0900-1000	0900-1000
One-way flow at AM peak hour	170	180	180	120
T - % (AM)	-	100	-	-
PM Peak Hour	1800-1900	1800-1900	1800-1900	1600-1700
One-way flow at PM peak hour	190	200	180	160
T - % (PM)	-	89.7	-	-
Prop.of commercial vehicles - 16 hr.	-	88.7	-	-

## 3. OTHER INFORMATION AND COMMENT

**4. Vehicle classification and occupancy - Monday to Friday**

Time		Class of vehicle									
		Motor Cycle	Private Car	Taxi	Private LB	PLB	Goods veh.		Non Fr. Bus	Fr. Bus	
							Light	M & H		SD	DD
0700-0800	Pro	0.0	5.3	13.2	0.0	0.0	13.2	0.0	2.6	3.9	61.8
	Ocp	0.0	1.0	2.0	0.0	0.0	1.6	0.0	13.0	31.5	23.4
0800-0900	Pro	0.0	13.6	16.7	0.0	0.0	7.6	0.0	10.6	1.9	49.6
	Ocp	0.0	1.6	1.5	0.0	0.0	2.2	0.0	11.9	37.2	25.4
0900-1000	Pro	1.2	16.5	21.2	0.0	0.0	13.0	1.2	0.0	1.2	45.7
	Ocp	1.0	1.1	2.2	0.0	0.0	1.4	2.0	0.0	39.3	17.7
1000-1100	Pro	2.5	20.4	24.2	1.3	0.0	15.3	2.5	0.0	0.6	33.1
	Ocp	1.0	1.6	1.3	4.0	0.0	1.4	3.0	0.0	11.5	14.1
1100-1200	Pro	3.0	25.8	16.7	1.5	0.0	13.6	0.0	0.0	0.8	38.6
	Ocp	1.0	1.4	1.5	2.0	0.0	1.7	0.0	0.0	12.5	15.1
1200-1300	Pro	3.0	29.9	16.4	0.0	0.0	13.4	0.0	0.0	1.1	36.2
	Ocp	1.0	1.4	2.3	0.0	0.0	2.0	0.0	0.0	9.3	16.8
1300-1400	Pro	0.0	39.2	19.0	0.0	0.0	6.3	1.3	0.0	0.6	33.5
	Ocp	0.0	1.4	1.6	0.0	0.0	1.8	2.0	0.0	5.0	17.9
1400-1500	Pro	1.2	33.5	15.0	2.3	0.0	19.7	0.0	0.0	0.6	27.7
	Ocp	1.0	1.7	1.8	3.0	0.0	1.6	0.0	0.0	14.0	18.2
1500-1600	Pro	2.2	47.8	13.3	0.0	0.0	6.7	0.0	0.0	0.6	29.4
	Ocp	1.0	1.6	1.6	0.0	0.0	1.3	0.0	0.0	10.5	19.1
1600-1700	Pro	3.3	40.8	4.4	0.0	0.0	16.5	1.1	0.0	0.8	33.1
	Ocp	1.0	1.7	1.8	0.0	0.0	1.3	4.0	0.0	11.0	23.6
1700-1800	Pro	0.0	38.8	7.8	0.0	0.0	4.7	0.0	0.0	0.4	48.5
	Ocp	0.0	1.4	1.6	0.0	0.0	1.7	0.0	0.0	15.0	32.7
1800-1900 Peak hour	Pro	0.0	44.4	6.2	1.2	0.0	6.2	0.0	0.0	0.9	41.1
	Ocp	0.0	1.8	1.2	3.0	0.0	1.8	0.0	0.0	13.7	49.3
1900-2000	Pro	1.0	34.8	24.9	1.0	0.0	5.0	0.0	0.0	0.7	32.6
	Ocp	1.0	1.5	1.3	1.0	0.0	1.8	0.0	0.0	10.0	38.1
2000-2100	Pro	0.0	21.3	40.0	1.3	0.0	1.3	1.3	0.0	0.9	34.1
	Ocp	0.0	1.7	1.0	1.0	0.0	2.0	1.0	0.0	7.7	30.3
2100-2200	Pro	0.0	10.0	54.5	1.4	0.0	0.0	0.0	0.0	0.7	33.3
	Ocp	0.0	1.9	1.1	2.0	0.0	0.0	0.0	0.0	7.5	28.0
2200-2300	Pro	0.0	13.7	29.7	0.0	0.0	0.0	0.0	0.0	1.1	55.4
	Ocp	0.0	2.0	1.1	0.0	0.0	0.0	0.0	0.0	3.5	30.3
16 hours	Pro	1.2	29.0	20.0	0.7	0.0	9.1	0.5	0.7	0.9	37.9
	Ocp	1.0	1.6	1.4	2.4	0.0	1.6	2.5	12.0	18.5	25.5

**Legend**

- Pro.** Proportion of vehicles in % (Sum may not add up to 100% due to figure rounding)
- Ocp.** Average occupancy of vehicles
- M&H** Medium and Heavy