

YEAR 2012

COVERAGE (B) STATION 2401

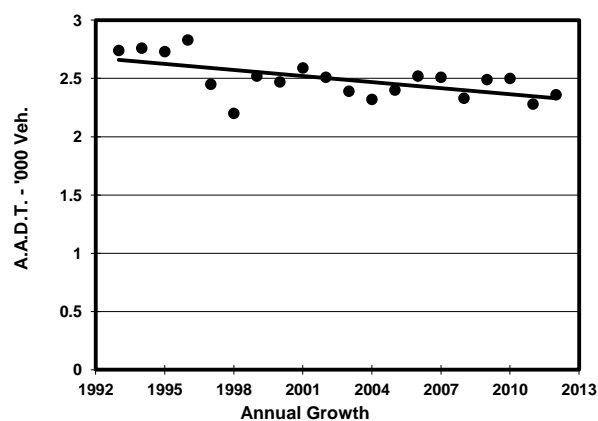
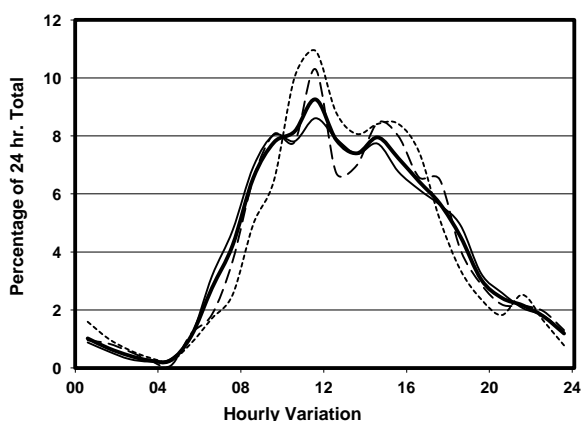
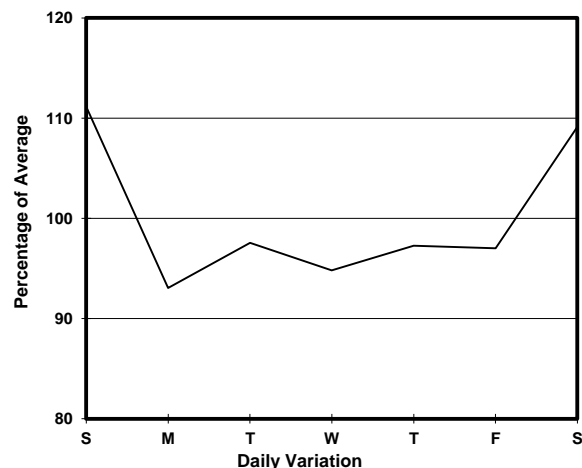
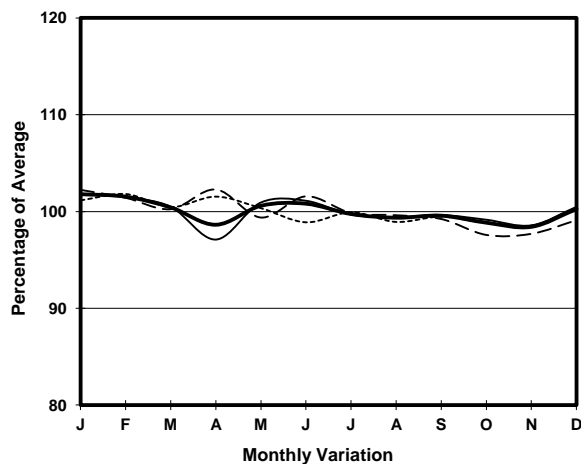
ROAD NETWORK MINOR

ROAD TYPE LOCAL DISTRIBUTOR

LINK LIN SHING RD (from WAN TSUI RD to CAPE COLLISION RD)



1. TRAFFIC FLOW VARIATION AND GROWTH



2. TRAFFIC CHARACTERISTICS (BY DIRECTION)

| Parameter | All - Day | Mon. - Fri. | Sat. | Sun. |
|--------------------------------------|-----------|-------------|-----------|-----------|
| SOUTH BOUND | | | | |
| A.A.D.T. | 1860 | 1820 | 1960 | 1890 |
| R 12 / 24 - % | 81.3 | 81.3 | 81.7 | 81.7 |
| R 16 / 24 - % | 91.6 | 91.6 | 91.8 | 92 |
| AM Peak Hour | 0900-1000 | 0900-1000 | 0900-1000 | 0900-1000 |
| One-way flow at AM peak hour | 150 | 150 | 160 | 130 |
| T - % (AM) | - | 13.6 | - | - |
| PM Peak Hour | 1600-1700 | 1600-1700 | 1700-1800 | 1600-1700 |
| One-way flow at PM peak hour | 120 | 110 | 130 | 140 |
| T - % (PM) | - | 3.1 | - | - |
| Prop.of commercial vehicles - 16 hr. | - | 12.2 | - | - |
| NORTH BOUND | | | | |
| A.A.D.T. | 500 | 430 | 600 | 720 |
| R 12 / 24 - % | 89.3 | 88.2 | 90.3 | 91.8 |
| R 16 / 24 - % | 95.4 | 95.2 | 96.6 | 95 |
| AM Peak Hour | 0900-1000 | 0900-1000 | 0900-1000 | 0900-1000 |
| One-way flow at AM peak hour | 40 | 30 | 50 | 40 |
| T - % (AM) | - | 25 | - | - |
| PM Peak Hour | 1600-1700 | 1600-1700 | 1600-1700 | 1600-1700 |
| One-way flow at PM peak hour | 40 | 30 | 50 | 50 |
| T - % (PM) | - | 12.5 | - | - |
| Prop.of commercial vehicles - 16 hr. | - | 7.8 | - | - |

3. OTHER INFORMATION AND COMMENT

4. Vehicle classification and occupancy - Monday to Friday

| Time | | Class of vehicle | | | | | | | | | |
|------------------------|-----|------------------|---------|------|---------|------|------------|-------|---------|---------|-----|
| | | Motor | Private | Taxi | Private | PLB | Goods veh. | | Non | Fr. Bus | |
| | | Cycle | Car | | LB | | Light | M & H | Fr. Bus | SD | DD |
| 0700-0800 | Pro | 4.8 | 19.0 | 4.8 | 4.8 | 19.0 | 19.0 | 4.8 | 23.8 | 0.0 | 0.0 |
| | Ocp | 2.0 | 1.0 | 1.0 | 15.0 | 17.0 | 2.3 | 2.0 | 11.6 | 0.0 | 0.0 |
| 0800-0900 | Pro | 0.0 | 35.1 | 10.8 | 8.1 | 18.9 | 21.6 | 0.0 | 5.4 | 0.0 | 0.0 |
| | Ocp | 0.0 | 1.4 | 3.0 | 6.3 | 14.7 | 3.3 | 0.0 | 10.5 | 0.0 | 0.0 |
| 0900-1000 | Pro | 0.0 | 38.5 | 15.4 | 5.8 | 5.8 | 19.2 | 5.8 | 9.6 | 0.0 | 0.0 |
| | Ocp | 0.0 | 1.3 | 1.9 | 3.7 | 17.0 | 2.4 | 1.0 | 9.8 | 0.0 | 0.0 |
| 1000-1100 | Pro | 2.1 | 21.3 | 19.1 | 10.6 | 6.4 | 23.4 | 6.4 | 10.6 | 0.0 | 0.0 |
| | Ocp | 1.0 | 1.4 | 2.6 | 2.8 | 14.3 | 1.3 | 1.0 | 9.4 | 0.0 | 0.0 |
| 1100-1200 Peak hour | Pro | 5.6 | 28.2 | 16.9 | 9.9 | 4.2 | 22.5 | 2.8 | 9.9 | 0.0 | 0.0 |
| | Ocp | 1.3 | 1.3 | 1.8 | 3.9 | 9.7 | 1.8 | 1.0 | 14.3 | 0.0 | 0.0 |
| 1200-1300 | Pro | 12.2 | 24.4 | 19.5 | 4.9 | 4.9 | 22.0 | 4.9 | 7.3 | 0.0 | 0.0 |
| | Ocp | 1.2 | 1.5 | 1.6 | 4.0 | 8.5 | 1.8 | 1.0 | 5.0 | 0.0 | 0.0 |
| 1300-1400 | Pro | 13.9 | 44.4 | 11.1 | 0.0 | 2.8 | 19.4 | 0.0 | 8.3 | 0.0 | 0.0 |
| | Ocp | 1.2 | 1.5 | 2.0 | 0.0 | 15.0 | 1.7 | 0.0 | 6.7 | 0.0 | 0.0 |
| 1400-1500 | Pro | 2.9 | 28.6 | 17.1 | 8.6 | 8.6 | 22.9 | 5.7 | 5.7 | 0.0 | 0.0 |
| | Ocp | 1.0 | 1.6 | 1.3 | 5.0 | 12.3 | 2.3 | 1.0 | 5.5 | 0.0 | 0.0 |
| 1500-1600 | Pro | 4.0 | 36.0 | 22.0 | 0.0 | 8.0 | 18.0 | 0.0 | 12.0 | 0.0 | 0.0 |
| | Ocp | 1.0 | 1.6 | 1.9 | 0.0 | 6.3 | 2.0 | 0.0 | 7.8 | 0.0 | 0.0 |
| 1600-1700 | Pro | 10.0 | 30.0 | 22.5 | 2.5 | 2.5 | 27.5 | 0.0 | 5.0 | 0.0 | 0.0 |
| | Ocp | 1.0 | 1.5 | 1.3 | 4.0 | 12.0 | 1.4 | 0.0 | 8.0 | 0.0 | 0.0 |
| 1700-1800 | Pro | 3.6 | 57.1 | 10.7 | 0.0 | 10.7 | 3.6 | 3.6 | 10.7 | 0.0 | 0.0 |
| | Ocp | 1.0 | 2.1 | 1.3 | 0.0 | 6.3 | 2.0 | 1.0 | 2.0 | 0.0 | 0.0 |
| 1800-1900 | Pro | 3.7 | 33.3 | 14.8 | 0.0 | 14.8 | 25.9 | 3.7 | 3.7 | 0.0 | 0.0 |
| | Ocp | 1.0 | 1.3 | 1.3 | 0.0 | 7.8 | 1.3 | 1.0 | 8.0 | 0.0 | 0.0 |
| 1900-2000 | Pro | 11.1 | 55.6 | 5.6 | 0.0 | 11.1 | 16.7 | 0.0 | 0.0 | 0.0 | 0.0 |
| | Ocp | 1.0 | 1.8 | 1.0 | 0.0 | 10.5 | 1.3 | 0.0 | 0.0 | 0.0 | 0.0 |
| 2000-2100 | Pro | 0.0 | 40.0 | 10.0 | 0.0 | 10.0 | 30.0 | 0.0 | 10.0 | 0.0 | 0.0 |
| | Ocp | 0.0 | 1.3 | 1.0 | 0.0 | 6.0 | 1.0 | 0.0 | 2.0 | 0.0 | 0.0 |
| 2100-2200 | Pro | 5.9 | 58.8 | 5.9 | 0.0 | 5.9 | 11.8 | 11.8 | 0.0 | 0.0 | 0.0 |
| | Ocp | 1.0 | 2.0 | 2.0 | 0.0 | 7.0 | 1.0 | 2.0 | 0.0 | 0.0 | 0.0 |
| 2200-2300 | Pro | 25.0 | 33.3 | 16.7 | 0.0 | 16.7 | 8.3 | 0.0 | 0.0 | 0.0 | 0.0 |
| | Ocp | 1.3 | 1.5 | 1.0 | 0.0 | 5.5 | 3.0 | 0.0 | 0.0 | 0.0 | 0.0 |
| 16 hours | Pro | 5.7 | 34.3 | 15.5 | 4.6 | 8.1 | 20.3 | 3.1 | 8.3 | 0.0 | 0.0 |
| | Ocp | 1.2 | 1.5 | 1.8 | 4.5 | 11.3 | 1.8 | 1.2 | 8.9 | 0.0 | 0.0 |

Legend

Pro. Proportion of vehicles in % (Sum may not add up to 100% due to figure rounding)
Ocp. Average occupancy of vehicles
M&H Medium and Heavy