

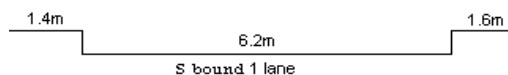
YEAR 2012

COVERAGE (B) STATION 2405

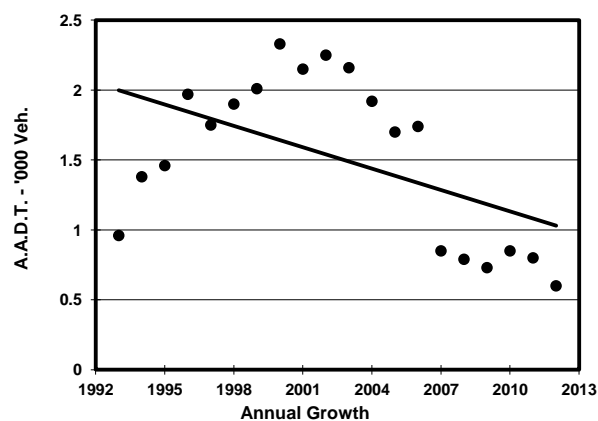
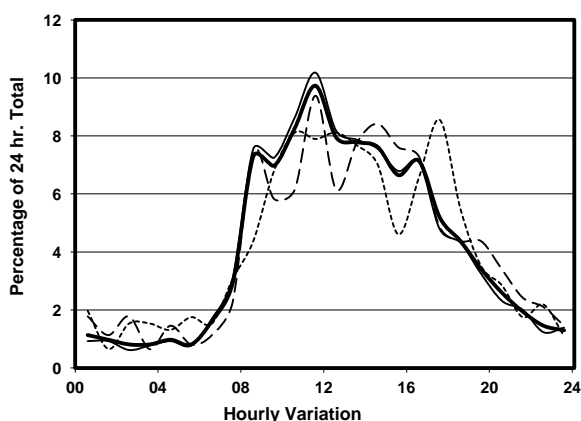
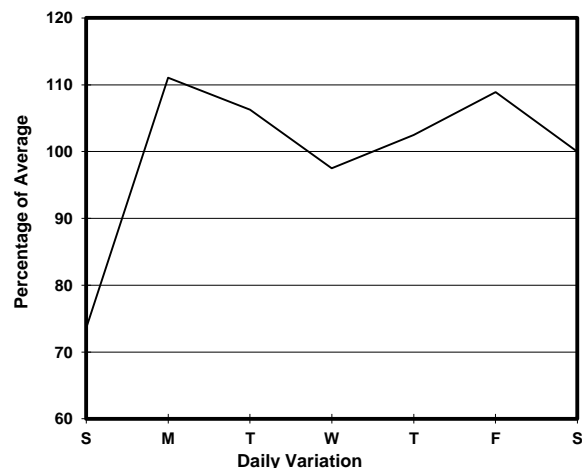
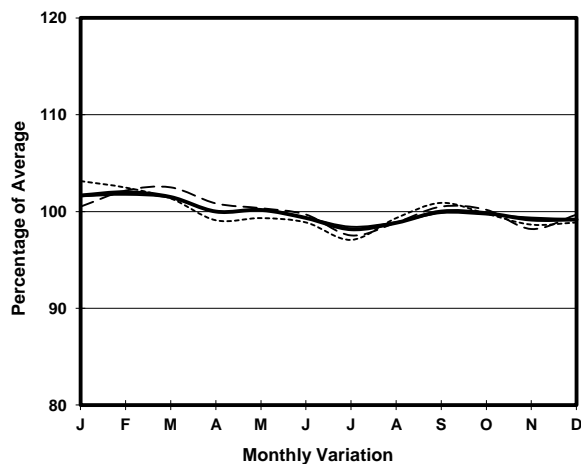
ROAD NETWORK MINOR

ROAD TYPE LOCAL DISTRIBUTOR

LINK COCHRANE ST (from QUEEN'S RD C to WELLINGTON ST)



1. TRAFFIC FLOW VARIATION AND GROWTH



2. TRAFFIC CHARACTERISTICS (BY DIRECTION)

Parameter	All - Day	Mon. - Fri.	Sat.	Sun.
SOUTH BOUND				
A.A.D.T.	600	640	610	450
R 12 / 24 - %	81.8	83.3	77.5	78.3
R 16 / 24 - %	91.2	92.1	89.8	88.6
AM Peak Hour	0800-0900	0800-0900	0800-0900	0900-1000
One-way flow at AM peak hour	40	50	50	30
T - % (AM)	-	-	-	-
PM Peak Hour	1600-1700	1600-1700	1600-1700	1700-1800
One-way flow at PM peak hour	40	50	40	40
T - % (PM)	-	-	-	-
Prop.of commercial vehicles - 16 hr.	-	-	-	-
 A.A.D.T.	-	-	-	-
R 12 / 24 - %	-	-	-	-
R 16 / 24 - %	-	-	-	-
AM Peak Hour	-	-	-	-
One-way flow at AM peak hour	-	-	-	-
T - % (AM)	-	-	-	-
PM Peak Hour	-	-	-	-
One-way flow at PM peak hour	-	-	-	-
T - % (PM)	-	-	-	-
Prop.of commercial vehicles - 16 hr.	-	-	-	-

3. OTHER INFORMATION AND COMMENT

4. Vehicle classification and occupancy - Monday to Friday

Time		Class of vehicle									
		Motor	Private	Taxi	Private	PLB	Goods veh.		Non	Fr. Bus	
		Cycle	Car		LB		Light	M & H	Fr. Bus	SD	DD
0700-0800	Pro	0.0	0.0	33.3	0.0	0.0	66.7	0.0	0.0	0.0	0.0
	Ocp	0.0	0.0	1.0	0.0	0.0	1.0	0.0	0.0	0.0	0.0
0800-0900	Pro	0.0	12.5	50.0	0.0	37.5	0.0	0.0	0.0	0.0	0.0
	Ocp	0.0	1.0	2.0	0.0	7.7	0.0	0.0	0.0	0.0	0.0
0900-1000	Pro	0.0	0.0	14.3	0.0	57.1	28.6	0.0	0.0	0.0	0.0
	Ocp	0.0	0.0	1.0	0.0	4.3	1.5	0.0	0.0	0.0	0.0
1000-1100	Pro	0.0	0.0	12.5	0.0	37.5	50.0	0.0	0.0	0.0	0.0
	Ocp	0.0	0.0	1.0	0.0	3.3	1.5	0.0	0.0	0.0	0.0
1100-1200 Peak hour	Pro	0.0	27.3	18.2	0.0	27.3	27.3	0.0	0.0	0.0	0.0
	Ocp	0.0	1.0	1.5	0.0	5.3	1.7	0.0	0.0	0.0	0.0
1200-1300	Pro	0.0	50.0	10.0	0.0	20.0	20.0	0.0	0.0	0.0	0.0
	Ocp	0.0	1.4	2.0	0.0	3.5	1.5	0.0	0.0	0.0	0.0
1300-1400	Pro	0.0	42.9	14.3	0.0	28.6	14.3	0.0	0.0	0.0	0.0
	Ocp	0.0	1.7	1.0	0.0	3.5	3.0	0.0	0.0	0.0	0.0
1400-1500	Pro	0.0	14.3	0.0	0.0	57.1	28.6	0.0	0.0	0.0	0.0
	Ocp	0.0	1.0	0.0	0.0	4.3	1.5	0.0	0.0	0.0	0.0
1500-1600	Pro	0.0	16.7	0.0	0.0	50.0	33.3	0.0	0.0	0.0	0.0
	Ocp	0.0	1.0	0.0	0.0	5.7	2.0	0.0	0.0	0.0	0.0
1600-1700	Pro	0.0	28.6	14.3	0.0	0.0	57.1	0.0	0.0	0.0	0.0
	Ocp	0.0	1.0	1.0	0.0	0.0	1.5	0.0	0.0	0.0	0.0
1700-1800	Pro	0.0	100.0	0.0	0.0	0.0	0.0	0.0	0.0	0.0	0.0
	Ocp	0.0	1.0	0.0	0.0	0.0	0.0	0.0	0.0	0.0	0.0
1800-1900	Pro	0.0	100.0	0.0	0.0	0.0	0.0	0.0	0.0	0.0	0.0
	Ocp	0.0	3.0	0.0	0.0	0.0	0.0	0.0	0.0	0.0	0.0
1900-2000	Pro	20.0	60.0	0.0	0.0	0.0	20.0	0.0	0.0	0.0	0.0
	Ocp	1.0	1.3	0.0	0.0	0.0	1.0	0.0	0.0	0.0	0.0
2000-2100	Pro	0.0	100.0	0.0	0.0	0.0	0.0	0.0	0.0	0.0	0.0
	Ocp	0.0	1.0	0.0	0.0	0.0	0.0	0.0	0.0	0.0	0.0
2100-2200	Pro	0.0	33.3	33.3	0.0	0.0	33.3	0.0	0.0	0.0	0.0
	Ocp	0.0	2.0	2.0	0.0	0.0	1.0	0.0	0.0	0.0	0.0
2200-2300	Pro	0.0	0.0	0.0	0.0	0.0	0.0	0.0	0.0	0.0	0.0
	Ocp	0.0	0.0	0.0	0.0	0.0	0.0	0.0	0.0	0.0	0.0
16 hours	Pro	1.2	28.7	14.9	0.0	27.6	27.6	0.0	0.0	0.0	0.0
	Ocp	1.0	1.3	1.5	0.0	4.8	1.5	0.0	0.0	0.0	0.0

Legend

Pro. Proportion of vehicles in % (Sum may not add up to 100% due to figure rounding)
Ocp. Average occupancy of vehicles
M&H Medium and Heavy