

YEAR

2012

LINK

TAI PO RD (from CALDECOTT RD to TAI PO RD INT)

COVERAGE (B) STATION

4201

ROAD NETWORK

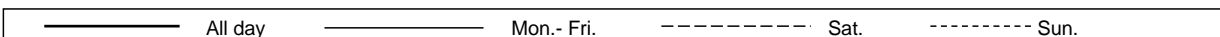
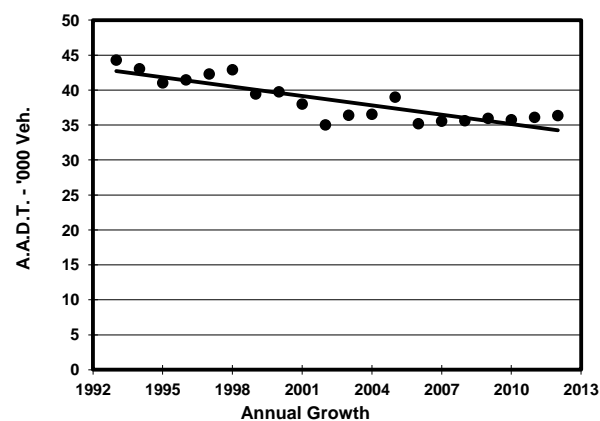
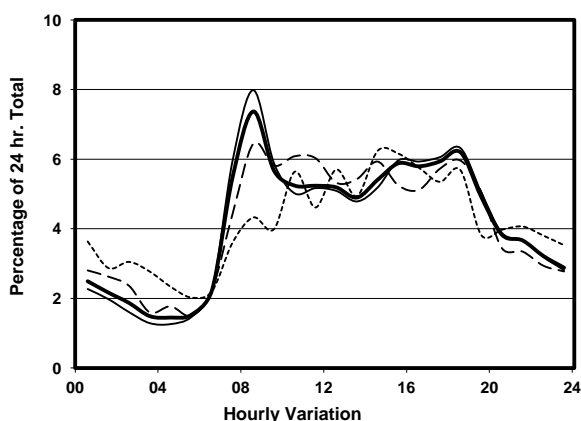
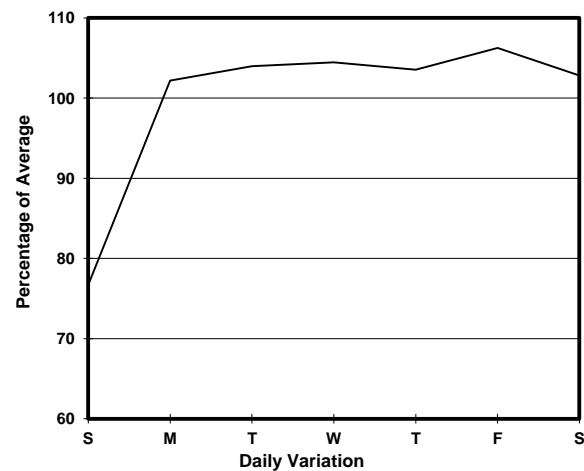
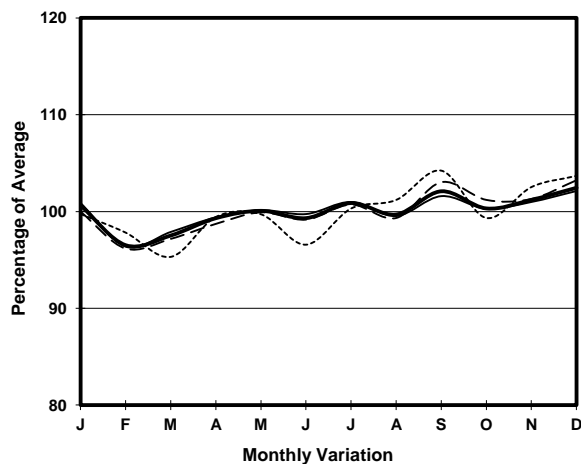
MAJOR

ROAD TYPE

PRIMARY DISTRIBUTOR



1. TRAFFIC FLOW VARIATION AND GROWTH



2. TRAFFIC CHARACTERISTICS (BY DIRECTION)

Parameter	All - Day	Mon. - Fri.	Sat.	Sun.
EAST BOUND				
A.A.D.T.	20690	21870	21630	15670
R 12 / 24 - %	69	70.4	66.7	61.8
R 16 / 24 - %	82.7	84.1	80.7	75.4
AM Peak Hour	0800-0900	0800-0900	0800-0900	0800-0900
One-way flow at AM peak hour	1880	2170	1700	730
T - % (AM)	-	6.8	-	-
PM Peak Hour	1800-1900	1800-1900	1800-1900	1800-1900
One-way flow at PM peak hour	1180	1250	1170	960
T - % (PM)	-	5.4	-	-
Prop.of commercial vehicles - 16 hr.	-	8.1	-	-
WEST BOUND				
A.A.D.T.	15660	16430	16240	12590
R 12 / 24 - %	67.4	67.8	68.7	62.2
R 16 / 24 - %	85.4	86.4	84.4	80.4
AM Peak Hour	0900-1000	0800-0900	0900-1000	0800-0900
One-way flow at AM peak hour	810	890	890	490
T - % (AM)	-	9.6	-	-
PM Peak Hour	1800-1900	1800-1900	1800-1900	1700-1800
One-way flow at PM peak hour	1070	1170	1090	750
T - % (PM)	-	7.3	-	-
Prop.of commercial vehicles - 16 hr.	-	10.1	-	-

3. OTHER INFORMATION AND COMMENT

Coverage (B) Station 4201
Year 2012

4. Vehicle classification and occupancy - Monday to Friday

Time		Class of vehicle									
		Motor Cycle	Private Car	Taxi	Private LB	PLB	Goods veh.		Non Fr. Bus	Fr. Bus	
							Light	M & H		SD	DD
0700-0800	Pro	10.6	28.6	21.1	2.3	1.0	24.7	6.2	3.9	0.0	1.7
	Ocp	1.0	1.4	1.8	8.6	10.0	1.3	1.2	10.1	0.0	55.7
0800-0900 Peak hour	Pro	7.6	50.8	13.6	0.9	0.3	19.0	4.3	2.4	0.0	1.1
	Ocp	1.0	1.4	1.7	5.7	10.0	1.4	1.4	14.0	0.0	57.1
0900-1000	Pro	5.3	38.2	20.6	0.6	0.2	25.1	7.8	0.8	0.0	1.5
	Ocp	1.1	1.3	1.5	1.0	1.0	1.5	1.2	1.0	0.0	35.8
1000-1100	Pro	4.2	35.1	19.5	0.7	0.0	28.7	9.4	0.7	0.0	1.6
	Ocp	1.0	1.3	1.3	2.3	0.0	1.3	1.2	1.0	0.0	33.3
1100-1200	Pro	6.9	32.5	18.7	0.5	0.3	30.5	8.7	0.5	0.0	1.5
	Ocp	1.0	1.4	1.5	1.0	1.0	1.4	1.2	1.0	0.0	38.1
1200-1300	Pro	6.8	33.0	19.8	1.3	0.3	27.3	8.6	1.0	0.0	2.0
	Ocp	1.0	1.5	1.6	1.6	9.0	1.3	1.3	7.3	0.0	29.1
1300-1400	Pro	5.9	37.8	17.4	2.7	0.5	23.1	6.1	4.7	0.1	1.8
	Ocp	1.1	1.5	1.6	10.5	10.5	1.4	1.4	20.4	1.0	40.5
1400-1500	Pro	4.8	32.7	16.6	0.8	0.3	34.3	8.0	0.8	0.0	1.7
	Ocp	1.1	1.5	1.5	2.3	14.0	1.5	1.2	1.0	0.0	38.2
1500-1600	Pro	3.6	37.9	16.3	0.6	0.3	30.5	7.5	1.1	0.1	2.2
	Ocp	1.1	1.4	1.5	10.5	5.0	1.4	1.1	8.8	1.0	29.2
1600-1700	Pro	6.8	33.9	22.5	0.2	0.5	27.9	4.8	1.5	0.0	1.8
	Ocp	1.1	1.5	1.2	1.0	14.5	1.4	1.3	5.0	0.0	40.2
1700-1800	Pro	9.0	31.5	20.5	1.8	0.3	26.5	6.3	2.3	0.0	1.9
	Ocp	1.0	1.5	1.3	1.9	17.0	1.5	1.3	2.3	0.0	51.7
1800-1900	Pro	14.9	46.4	16.5	0.2	0.4	15.2	4.0	0.7	0.0	1.7
	Ocp	1.0	1.4	1.4	4.0	12.5	1.3	1.2	1.0	0.0	64.2
1900-2000	Pro	7.7	54.0	17.8	0.0	0.7	15.3	2.7	0.2	0.0	1.5
	Ocp	1.1	1.5	1.4	0.0	6.3	1.5	1.2	1.0	0.0	55.0
2000-2100	Pro	9.7	39.1	29.7	0.3	1.4	14.2	2.8	0.7	0.0	2.2
	Ocp	1.1	1.4	1.3	4.0	11.0	1.4	1.3	11.5	0.0	40.3
2100-2200	Pro	11.9	36.7	32.3	0.4	0.7	11.9	4.0	0.0	0.0	2.2
	Ocp	1.2	1.7	1.2	4.0	13.5	1.4	1.4	0.0	0.0	32.8
2200-2300	Pro	9.9	34.5	44.4	0.3	1.0	4.9	1.6	1.0	0.0	2.3
	Ocp	1.1	1.6	1.3	1.0	12.7	1.4	1.0	8.7	0.0	31.3
16 hours	Pro	7.7	38.3	20.7	0.9	0.5	22.8	5.9	1.5	0.1	1.7
	Ocp	1.1	1.4	1.4	5.4	10.3	1.4	1.2	10.0	1.0	42.0

Legend

Pro. Proportion of vehicles in % (Sum may not add up to 100% due to figure rounding)
Ocp. Average occupancy of vehicles
M&H Medium and Heavy