

YEAR 2012

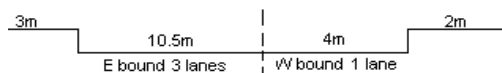
COVERAGE (B) STATION 4202

ROAD NETWORK MAJOR

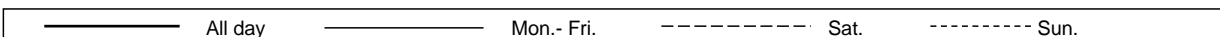
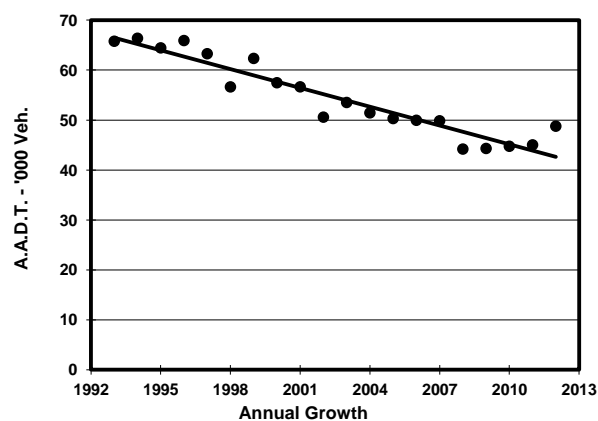
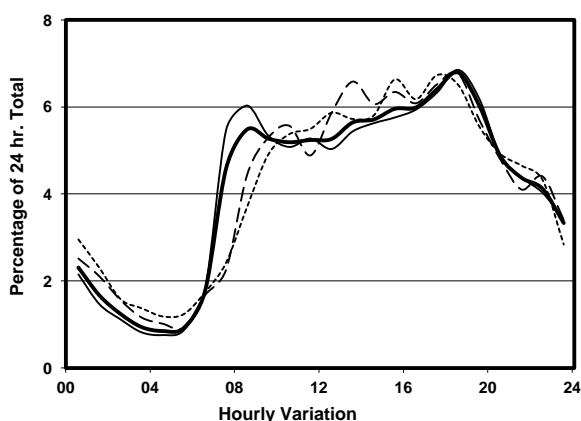
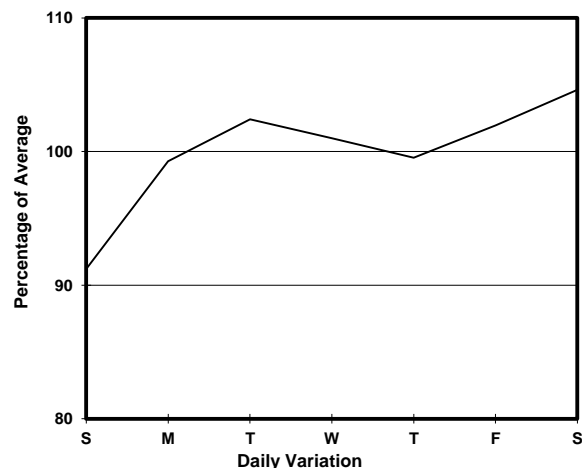
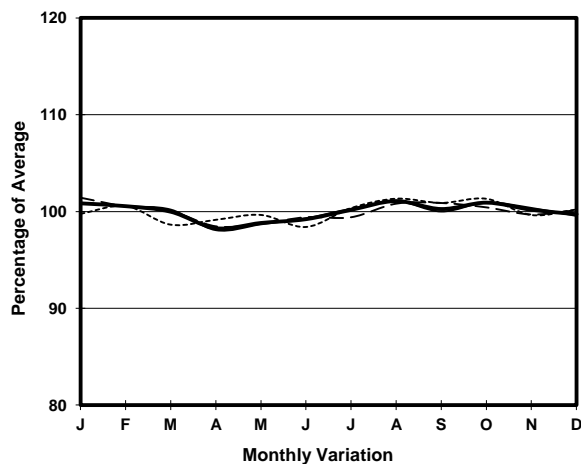
ROAD TYPE PRIMARY DISTRIBUTOR

LINK

BOUNDARY ST (from TAI HANG TUNG RD to EMBANKMENT RD)



## 1. TRAFFIC FLOW VARIATION AND GROWTH



## 2. TRAFFIC CHARACTERISTICS (BY DIRECTION)

Parameter	All - Day	Mon. - Fri.	Sat.	Sun.
<b>EAST BOUND</b>				
A.A.D.T.	40950	41550	43110	37150
R 12 / 24 - %	67.3	67.8	66.6	65
R 16 / 24 - %	86.6	87.3	85.5	84.6
AM Peak Hour	0800-0900	0800-0900	0900-1000	0900-1000
One-way flow at AM peak hour	2250	2510	2290	1810
T - % (AM)	-	7	-	-
PM Peak Hour	1800-1900	1800-1900	1800-1900	1700-1800
One-way flow at PM peak hour	2780	2840	2940	2570
T - % (PM)	-	4.6	-	-
Prop.of commercial vehicles - 16 hr.	-	6.1	-	-
<b>WEST BOUND</b>				
A.A.D.T.	7820	7850	8170	7530
R 12 / 24 - %	69	69.8	67	67
R 16 / 24 - %	88.6	89.6	86.8	85.9
AM Peak Hour	0800-0900	0700-0800	0900-1000	0900-1000
One-way flow at AM peak hour	430	530	420	390
T - % (AM)	-	19.6	-	-
PM Peak Hour	1800-1900	1800-1900	1600-1700	1800-1900
One-way flow at PM peak hour	530	540	530	480
T - % (PM)	-	3.8	-	-
Prop.of commercial vehicles - 16 hr.	-	7.4	-	-

## 3. OTHER INFORMATION AND COMMENT

**4. Vehicle classification and occupancy - Monday to Friday**

Time		Class of vehicle									
		Motor	Private	Taxi	Private	PLB	Goods veh.		Non	Fr. Bus	
		Cycle	Car		LB		Light	M & H	Fr. Bus	SD	DD
0700-0800	Pro	3.7	21.0	38.8	4.8	7.3	11.0	1.3	8.8	0.5	2.8
	Ocp	1.1	1.6	2.1	9.5	13.2	1.6	1.4	18.2	14.2	30.5
0800-0900	Pro	1.9	45.3	26.1	1.9	4.1	13.0	1.3	4.5	0.3	1.7
	Ocp	1.0	1.4	2.1	7.4	14.7	1.9	1.6	20.1	16.4	31.3
0900-1000	Pro	1.6	40.2	27.2	0.7	4.4	20.9	1.5	1.1	0.4	2.2
	Ocp	1.2	1.5	2.0	1.8	9.4	1.7	1.5	4.6	8.9	19.0
1000-1100	Pro	3.4	29.7	31.6	1.3	5.0	23.4	1.6	1.6	0.3	2.1
	Ocp	1.0	1.3	1.4	2.3	8.3	1.6	1.1	5.9	8.5	19.8
1100-1200	Pro	2.4	36.0	25.3	3.7	5.6	20.9	1.4	2.4	0.3	1.8
	Ocp	1.1	1.5	2.0	2.2	7.6	1.5	1.6	4.8	11.7	23.7
1200-1300	Pro	1.9	38.8	27.2	2.1	6.1	17.6	1.6	1.5	0.5	2.5
	Ocp	1.2	1.4	2.0	4.4	8.3	1.6	1.5	3.1	8.0	26.1
1300-1400	Pro	3.6	32.5	24.9	4.0	4.9	20.1	2.6	4.8	0.4	2.3
	Ocp	1.1	1.5	2.0	6.1	10.9	1.5	1.4	8.8	11.5	27.3
1400-1500	Pro	2.0	40.6	26.7	2.1	4.2	19.2	1.6	1.2	0.4	2.1
	Ocp	1.1	1.5	2.0	2.8	9.6	1.6	1.3	7.8	10.1	27.1
1500-1600	Pro	2.0	40.3	25.3	3.1	4.1	18.3	1.6	3.1	0.3	1.9
	Ocp	1.1	1.6	2.0	4.3	10.7	1.5	1.6	8.6	13.9	35.2
1600-1700	Pro	3.3	39.3	26.3	2.5	5.2	15.4	1.3	4.2	0.3	2.2
	Ocp	1.1	1.5	2.0	3.7	10.9	1.5	1.5	2.6	16.9	42.3
1700-1800	Pro	5.1	41.3	27.0	2.8	3.5	14.3	1.5	2.1	0.3	2.2
	Ocp	1.1	1.5	2.0	3.9	13.1	1.4	1.3	3.4	12.7	41.5
1800-1900 Peak hour	Pro	4.3	45.6	27.9	0.7	4.8	12.3	0.3	1.9	0.2	1.9
	Ocp	1.1	1.6	2.2	2.5	15.4	1.6	2.3	1.8	13.6	59.6
1900-2000	Pro	4.6	48.0	29.7	0.4	3.6	9.2	0.8	1.3	0.3	2.1
	Ocp	1.1	1.7	2.5	2.0	14.9	1.7	1.6	1.6	14.0	49.0
2000-2100	Pro	1.8	48.7	32.7	0.5	4.8	8.3	0.3	0.5	0.3	2.1
	Ocp	1.3	1.6	2.1	1.3	13.5	1.7	1.0	17.0	7.7	38.9
2100-2200	Pro	3.2	44.9	36.9	0.3	4.8	5.7	0.3	0.8	0.4	2.6
	Ocp	1.2	1.7	2.2	4.0	11.9	1.8	2.0	1.2	6.6	41.8
2200-2300	Pro	3.1	47.3	37.1	0.5	4.1	3.6	0.0	0.9	0.5	2.8
	Ocp	1.1	1.7	2.2	3.7	10.5	1.3	0.0	2.2	4.1	40.1
16 hours	Pro	3.0	40.3	29.0	1.9	4.7	14.8	1.2	2.6	0.4	2.2
	Ocp	1.1	1.5	2.1	4.7	11.5	1.6	1.5	9.6	11.1	35.1

**Legend**

**Pro.** Proportion of vehicles in % (Sum may not add up to 100% due to figure rounding)  
**Ocp.** Average occupancy of vehicles  
**M&H** Medium and Heavy