

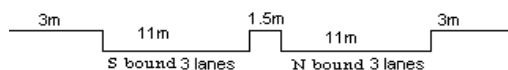
YEAR 2012

COVERAGE (B) STATION 4205

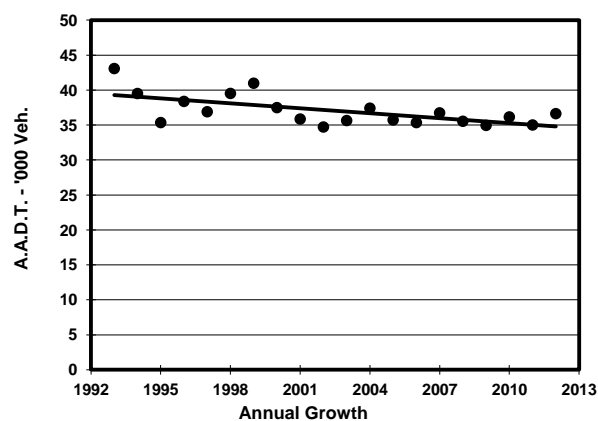
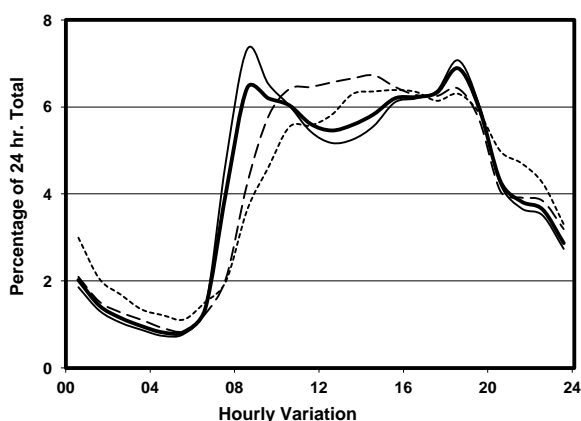
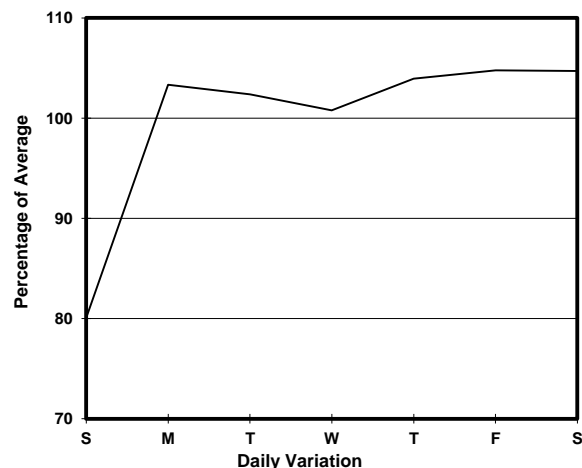
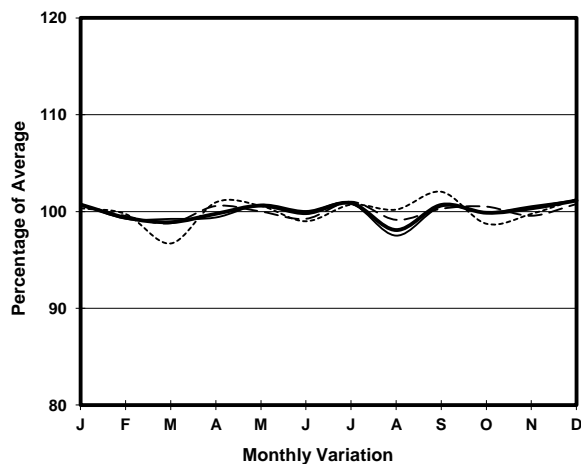
ROAD NETWORK MAJOR

ROAD TYPE PRIMARY DISTRIBUTOR

LINK WATERLOO RD (from YIM PO FONG ST to PUI CHING RD)



1. TRAFFIC FLOW VARIATION AND GROWTH



2. TRAFFIC CHARACTERISTICS (BY DIRECTION)

Parameter	All - Day	Mon. - Fri.	Sat.	Sun.
SOUTH BOUND				
A.A.D.T.	15060	16000	15600	10970
R 12 / 24 - %	76.6	77.7	75.8	69.6
R 16 / 24 - %	92	92.7	91.1	88.2
AM Peak Hour	0800-0900	0800-0900	0900-1000	0900-1000
One-way flow at AM peak hour	1150	1390	1020	560
T - % (AM)	-	7.6	-	-
PM Peak Hour	1800-1900	1800-1900	1700-1800	1700-1800
One-way flow at PM peak hour	1090	1200	1080	720
T - % (PM)	-	4.6	-	-
Prop.of commercial vehicles - 16 hr.	-	7.4	-	-
NORTH BOUND				
A.A.D.T.	21570	22150	23150	18710
R 12 / 24 - %	66.8	67.6	66.6	62.3
R 16 / 24 - %	86.2	86.9	85.6	82.8
AM Peak Hour	0800-0900	0800-0900	0900-1000	0900-1000
One-way flow at AM peak hour	1210	1410	1220	810
T - % (AM)	-	7.6	-	-
PM Peak Hour	1800-1900	1800-1900	1800-1900	1600-1700
One-way flow at PM peak hour	1440	1500	1480	1230
T - % (PM)	-	7.3	-	-
Prop.of commercial vehicles - 16 hr.	-	5.7	-	-

3. OTHER INFORMATION AND COMMENT

4. Vehicle classification and occupancy - Monday to Friday

Time		Class of vehicle									
		Motor Cycle	Private Car	Taxi	Private LB	PLB	Goods veh.		Non Fr. Bus	Fr. Bus	
							Light	M & H		SD	DD
0700-0800	Pro	0.7	16.8	53.4	2.6	2.0	9.9	2.3	7.3	0.5	4.5
	Ocp	1.0	1.5	2.3	8.0	9.7	1.6	1.3	9.1	11.0	29.3
0800-0900 Peak hour	Pro	0.7	46.6	33.1	1.1	2.7	8.3	2.4	2.8	0.3	2.1
	Ocp	1.2	1.6	2.1	5.9	15.4	1.6	1.4	11.9	16.6	37.6
0900-1000	Pro	0.8	44.9	33.1	1.3	2.7	11.8	1.1	1.1	0.2	3.0
	Ocp	1.0	1.4	2.0	3.0	11.5	1.6	1.3	4.9	6.6	23.3
1000-1100	Pro	0.9	37.1	38.0	1.0	2.2	15.1	1.9	0.9	0.3	2.6
	Ocp	1.0	1.4	1.9	1.8	8.4	1.5	1.3	1.4	10.7	20.1
1100-1200	Pro	0.7	35.5	36.8	2.0	2.3	17.0	1.4	1.4	0.3	2.4
	Ocp	1.0	1.5	2.0	1.7	7.3	1.5	1.8	12.4	7.3	25.0
1200-1300	Pro	1.2	40.3	32.2	1.9	3.1	14.5	1.5	2.1	0.3	3.0
	Ocp	1.2	1.6	1.9	3.2	5.6	1.7	1.4	14.2	10.4	23.3
1300-1400	Pro	0.8	35.9	42.0	1.7	1.7	11.7	1.3	1.1	0.4	3.4
	Ocp	1.0	1.5	1.7	4.0	14.1	1.7	1.5	17.4	12.4	23.5
1400-1500	Pro	0.9	34.3	39.7	2.0	2.2	14.7	0.9	1.9	0.3	3.0
	Ocp	1.0	1.5	1.6	2.6	9.4	1.7	1.6	7.9	8.9	26.9
1500-1600	Pro	0.9	38.5	35.0	1.2	2.3	13.2	2.8	3.0	0.4	2.8
	Ocp	1.0	1.5	2.1	1.4	11.1	1.6	1.6	9.1	13.3	26.3
1600-1700	Pro	1.2	43.5	31.9	1.4	2.4	12.5	0.7	3.1	0.3	3.0
	Ocp	1.0	1.6	2.0	3.5	10.4	1.7	1.8	6.9	11.6	29.0
1700-1800	Pro	1.8	45.7	31.8	1.8	3.6	9.0	0.4	2.0	0.3	3.5
	Ocp	1.0	1.4	2.1	2.5	11.6	1.6	3.0	5.3	15.7	32.1
1800-1900	Pro	1.3	46.7	37.7	0.3	3.4	4.6	0.3	2.4	0.4	2.8
	Ocp	1.1	1.4	2.2	1.5	15.7	1.9	1.5	13.6	16.4	43.8
1900-2000	Pro	2.2	52.9	34.4	0.2	4.3	2.5	0.0	1.0	0.2	2.3
	Ocp	1.2	1.6	2.1	2.0	14.9	1.4	0.0	5.0	14.0	34.9
2000-2100	Pro	1.7	44.1	40.7	0.2	3.9	4.2	0.2	1.2	0.2	3.3
	Ocp	1.1	1.6	1.9	2.0	14.1	1.2	1.0	6.6	9.5	33.0
2100-2200	Pro	1.6	37.8	48.5	0.0	2.7	3.5	0.0	1.3	0.5	4.2
	Ocp	1.0	1.8	2.1	0.0	14.9	1.7	0.0	10.2	6.9	32.1
2200-2300	Pro	2.9	36.8	48.6	0.3	4.2	1.0	0.0	0.3	0.6	5.4
	Ocp	1.0	1.8	2.0	2.0	12.2	1.0	0.0	1.0	5.7	27.8
16 hours	Pro	1.2	41.0	37.4	1.2	2.9	9.9	1.1	2.0	0.3	3.1
	Ocp	1.1	1.5	2.0	3.3	12.0	1.6	1.5	9.4	11.4	29.4

Legend

- Pro.** Proportion of vehicles in % (Sum may not add up to 100% due to figure rounding)
- Ocp.** Average occupancy of vehicles
- M&H** Medium and Heavy