

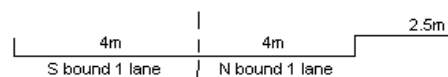
YEAR 2012

COVERAGE (B) STATION 4207

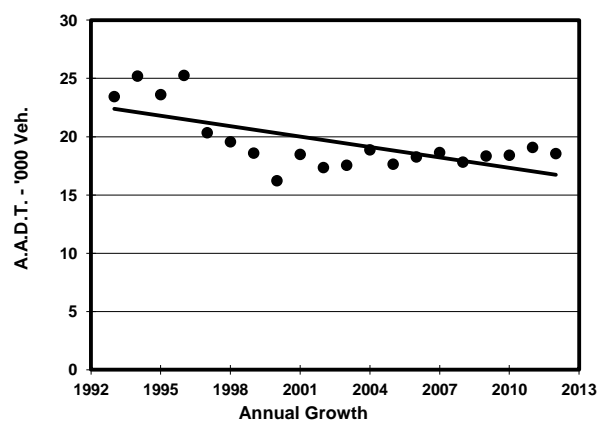
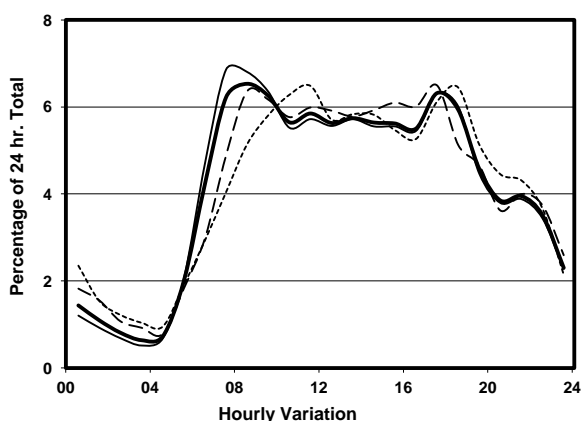
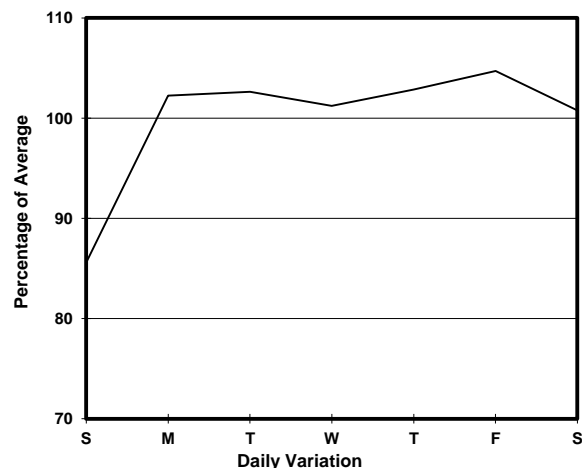
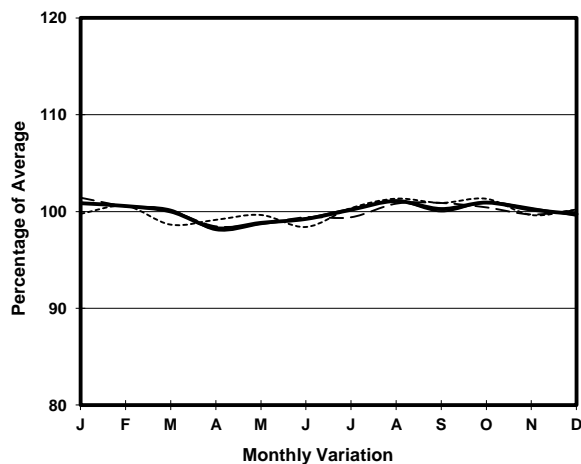
ROAD NETWORK MAJOR

ROAD TYPE DISTRICT DISTRIBUTOR

LINK CHEONG WAN RD & GILLIES AVE S (from RAILWAY TERMINUS to WUHU ST)



## 1. TRAFFIC FLOW VARIATION AND GROWTH



## 2. TRAFFIC CHARACTERISTICS (BY DIRECTION)

Parameter	All - Day	Mon. - Fri.	Sat.	Sun.
<b>SOUTH BOUND</b>				
A.A.D.T.	8490	8950	8750	6420
R 12 / 24 - %	73.3	74.1	73.4	67.7
R 16 / 24 - %	88.5	88.8	87.9	86.5
AM Peak Hour	0800-0900	0700-0800	0800-0900	0900-1000
One-way flow at AM peak hour	510	590	480	320
T - % (AM)	-	13.7	-	-
PM Peak Hour	1700-1800	1700-1800	1700-1800	1800-1900
One-way flow at PM peak hour	590	620	660	410
T - % (PM)	-	12.3	-	-
Prop.of commercial vehicles - 16 hr.	-	11.1	-	-
<b>NORTH BOUND</b>				
A.A.D.T.	10060	10260	10100	9570
R 12 / 24 - %	68.9	69.1	67.9	68.9
R 16 / 24 - %	85.4	85.3	85.2	85.6
AM Peak Hour	0800-0900	0800-0900	0800-0900	0900-1000
One-way flow at AM peak hour	700	740	720	610
T - % (AM)	-	8.8	-	-
PM Peak Hour	1700-1800	1700-1800	1700-1800	1800-1900
One-way flow at PM peak hour	580	600	560	620
T - % (PM)	-	5.3	-	-
Prop.of commercial vehicles - 16 hr.	-	5.1	-	-

## 3. OTHER INFORMATION AND COMMENT

**4. Vehicle classification and occupancy - Monday to Friday**

Time		Class of vehicle									
		Motor Cycle	Private Car	Taxi	Private LB	PLB	Goods veh.		Non Fr. Bus	Fr. Bus	
							Light	M & H		SD	DD
0700-0800 Peak hour	Pro	1.7	5.6	60.4	0.9	16.0	6.9	1.3	2.2	0.4	4.6
	Ocp	1.0	1.8	2.0	13.5	15.1	1.3	1.0	6.6	12.8	21.0
0800-0900	Pro	1.2	16.2	52.6	3.3	12.9	3.3	0.6	6.0	0.4	3.5
	Ocp	1.3	1.3	1.9	5.1	16.8	1.5	1.5	12.4	27.4	24.3
0900-1000	Pro	0.9	18.3	49.3	0.3	13.9	8.2	0.6	3.8	0.4	4.3
	Ocp	1.0	1.5	1.9	1.0	16.5	1.4	1.5	5.1	11.8	17.1
1000-1100	Pro	0.3	16.6	51.3	1.0	11.8	11.8	2.4	0.7	0.3	3.6
	Ocp	1.0	1.3	1.7	1.7	14.6	1.6	1.3	1.0	7.3	11.3
1100-1200	Pro	1.4	14.9	49.5	0.4	13.1	14.9	0.7	1.8	0.4	3.1
	Ocp	1.0	1.5	1.9	3.0	12.5	1.5	1.5	1.8	11.8	16.1
1200-1300	Pro	1.8	10.9	59.2	0.0	9.1	12.6	1.4	1.4	0.2	3.5
	Ocp	1.0	1.6	1.9	0.0	12.0	1.5	1.5	6.8	17.0	13.5
1300-1400	Pro	1.6	13.5	54.4	2.4	10.3	8.3	2.8	1.6	0.2	4.9
	Ocp	1.0	1.4	1.9	1.5	15.3	1.5	1.9	15.0	8.5	14.4
1400-1500	Pro	2.2	18.8	43.0	1.1	9.8	15.9	1.1	3.6	0.5	4.2
	Ocp	1.0	1.6	2.2	1.7	14.9	1.8	1.7	7.5	8.2	12.0
1500-1600	Pro	0.4	17.8	50.4	1.6	9.3	12.0	1.2	2.7	0.4	4.2
	Ocp	1.0	1.5	2.0	2.0	14.5	1.6	1.3	3.3	6.5	13.1
1600-1700	Pro	0.0	16.8	47.5	1.1	11.5	14.5	1.1	2.7	0.5	4.2
	Ocp	0.0	1.3	2.0	3.7	15.4	1.5	1.7	5.4	17.4	13.3
1700-1800	Pro	2.5	17.7	43.4	0.8	13.5	13.1	0.8	2.5	0.6	5.0
	Ocp	1.2	1.3	2.3	2.0	15.4	1.8	2.0	7.8	15.3	16.8
1800-1900	Pro	3.4	22.4	45.2	0.4	13.4	8.2	0.4	2.6	0.1	3.9
	Ocp	1.0	1.7	2.1	1.0	16.8	1.5	1.0	1.1	1.0	42.4
1900-2000	Pro	1.2	24.8	50.2	0.6	11.5	5.3	0.6	2.5	0.1	3.2
	Ocp	1.0	1.7	2.4	3.0	16.1	1.5	1.5	4.8	1.0	23.7
2000-2100	Pro	2.9	25.2	51.0	0.0	11.7	2.9	0.0	1.9	0.1	4.2
	Ocp	1.2	1.6	2.2	0.0	13.9	1.8	0.0	9.8	1.0	13.5
2100-2200	Pro	1.7	18.1	57.8	0.6	13.6	1.1	0.0	1.7	0.0	5.4
	Ocp	1.0	1.9	2.0	2.0	14.8	1.5	0.0	1.7	0.0	10.5
2200-2300	Pro	3.2	15.5	57.7	0.0	13.9	2.1	0.0	1.1	0.3	6.3
	Ocp	1.2	2.0	1.7	0.0	14.2	1.5	0.0	1.0	8.5	6.4
16 hours	Pro	1.6	17.1	51.1	1.0	12.1	9.1	1.0	2.5	0.3	4.1
	Ocp	1.1	1.5	2.0	3.5	15.1	1.6	1.5	6.7	12.6	16.8

**Legend**

- Pro.** Proportion of vehicles in % (Sum may not add up to 100% due to figure rounding)
- Ocp.** Average occupancy of vehicles
- M&H** Medium and Heavy