

YEAR

2012

LINK CHATHAM RD N (from WUHU ST to HONG CHONG RD)

COVERAGE (B) STATION

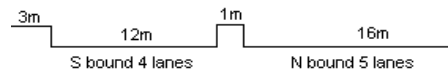
4208

ROAD NETWORK

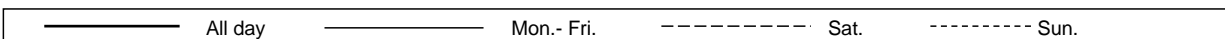
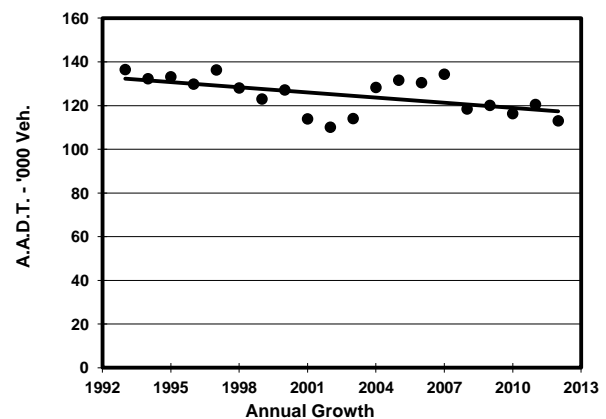
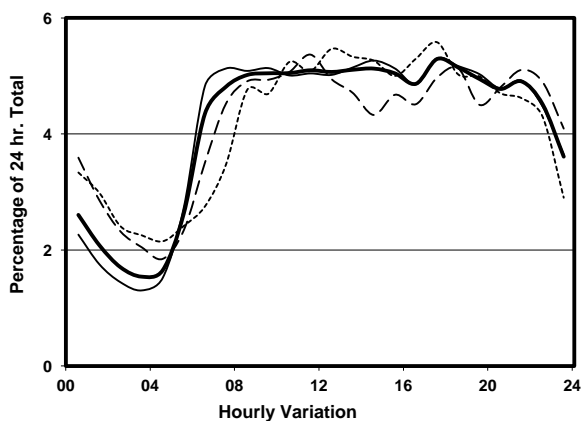
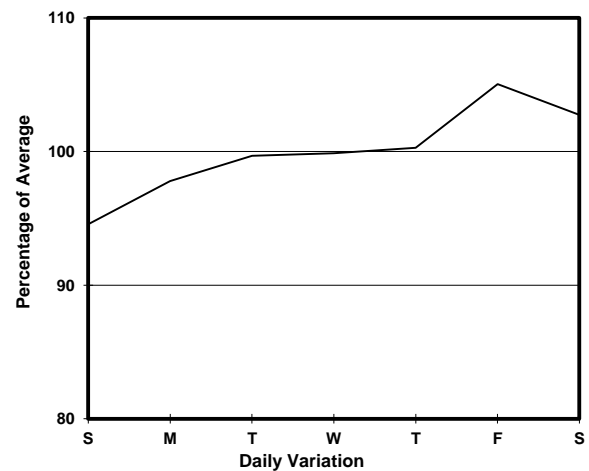
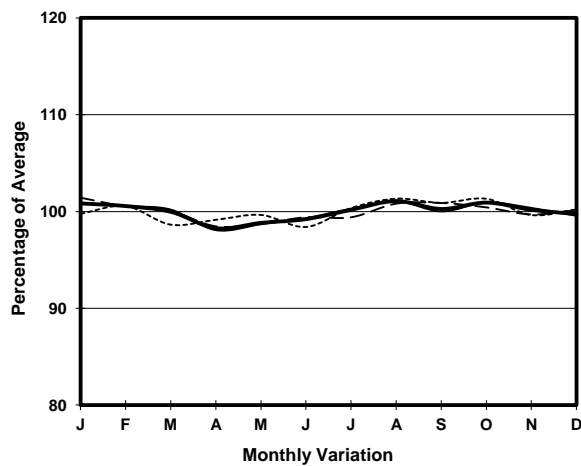
MAJOR

ROAD TYPE

PRIMARY DISTRIBUTOR



## 1. TRAFFIC FLOW VARIATION AND GROWTH



## 2. TRAFFIC CHARACTERISTICS (BY DIRECTION)

Parameter	All - Day	Mon. - Fri.	Sat.	Sun.
<b>SOUTH BOUND</b>				
A.A.D.T.	46720	46180	47980	49030
R 12 / 24 - %	56.5	56.5	53.5	59.2
R 16 / 24 - %	76	76.5	73	77
AM Peak Hour	0700-0800	0700-0800	0800-0900	0800-0900
One-way flow at AM peak hour	2440	2530	2590	2450
T - % (AM)	-	20	-	-
PM Peak Hour	1800-1900	1800-1900	1800-1900	1700-1800
One-way flow at PM peak hour	2160	2060	2410	2670
T - % (PM)	-	9.7	-	-
Prop.of commercial vehicles - 16 hr.	-	11.5	-	-
<b>NORTH BOUND</b>				
A.A.D.T.	66280	67760	68490	58070
R 12 / 24 - %	63.7	64.6	61.3	61.1
R 16 / 24 - %	82.5	83.3	80.5	80.3
AM Peak Hour	0800-0900	0800-0900	0900-1000	0800-0900
One-way flow at AM peak hour	3350	3550	3280	2650
T - % (AM)	-	15.5	-	-
PM Peak Hour	1700-1800	1700-1800	1700-1800	1700-1800
One-way flow at PM peak hour	3940	4080	3990	3300
T - % (PM)	-	20.9	-	-
Prop.of commercial vehicles - 16 hr.	-	15	-	-

## 3. OTHER INFORMATION AND COMMENT

**4. Vehicle classification and occupancy - Monday to Friday**

Time		Class of vehicle									
		Motor	Private	Taxi	Private	PLB	Goods veh.		Non	Fr. Bus	
		Cycle	Car		LB		Light	M & H	Fr. Bus	SD	DD
0700-0800	Pro	5.1	23.5	27.1	1.7	4.8	15.6	5.6	8.8	0.0	7.8
	Ocp	1.1	1.4	1.9	9.0	13.1	1.5	1.2	13.1	0.0	42.8
0800-0900	Pro	5.4	37.6	22.8	1.2	4.2	14.1	3.9	4.0	0.0	6.8
	Ocp	1.1	1.4	2.1	3.4	13.7	1.6	1.2	19.4	0.0	50.7
0900-1000	Pro	2.5	31.5	27.7	1.2	3.0	19.7	4.9	3.3	0.0	6.2
	Ocp	1.1	1.3	1.9	2.5	11.3	1.6	1.5	11.9	0.0	27.9
1000-1100	Pro	2.9	26.2	27.0	1.0	2.8	26.5	5.3	2.1	0.0	6.3
	Ocp	1.0	1.4	1.8	1.8	10.2	1.5	1.5	8.4	0.0	24.0
1100-1200	Pro	3.4	28.1	28.3	1.4	2.6	25.5	3.9	1.6	0.0	5.3
	Ocp	1.0	1.4	2.0	2.0	9.8	1.7	1.4	7.0	0.0	28.4
1200-1300	Pro	3.6	29.3	27.9	1.1	2.7	22.5	4.8	3.1	0.0	5.0
	Ocp	1.2	1.5	2.1	5.2	9.0	1.6	1.5	12.1	0.0	26.3
1300-1400	Pro	3.0	25.2	26.1	1.8	1.7	28.2	5.4	3.2	0.0	5.6
	Ocp	1.1	1.4	2.0	2.1	12.3	1.6	1.3	13.9	0.0	28.5
1400-1500	Pro	4.0	29.2	23.8	1.0	1.9	26.9	4.9	3.2	0.1	5.0
	Ocp	1.1	1.5	2.2	1.9	10.8	1.6	1.3	8.9	1.0	30.8
1500-1600	Pro	3.4	29.5	23.8	1.7	1.8	26.4	4.5	3.8	0.1	5.2
	Ocp	1.1	1.5	2.1	5.8	11.4	1.6	1.4	21.3	1.0	28.9
1600-1700	Pro	4.4	33.1	24.6	1.6	2.3	22.1	3.4	3.1	0.0	5.5
	Ocp	1.0	1.5	2.0	3.6	11.2	1.6	1.3	6.4	0.0	33.0
1700-1800 Peak hour	Pro	5.0	34.1	23.0	0.7	2.7	21.3	2.5	3.5	0.0	7.3
	Ocp	1.0	1.5	2.2	1.4	11.8	1.5	1.3	13.3	0.0	40.4
1800-1900	Pro	7.4	43.2	23.6	0.6	3.3	11.9	1.2	3.4	0.0	5.5
	Ocp	1.1	1.5	2.4	2.9	15.0	1.7	1.4	23.0	0.0	58.7
1900-2000	Pro	3.0	41.8	30.3	0.2	4.1	10.6	1.3	3.7	0.0	5.2
	Ocp	1.2	1.7	2.3	3.3	15.0	1.6	1.3	20.8	0.0	48.2
2000-2100	Pro	3.1	36.9	36.9	0.2	4.2	7.5	1.7	4.0	0.1	5.6
	Ocp	1.2	1.5	2.2	3.0	13.2	1.8	1.4	14.5	9.0	29.7
2100-2200	Pro	2.7	35.3	38.4	0.5	3.7	8.9	1.0	3.5	0.1	6.0
	Ocp	1.1	1.6	2.2	2.6	13.2	1.8	1.6	7.1	3.0	31.1
2200-2300	Pro	3.7	38.5	37.6	0.4	4.1	6.0	1.5	2.3	0.0	5.9
	Ocp	1.1	1.6	2.3	1.5	11.1	1.7	1.2	3.5	0.0	31.1
16 hours	Pro	3.9	32.9	28.0	1.0	3.1	18.3	3.5	3.5	0.1	5.8
	Ocp	1.1	1.5	2.1	3.6	12.3	1.6	1.4	13.7	3.5	35.4

**Legend**

- Pro.** Proportion of vehicles in % (Sum may not add up to 100% due to figure rounding)
- Ocp.** Average occupancy of vehicles
- M&H** Medium and Heavy