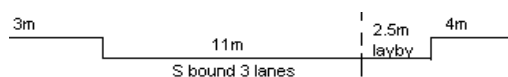
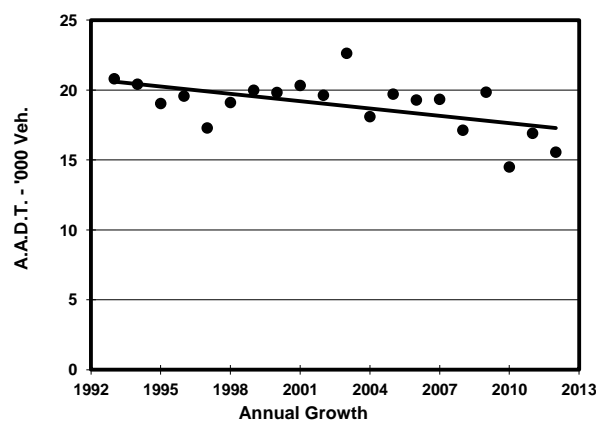
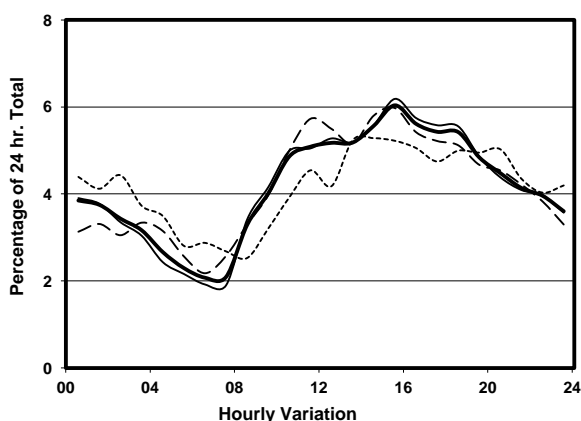
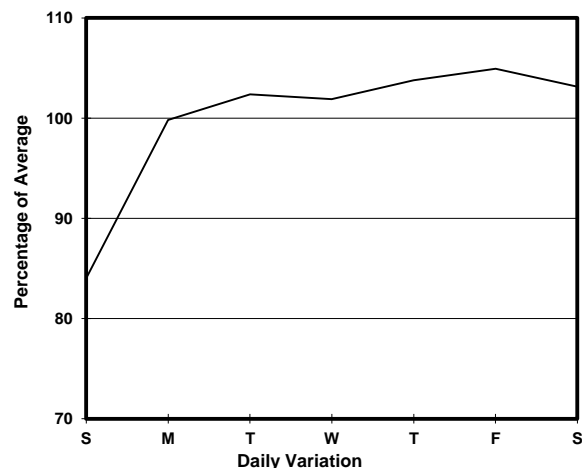
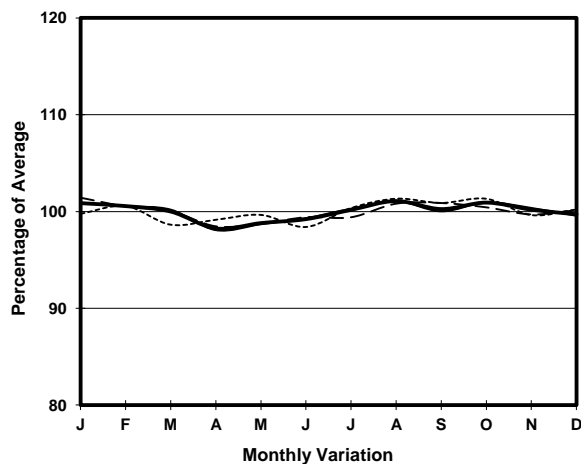


YEAR 2012 LINK SHANGHAI ST (from DUNDAS ST to ARGYLE ST)

COVERAGE (B) STATION 4209  
ROAD NETWORK MAJOR  
ROAD TYPE DISTRICT DISTRIBUTOR



## 1. TRAFFIC FLOW VARIATION AND GROWTH



## 2. TRAFFIC CHARACTERISTICS (BY DIRECTION)

Parameter	All - Day	Mon. - Fri.	Sat.	Sun.
<b>SOUTH BOUND</b>				
A.A.D.T.	15560	16090	16190	13180
R 12 / 24 - %	57.8	58.6	58.7	51.6
R 16 / 24 - %	75.2	75.9	76	70
AM Peak Hour	0900-1000	0900-1000	0900-1000	0900-1000
One-way flow at AM peak hour	620	670	640	420
T - % (AM)	-	7.6	-	-
PM Peak Hour	1600-1700	1600-1700	1600-1700	1600-1700
One-way flow at PM peak hour	870	920	880	670
T - % (PM)	-	3.4	-	-
Prop.of commercial vehicles - 16 hr.	-	5.2	-	-
 A.A.D.T.	-	-	-	-
R 12 / 24 - %	-	-	-	-
R 16 / 24 - %	-	-	-	-
AM Peak Hour	-	-	-	-
One-way flow at AM peak hour	-	-	-	-
T - % (AM)	-	-	-	-
PM Peak Hour	-	-	-	-
One-way flow at PM peak hour	-	-	-	-
T - % (PM)	-	-	-	-
Prop.of commercial vehicles - 16 hr.	-	-	-	-

## 3. OTHER INFORMATION AND COMMENT

**4. Vehicle classification and occupancy - Monday to Friday**

Time		Class of vehicle									
		Motor	Private	Taxi	Private	PLB	Goods veh.		Non	Fr. Bus	
		Cycle	Car		LB		Light	M & H	Fr. Bus	SD	DD
0700-0800	Pro	1.6	7.9	25.3	0.0	17.4	28.5	6.3	7.9	0.0	5.1
	Ocp	1.0	1.4	2.1	0.0	10.4	1.2	2.3	19.0	0.0	9.4
0800-0900	Pro	0.0	9.4	25.6	0.0	20.0	27.5	2.5	12.5	0.0	2.5
	Ocp	0.0	1.7	1.9	0.0	7.7	1.6	1.8	20.8	0.0	12.0
0900-1000	Pro	2.2	15.1	28.5	0.0	15.6	31.2	3.2	2.2	0.0	2.2
	Ocp	1.0	1.3	1.4	0.0	7.9	1.6	2.3	11.3	0.0	8.6
1000-1100	Pro	2.0	14.8	39.4	0.0	10.8	29.0	2.5	0.5	0.0	1.1
	Ocp	1.0	1.5	1.3	0.0	7.5	1.4	2.0	1.0	0.0	13.0
1100-1200	Pro	2.2	15.2	33.6	0.5	14.6	28.2	1.1	2.7	0.0	1.9
	Ocp	1.0	1.7	1.9	3.0	6.3	1.6	1.5	2.4	0.0	9.0
1200-1300	Pro	2.5	16.9	29.9	1.0	11.5	32.9	2.5	1.5	0.0	1.4
	Ocp	1.0	1.5	1.5	5.5	6.7	1.7	2.0	1.7	0.0	8.8
1300-1400	Pro	0.9	23.6	33.3	0.4	9.8	27.6	1.8	1.3	0.0	1.3
	Ocp	1.5	1.4	1.6	2.0	9.0	1.5	2.0	3.7	0.0	9.6
1400-1500	Pro	1.2	20.7	31.0	0.4	8.7	31.8	4.4	0.8	0.0	1.1
	Ocp	1.0	1.6	1.6	2.0	8.2	1.8	1.9	10.0	0.0	9.0
1500-1600 Peak hour	Pro	2.8	29.0	35.0	0.0	8.4	22.3	1.2	0.4	0.0	1.0
	Ocp	1.1	1.3	1.8	0.0	9.7	1.6	1.7	13.0	0.0	10.9
1600-1700	Pro	3.7	30.4	22.2	1.2	9.4	29.6	0.8	1.2	0.0	1.4
	Ocp	1.1	1.5	1.7	4.0	8.2	1.4	1.0	6.3	0.0	11.1
1700-1800	Pro	3.4	33.7	32.8	0.9	9.8	15.4	0.4	2.1	0.0	1.5
	Ocp	1.0	1.4	1.4	2.5	8.2	1.3	2.0	2.6	0.0	9.3
1800-1900	Pro	3.0	27.3	42.1	0.4	18.2	6.1	0.0	1.7	0.0	1.1
	Ocp	1.0	1.6	1.6	3.0	9.1	1.6	0.0	11.3	0.0	14.4
1900-2000	Pro	3.3	37.0	34.8	0.6	14.9	7.2	0.0	1.1	0.0	1.1
	Ocp	1.0	1.6	1.9	3.0	9.5	1.4	0.0	1.5	0.0	8.6
2000-2100	Pro	3.2	21.8	49.9	0.0	15.9	5.8	0.0	2.1	0.0	1.3
	Ocp	1.0	1.7	1.7	0.0	6.1	1.5	0.0	5.3	0.0	5.0
2100-2200	Pro	1.6	27.8	46.5	0.8	11.4	7.3	0.0	2.4	0.0	2.0
	Ocp	1.0	1.6	1.9	5.0	6.9	2.3	0.0	2.3	0.0	4.1
2200-2300	Pro	4.3	28.4	48.2	0.0	12.1	4.3	0.0	0.7	0.0	2.1
	Ocp	1.2	1.9	2.3	0.0	6.1	1.5	0.0	1.0	0.0	4.0
16 hours	Pro	2.4	23.3	34.7	0.4	12.6	21.4	1.5	2.2	0.0	1.5
	Ocp	1.1	1.5	1.7	3.5	7.9	1.6	1.9	11.0	0.0	9.2

**Legend**

**Pro.** Proportion of vehicles in % (Sum may not add up to 100% due to figure rounding)  
**Ocp.** Average occupancy of vehicles  
**M&H** Medium and Heavy