

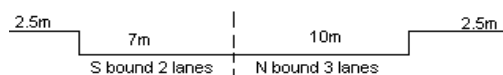
YEAR 2012

COVERAGE (B) STATION 4211

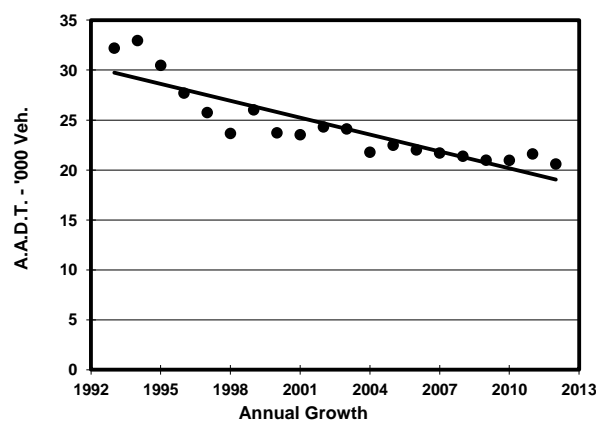
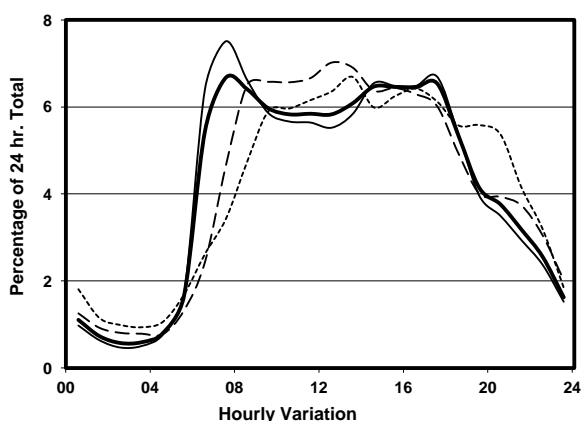
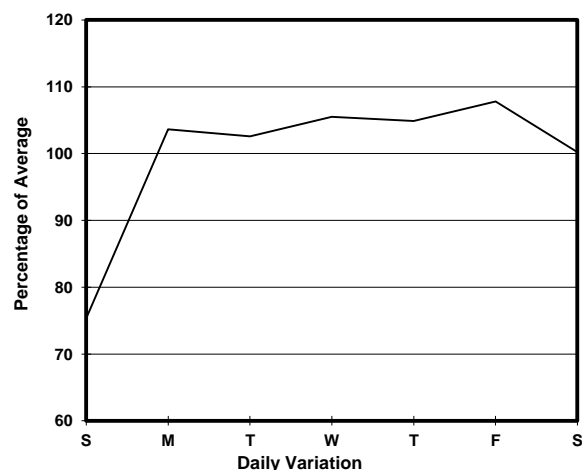
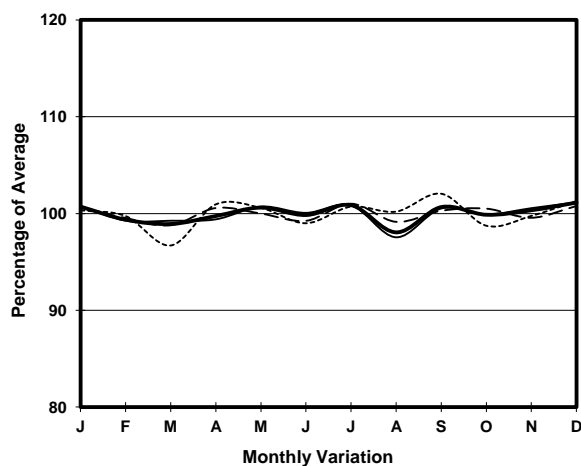
ROAD NETWORK MAJOR

ROAD TYPE DISTRICT DISTRIBUTOR

LINK FAT KWONG ST (from CHUNG HAU ST to YAN FUNG ST)



1. TRAFFIC FLOW VARIATION AND GROWTH



2. TRAFFIC CHARACTERISTICS (BY DIRECTION)

Parameter	All - Day	Mon. - Fri.	Sat.	Sun.
SOUTH BOUND				
A.A.D.T.	11680	12500	11730	8620
R 12 / 24 - %	75.2	75.6	76.1	70.8
R 16 / 24 - %	87.9	87.5	90.1	88.1
AM Peak Hour	0700-0800	0700-0800	0800-0900	0900-1000
One-way flow at AM peak hour	880	1070	850	510
T - % (AM)	-	10.8	-	-
PM Peak Hour	1700-1800	1700-1800	1700-1800	1600-1700
One-way flow at PM peak hour	740	790	690	600
T - % (PM)	-	10.4	-	-
Prop.of commercial vehicles - 16 hr.	-	8.7	-	-
NORTH BOUND				
A.A.D.T.	8920	9400	9180	7130
R 12 / 24 - %	72.2	72.5	73.5	68.1
R 16 / 24 - %	87	86.5	89.1	87.7
AM Peak Hour	0700-0800	0700-0800	0900-1000	0900-1000
One-way flow at AM peak hour	490	570	520	420
T - % (AM)	-	14.2	-	-
PM Peak Hour	1600-1700	1700-1800	1600-1700	1600-1700
One-way flow at PM peak hour	610	670	660	410
T - % (PM)	-	11.9	-	-
Prop.of commercial vehicles - 16 hr.	-	10	-	-

3. OTHER INFORMATION AND COMMENT

4. Vehicle classification and occupancy - Monday to Friday

Time		Class of vehicle									
		Motor Cycle	Private Car	Taxi	Private LB	PLB	Goods veh.		Non Fr. Bus	Fr. Bus	
							Light	M & H		SD	DD
0700-0800 Peak hour	Pro	0.7	13.5	45.6	5.2	14.6	7.9	3.0	5.6	0.0	3.9
	Ocp	1.0	1.4	2.3	5.0	12.6	1.3	1.1	13.9	0.0	34.4
0800-0900	Pro	2.3	45.1	20.4	3.4	8.3	11.7	3.0	3.4	0.0	2.4
	Ocp	1.0	1.4	2.0	4.4	13.5	1.9	1.5	6.5	0.0	28.5
0900-1000	Pro	2.6	36.9	28.3	2.1	7.8	12.2	6.2	1.6	0.0	2.3
	Ocp	1.0	1.4	2.0	4.4	13.8	1.7	1.2	8.0	0.0	17.9
1000-1100	Pro	4.7	31.2	27.7	1.9	6.6	17.3	5.7	2.5	0.0	2.4
	Ocp	1.1	1.4	1.9	2.2	9.6	1.5	1.2	7.8	0.0	14.5
1100-1200	Pro	3.3	31.9	24.0	1.3	9.2	20.4	5.6	2.0	0.0	2.5
	Ocp	1.1	1.4	2.0	1.8	11.3	1.8	1.3	4.5	0.0	14.3
1200-1300	Pro	2.9	33.4	24.0	2.9	12.0	14.6	3.2	4.2	0.0	2.6
	Ocp	1.0	1.5	2.5	6.9	9.6	1.6	1.7	13.7	0.0	12.6
1300-1400	Pro	2.2	24.6	31.5	2.2	6.9	20.2	7.6	2.2	0.0	2.6
	Ocp	1.1	1.8	2.1	3.4	15.0	1.6	1.2	6.7	0.0	12.6
1400-1500	Pro	2.6	33.2	26.6	2.3	5.9	20.1	4.9	1.6	0.0	2.7
	Ocp	1.0	1.6	1.9	4.6	12.1	1.7	1.2	8.0	0.0	12.0
1500-1600	Pro	1.8	35.9	25.8	4.0	5.5	16.0	5.2	2.5	0.2	3.1
	Ocp	1.0	1.6	2.0	5.5	13.2	1.7	1.5	17.1	1.0	12.2
1600-1700	Pro	4.4	33.1	27.0	1.8	7.0	14.9	5.6	3.2	0.0	3.0
	Ocp	1.1	1.5	2.0	4.0	13.5	1.7	1.4	10.5	0.0	14.8
1700-1800	Pro	2.8	36.0	27.4	3.1	7.4	12.3	4.0	3.7	0.2	3.2
	Ocp	1.1	1.5	1.9	3.8	14.8	1.5	1.5	11.2	1.0	17.3
1800-1900	Pro	4.4	38.7	31.8	0.6	13.3	7.5	0.3	1.1	0.0	2.5
	Ocp	1.1	1.5	2.0	5.5	16.3	1.5	1.0	16.5	0.0	28.1
1900-2000	Pro	3.7	38.4	37.8	0.7	10.4	4.7	0.7	1.3	0.0	2.4
	Ocp	1.2	1.4	2.0	3.5	14.2	1.6	2.0	5.3	0.0	22.5
2000-2100	Pro	3.9	40.5	35.7	0.4	10.9	3.5	0.4	1.3	0.0	3.4
	Ocp	1.1	1.7	2.1	1.0	12.6	1.5	3.0	16.0	0.0	16.1
2100-2200	Pro	2.9	34.6	35.1	0.0	12.3	7.6	0.6	1.8	0.0	5.1
	Ocp	1.0	1.5	1.8	0.0	11.7	2.5	1.0	1.3	0.0	10.2
2200-2300	Pro	4.7	26.7	40.9	0.6	15.4	4.1	0.6	1.2	0.0	5.8
	Ocp	1.0	1.8	2.2	2.0	10.5	1.9	1.0	6.0	0.0	9.4
16 hours	Pro	3.1	34.0	29.6	2.2	9.2	12.7	3.8	2.5	0.1	2.9
	Ocp	1.1	1.5	2.0	4.4	12.9	1.7	1.3	10.2	1.0	17.7

Legend

Pro. Proportion of vehicles in % (Sum may not add up to 100% due to figure rounding)
Ocp. Average occupancy of vehicles
M&H Medium and Heavy