

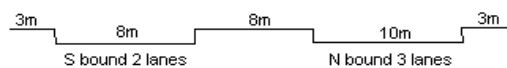
YEAR 2012

COVERAGE (B) STATION 4212

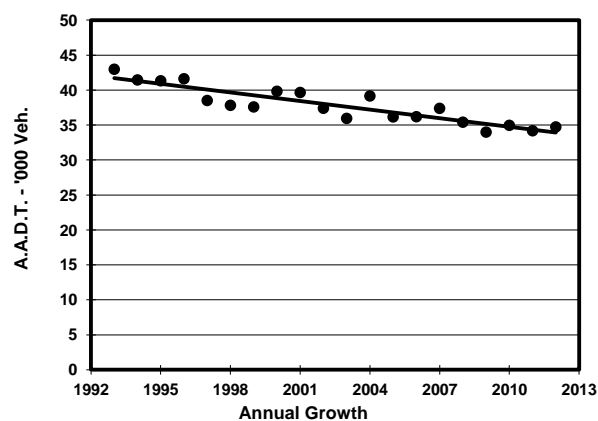
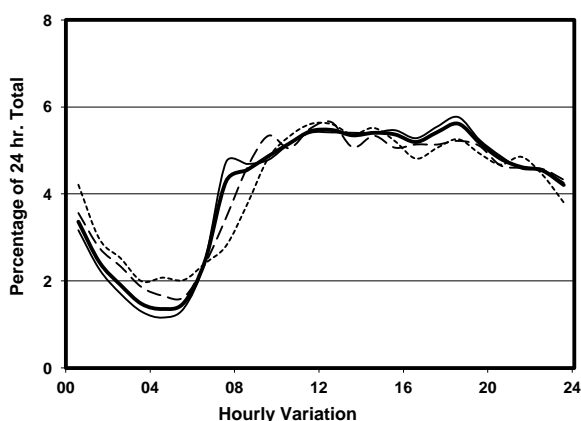
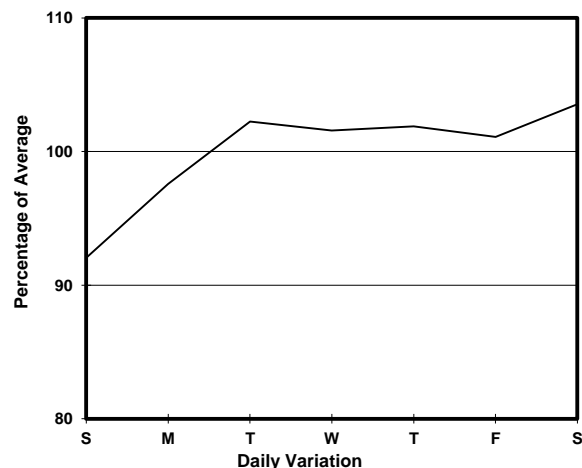
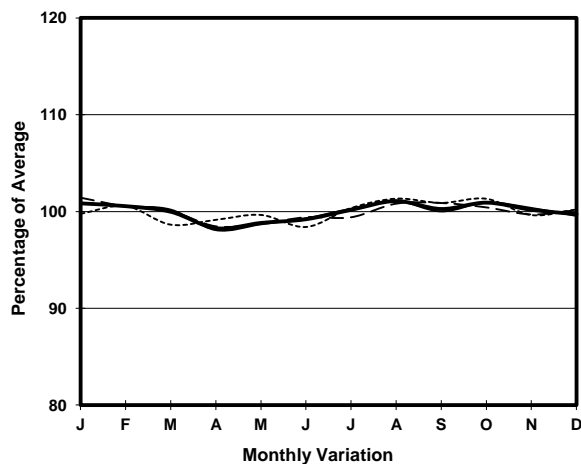
ROAD NETWORK MAJOR

ROAD TYPE PRIMARY DISTRIBUTOR

LINK CHATHAM RD N & MA TAU WAI RD (from SAN LAU ST to CHI KIANG ST)



## 1. TRAFFIC FLOW VARIATION AND GROWTH



## 2. TRAFFIC CHARACTERISTICS (BY DIRECTION)

Parameter	All - Day	Mon. - Fri.	Sat.	Sun.
<b>SOUTH BOUND</b>				
A.A.D.T.	13740	13390	15090	14540
R 12 / 24 - %	57.5	57.7	56.1	58
R 16 / 24 - %	77.5	78.3	75.4	76.3
AM Peak Hour	0700-0800	0700-0800	0900-1000	0900-1000
One-way flow at AM peak hour	640	710	770	740
T - % (AM)	-	18	-	-
PM Peak Hour	1800-1900	1800-1900	1800-1900	1800-1900
One-way flow at PM peak hour	700	700	700	740
T - % (PM)	-	10.5	-	-
Prop.of commercial vehicles - 16 hr.	-	15.2	-	-
<b>NORTH BOUND</b>				
A.A.D.T.	20990	21790	21040	17550
R 12 / 24 - %	65.2	66.3	63.8	60.1
R 16 / 24 - %	83.8	84.7	82.4	79.5
AM Peak Hour	0900-1000	0900-1000	0900-1000	0900-1000
One-way flow at AM peak hour	1120	1180	1160	810
T - % (AM)	-	18.1	-	-
PM Peak Hour	1800-1900	1800-1900	1600-1700	1800-1900
One-way flow at PM peak hour	1250	1330	1200	950
T - % (PM)	-	15.6	-	-
Prop.of commercial vehicles - 16 hr.	-	16.7	-	-

## 3. OTHER INFORMATION AND COMMENT

**4. Vehicle classification and occupancy - Monday to Friday**

Time		Class of vehicle									
		Motor Cycle	Private Car	Taxi	Private LB	PLB	Goods veh.		Non Fr. Bus	Fr. Bus	
							Light	M & H		SD	DD
0700-0800	Pro	4.6	12.9	31.4	1.3	16.0	12.9	4.6	4.4	0.0	11.9
	Ocp	1.1	1.3	2.0	6.4	10.5	1.6	1.2	11.2	0.0	38.9
0800-0900	Pro	7.6	25.4	20.3	0.7	11.3	13.9	3.9	3.0	0.0	13.9
	Ocp	1.0	1.3	1.8	7.0	9.7	1.7	1.5	11.0	0.0	47.2
0900-1000	Pro	3.5	20.7	28.1	1.2	8.1	20.4	4.2	2.6	0.0	11.3
	Ocp	1.0	1.4	1.7	2.6	7.7	1.6	1.2	9.9	0.0	22.8
1000-1100	Pro	3.2	19.6	28.8	0.6	6.5	24.0	4.8	3.2	0.0	9.3
	Ocp	1.0	1.5	1.8	1.0	5.4	1.5	1.3	9.3	0.0	20.5
1100-1200	Pro	2.4	22.2	27.2	1.0	7.1	24.4	5.9	1.2	0.0	8.6
	Ocp	1.0	1.6	1.6	4.4	7.9	1.5	1.3	12.7	0.0	21.5
1200-1300	Pro	2.9	27.7	26.2	1.5	5.1	20.2	5.1	2.0	0.0	9.4
	Ocp	1.1	1.6	2.0	4.3	7.3	1.6	1.4	15.6	0.0	19.1
1300-1400	Pro	2.6	26.4	25.6	1.0	3.6	26.0	5.0	1.4	0.0	8.3
	Ocp	1.1	1.5	1.8	2.6	10.0	1.5	1.4	13.3	0.0	23.3
1400-1500	Pro	4.2	29.3	21.1	0.4	4.7	24.4	4.7	1.6	0.0	9.6
	Ocp	1.1	1.5	1.9	4.0	8.7	1.6	1.5	7.0	0.0	26.0
1500-1600	Pro	1.6	34.1	22.2	1.0	5.2	19.2	5.4	2.2	0.0	9.0
	Ocp	1.3	1.5	1.8	2.4	8.2	1.8	1.4	12.4	0.0	25.3
1600-1700	Pro	2.9	28.6	21.8	1.4	6.8	21.5	3.9	2.7	0.0	10.4
	Ocp	1.2	1.5	1.9	2.5	8.8	1.7	1.4	6.1	0.0	31.7
1700-1800	Pro	4.3	33.6	19.5	1.4	8.6	14.7	3.7	3.1	0.0	11.1
	Ocp	1.0	1.4	2.1	2.9	11.2	1.5	1.4	10.6	0.0	39.2
1800-1900 Peak hour	Pro	4.1	33.6	19.2	0.6	13.7	14.9	2.6	1.6	0.0	9.7
	Ocp	1.1	1.4	2.3	1.0	10.5	1.5	1.4	23.6	0.0	55.5
1900-2000	Pro	3.2	34.8	29.6	0.4	12.3	7.1	0.9	0.9	0.0	10.7
	Ocp	1.1	1.8	2.0	5.5	10.9	1.5	1.8	7.8	0.0	44.6
2000-2100	Pro	2.5	34.8	31.4	0.5	10.4	7.2	1.0	1.0	0.0	11.3
	Ocp	1.1	1.5	2.0	1.0	10.8	1.2	1.3	4.3	0.0	32.4
2100-2200	Pro	3.0	30.0	34.1	1.1	10.6	6.0	0.3	2.7	0.1	12.1
	Ocp	1.3	1.7	1.9	2.5	9.5	1.6	3.0	1.7	5.0	34.3
2200-2300	Pro	1.4	30.2	37.4	0.0	14.9	2.6	0.0	1.4	0.0	12.1
	Ocp	1.4	1.8	2.2	0.0	9.1	1.3	0.0	4.8	0.0	31.9
16 hours	Pro	3.4	27.9	26.1	0.9	8.8	16.7	3.6	2.2	0.1	10.4
	Ocp	1.1	1.5	1.9	3.4	9.5	1.6	1.4	10.3	5.0	32.9

**Legend**

- Pro.** Proportion of vehicles in % (Sum may not add up to 100% due to figure rounding)
- Ocp.** Average occupancy of vehicles
- M&H** Medium and Heavy