

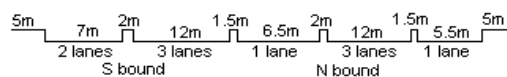
YEAR 2012

COVERAGE (B) STATION 4214

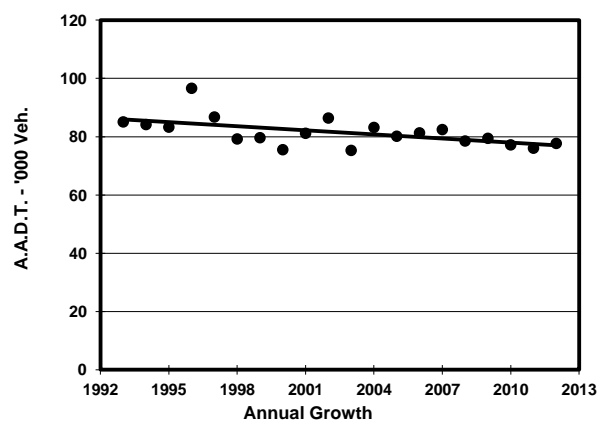
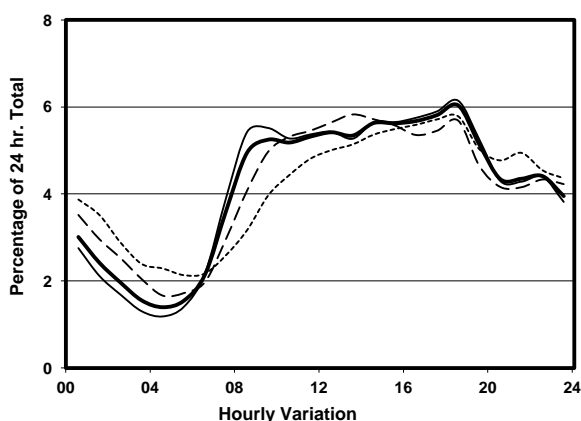
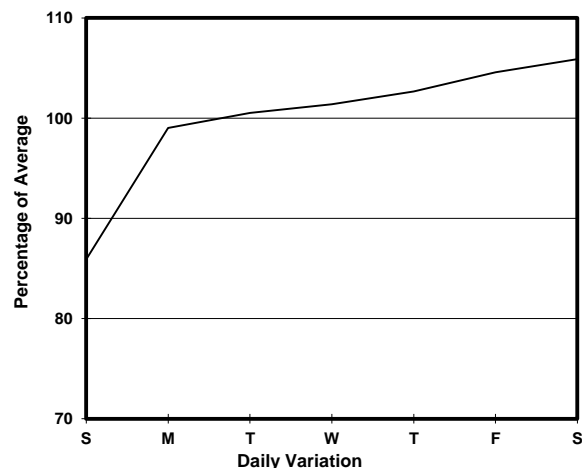
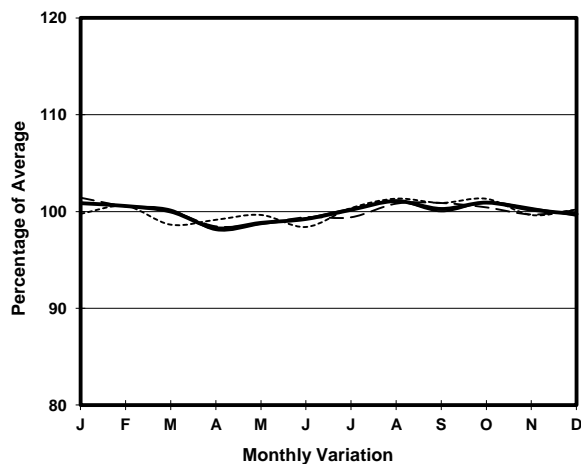
ROAD NETWORK MAJOR

ROAD TYPE PRIMARY DISTRIBUTOR

LINK FERRY ST & FERRY ST <FO> (from WATERLOO RD to SHANTUNG ST)



1. TRAFFIC FLOW VARIATION AND GROWTH



2. TRAFFIC CHARACTERISTICS (BY DIRECTION)

Parameter	All - Day	Mon. - Fri.	Sat.	Sun.
SOUTH BOUND				
A.A.D.T.	41450	42650	44100	35000
R 12 / 24 - %	64.2	65.4	63.1	58.2
R 16 / 24 - %	81.4	82.7	79.4	76.2
AM Peak Hour	0900-1000	0900-1000	0900-1000	0900-1000
One-way flow at AM peak hour	2270	2430	2440	1480
T - % (AM)	-	6.2	-	-
PM Peak Hour	1800-1900	1800-1900	1800-1900	1800-1900
One-way flow at PM peak hour	2470	2570	2450	2120
T - % (PM)	-	2.8	-	-
Prop.of commercial vehicles - 16 hr.	-	5.3	-	-
NORTH BOUND				
A.A.D.T.	36240	36920	38800	32190
R 12 / 24 - %	63.4	65.3	60.9	55.8
R 16 / 24 - %	82.8	84.6	79.3	76.6
AM Peak Hour	0900-1000	0900-1000	0900-1000	0900-1000
One-way flow at AM peak hour	1800	1960	1690	1190
T - % (AM)	-	6.5	-	-
PM Peak Hour	1800-1900	1800-1900	1800-1900	1600-1700
One-way flow at PM peak hour	2210	2320	2260	1950
T - % (PM)	-	4.1	-	-
Prop.of commercial vehicles - 16 hr.	-	5.8	-	-

3. OTHER INFORMATION AND COMMENT

4. Vehicle classification and occupancy - Monday to Friday

Time		Class of vehicle									
		Motor Cycle	Private Car	Taxi	Private LB	PLB	Goods veh.		Non Fr. Bus	Fr. Bus	
							Light	M & H		SD	DD
0700-0800	Pro	7.6	26.4	21.7	1.2	6.3	24.6	6.6	4.5	0.0	1.3
	Ocp	1.1	1.3	1.9	3.8	12.9	1.5	1.3	7.1	0.0	2.4
0800-0900	Pro	7.2	31.6	24.0	1.0	8.8	21.0	3.6	2.4	0.0	0.4
	Ocp	1.0	1.3	2.0	1.6	12.0	1.6	1.5	8.9	0.0	6.3
0900-1000	Pro	5.2	28.7	21.8	0.7	5.6	31.8	4.5	1.3	0.0	0.6
	Ocp	1.1	1.4	1.9	2.3	10.6	1.6	1.5	6.1	0.0	1.0
1000-1100	Pro	3.0	25.9	20.2	1.8	4.4	38.9	4.7	0.8	0.0	0.3
	Ocp	1.1	1.4	1.9	2.2	9.3	1.5	1.4	6.5	0.0	1.0
1100-1200	Pro	4.7	24.9	21.0	1.0	3.4	37.9	5.3	1.5	0.0	0.2
	Ocp	1.0	1.5	2.0	2.5	7.8	1.5	1.6	8.8	0.0	1.0
1200-1300	Pro	4.2	27.8	21.3	0.9	3.1	36.3	4.7	1.5	0.0	0.2
	Ocp	1.1	1.4	1.9	3.7	7.7	1.6	1.4	7.4	0.0	1.0
1300-1400	Pro	3.0	28.5	17.9	1.1	3.6	40.0	4.2	1.7	0.0	0.2
	Ocp	1.0	1.4	2.1	2.5	8.8	1.5	1.4	5.4	0.0	1.0
1400-1500	Pro	5.1	30.4	18.0	1.3	2.9	38.0	3.1	1.0	0.0	0.2
	Ocp	1.1	1.5	2.1	2.1	10.6	1.5	1.4	7.1	0.0	1.0
1500-1600	Pro	4.5	30.8	19.9	0.9	3.0	34.7	4.3	1.5	0.0	0.2
	Ocp	1.1	1.4	1.9	4.3	9.3	1.5	1.5	7.8	0.0	1.0
1600-1700	Pro	4.3	26.6	24.4	1.6	3.1	34.2	3.2	2.2	0.0	0.5
	Ocp	1.2	1.5	2.0	2.9	10.5	1.6	1.3	3.3	0.0	1.0
1700-1800	Pro	6.5	37.4	21.1	0.9	4.7	25.3	2.2	1.5	0.0	0.4
	Ocp	1.0	1.4	1.9	2.4	11.5	1.6	1.5	2.8	0.0	1.0
1800-1900 Peak hour	Pro	6.8	45.4	22.1	0.2	6.4	15.5	1.9	1.1	0.0	0.5
	Ocp	1.1	1.5	2.1	4.5	15.6	1.6	1.4	7.8	0.0	1.0
1900-2000	Pro	3.9	48.4	26.2	0.2	5.4	12.2	1.6	1.6	0.0	0.5
	Ocp	1.1	1.4	2.0	3.0	14.8	1.6	1.3	6.0	0.0	1.0
2000-2100	Pro	4.0	39.3	34.7	0.3	8.4	9.5	1.4	2.0	0.0	0.3
	Ocp	1.1	1.5	2.1	2.3	10.7	1.7	1.6	7.7	0.0	1.0
2100-2200	Pro	2.1	41.0	37.4	0.0	6.6	7.2	3.0	2.0	0.0	0.7
	Ocp	1.1	1.6	2.1	0.0	10.2	1.5	1.3	2.6	0.0	1.0
2200-2300	Pro	3.3	40.0	41.3	0.1	6.9	4.8	1.8	1.3	0.0	0.6
	Ocp	1.1	1.6	2.1	3.0	10.3	1.5	1.4	2.6	0.0	1.0
16 hours	Pro	4.8	33.3	24.1	0.8	5.1	26.4	3.5	1.7	0.0	0.4
	Ocp	1.1	1.4	2.0	2.7	11.2	1.5	1.4	6.2	0.0	1.6

Legend

- Pro.** Proportion of vehicles in % (Sum may not add up to 100% due to figure rounding)
- Ocp.** Average occupancy of vehicles
- M&H** Medium and Heavy