

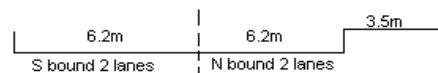
YEAR 2012

COVERAGE (B) STATION 4215

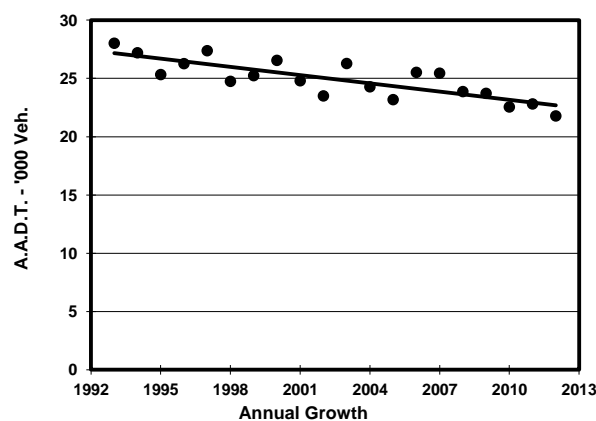
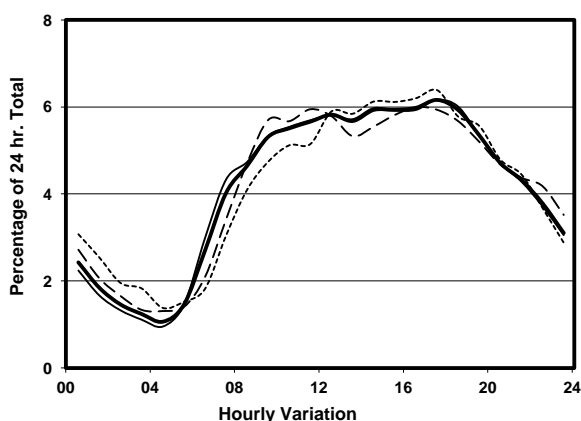
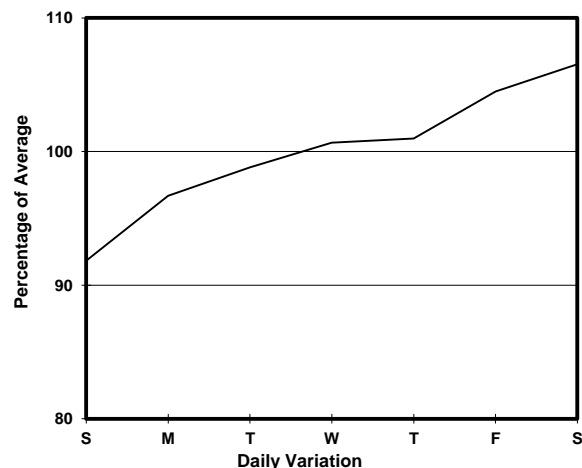
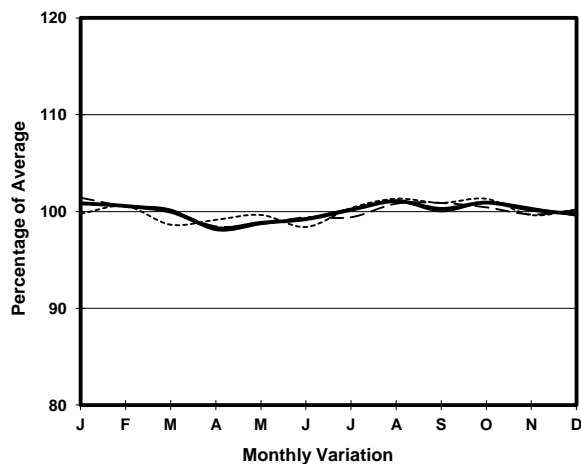
ROAD NETWORK MAJOR

ROAD TYPE DISTRICT DISTRIBUTOR

LINK YIM PO FONG ST (from SHANTUNG ST to WATERLOO RD)



1. TRAFFIC FLOW VARIATION AND GROWTH



2. TRAFFIC CHARACTERISTICS (BY DIRECTION)

Parameter	All - Day	Mon. - Fri.	Sat.	Sun.
SOUTH BOUND				
A.A.D.T.	11110	11220	11760	10240
R 12 / 24 - %	65.7	66.9	62.7	62.6
R 16 / 24 - %	84.2	85.2	81.9	81.4
AM Peak Hour	0900-1000	0900-1000	0900-1000	0900-1000
One-way flow at AM peak hour	610	620	710	490
T - % (AM)	-	0.8	-	-
PM Peak Hour	1700-1800	1700-1800	1700-1800	1700-1800
One-way flow at PM peak hour	670	670	660	660
T - % (PM)	-	2.9	-	-
Prop.of commercial vehicles - 16 hr.	-	3.1	-	-
NORTH BOUND				
A.A.D.T.	10670	10720	11540	9830
R 12 / 24 - %	67.5	67.5	68.3	66.5
R 16 / 24 - %	85.3	85.3	86	84.7
AM Peak Hour	0900-1000	0900-1000	0900-1000	0900-1000
One-way flow at AM peak hour	540	550	620	470
T - % (AM)	-	3.3	-	-
PM Peak Hour	1700-1800	1700-1800	1600-1700	1600-1700
One-way flow at PM peak hour	680	680	750	650
T - % (PM)	-	3	-	-
Prop.of commercial vehicles - 16 hr.	-	3.1	-	-

3. OTHER INFORMATION AND COMMENT

4. Vehicle classification and occupancy - Monday to Friday

Time		Class of vehicle									
		Motor Cycle	Private Car	Taxi	Private LB	PLB	Goods veh.		Non Fr. Bus	Fr. Bus	
							Light	M & H		SD	DD
0700-0800	Pro	0.8	13.9	52.1	0.0	10.6	12.2	4.9	4.1	1.4	0.0
	Ocp	1.0	1.4	1.8	0.0	3.1	1.3	1.7	6.0	7.3	0.0
0800-0900	Pro	1.9	31.4	36.3	0.0	16.9	11.1	1.0	0.0	1.0	0.4
	Ocp	1.3	1.5	1.9	0.0	11.4	1.8	2.0	0.0	9.0	3.0
0900-1000	Pro	1.9	18.7	50.6	0.0	8.6	18.0	1.1	0.4	0.7	0.0
	Ocp	1.0	1.3	1.8	0.0	10.0	1.5	1.7	1.0	8.6	0.0
1000-1100	Pro	2.7	20.9	46.5	0.7	5.0	21.6	1.7	0.7	0.4	0.0
	Ocp	1.1	1.5	1.6	2.0	7.2	1.4	1.8	1.0	6.2	0.0
1100-1200	Pro	2.5	23.5	42.7	0.7	4.9	23.5	1.4	0.4	0.5	0.0
	Ocp	1.0	1.6	1.9	2.0	9.6	1.6	2.0	2.0	8.7	0.0
1200-1300	Pro	2.0	27.7	42.9	1.0	7.3	16.2	2.0	0.7	0.4	0.0
	Ocp	1.2	1.4	2.1	3.7	7.1	1.6	1.5	18.5	8.4	0.0
1300-1400	Pro	5.2	28.2	43.5	0.0	6.5	12.4	2.0	1.6	0.5	0.0
	Ocp	1.1	1.7	2.0	0.0	12.0	1.6	1.2	10.4	8.7	0.0
1400-1500	Pro	4.8	28.7	35.2	1.2	5.7	19.4	2.4	2.0	0.6	0.0
	Ocp	1.0	1.6	2.2	2.3	10.4	1.5	1.8	4.4	12.3	0.0
1500-1600	Pro	4.3	28.4	42.2	1.4	5.3	13.5	2.1	2.1	0.6	0.0
	Ocp	1.0	1.5	2.1	1.5	9.1	1.5	1.5	2.7	12.4	0.0
1600-1700	Pro	5.1	40.6	32.1	1.0	7.8	10.8	0.7	1.4	0.6	0.0
	Ocp	1.1	1.6	2.2	3.7	12.4	1.4	1.5	3.8	11.6	0.0
1700-1800 Peak hour	Pro	5.8	38.0	33.1	0.3	7.0	12.9	1.2	1.2	0.5	0.0
	Ocp	1.2	1.4	2.1	3.0	12.0	1.5	2.0	7.0	13.0	0.0
1800-1900	Pro	6.3	44.0	27.5	0.0	9.7	9.1	0.3	2.7	0.5	0.0
	Ocp	1.1	1.4	2.5	0.0	14.3	1.7	1.0	14.0	17.0	0.0
1900-2000	Pro	3.6	44.5	34.2	0.0	10.6	4.8	0.6	1.2	0.3	0.0
	Ocp	1.2	1.5	2.2	0.0	14.3	2.1	1.0	10.8	8.8	0.0
2000-2100	Pro	4.8	40.0	42.5	0.0	7.1	3.9	0.3	1.0	0.4	0.0
	Ocp	1.2	1.7	2.2	0.0	13.8	1.6	1.0	4.3	6.2	0.0
2100-2200	Pro	2.0	34.5	44.4	0.8	10.3	5.9	0.0	1.6	0.5	0.0
	Ocp	1.0	1.5	2.1	3.5	11.5	1.8	0.0	8.0	9.8	0.0
2200-2300	Pro	6.3	37.7	36.7	0.5	11.0	6.3	0.0	0.5	1.0	0.0
	Ocp	1.1	1.8	2.6	6.0	12.4	1.5	0.0	1.0	5.9	0.0
16 hours	Pro	3.9	32.2	39.6	0.5	8.1	12.6	1.2	1.3	0.6	0.1
	Ocp	1.1	1.5	2.1	2.8	11.2	1.6	1.6	7.5	9.6	3.0

Legend

Pro. Proportion of vehicles in % (Sum may not add up to 100% due to figure rounding)
Ocp. Average occupancy of vehicles
M&H Medium and Heavy