

YEAR 2012

COVERAGE (B) STATION 4217

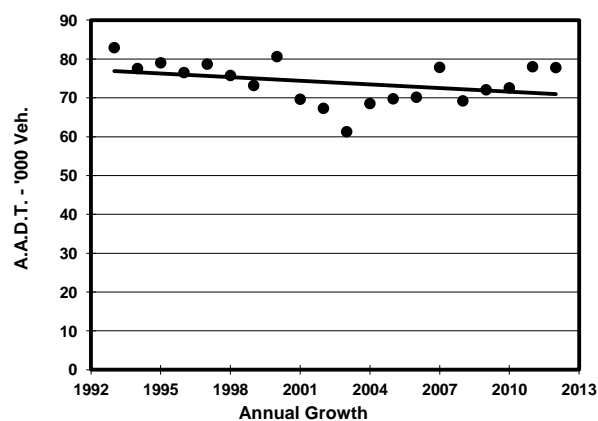
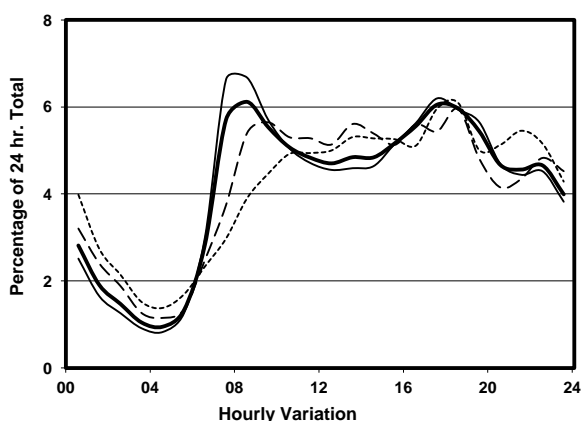
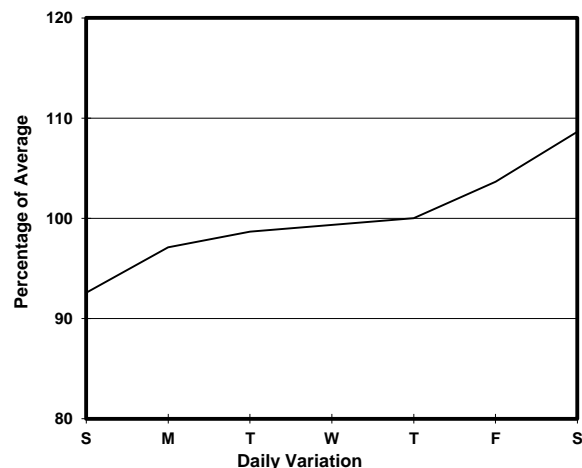
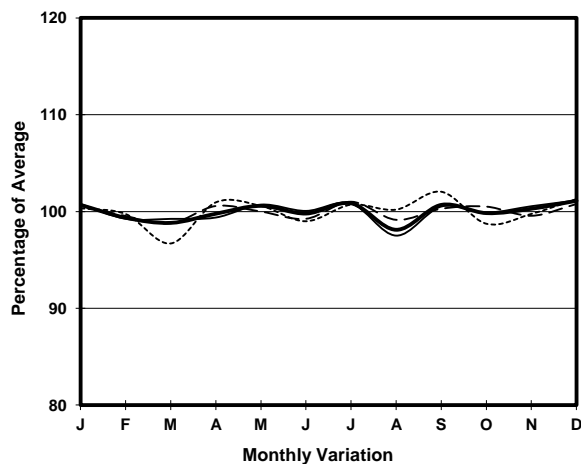
ROAD NETWORK MAJOR

ROAD TYPE PRIMARY DISTRIBUTOR

LINK CLEAR WATER BAY RD (from LUNG CHEUNG RD to
NEW CLEAR WATER BAY RD WESTERN JUNCTION)



1. TRAFFIC FLOW VARIATION AND GROWTH



2. TRAFFIC CHARACTERISTICS (BY DIRECTION)

Parameter	All - Day	Mon. - Fri.	Sat.	Sun.
EAST BOUND				
A.A.D.T.	43000	43000	46710	40420
R 12 / 24 - %	61.5	62.5	61.1	56.7
R 16 / 24 - %	82.8	84	80.7	78.9
AM Peak Hour	0800-0900	0800-0900	0900-1000	0900-1000
One-way flow at AM peak hour	2330	2530	2370	1590
T - % (AM)	-	9.5	-	-
PM Peak Hour	1800-1900	1800-1900	1800-1900	1700-1800
One-way flow at PM peak hour	2750	2810	2880	2410
T - % (PM)	-	5	-	-
Prop.of commercial vehicles - 16 hr.	-	9.8	-	-
WEST BOUND				
A.A.D.T.	34800	34900	38060	31960
R 12 / 24 - %	67.9	69.2	66.8	62.4
R 16 / 24 - %	84.7	85.7	83	81.3
AM Peak Hour	0800-0900	0700-0800	0900-1000	0900-1000
One-way flow at AM peak hour	2430	2680	2420	1640
T - % (AM)	-	10.4	-	-
PM Peak Hour	1700-1800	1700-1800	1700-1800	1800-1900
One-way flow at PM peak hour	2180	2230	2220	2010
T - % (PM)	-	9.4	-	-
Prop.of commercial vehicles - 16 hr.	-	9.6	-	-

3. OTHER INFORMATION AND COMMENT

4. Vehicle classification and occupancy - Monday to Friday

Time		Class of vehicle									
		Motor	Private	Taxi	Private	PLB	Goods veh.		Non	Fr. Bus	
		Cycle	Car		LB		Light	M & H	Fr. Bus	SD	DD
0700-0800	Pro	5.4	34.8	17.2	3.2	16.4	11.9	3.9	3.4	0.1	3.8
	Ocp	1.1	1.5	2.0	5.6	12.8	1.5	1.0	15.2	16.0	45.4
0800-0900 Peak hour	Pro	5.0	47.3	13.5	2.0	12.7	10.8	3.6	2.4	0.1	2.6
	Ocp	1.1	1.4	1.9	6.9	12.6	1.8	1.1	10.2	19.7	43.6
0900-1000	Pro	4.2	39.8	16.8	2.7	11.1	15.4	5.5	1.2	0.1	3.2
	Ocp	1.0	1.4	1.8	2.3	12.6	1.6	1.2	22.5	7.0	24.0
1000-1100	Pro	3.0	33.6	19.9	1.3	10.6	19.8	7.2	1.0	0.1	3.5
	Ocp	1.2	1.3	2.0	2.7	10.5	1.6	1.1	1.9	11.0	23.5
1100-1200	Pro	3.0	32.0	18.2	2.7	11.8	20.9	6.3	1.2	0.1	3.8
	Ocp	1.0	1.4	1.9	2.2	10.8	1.6	1.2	1.3	15.5	21.5
1200-1300	Pro	3.8	36.4	21.5	3.0	10.5	13.2	5.6	2.3	0.1	3.8
	Ocp	1.2	1.5	1.9	4.8	10.2	1.5	1.2	5.6	19.0	20.6
1300-1400	Pro	4.3	35.9	17.4	1.8	10.1	16.4	6.7	3.3	0.1	4.0
	Ocp	1.1	1.5	2.0	2.5	10.5	1.6	1.2	4.3	12.0	18.8
1400-1500	Pro	4.0	34.4	16.1	1.7	9.8	17.6	9.0	2.9	0.1	4.4
	Ocp	1.1	1.5	2.0	1.7	9.3	1.5	1.2	15.5	10.0	18.9
1500-1600	Pro	3.9	34.5	15.6	3.8	8.3	15.7	6.5	7.4	0.1	4.1
	Ocp	1.0	1.4	1.9	4.2	12.3	1.5	1.1	11.8	11.5	24.0
1600-1700	Pro	2.6	32.4	20.3	3.8	11.3	15.9	4.2	5.9	0.1	3.6
	Ocp	1.1	1.6	1.7	4.3	13.5	1.6	1.2	9.8	17.5	27.3
1700-1800	Pro	4.3	36.3	20.0	3.6	11.7	15.2	2.0	3.4	0.1	3.4
	Ocp	1.0	1.5	1.9	3.2	12.4	1.6	1.2	2.1	21.5	35.6
1800-1900	Pro	6.3	47.0	19.2	0.8	11.4	10.2	1.5	0.5	0.1	3.1
	Ocp	1.2	1.4	2.0	1.9	13.1	1.6	1.4	8.8	32.0	41.0
1900-2000	Pro	4.4	47.9	21.8	0.1	13.7	7.2	0.9	0.8	0.1	3.1
	Ocp	1.2	1.5	2.1	1.0	10.3	1.6	1.2	7.1	14.0	32.1
2000-2100	Pro	3.8	45.2	25.3	0.1	14.0	7.3	0.5	0.2	0.0	3.4
	Ocp	1.2	1.7	1.7	1.0	9.5	1.7	1.5	1.0	0.0	18.5
2100-2200	Pro	3.5	39.4	31.0	0.0	15.1	6.5	0.3	0.5	0.1	3.6
	Ocp	1.3	1.6	1.9	0.0	8.9	1.5	1.0	1.0	9.8	20.4
2200-2300	Pro	5.6	40.8	32.9	0.4	12.5	4.1	0.1	0.0	0.1	3.6
	Ocp	1.2	1.5	1.9	2.3	9.1	1.6	1.0	0.0	9.5	19.7
16 hours	Pro	4.3	39.2	19.9	2.0	12.0	12.9	3.9	2.3	0.1	3.5
	Ocp	1.1	1.5	1.9	3.9	11.3	1.6	1.2	9.5	14.4	28.0

Legend

Pro. Proportion of vehicles in % (Sum may not add up to 100% due to figure rounding)
Ocp. Average occupancy of vehicles
M&H Medium and Heavy