

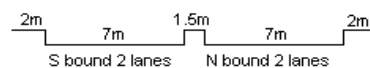
YEAR 2012

COVERAGE (B) STATION 4218

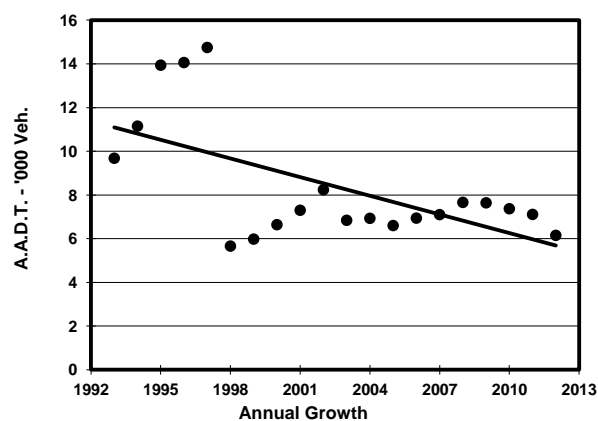
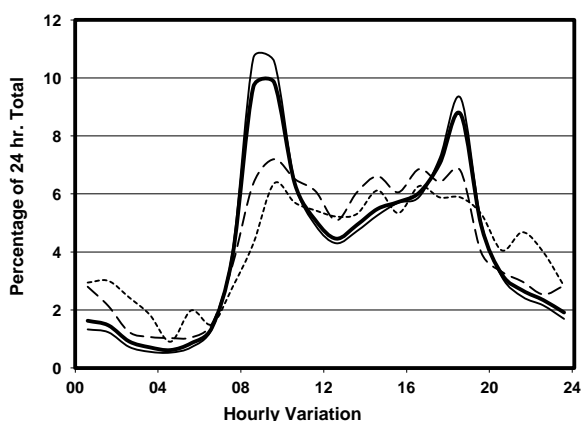
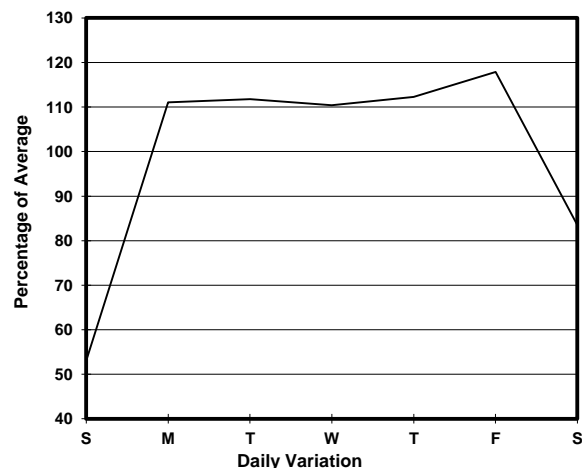
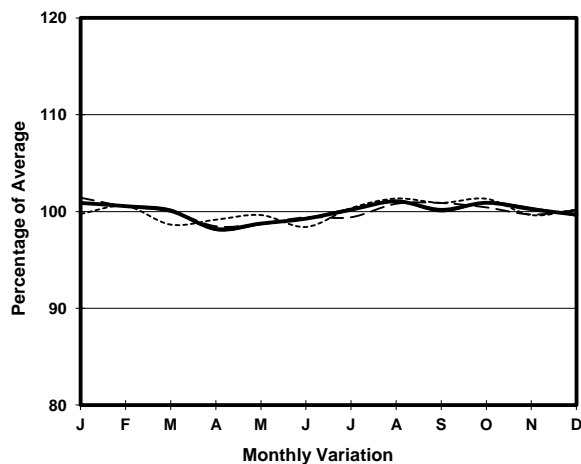
ROAD NETWORK MAJOR

ROAD TYPE DISTRICT DISTRIBUTOR

LINK EASTERN RD & KAI SHING ST (from CONCORDE RD to KAI CHEUNG RD)



1. TRAFFIC FLOW VARIATION AND GROWTH



2. TRAFFIC CHARACTERISTICS (BY DIRECTION)

Parameter	All - Day	Mon. - Fri.	Sat.	Sun.
SOUTH BOUND				
A.A.D.T.	3740	4360	3040	1970
R 12 / 24 - %	77.1	79.2	71.4	62.1
R 16 / 24 - %	90.1	91.5	85.3	81.8
AM Peak Hour	0800-0900	0800-0900	0900-1000	0900-1000
One-way flow at AM peak hour	450	590	240	110
T - % (AM)	-	11.7	-	-
PM Peak Hour	1700-1800	1700-1800	1600-1700	1600-1700
One-way flow at PM peak hour	220	260	190	130
T - % (PM)	-	9.5	-	-
Prop.of commercial vehicles - 16 hr.	-	7.7	-	-
NORTH BOUND				
A.A.D.T.	2410	2760	2240	1380
R 12 / 24 - %	77.8	78.9	76.4	68
R 16 / 24 - %	91.1	92.3	87.8	83.7
AM Peak Hour	0900-1000	0900-1000	0800-0900	0900-1000
One-way flow at AM peak hour	170	200	150	100
T - % (AM)	-	15.4	-	-
PM Peak Hour	1800-1900	1800-1900	1800-1900	1800-1900
One-way flow at PM peak hour	330	420	180	80
T - % (PM)	-	4.6	-	-
Prop.of commercial vehicles - 16 hr.	-	12.1	-	-

3. OTHER INFORMATION AND COMMENT

4. Vehicle classification and occupancy - Monday to Friday

Time		Class of vehicle									
		Motor	Private	Taxi	Private	PLB	Goods veh.		Non	Fr. Bus	
		Cycle	Car		LB		Light	M & H	Fr. Bus	SD	DD
0700-0800	Pro	5.9	9.9	49.3	3.9	0.0	15.8	7.9	5.9	0.0	1.5
	Ocp	1.0	1.2	2.5	7.5	0.0	1.9	1.0	17.7	0.0	38.7
0800-0900 Peak hour	Pro	3.9	35.3	33.6	2.2	0.0	11.0	6.6	7.2	0.1	0.1
	Ocp	1.0	1.2	2.1	5.0	0.0	1.8	1.3	39.8	40.0	64.0
0900-1000	Pro	0.6	38.1	30.0	2.5	0.6	18.1	5.0	4.4	0.2	0.5
	Ocp	1.0	1.3	1.9	1.8	1.0	1.7	1.6	8.4	11.0	23.7
1000-1100	Pro	3.3	45.7	26.7	2.2	0.0	13.4	6.7	1.1	0.0	0.8
	Ocp	1.0	1.4	1.8	1.5	0.0	1.9	1.3	2.0	0.0	11.0
1100-1200	Pro	0.0	42.9	20.8	0.0	0.0	23.5	8.3	4.2	0.3	0.0
	Ocp	0.0	1.8	2.1	0.0	0.0	1.5	1.5	1.3	6.0	0.0
1200-1300	Pro	3.4	45.8	33.9	3.4	0.0	5.1	1.7	6.8	0.0	0.0
	Ocp	2.0	1.3	1.8	1.5	0.0	1.7	1.0	9.3	0.0	0.0
1300-1400	Pro	2.9	30.0	31.4	0.0	0.0	24.3	11.4	0.0	0.0	0.0
	Ocp	1.0	1.8	1.6	0.0	0.0	1.5	1.1	0.0	0.0	0.0
1400-1500	Pro	3.5	35.3	22.4	1.2	0.0	24.7	9.4	3.5	0.0	0.0
	Ocp	1.0	1.5	1.5	3.0	0.0	1.6	1.1	1.0	0.0	0.0
1500-1600	Pro	2.1	33.7	24.2	7.4	0.0	17.9	14.7	0.0	0.0	0.0
	Ocp	1.0	1.5	1.5	6.4	0.0	1.8	1.2	0.0	0.0	0.0
1600-1700	Pro	3.4	36.0	15.7	6.7	0.0	30.3	7.9	0.0	0.0	0.0
	Ocp	1.0	1.5	1.8	4.8	0.0	2.0	1.6	0.0	0.0	0.0
1700-1800	Pro	5.0	31.7	35.6	3.0	0.0	14.9	5.0	4.0	0.2	0.7
	Ocp	1.2	1.4	1.5	2.7	0.0	1.3	1.6	5.3	14.0	16.7
1800-1900	Pro	4.1	45.7	33.4	2.7	0.0	10.9	1.4	1.4	0.2	0.2
	Ocp	1.0	1.8	2.1	1.3	0.0	2.4	1.5	10.5	24.0	45.0
1900-2000	Pro	3.9	48.2	33.7	1.9	1.0	6.7	2.9	1.0	0.2	0.5
	Ocp	1.5	1.7	1.6	5.5	1.0	1.6	1.7	1.0	10.0	20.0
2000-2100	Pro	3.2	52.4	39.7	0.0	0.0	3.2	0.0	0.0	0.4	1.2
	Ocp	1.0	1.6	1.6	0.0	0.0	2.0	0.0	0.0	1.0	12.3
2100-2200	Pro	0.0	25.8	67.7	0.0	0.0	3.2	3.2	0.0	0.0	0.0
	Ocp	0.0	1.6	2.0	0.0	0.0	1.0	1.0	0.0	0.0	0.0
2200-2300	Pro	7.1	28.6	60.7	0.0	0.0	0.0	0.0	3.6	0.0	0.0
	Ocp	1.0	1.6	2.2	0.0	0.0	0.0	0.0	1.0	0.0	0.0
16 hours	Pro	3.2	38.0	31.8	2.6	0.1	14.9	6.0	2.9	0.1	0.3
	Ocp	1.1	1.5	1.9	4.0	1.0	1.7	1.3	17.1	15.1	24.0

Legend

Pro. Proportion of vehicles in % (Sum may not add up to 100% due to figure rounding)
Ocp. Average occupancy of vehicles
M&H Medium and Heavy