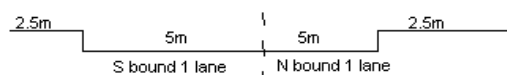
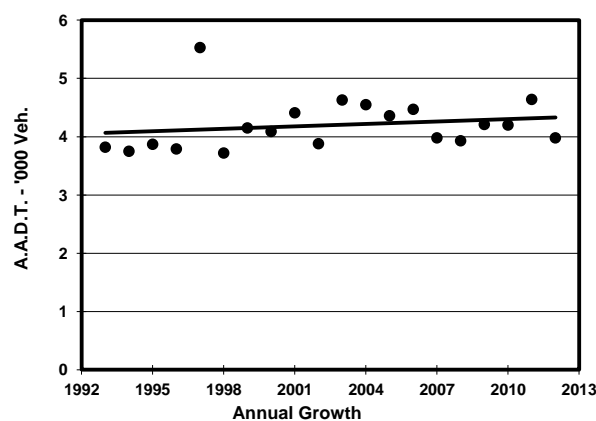
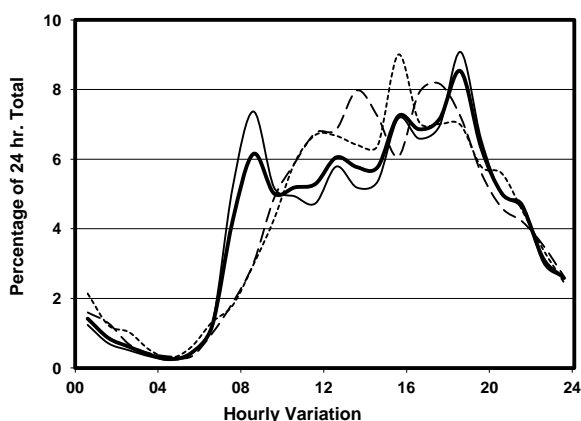
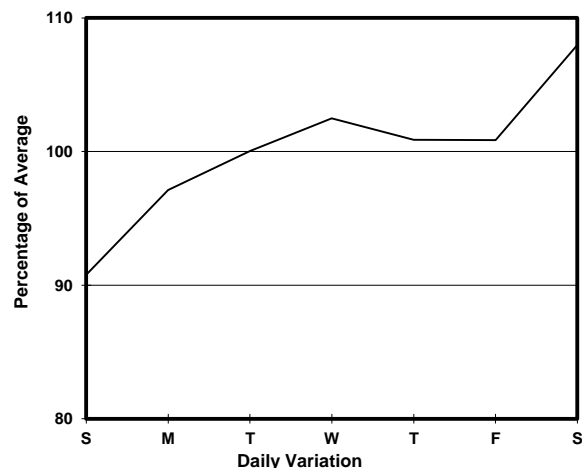
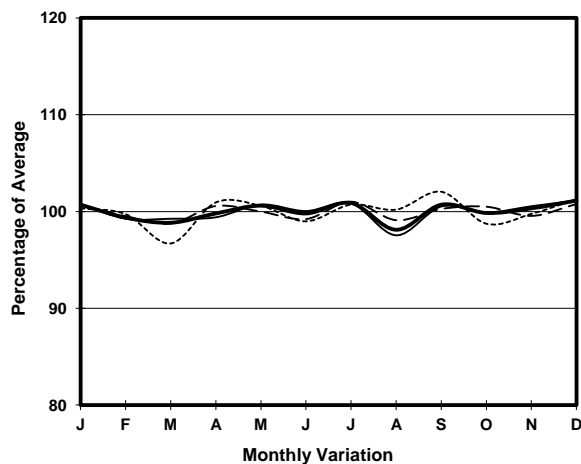


YEAR 2012
 COVERAGE (B) STATION 4401
 ROAD NETWORK MINOR
 ROAD TYPE LOCAL DISTRIBUTOR

LINK HO MAN TIN ST (from WATERLOO RD to HO MAN TIN HILL RD)



1. TRAFFIC FLOW VARIATION AND GROWTH



2. TRAFFIC CHARACTERISTICS (BY DIRECTION)

Parameter	All - Day	Mon. - Fri.	Sat.	Sun.
SOUTH BOUND				
A.A.D.T.	2320	2320	2690	2040
R 12 / 24 - %	72.9	72.6	75.3	71.1
R 16 / 24 - %	91.6	92	91.8	89
AM Peak Hour	0800-0900	0800-0900	0900-1000	0900-1000
One-way flow at AM peak hour	150	180	120	80
T - % (AM)	-	9.5	-	-
PM Peak Hour	1800-1900	1800-1900	1700-1800	1600-1700
One-way flow at PM peak hour	190	200	340	170
T - % (PM)	-	-	-	-
Prop.of commercial vehicles - 16 hr.	-	4.3	-	-
NORTH BOUND				
A.A.D.T.	1660	1690	1620	1590
R 12 / 24 - %	73.8	74.6	71.4	71.2
R 16 / 24 - %	93.3	93.8	91.6	92.3
AM Peak Hour	0800-0900	0800-0900	0900-1000	0900-1000
One-way flow at AM peak hour	100	120	90	70
T - % (AM)	-	3.1	-	-
PM Peak Hour	1800-1900	1800-1900	1600-1700	1800-1900
One-way flow at PM peak hour	150	160	130	120
T - % (PM)	-	-	-	-
Prop.of commercial vehicles - 16 hr.	-	0.6	-	-

3. OTHER INFORMATION AND COMMENT

4. Vehicle classification and occupancy - Monday to Friday

Time		Class of vehicle									
		Motor	Private	Taxi	Private	PLB	Goods veh.		Non	Fr. Bus	
		Cycle	Car		LB		Light	M & H	Fr. Bus	SD	DD
0700-0800	Pro	0.0	24.0	20.0	20.0	8.0	4.0	0.0	24.0	0.0	0.0
	Ocp	0.0	1.7	1.0	6.0	4.0	2.0	0.0	11.2	0.0	0.0
0800-0900	Pro	0.0	71.6	10.8	2.7	1.4	6.8	1.4	5.4	0.0	0.0
	Ocp	0.0	1.7	1.6	7.0	6.0	1.8	2.0	5.0	0.0	0.0
0900-1000	Pro	1.4	68.6	15.7	0.0	2.9	10.0	1.4	0.0	0.0	0.0
	Ocp	1.0	1.7	1.9	0.0	4.5	1.4	1.0	0.0	0.0	0.0
1000-1100	Pro	0.0	54.3	11.4	0.0	5.7	25.7	0.0	2.9	0.0	0.0
	Ocp	0.0	1.4	2.5	0.0	8.5	1.9	0.0	2.0	0.0	0.0
1100-1200	Pro	0.0	57.1	21.4	0.0	2.4	19.0	0.0	0.0	0.0	0.0
	Ocp	0.0	1.4	1.8	0.0	4.0	1.5	0.0	0.0	0.0	0.0
1200-1300	Pro	0.0	50.0	22.0	6.0	2.0	16.0	0.0	4.0	0.0	0.0
	Ocp	0.0	1.9	1.9	7.0	10.0	2.0	0.0	8.5	0.0	0.0
1300-1400	Pro	4.0	52.0	30.0	0.0	2.0	12.0	0.0	0.0	0.0	0.0
	Ocp	1.0	1.7	1.6	0.0	6.0	2.3	0.0	0.0	0.0	0.0
1400-1500	Pro	2.0	51.0	31.4	0.0	2.0	13.7	0.0	0.0	0.0	0.0
	Ocp	1.0	1.4	1.9	0.0	12.0	1.4	0.0	0.0	0.0	0.0
1500-1600	Pro	2.8	44.4	27.8	2.8	1.4	13.9	0.0	6.9	0.0	0.0
	Ocp	1.0	1.7	1.7	8.5	13.0	2.3	0.0	13.4	0.0	0.0
1600-1700	Pro	5.0	61.7	18.3	0.0	1.7	6.7	0.0	6.7	0.0	0.0
	Ocp	1.0	1.4	1.5	0.0	13.0	1.5	0.0	8.0	0.0	0.0
1700-1800	Pro	6.9	48.3	32.8	5.2	1.7	3.4	0.0	1.7	0.0	0.0
	Ocp	1.0	1.6	1.9	6.7	17.0	1.0	0.0	4.0	0.0	0.0
1800-1900 Peak hour	Pro	0.0	70.9	25.3	0.0	1.3	2.5	0.0	0.0	0.0	0.0
	Ocp	0.0	1.5	1.3	0.0	15.0	1.5	0.0	0.0	0.0	0.0
1900-2000	Pro	0.0	67.1	30.0	0.0	1.4	1.4	0.0	0.0	0.0	0.0
	Ocp	0.0	1.3	1.3	0.0	17.0	2.0	0.0	0.0	0.0	0.0
2000-2100	Pro	0.0	62.8	34.9	0.0	2.3	0.0	0.0	0.0	0.0	0.0
	Ocp	0.0	1.6	1.4	0.0	8.0	0.0	0.0	0.0	0.0	0.0
2100-2200	Pro	2.5	55.0	40.0	0.0	2.5	0.0	0.0	0.0	0.0	0.0
	Ocp	1.0	1.8	1.6	0.0	6.0	0.0	0.0	0.0	0.0	0.0
2200-2300	Pro	0.0	43.9	53.7	0.0	2.4	0.0	0.0	0.0	0.0	0.0
	Ocp	0.0	1.6	1.5	0.0	6.0	0.0	0.0	0.0	0.0	0.0
16 hours	Pro	1.6	57.4	25.9	1.7	2.2	8.1	0.2	2.7	0.0	0.0
	Ocp	1.0	1.6	1.6	6.8	8.8	1.8	1.5	9.1	0.0	0.0

Legend

Pro. Proportion of vehicles in % (Sum may not add up to 100% due to figure rounding)
Ocp. Average occupancy of vehicles
M&H Medium and Heavy