

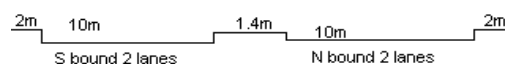
YEAR 2012

COVERAGE (B) STATION 6203

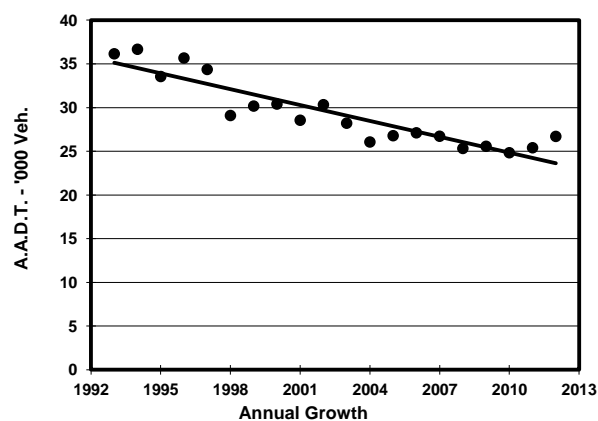
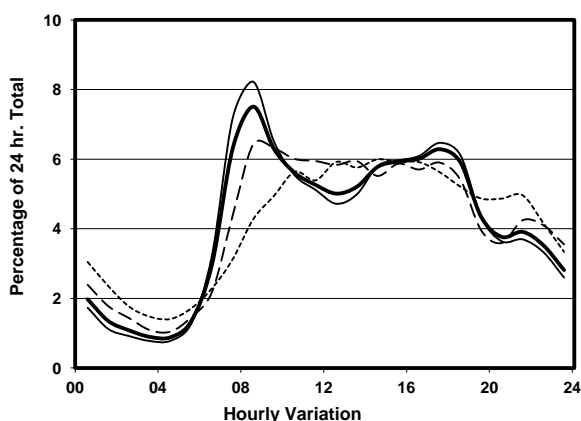
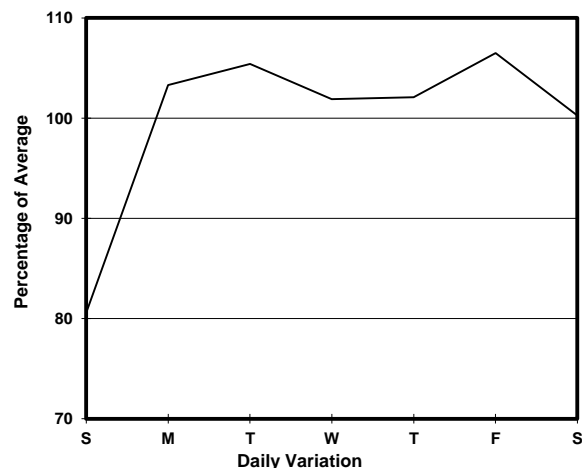
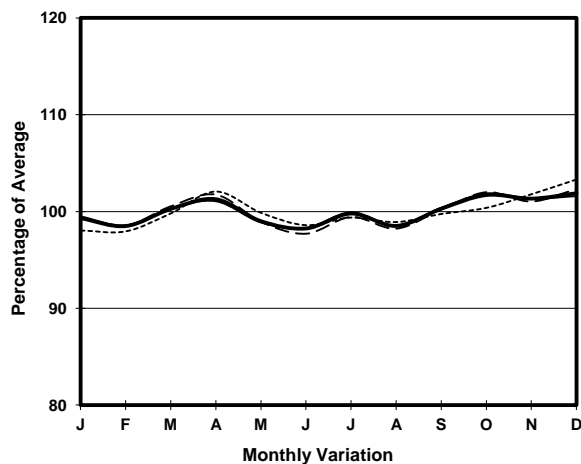
ROAD NETWORK MAJOR

ROAD TYPE PRIMARY DISTRIBUTOR

LINK CASTLE PEAK RD - KWAI CHUNG (from CHING CHEUNG RD to TAI WO INT)



## 1. TRAFFIC FLOW VARIATION AND GROWTH



## 2. TRAFFIC CHARACTERISTICS (BY DIRECTION)

| Parameter                            | All - Day | Mon. - Fri. | Sat.      | Sun.      |
|--------------------------------------|-----------|-------------|-----------|-----------|
| <b>SOUTH BOUND</b>                   |           |             |           |           |
| A.A.D.T.                             | 13740     | 14280       | 14150     | 11600     |
| R 12 / 24 - %                        | 71.4      | 72.9        | 69.2      | 64.8      |
| R 16 / 24 - %                        | 87        | 88.3        | 84.6      | 82        |
| AM Peak Hour                         | 0800-0900 | 0800-0900   | 0900-1000 | 0900-1000 |
| One-way flow at AM peak hour         | 1120      | 1300        | 970       | 570       |
| T - % (AM)                           | -         | 7.9         | -         | -         |
| PM Peak Hour                         | 1800-1900 | 1800-1900   | 1800-1900 | 1600-1700 |
| One-way flow at PM peak hour         | 900       | 970         | 860       | 680       |
| T - % (PM)                           | -         | 7.5         | -         | -         |
| Prop.of commercial vehicles - 16 hr. | -         | 8           | -         | -         |
| <b>NORTH BOUND</b>                   |           |             |           |           |
| A.A.D.T.                             | 12960     | 13730       | 12890     | 10170     |
| R 12 / 24 - %                        | 70.9      | 72.4        | 69.2      | 62.6      |
| R 16 / 24 - %                        | 86.3      | 86.9        | 85.7      | 83.3      |
| AM Peak Hour                         | 0800-0900 | 0700-0800   | 0800-0900 | 0900-1000 |
| One-way flow at AM peak hour         | 880       | 1000        | 800       | 500       |
| T - % (AM)                           | -         | 14.9        | -         | -         |
| PM Peak Hour                         | 1700-1800 | 1700-1800   | 1600-1700 | 1600-1700 |
| One-way flow at PM peak hour         | 860       | 940         | 810       | 610       |
| T - % (PM)                           | -         | 9.4         | -         | -         |
| Prop.of commercial vehicles - 16 hr. | -         | 10.4        | -         | -         |

## 3. OTHER INFORMATION AND COMMENT

**4. Vehicle classification and occupancy - Monday to Friday**

| Time                   |     | Class of vehicle |         |      |         |      |            |       |         |         |      |
|------------------------|-----|------------------|---------|------|---------|------|------------|-------|---------|---------|------|
|                        |     | Motor            | Private | Taxi | Private | PLB  | Goods veh. |       | Non     | Fr. Bus |      |
|                        |     | Cycle            | Car     |      | LB      |      | Light      | M & H | Fr. Bus | SD      | DD   |
| 0700-0800              | Pro | 4.4              | 23.9    | 28.9 | 1.6     | 7.8  | 19.6       | 2.8   | 5.3     | 0.0     | 5.8  |
|                        | Ocp | 1.0              | 1.4     | 1.9  | 12.6    | 11.2 | 1.5        | 1.6   | 10.8    | 0.0     | 68.9 |
| 0800-0900<br>Peak hour | Pro | 5.4              | 41.6    | 24.2 | 1.0     | 5.9  | 13.3       | 1.8   | 2.7     | 0.0     | 4.2  |
|                        | Ocp | 1.1              | 1.3     | 2.0  | 7.3     | 13.7 | 1.8        | 1.4   | 21.1    | 0.0     | 73.7 |
| 0900-1000              | Pro | 3.6              | 36.3    | 28.2 | 1.1     | 4.1  | 17.9       | 2.8   | 1.5     | 0.0     | 4.5  |
|                        | Ocp | 1.1              | 1.4     | 1.9  | 1.7     | 14.6 | 1.6        | 1.7   | 9.8     | 0.0     | 43.1 |
| 1000-1100              | Pro | 2.6              | 38.5    | 23.1 | 1.5     | 3.3  | 21.3       | 5.4   | 0.3     | 0.0     | 4.0  |
|                        | Ocp | 1.0              | 1.5     | 1.9  | 2.0     | 8.9  | 1.7        | 1.7   | 12.0    | 0.0     | 32.2 |
| 1100-1200              | Pro | 2.4              | 32.4    | 17.1 | 1.8     | 5.0  | 31.0       | 5.0   | 0.6     | 0.0     | 4.7  |
|                        | Ocp | 1.0              | 1.6     | 1.9  | 2.8     | 12.6 | 1.6        | 1.5   | 20.0    | 0.0     | 35.3 |
| 1200-1300              | Pro | 1.8              | 35.1    | 23.7 | 1.5     | 4.1  | 23.1       | 3.2   | 3.5     | 0.0     | 4.0  |
|                        | Ocp | 1.0              | 1.4     | 1.9  | 7.6     | 10.3 | 1.5        | 1.7   | 15.0    | 0.0     | 36.8 |
| 1300-1400              | Pro | 5.0              | 32.9    | 20.2 | 1.1     | 4.4  | 27.3       | 2.2   | 2.8     | 0.0     | 4.1  |
|                        | Ocp | 1.2              | 1.4     | 1.9  | 5.8     | 8.6  | 1.7        | 1.5   | 12.4    | 0.0     | 35.4 |
| 1400-1500              | Pro | 3.9              | 34.4    | 21.3 | 1.1     | 5.0  | 27.4       | 2.2   | 0.8     | 0.0     | 3.8  |
|                        | Ocp | 1.1              | 1.5     | 2.0  | 2.0     | 8.7  | 1.5        | 1.3   | 9.0     | 0.0     | 39.8 |
| 1500-1600              | Pro | 3.3              | 34.8    | 22.1 | 2.6     | 4.9  | 22.3       | 4.2   | 2.4     | 0.0     | 3.4  |
|                        | Ocp | 1.0              | 1.4     | 1.7  | 3.7     | 6.2  | 1.5        | 1.3   | 13.4    | 0.0     | 37.6 |
| 1600-1700              | Pro | 5.0              | 34.2    | 20.9 | 2.4     | 3.1  | 22.0       | 4.6   | 3.7     | 0.0     | 4.1  |
|                        | Ocp | 1.0              | 1.4     | 1.8  | 4.4     | 10.9 | 1.4        | 1.6   | 10.1    | 0.0     | 38.3 |
| 1700-1800              | Pro | 2.6              | 41.3    | 20.3 | 1.0     | 4.3  | 20.8       | 2.1   | 2.6     | 0.0     | 5.0  |
|                        | Ocp | 1.0              | 1.4     | 1.5  | 1.8     | 13.1 | 1.6        | 1.7   | 4.5     | 0.0     | 58.5 |
| 1800-1900              | Pro | 4.2              | 46.5    | 18.8 | 0.4     | 7.4  | 14.4       | 1.9   | 1.9     | 0.0     | 4.4  |
|                        | Ocp | 1.1              | 1.4     | 2.2  | 2.0     | 15.2 | 1.6        | 1.7   | 7.7     | 0.0     | 78.9 |
| 1900-2000              | Pro | 1.8              | 53.3    | 19.7 | 0.3     | 11.0 | 7.7        | 0.8   | 1.3     | 0.0     | 4.2  |
|                        | Ocp | 1.1              | 1.5     | 1.8  | 2.0     | 10.2 | 1.5        | 1.3   | 3.0     | 0.0     | 62.0 |
| 2000-2100              | Pro | 4.2              | 40.3    | 25.5 | 0.8     | 10.3 | 8.7        | 1.9   | 2.3     | 0.0     | 6.1  |
|                        | Ocp | 1.2              | 1.6     | 1.9  | 1.0     | 12.4 | 1.4        | 1.0   | 1.2     | 0.0     | 42.3 |
| 2100-2200              | Pro | 3.8              | 44.7    | 25.9 | 0.4     | 12.5 | 7.1        | 0.0   | 0.0     | 0.0     | 5.6  |
|                        | Ocp | 1.4              | 1.7     | 2.3  | 1.0     | 10.5 | 1.4        | 0.0   | 0.0     | 0.0     | 38.9 |
| 2200-2300              | Pro | 4.3              | 38.5    | 26.1 | 0.0     | 21.4 | 3.1        | 0.4   | 0.8     | 0.0     | 5.4  |
|                        | Ocp | 1.2              | 1.6     | 1.9  | 0.0     | 6.3  | 1.5        | 1.0   | 2.0     | 0.0     | 36.9 |
| 16 hours               | Pro | 3.7              | 38.2    | 22.7 | 1.2     | 6.5  | 18.3       | 2.7   | 2.1     | 0.0     | 4.5  |
|                        | Ocp | 1.1              | 1.5     | 1.9  | 4.3     | 10.8 | 1.6        | 1.5   | 11.1    | 0.0     | 49.4 |

**Legend**

- Pro.** Proportion of vehicles in % (Sum may not add up to 100% due to figure rounding)
- Ocp.** Average occupancy of vehicles
- M&H** Medium and Heavy