

YEAR

2012

LINK

LAI KING HILL RD (from PMH INT to KING CHO RD)

COVERAGE (B) STATION

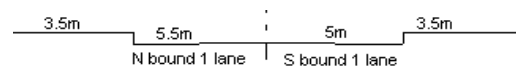
6204

ROAD NETWORK

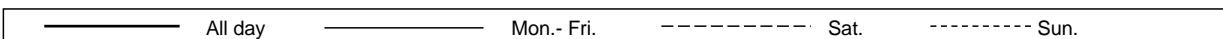
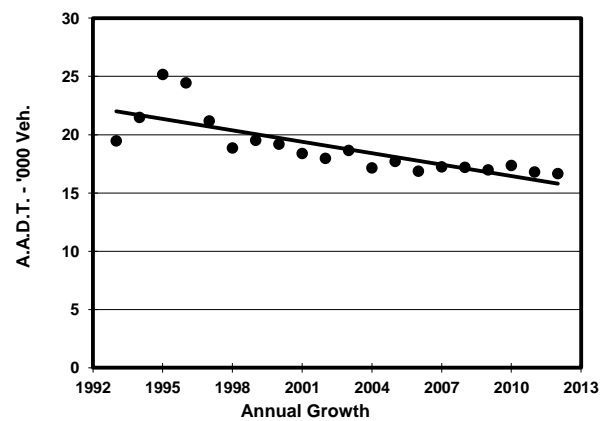
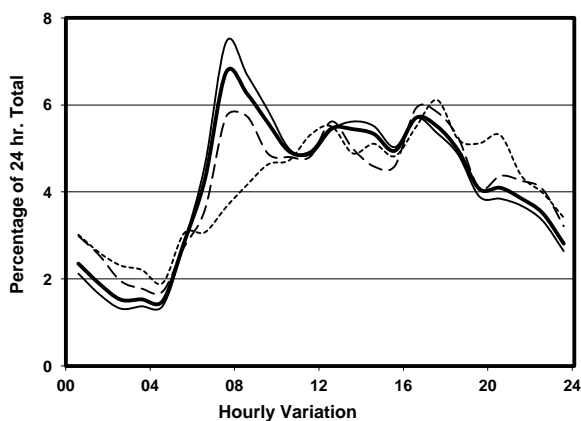
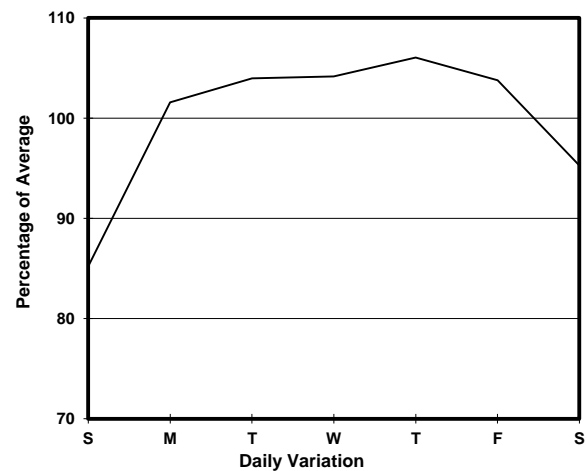
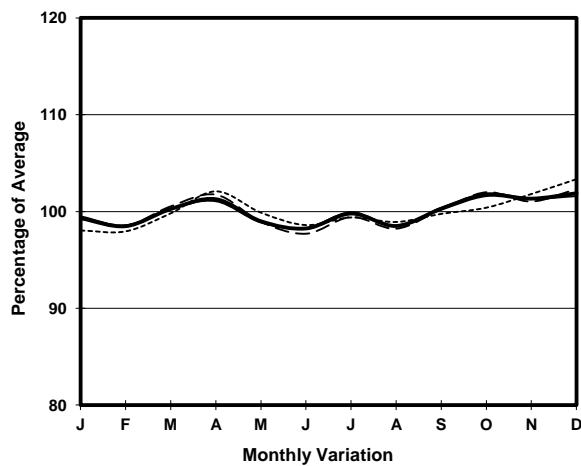
MAJOR

ROAD TYPE

DISTRICT DISTRIBUTOR



## 1. TRAFFIC FLOW VARIATION AND GROWTH



## 2. TRAFFIC CHARACTERISTICS (BY DIRECTION)

Parameter	All - Day	Mon. - Fri.	Sat.	Sun.
<b>SOUTH BOUND</b>				
A.A.D.T.	8470	8860	8150	7340
R 12 / 24 - %	64.8	66.2	62	60
R 16 / 24 - %	80.1	80.8	78.4	77.7
AM Peak Hour	0700-0800	0700-0800	0800-0900	0900-1000
One-way flow at AM peak hour	620	710	520	340
T - % (AM)	-	14.7	-	-
PM Peak Hour	1600-1700	1600-1700	1700-1800	1700-1800
One-way flow at PM peak hour	460	480	470	460
T - % (PM)	-	9.2	-	-
Prop.of commercial vehicles - 16 hr.	-	6.6	-	-
<b>NORTH BOUND</b>				
A.A.D.T.	8190	8590	7840	6990
R 12 / 24 - %	66.7	68.5	63.5	59.3
R 16 / 24 - %	82.5	83.4	80.7	79.1
AM Peak Hour	0700-0800	0700-0800	0700-0800	0900-1000
One-way flow at AM peak hour	510	590	410	330
T - % (AM)	-	12.8	-	-
PM Peak Hour	1600-1700	1600-1700	1600-1700	1700-1800
One-way flow at PM peak hour	490	520	480	420
T - % (PM)	-	9.4	-	-
Prop.of commercial vehicles - 16 hr.	-	7.9	-	-

## 3. OTHER INFORMATION AND COMMENT

**4. Vehicle classification and occupancy - Monday to Friday**

Time		Class of vehicle									
		Motor Cycle	Private Car	Taxi	Private LB	PLB	Goods veh.		Non Fr. Bus	Fr. Bus	
							Light	M & H		SD	DD
0700-0800 Peak hour	Pro	4.4	15.6	38.1	3.4	16.1	8.3	2.0	6.8	0.4	4.8
	Ocp	1.1	1.4	1.7	9.3	9.4	1.5	2.0	9.6	10.7	15.0
0800-0900	Pro	2.2	15.6	53.1	2.5	13.4	6.3	0.9	2.5	0.1	3.4
	Ocp	1.0	1.3	1.7	2.0	8.4	2.0	2.3	8.1	17.0	15.5
0900-1000	Pro	0.7	17.1	50.5	3.9	13.1	8.9	1.6	0.3	0.2	3.6
	Ocp	1.0	1.4	1.8	3.6	8.0	1.7	2.2	2.0	10.3	8.7
1000-1100	Pro	0.9	10.8	49.3	4.5	13.9	12.6	2.2	1.3	0.1	4.4
	Ocp	1.0	1.5	1.8	1.8	10.5	1.5	2.4	3.3	3.0	8.7
1100-1200	Pro	2.8	12.1	38.5	5.5	18.7	16.5	1.1	0.6	0.4	3.9
	Ocp	1.0	1.4	1.7	2.0	9.8	1.6	3.0	4.0	5.3	9.8
1200-1300	Pro	1.5	14.9	44.3	3.1	16.5	7.2	3.6	4.1	0.3	4.5
	Ocp	1.0	1.9	1.7	4.3	9.3	1.7	1.1	11.8	2.5	9.0
1300-1400	Pro	2.7	12.0	49.0	0.9	16.0	13.4	1.3	0.4	0.2	4.0
	Ocp	1.0	1.4	2.0	1.5	12.8	2.1	2.0	2.0	14.0	10.1
1400-1500	Pro	2.2	23.3	42.6	3.4	13.3	9.9	1.3	0.0	0.2	3.8
	Ocp	1.2	1.5	1.7	2.3	10.5	2.1	2.0	0.0	6.5	9.3
1500-1600	Pro	2.4	13.9	44.0	5.3	14.3	13.4	0.5	1.9	0.5	3.9
	Ocp	1.0	1.6	1.7	3.7	11.5	1.6	2.0	3.5	4.8	10.1
1600-1700	Pro	3.0	17.2	36.5	8.6	15.2	10.1	0.5	4.6	0.1	4.1
	Ocp	1.0	1.6	1.7	4.0	10.4	1.6	2.0	5.3	9.0	11.8
1700-1800	Pro	3.1	20.6	36.2	4.7	14.0	13.2	0.8	2.7	0.5	4.2
	Ocp	1.1	1.8	1.7	3.5	13.4	2.0	2.0	6.9	10.0	15.0
1800-1900	Pro	5.4	37.5	30.9	0.8	11.5	8.7	0.8	1.2	0.1	3.0
	Ocp	1.2	1.6	1.7	2.5	12.8	1.7	1.5	16.0	4.0	18.7
1900-2000	Pro	2.8	25.1	41.9	1.9	16.7	7.0	0.0	0.9	0.3	3.4
	Ocp	1.0	1.6	1.8	1.3	9.8	1.7	0.0	7.0	8.7	15.6
2000-2100	Pro	6.5	25.9	46.5	0.0	13.6	2.9	0.0	0.0	0.3	4.3
	Ocp	1.0	1.6	1.4	0.0	8.3	1.4	0.0	0.0	5.0	9.4
2100-2200	Pro	4.3	31.0	41.5	0.0	13.6	3.1	0.6	0.6	0.3	5.0
	Ocp	1.0	1.8	1.8	0.0	7.8	1.8	1.0	1.0	10.0	8.8
2200-2300	Pro	6.3	22.7	46.0	0.0	13.2	4.4	0.6	0.6	0.3	5.8
	Ocp	1.0	1.6	1.4	0.0	5.9	1.1	1.0	1.0	3.5	10.0
16 hours	Pro	3.0	19.5	43.4	3.1	14.5	9.3	1.1	1.8	0.3	4.0
	Ocp	1.1	1.6	1.7	3.4	10.0	1.7	1.9	7.7	7.8	11.6

**Legend**

**Pro.** Proportion of vehicles in % (Sum may not add up to 100% due to figure rounding)  
**Ocp.** Average occupancy of vehicles  
**M&H** Medium and Heavy