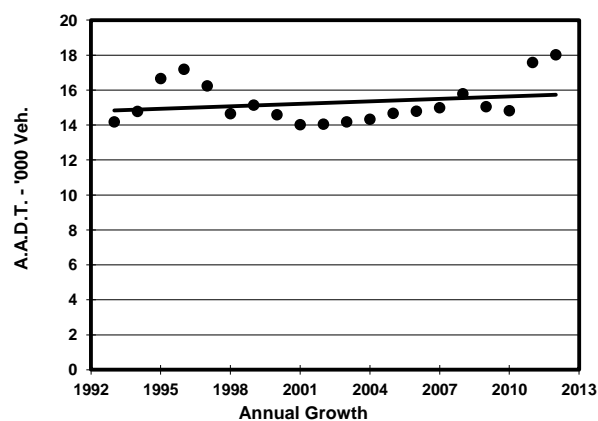
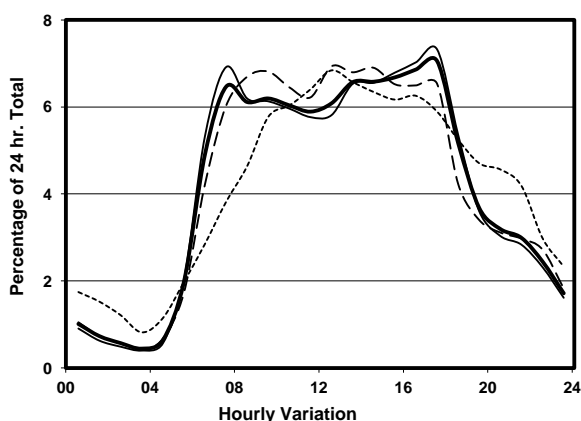
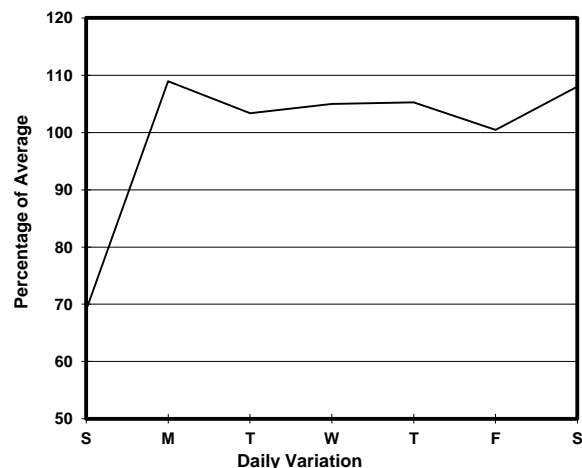
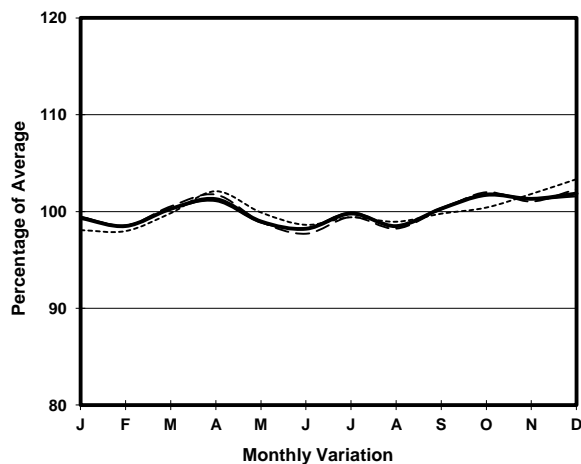


YEAR 2012  
 COVERAGE (B) STATION 6207  
 ROAD NETWORK MAJOR  
 ROAD TYPE RURAL ROAD

LINK KAM TIN RD (from KAM SHEUNG RD WESTERN JUNCTION to FAN KAM RD)



## 1. TRAFFIC FLOW VARIATION AND GROWTH



## 2. TRAFFIC CHARACTERISTICS (BY DIRECTION)

Parameter	All - Day	Mon. - Fri.	Sat.	Sun.
<b>EAST BOUND</b>				
A.A.D.T.	9070	9680	9900	6280
R 12 / 24 - %	75.4	76.2	76.1	67.8
R 16 / 24 - %	88.2	88.5	88.7	85.3
AM Peak Hour	0700-0800	0700-0800	0900-1000	0900-1000
One-way flow at AM peak hour	630	720	670	320
T - % (AM)	-	15.3	-	-
PM Peak Hour	1600-1700	1600-1700	1600-1700	1600-1700
One-way flow at PM peak hour	590	640	600	390
T - % (PM)	-	13.8	-	-
Prop.of commercial vehicles - 16 hr.	-	14.2	-	-
<b>WEST BOUND</b>				
A.A.D.T.	8950	9480	9880	6380
R 12 / 24 - %	76.1	76.5	77.1	72.1
R 16 / 24 - %	87.8	87.7	88.9	87.5
AM Peak Hour	0900-1000	0700-0800	0900-1000	0900-1000
One-way flow at AM peak hour	540	600	680	410
T - % (AM)	-	20.7	-	-
PM Peak Hour	1700-1800	1700-1800	1700-1800	1600-1700
One-way flow at PM peak hour	700	780	720	410
T - % (PM)	-	11.9	-	-
Prop.of commercial vehicles - 16 hr.	-	14.5	-	-

## 3. OTHER INFORMATION AND COMMENT

**4. Vehicle classification and occupancy - Monday to Friday**

Time		Class of vehicle									
		Motor	Private	Taxi	Private	PLB	Goods veh.		Non	Fr. Bus	
		Cycle	Car		LB		Light	M & H	Fr. Bus	SD	DD
0700-0800	Pro	4.1	38.2	11.0	1.8	8.7	17.9	14.3	1.8	0.6	1.5
	Ocp	1.1	1.7	2.0	7.0	13.9	1.8	1.2	14.3	26.0	36.4
0800-0900	Pro	1.2	44.4	7.9	1.2	5.6	19.8	17.0	0.0	1.1	1.8
	Ocp	1.0	1.5	2.0	9.7	15.7	1.5	1.1	0.0	25.4	31.5
0900-1000	Pro	2.4	47.9	7.3	0.0	2.4	21.8	16.7	0.0	0.7	0.8
	Ocp	1.0	1.3	1.7	0.0	12.8	1.4	1.1	0.0	13.0	18.7
1000-1100	Pro	1.5	33.0	8.7	1.1	3.8	30.4	19.7	0.0	0.6	1.1
	Ocp	1.0	1.4	1.6	2.3	9.9	1.5	1.0	0.0	9.2	12.4
1100-1200	Pro	0.7	43.2	4.0	2.9	2.9	26.4	17.9	0.4	0.6	0.9
	Ocp	1.0	1.3	1.9	1.1	8.9	1.7	1.1	1.0	11.0	13.8
1200-1300	Pro	0.4	40.7	9.0	2.5	4.0	28.1	12.6	1.1	0.7	1.0
	Ocp	1.0	1.5	1.8	6.0	9.8	1.5	1.0	2.3	12.9	11.1
1300-1400	Pro	0.0	41.9	7.0	1.2	4.3	32.1	11.7	0.0	0.9	0.9
	Ocp	0.0	1.5	1.8	2.3	11.3	1.5	1.1	0.0	9.6	9.2
1400-1500	Pro	0.9	41.5	8.3	0.6	2.8	26.1	18.1	0.0	0.8	0.8
	Ocp	1.0	1.5	1.7	1.5	12.0	1.4	1.2	0.0	10.8	13.5
1500-1600	Pro	1.3	45.1	7.7	0.6	2.2	25.6	15.0	1.0	0.7	0.8
	Ocp	1.0	1.4	1.4	2.5	14.3	1.5	1.1	14.3	11.9	9.6
1600-1700	Pro	0.0	44.4	4.7	1.1	2.9	35.3	6.9	2.6	0.8	1.2
	Ocp	0.0	1.4	2.1	1.7	12.5	1.5	1.1	3.9	13.0	15.8
1700-1800 Peak hour	Pro	2.2	48.7	9.0	1.1	3.6	24.9	7.6	1.1	0.9	0.9
	Ocp	1.0	1.5	1.9	1.3	13.3	1.7	1.1	2.3	18.1	25.5
1800-1900	Pro	3.2	57.9	7.4	1.0	3.8	17.6	7.0	0.3	0.6	1.2
	Ocp	1.0	1.5	1.7	1.0	14.3	1.4	1.0	10.0	22.3	29.9
1900-2000	Pro	0.9	67.6	8.2	1.3	6.5	10.3	3.0	0.0	1.0	1.3
	Ocp	1.0	1.4	1.8	2.7	15.3	1.3	1.1	0.0	16.1	26.7
2000-2100	Pro	2.4	50.8	21.1	0.6	7.9	10.9	3.0	0.6	0.9	1.8
	Ocp	1.0	1.4	1.6	1.0	12.9	1.3	1.0	1.0	13.7	9.3
2100-2200	Pro	2.8	54.2	21.5	0.7	5.6	11.8	0.7	0.0	1.2	1.6
	Ocp	1.3	1.4	1.6	5.0	12.0	1.5	1.0	0.0	10.9	10.4
2200-2300	Pro	2.9	49.6	25.2	1.4	5.0	10.1	2.2	0.0	2.2	1.4
	Ocp	1.0	1.4	1.4	2.5	7.9	1.3	1.3	0.0	6.3	14.3
16 hours	Pro	1.6	46.4	9.3	1.2	4.2	23.0	11.8	0.6	0.8	1.1
	Ocp	1.0	1.4	1.7	3.4	12.6	1.5	1.1	6.7	14.2	19.2

**Legend**

**Pro.** Proportion of vehicles in % (Sum may not add up to 100% due to figure rounding)  
**Ocp.** Average occupancy of vehicles  
**M&H** Medium and Heavy