

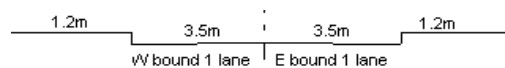
YEAR 2012

COVER AGE (B) STATION 6209

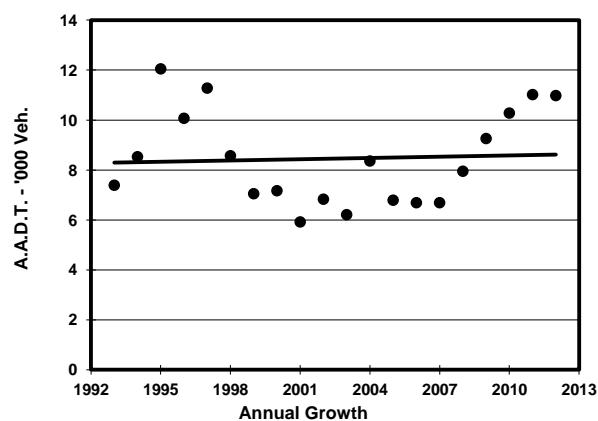
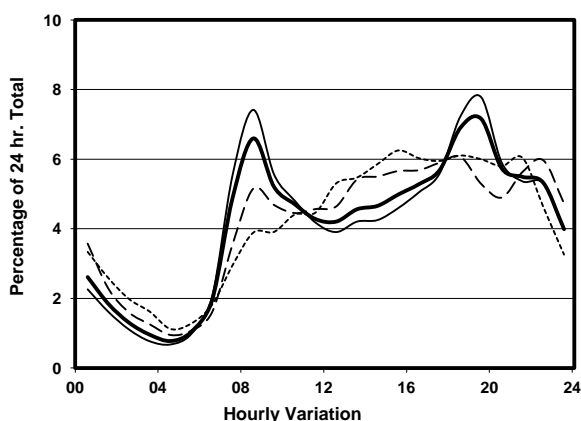
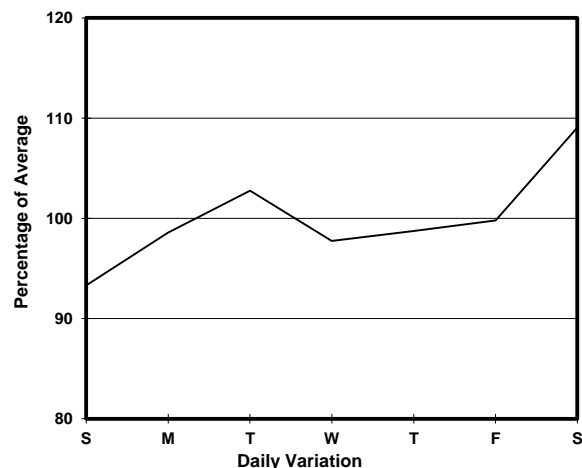
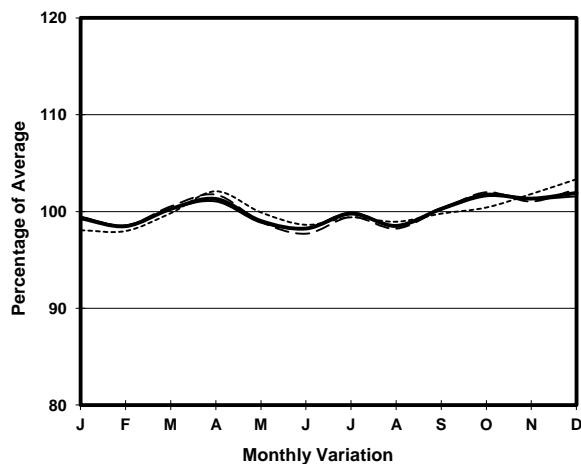
ROAD NETWORK MAJOR

ROAD TYPE RURAL ROAD

LINK CASTLE PEAK RD - TSUEN WAN, TING KAU & SHAM
TSENG (from TUEN MUN RD to SHAM TSENG)



1. TRAFFIC FLOW VARIATION AND GROWTH



2. TRAFFIC CHARACTERISTICS (BY DIRECTION)

| Parameter | All - Day | Mon. - Fri. | Sat. | Sun. |
|--------------------------------------|-----------|-------------|-----------|-----------|
| EAST BOUND | | | | |
| A.A.D.T. | 5230 | 5250 | 5700 | 4770 |
| R 12 / 24 - % | 65.1 | 66.2 | 62.5 | 62.2 |
| R 16 / 24 - % | 84.1 | 85.3 | 81.3 | 80.6 |
| AM Peak Hour | 0800-0900 | 0800-0900 | 0800-0900 | 0900-1000 |
| One-way flow at AM peak hour | 440 | 500 | 400 | 240 |
| T - % (AM) | - | 17.6 | - | - |
| PM Peak Hour | 1700-1800 | 1700-1800 | 1700-1800 | 1700-1800 |
| One-way flow at PM peak hour | 270 | 270 | 300 | 280 |
| T - % (PM) | - | 8.4 | - | - |
| Prop.of commercial vehicles - 16 hr. | - | 11.6 | - | - |
| WEST BOUND | | | | |
| A.A.D.T. | 5750 | 5710 | 6310 | 5530 |
| R 12 / 24 - % | 59 | 58.7 | 60.1 | 59.2 |
| R 16 / 24 - % | 87 | 87.9 | 84.5 | 85.1 |
| AM Peak Hour | 0800-0900 | 0800-0900 | 0900-1000 | 0800-0900 |
| One-way flow at AM peak hour | 280 | 310 | 260 | 190 |
| T - % (AM) | - | 22.6 | - | - |
| PM Peak Hour | 1800-1900 | 1800-1900 | 1800-1900 | 1600-1700 |
| One-way flow at PM peak hour | 500 | 540 | 440 | 370 |
| T - % (PM) | - | 5 | - | - |
| Prop.of commercial vehicles - 16 hr. | - | 9.4 | - | - |

3. OTHER INFORMATION AND COMMENT

4. Vehicle classification and occupancy - Monday to Friday

| Time | | Class of vehicle | | | | | | | | | |
|------------------------|-----|------------------|----------------|------|---------------|------|------------|-------|----------------|---------|------|
| | | Motor Cycle | Private Car | Taxi | Private LB | PLB | Goods veh. | | Non Fr. Bus | Fr. Bus | |
| | | | | | | | Light | M & H | | SD | DD |
| 0700-0800 | Pro | 3.8 | 20.7 | 10.0 | 2.3 | 25.3 | 19.2 | 5.4 | 10.7 | 0.6 | 1.9 |
| | Ocp | 1.2 | 1.4 | 1.4 | 10.7 | 12.7 | 1.7 | 1.0 | 10.6 | 13.3 | 25.0 |
| 0800-0900 | Pro | 1.0 | 48.3 | 8.7 | 2.0 | 10.7 | 9.7 | 8.1 | 9.7 | 0.9 | 0.9 |
| | Ocp | 1.0 | 1.5 | 1.5 | 5.0 | 10.2 | 2.3 | 1.2 | 12.0 | 13.9 | 21.9 |
| 0900-1000 | Pro | 2.0 | 43.7 | 13.1 | 1.3 | 16.3 | 10.4 | 9.1 | 2.0 | 1.1 | 1.0 |
| | Ocp | 1.0 | 1.4 | 1.5 | 1.5 | 12.3 | 2.1 | 1.6 | 8.7 | 20.6 | 11.2 |
| 1000-1100 | Pro | 2.1 | 35.2 | 12.7 | 0.7 | 16.2 | 19.0 | 9.2 | 2.8 | 0.9 | 1.2 |
| | Ocp | 1.3 | 1.5 | 1.5 | 5.0 | 9.0 | 1.4 | 1.3 | 9.3 | 10.8 | 15.4 |
| 1100-1200 | Pro | 1.9 | 42.6 | 9.7 | 1.9 | 18.4 | 17.4 | 3.9 | 1.9 | 0.7 | 1.5 |
| | Ocp | 1.0 | 1.7 | 1.8 | 1.0 | 11.8 | 1.4 | 1.5 | 6.5 | 10.0 | 15.3 |
| 1200-1300 | Pro | 3.1 | 31.8 | 13.3 | 4.1 | 18.5 | 15.4 | 4.1 | 7.2 | 1.3 | 1.3 |
| | Ocp | 1.0 | 1.7 | 1.7 | 3.8 | 12.9 | 1.9 | 1.3 | 8.7 | 11.8 | 14.4 |
| 1300-1400 | Pro | 3.4 | 27.1 | 14.7 | 0.0 | 23.7 | 18.1 | 10.2 | 0.0 | 1.1 | 1.7 |
| | Ocp | 1.0 | 1.3 | 1.7 | 0.0 | 11.5 | 1.4 | 1.2 | 0.0 | 12.0 | 11.3 |
| 1400-1500 | Pro | 1.6 | 36.9 | 12.6 | 0.0 | 16.5 | 18.1 | 11.8 | 0.8 | 1.2 | 0.6 |
| | Ocp | 1.5 | 2.0 | 1.6 | 0.0 | 10.5 | 1.6 | 1.2 | 1.0 | 13.5 | 11.7 |
| 1500-1600 | Pro | 1.5 | 38.2 | 13.0 | 2.3 | 17.6 | 13.0 | 4.6 | 7.6 | 1.1 | 1.1 |
| | Ocp | 1.0 | 1.4 | 1.4 | 5.3 | 9.7 | 1.5 | 1.2 | 8.7 | 15.8 | 12.5 |
| 1600-1700 | Pro | 3.3 | 36.7 | 10.9 | 3.3 | 21.7 | 10.9 | 4.2 | 6.7 | 1.0 | 1.3 |
| | Ocp | 1.3 | 1.8 | 2.1 | 3.5 | 10.7 | 1.5 | 1.6 | 7.5 | 14.0 | 17.5 |
| 1700-1800 | Pro | 4.4 | 48.5 | 8.1 | 4.4 | 16.9 | 10.3 | 2.2 | 2.9 | 1.1 | 1.1 |
| | Ocp | 1.2 | 1.6 | 1.4 | 3.7 | 14.3 | 1.9 | 1.0 | 12.5 | 14.5 | 23.2 |
| 1800-1900 | Pro | 3.7 | 47.0 | 17.1 | 0.0 | 17.7 | 9.1 | 1.2 | 2.4 | 0.9 | 0.9 |
| | Ocp | 1.0 | 1.8 | 1.9 | 0.0 | 12.2 | 2.0 | 1.5 | 13.3 | 10.0 | 37.5 |
| 1900-2000 Peak hour | Pro | 1.6 | 62.5 | 9.6 | 0.8 | 19.1 | 3.2 | 0.0 | 2.4 | 0.3 | 0.6 |
| | Ocp | 1.3 | 1.6 | 1.5 | 5.0 | 10.6 | 1.5 | 0.0 | 12.3 | 9.0 | 38.2 |
| 2000-2100 | Pro | 3.5 | 54.5 | 8.2 | 0.0 | 26.4 | 3.5 | 0.0 | 2.3 | 0.7 | 0.9 |
| | Ocp | 1.0 | 1.5 | 1.6 | 0.0 | 9.2 | 1.7 | 0.0 | 7.8 | 12.2 | 18.0 |
| 2100-2200 | Pro | 2.0 | 45.6 | 15.0 | 0.0 | 27.2 | 4.8 | 0.0 | 3.4 | 1.0 | 1.0 |
| | Ocp | 1.0 | 1.6 | 1.6 | 0.0 | 8.9 | 2.3 | 0.0 | 18.2 | 9.0 | 15.3 |
| 2200-2300 | Pro | 1.2 | 47.2 | 19.9 | 0.6 | 23.0 | 1.2 | 0.0 | 5.0 | 0.9 | 0.9 |
| | Ocp | 1.0 | 1.8 | 1.4 | 2.0 | 10.4 | 2.5 | 0.0 | 11.4 | 11.0 | 9.8 |
| 16 hours | Pro | 2.4 | 43.8 | 12.1 | 1.4 | 19.5 | 10.4 | 4.2 | 4.3 | 0.9 | 1.1 |
| | Ocp | 1.1 | 1.6 | 1.6 | 4.4 | 10.9 | 1.7 | 1.3 | 10.6 | 12.9 | 19.2 |

Legend

- Pro.** Proportion of vehicles in % (Sum may not add up to 100% due to figure rounding)
Ocp. Average occupancy of vehicles
M&H Medium and Heavy