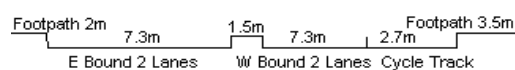
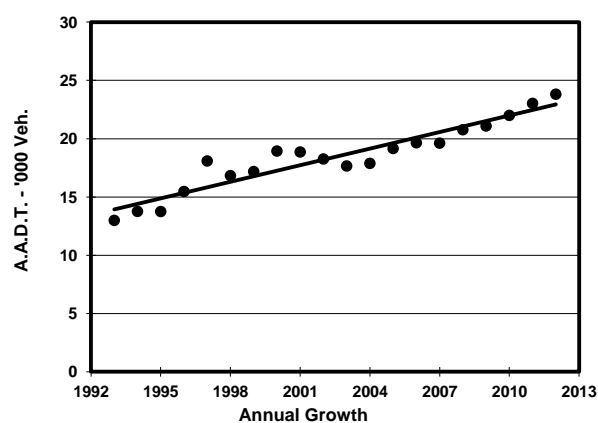
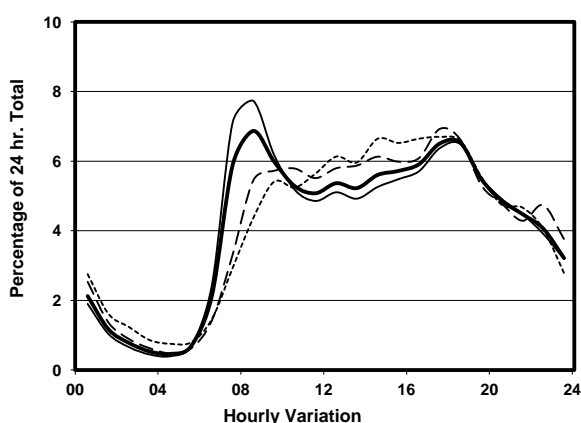
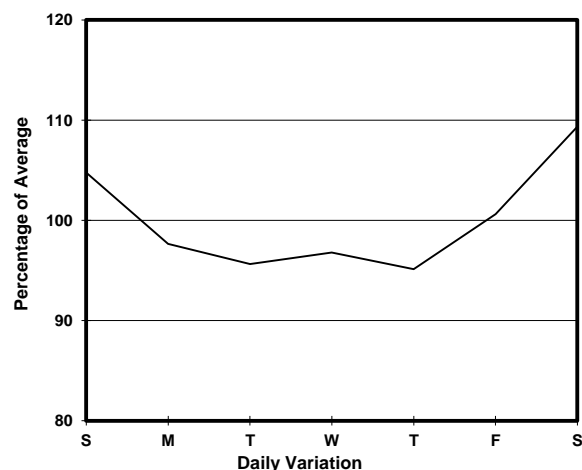
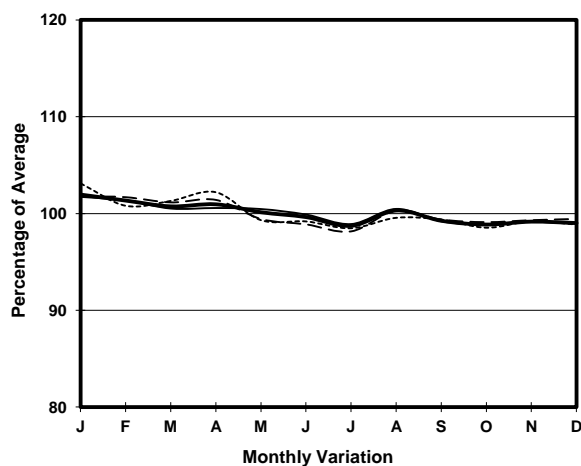


COVERAGE (B) STATION 6211  
ROAD NETWORK MAJOR  
ROAD TYPE RURAL ROAD



## 1. TRAFFIC FLOW VARIATION AND GROWTH



## 2. TRAFFIC CHARACTERISTICS (BY DIRECTION)

Parameter	All - Day	Mon. - Fri.	Sat.	Sun.
<b>EAST BOUND</b>				
A.A.D.T.	11700	11310	12900	12190
R 12 / 24 - %	65.8	65.5	66	67
R 16 / 24 - %	88.6	89.1	87.8	87.2
AM Peak Hour	0800-0900	0800-0900	0900-1000	0900-1000
One-way flow at AM peak hour	710	770	660	590
T - % (AM)	-	9.7	-	-
PM Peak Hour	1800-1900	1800-1900	1700-1800	1600-1700
One-way flow at PM peak hour	820	820	890	890
T - % (PM)	-	4.1	-	-
Prop.of commercial vehicles - 16 hr.	-	7.7	-	-
<b>WEST BOUND</b>				
A.A.D.T.	12120	11770	13050	12750
R 12 / 24 - %	74.1	75.2	72.4	70.4
R 16 / 24 - %	89.1	89.4	88.9	88.3
AM Peak Hour	0700-0800	0700-0800	0800-0900	0900-1000
One-way flow at AM peak hour	1020	1240	850	760
T - % (AM)	-	5.8	-	-
PM Peak Hour	1700-1800	1700-1800	1700-1800	1700-1800
One-way flow at PM peak hour	790	740	900	930
T - % (PM)	-	6.4	-	-
Prop.of commercial vehicles - 16 hr.	-	8	-	-

## 3. OTHER INFORMATION AND COMMENT

**Coverage (B) Station 6211**  
**Year 2012**

**4. Vehicle classification and occupancy - Monday to Friday**

Time		Class of vehicle									
		Motor	Private	Taxi	Private	PLB	Goods veh.		Non	Fr. Bus	
		Cycle	Car		LB		Light	M & H	Fr. Bus	SD	DD
0700-0800	Pro	2.6	58.0	10.2	1.1	8.0	11.4	2.6	4.8	0.0	1.4
	Ocp	1.1	1.7	2.1	7.5	10.4	1.7	1.1	12.9	0.0	51.2
0800-0900 Peak hour	Pro	1.2	60.3	14.9	1.6	4.2	9.0	1.6	6.4	0.0	0.9
	Ocp	1.2	1.7	1.8	4.0	10.5	1.9	1.6	21.9	0.0	44.5
0900-1000	Pro	0.5	54.1	14.4	1.6	5.2	15.0	3.3	4.6	0.0	1.3
	Ocp	1.0	1.4	1.6	2.0	9.4	1.7	1.4	10.3	0.0	25.7
1000-1100	Pro	1.1	52.0	16.0	0.4	6.2	17.1	3.3	2.5	0.0	1.4
	Ocp	1.0	1.3	1.7	1.0	7.5	1.5	1.2	13.1	0.0	19.8
1100-1200	Pro	1.2	49.0	9.7	0.4	8.2	22.6	4.7	3.1	0.0	1.2
	Ocp	1.0	1.4	1.6	10.0	7.4	1.7	1.5	11.1	0.0	23.3
1200-1300	Pro	1.5	50.9	16.7	2.5	6.5	14.2	4.0	2.5	0.0	1.1
	Ocp	1.3	1.5	2.1	3.0	11.1	1.6	1.1	16.6	0.0	30.7
1300-1400	Pro	1.3	52.9	10.0	1.7	8.0	16.4	5.4	3.0	0.0	1.3
	Ocp	1.0	1.5	1.7	1.4	11.0	2.0	1.5	12.8	0.0	19.3
1400-1500	Pro	1.5	50.1	15.3	1.1	6.0	17.2	4.5	3.0	0.0	1.3
	Ocp	1.0	1.6	1.5	2.3	12.9	1.7	1.0	24.0	0.0	14.3
1500-1600	Pro	2.3	51.0	14.4	1.3	6.0	14.8	4.7	4.0	0.0	1.3
	Ocp	1.0	1.4	1.6	3.3	10.2	1.9	1.2	15.4	0.0	21.6
1600-1700	Pro	2.3	49.5	13.9	3.0	6.3	14.5	4.6	4.6	0.0	1.3
	Ocp	1.0	1.5	2.0	3.2	9.4	2.0	1.1	18.9	0.0	27.7
1700-1800	Pro	1.2	54.5	13.6	2.1	5.9	13.6	1.8	6.2	0.0	1.3
	Ocp	1.0	1.6	2.2	3.4	13.2	1.9	1.3	10.8	0.0	51.3
1800-1900	Pro	2.0	64.4	14.3	0.8	5.3	7.6	0.3	4.6	0.0	0.8
	Ocp	1.0	1.4	2.0	1.7	14.0	1.7	1.0	23.1	0.0	48.7
1900-2000	Pro	2.7	63.5	16.3	0.0	5.7	6.8	0.0	4.1	0.0	0.9
	Ocp	1.2	1.4	2.0	0.0	11.2	1.3	0.0	19.6	0.0	25.9
2000-2100	Pro	2.4	64.9	13.0	0.0	8.2	6.5	0.0	3.8	0.0	1.1
	Ocp	1.1	1.6	1.5	0.0	9.5	1.5	0.0	6.6	0.0	15.5
2100-2200	Pro	2.2	61.7	17.5	0.0	7.8	4.5	1.1	4.1	0.0	1.2
	Ocp	1.0	1.6	2.2	0.0	10.1	1.4	1.0	18.5	0.0	11.2
2200-2300	Pro	0.9	61.7	21.6	0.0	9.2	2.8	0.5	1.8	0.0	1.5
	Ocp	1.0	1.9	1.7	0.0	8.5	1.3	1.0	10.8	0.0	10.4
16 hours	Pro	1.7	56.6	14.4	1.1	6.5	11.9	2.5	4.2	0.0	1.2
	Ocp	1.1	1.5	1.9	3.3	10.4	1.7	1.3	16.1	0.0	28.8

**Legend**

- Pro.** Proportion of vehicles in % (Sum may not add up to 100% due to figure rounding)
- Ocp.** Average occupancy of vehicles
- M&H** Medium and Heavy