

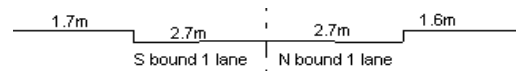
YEAR 2012

COVERAGE (B) STATION 6212

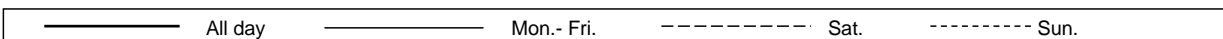
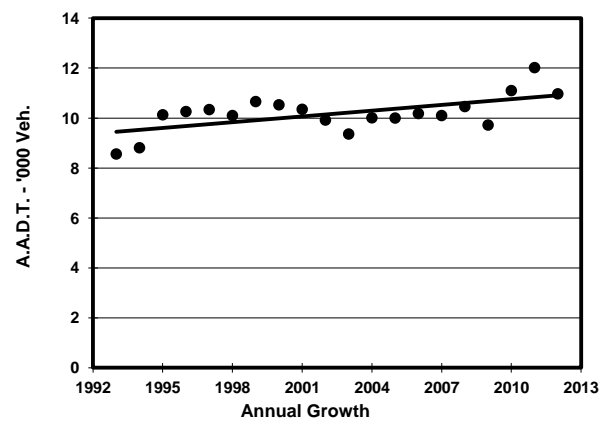
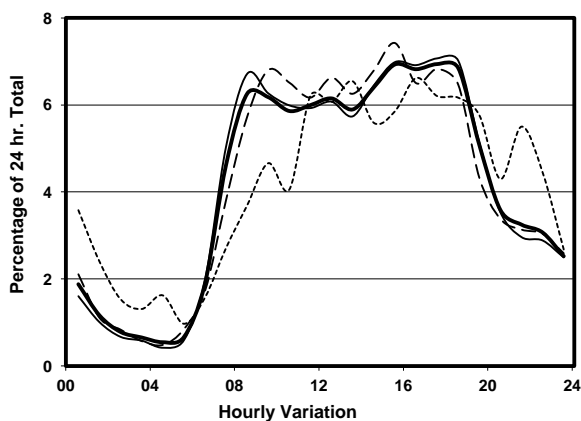
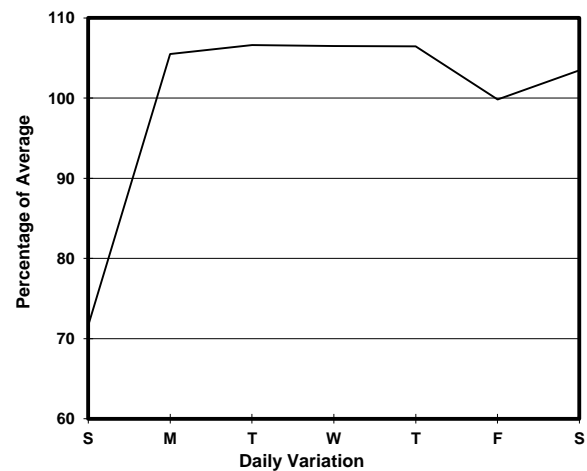
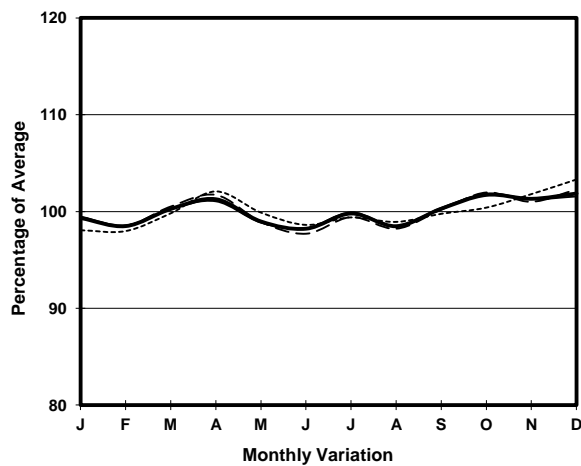
ROAD NETWORK MAJOR

ROAD TYPE RURAL ROAD

LINK FAN KAM RD (from KAM TIN RD to CASTLE PEAK RD)



1. TRAFFIC FLOW VARIATION AND GROWTH



2. TRAFFIC CHARACTERISTICS (BY DIRECTION)

Parameter	All - Day	Mon. - Fri.	Sat.	Sun.
SOUTH BOUND				
A.A.D.T.	5610	6010	6050	3750
R 12 / 24 - %	75.5	76.9	75.7	63.5
R 16 / 24 - %	89.4	90.1	89	84.4
AM Peak Hour	0800-0900	0800-0900	0900-1000	0900-1000
One-way flow at AM peak hour	380	440	420	170
T - % (AM)	-	11.5	-	-
PM Peak Hour	1700-1800	1700-1800	1700-1800	1700-1800
One-way flow at PM peak hour	390	420	400	250
T - % (PM)	-	11.1	-	-
Prop.of commercial vehicles - 16 hr.	-	11	-	-
NORTH BOUND				
A.A.D.T.	5360	5680	5470	4240
R 12 / 24 - %	74.3	75.3	76.1	65.1
R 16 / 24 - %	90.4	91.3	90.6	84.3
AM Peak Hour	0900-1000	0900-1000	0900-1000	0900-1000
One-way flow at AM peak hour	330	360	360	200
T - % (AM)	-	8.2	-	-
PM Peak Hour	1600-1700	1600-1700	1700-1800	1800-1900
One-way flow at PM peak hour	380	410	380	300
T - % (PM)	-	9.3	-	-
Prop.of commercial vehicles - 16 hr.	-	8.1	-	-

3. OTHER INFORMATION AND COMMENT

4. Vehicle classification and occupancy - Monday to Friday

Time		Class of vehicle									
		Motor	Private	Taxi	Private	PLB	Goods veh.		Non	Fr. Bus	
		Cycle	Car		LB		Light	M & H	Fr. Bus	SD	DD
0700-0800	Pro	2.0	35.0	19.0	5.0	6.0	19.0	8.0	4.0	0.8	1.3
	Ocp	1.5	1.5	1.9	4.0	14.3	1.7	1.3	17.0	28.7	53.4
0800-0900	Pro	2.0	47.0	11.9	2.7	4.0	20.5	9.3	1.3	0.5	0.8
	Ocp	1.0	1.4	2.1	2.5	15.5	1.4	1.5	9.0	32.7	27.6
0900-1000	Pro	3.1	49.5	17.1	0.6	3.7	16.5	7.9	0.6	0.5	0.6
	Ocp	1.0	1.2	1.2	1.0	12.7	1.3	1.2	2.0	12.0	25.3
1000-1100	Pro	0.8	35.5	9.1	0.0	3.3	36.3	14.0	0.0	0.0	1.0
	Ocp	1.0	1.4	1.6	0.0	10.8	1.6	1.1	0.0	0.0	11.0
1100-1200	Pro	0.8	32.7	6.2	0.8	3.9	45.9	8.6	0.0	0.6	0.6
	Ocp	1.0	1.4	1.5	1.0	9.0	1.5	1.1	0.0	12.3	13.3
1200-1300	Pro	0.6	41.2	13.5	4.3	4.3	28.9	4.9	1.2	0.3	0.6
	Ocp	2.0	1.4	1.6	5.4	8.3	1.5	1.0	11.5	23.5	13.0
1300-1400	Pro	0.0	48.1	12.0	0.0	1.6	27.3	9.6	0.0	0.8	0.6
	Ocp	0.0	1.4	1.6	0.0	11.0	1.4	1.3	0.0	14.5	12.3
1400-1500	Pro	0.0	38.2	15.7	0.0	2.0	32.1	10.9	0.0	0.2	0.9
	Ocp	0.0	1.3	1.7	0.0	14.0	1.6	1.3	0.0	15.0	12.8
1500-1600	Pro	1.2	38.7	12.9	1.2	1.2	34.0	10.0	0.0	0.6	0.4
	Ocp	1.0	1.5	1.4	3.0	14.5	1.3	1.2	0.0	20.3	16.0
1600-1700	Pro	0.0	50.7	5.6	2.1	1.4	30.3	7.0	1.4	0.5	0.9
	Ocp	0.0	1.5	1.8	4.0	9.5	1.4	1.3	17.0	19.0	31.4
1700-1800 Peak hour	Pro	2.1	50.7	9.0	0.0	2.8	26.4	6.9	0.7	0.7	0.7
	Ocp	1.3	1.4	1.8	0.0	15.3	1.4	1.1	3.0	35.8	29.0
1800-1900	Pro	1.7	57.4	10.0	0.6	5.0	17.8	6.1	0.6	0.1	0.7
	Ocp	1.0	1.5	1.5	1.0	13.9	1.6	1.1	7.0	56.0	41.0
1900-2000	Pro	0.0	69.2	7.1	1.8	6.2	8.9	4.4	0.9	0.7	0.9
	Ocp	0.0	1.2	1.5	1.5	14.1	1.1	1.4	12.0	21.3	36.0
2000-2100	Pro	0.0	56.5	23.5	2.4	4.7	9.4	2.4	0.0	0.6	0.6
	Ocp	0.0	1.2	1.5	2.0	9.5	1.3	1.0	0.0	10.0	25.5
2100-2200	Pro	1.4	54.7	18.7	1.4	5.8	14.4	1.4	0.0	0.7	1.4
	Ocp	1.0	1.3	1.4	1.0	9.3	1.2	1.0	0.0	22.5	19.0
2200-2300	Pro	4.9	56.0	21.4	0.0	3.3	8.2	3.3	0.0	1.6	1.2
	Ocp	1.3	1.3	1.5	0.0	8.0	1.0	1.0	0.0	10.8	11.0
16 hours	Pro	1.2	46.9	12.6	1.4	3.5	24.8	7.6	0.7	0.5	0.8
	Ocp	1.2	1.4	1.6	3.3	12.2	1.4	1.2	11.9	21.1	24.8

Legend

Pro. Proportion of vehicles in % (Sum may not add up to 100% due to figure rounding)
Ocp. Average occupancy of vehicles
M&H Medium and Heavy