

YEAR 2012

COVERAGE (B) STATION 6213

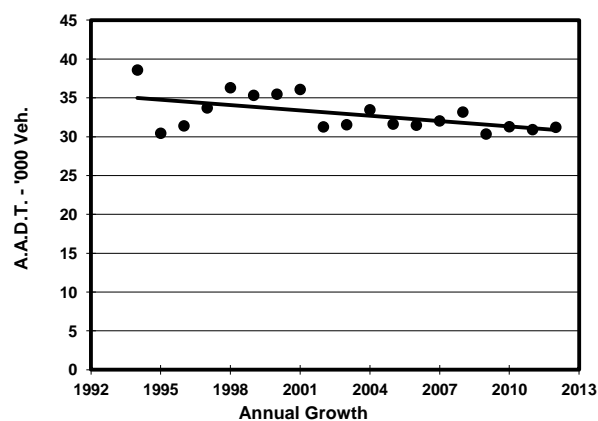
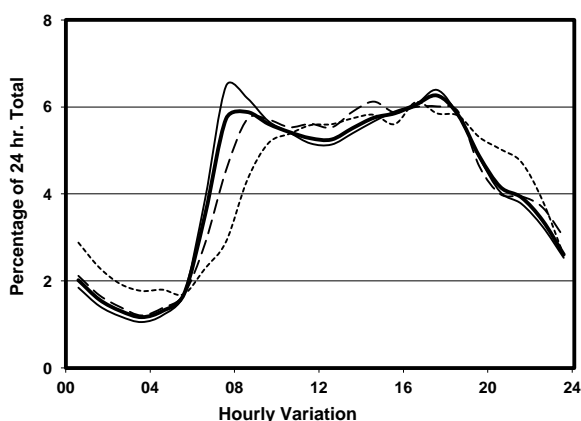
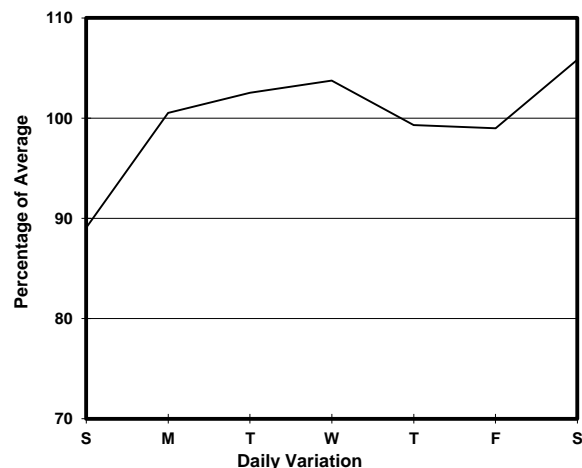
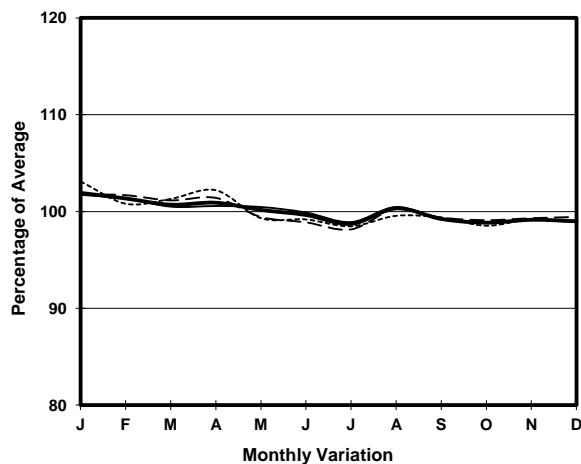
ROAD NETWORK MAJOR

ROAD TYPE RURAL TRUNK ROAD

LINK CASTLE PEAK RD - HUNG SHUI KIU (from TIN HA RD to LAM TEI INT)



1. TRAFFIC FLOW VARIATION AND GROWTH



2. TRAFFIC CHARACTERISTICS (BY DIRECTION)

Parameter	All - Day	Mon. - Fri.	Sat.	Sun.
SOUTH BOUND				
A.A.D.T.	15540	15820	16470	13800
R 12 / 24 - %	70.6	71.8	69.9	64.7
R 16 / 24 - %	85.4	86	85.1	82.4
AM Peak Hour	0800-0900	0700-0800	0800-0900	0900-1000
One-way flow at AM peak hour	1020	1180	1050	780
T - % (AM)	-	29.2	-	-
PM Peak Hour	1700-1800	1700-1800	1800-1900	1800-1900
One-way flow at PM peak hour	910	950	980	800
T - % (PM)	-	12.7	-	-
Prop.of commercial vehicles - 16 hr.	-	18.5	-	-
NORTH BOUND				
A.A.D.T.	15670	15880	16730	14220
R 12 / 24 - %	66.3	66.8	67	63.1
R 16 / 24 - %	84.1	84.3	84.2	83.1
AM Peak Hour	0800-0900	0700-0800	0900-1000	0900-1000
One-way flow at AM peak hour	820	870	910	670
T - % (AM)	-	32.9	-	-
PM Peak Hour	1700-1800	1700-1800	1700-1800	1600-1700
One-way flow at PM peak hour	1040	1080	1060	940
T - % (PM)	-	25.5	-	-
Prop.of commercial vehicles - 16 hr.	-	20.8	-	-

3. OTHER INFORMATION AND COMMENT

4. Vehicle classification and occupancy - Monday to Friday

Time		Class of vehicle									
		Motor	Private	Taxi	Private	PLB	Goods veh.		Non	Fr. Bus	
		Cycle	Car		LB		Light	M & H	Fr. Bus	SD	DD
0700-0800 Peak hour	Pro	2.8	29.3	14.0	1.0	2.3	20.0	20.5	7.8	0.7	1.6
	Ocp	1.2	1.7	1.8	8.3	11.2	1.5	1.1	6.9	18.5	36.6
0800-0900	Pro	1.2	44.1	14.5	1.2	2.5	16.8	14.7	3.5	0.8	0.8
	Ocp	1.0	1.4	1.5	5.5	11.5	1.6	1.1	5.5	13.1	45.3
0900-1000	Pro	1.1	30.6	16.2	0.9	2.3	24.5	20.9	1.8	0.7	1.0
	Ocp	1.2	1.4	1.4	1.0	9.4	1.6	1.2	3.5	13.4	12.4
1000-1100	Pro	0.0	34.8	12.4	1.8	3.6	24.0	20.1	1.3	1.0	1.0
	Ocp	0.0	1.5	1.7	2.1	7.4	1.5	1.1	2.2	16.5	10.0
1100-1200	Pro	0.9	29.4	15.7	0.9	3.7	22.2	24.2	1.1	0.8	1.1
	Ocp	1.0	1.5	1.5	2.3	9.8	1.5	1.2	5.3	13.4	8.0
1200-1300	Pro	1.4	27.5	19.4	1.2	2.9	18.2	25.2	2.3	0.9	1.1
	Ocp	1.0	1.5	1.5	4.5	6.1	1.6	1.2	5.6	13.7	9.3
1300-1400	Pro	0.0	33.1	21.5	1.2	2.5	22.0	16.3	2.0	0.7	0.8
	Ocp	0.0	1.6	1.6	1.4	5.4	1.5	1.1	5.1	13.5	7.6
1400-1500	Pro	0.7	33.6	13.9	0.5	2.9	21.4	23.1	2.2	0.7	1.0
	Ocp	1.0	1.5	1.5	1.0	7.3	1.4	1.1	4.6	13.3	7.3
1500-1600	Pro	0.0	32.5	20.8	1.9	4.4	20.0	16.7	1.9	0.8	0.9
	Ocp	0.0	1.6	1.7	3.9	8.5	1.5	1.1	2.1	13.6	7.5
1600-1700	Pro	1.5	30.3	21.6	1.0	2.2	22.6	15.7	3.5	0.8	0.8
	Ocp	1.0	1.4	1.3	3.0	9.7	1.6	1.1	4.4	21.4	10.2
1700-1800	Pro	1.9	34.1	18.1	1.3	2.2	22.9	14.7	3.5	0.8	0.6
	Ocp	1.0	1.5	1.5	1.8	10.9	1.5	1.3	4.6	17.5	15.1
1800-1900	Pro	1.4	50.3	17.3	1.1	2.5	14.1	8.7	3.0	0.8	0.9
	Ocp	1.0	1.5	1.6	1.4	13.1	1.3	1.1	7.7	16.8	20.5
1900-2000	Pro	2.3	58.6	16.6	0.3	2.8	10.6	3.0	4.0	0.9	1.0
	Ocp	1.0	1.5	1.9	1.0	11.2	1.3	1.1	2.2	11.9	21.5
2000-2100	Pro	3.4	53.8	20.2	1.2	3.4	7.5	3.1	4.7	1.2	1.6
	Ocp	1.2	1.4	1.6	1.5	7.7	1.3	1.1	3.9	10.5	9.1
2100-2200	Pro	1.7	51.5	27.3	0.7	4.7	8.0	1.7	2.3	0.9	1.3
	Ocp	1.0	1.5	1.7	1.0	7.5	1.5	1.0	6.6	9.6	10.2
2200-2300	Pro	1.2	44.0	35.3	0.4	5.6	6.4	2.4	2.4	1.3	1.1
	Ocp	1.0	1.6	1.6	2.0	8.8	1.4	1.0	13.0	8.6	13.7
16 hours	Pro	1.3	38.3	18.4	1.0	3.0	18.1	14.9	3.0	0.8	1.0
	Ocp	1.1	1.5	1.6	2.9	9.0	1.5	1.1	5.2	14.1	16.3

Legend

Pro. Proportion of vehicles in % (Sum may not add up to 100% due to figure rounding)
Ocp. Average occupancy of vehicles
M&H Medium and Heavy