

YEAR

2012

LINK CONTAINER PORT RD S (from N/O PMH INT to S/O PMH INT)

COVERAGE (B) STATION

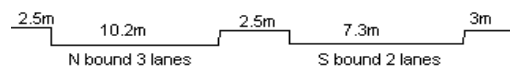
6214

ROAD NETWORK

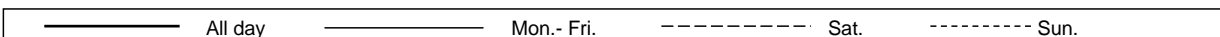
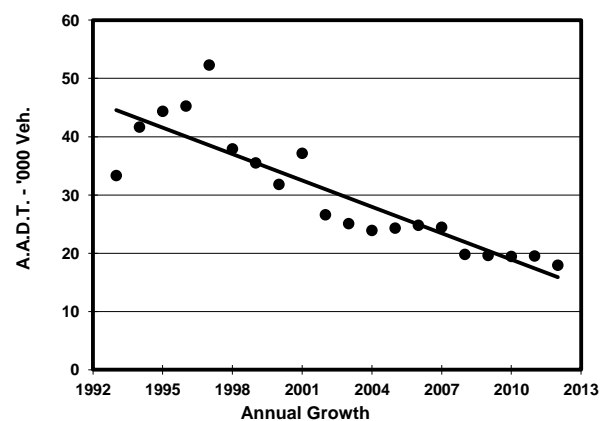
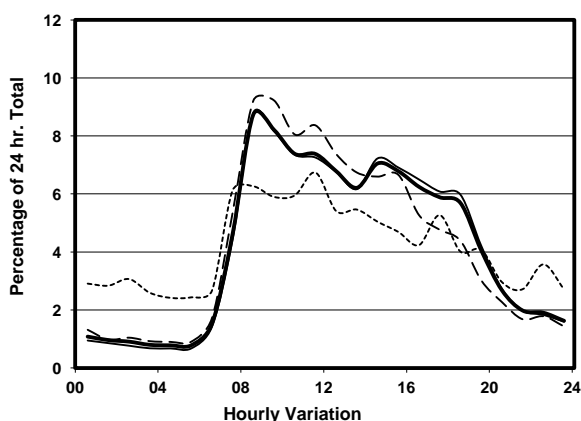
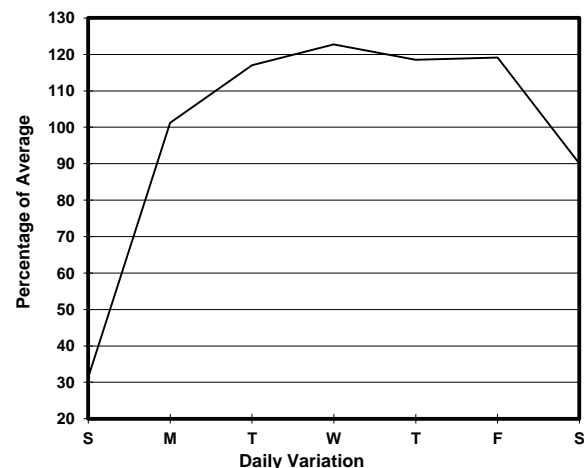
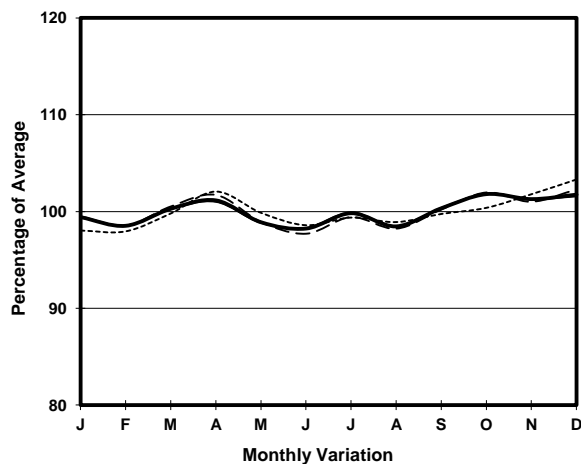
MAJOR

ROAD TYPE

LOCAL DISTRIBUTOR



## 1. TRAFFIC FLOW VARIATION AND GROWTH



## 2. TRAFFIC CHARACTERISTICS (BY DIRECTION)

Parameter	All - Day	Mon. - Fri.	Sat.	Sun.
<b>SOUTH BOUND</b>				
A.A.D.T.	8400	10160	7660	2580
R 12 / 24 - %	81.4	82	82.4	64.7
R 16 / 24 - %	91.8	92.7	90.5	77.3
AM Peak Hour	0800-0900	0800-0900	0900-1000	0800-0900
One-way flow at AM peak hour	680	820	700	170
T - % (AM)	-	47.7	-	-
PM Peak Hour	1600-1700	1600-1700	1600-1700	1700-1800
One-way flow at PM peak hour	550	700	420	150
T - % (PM)	-	53.1	-	-
Prop.of commercial vehicles - 16 hr.	-	49	-	-
<b>NORTH BOUND</b>				
A.A.D.T.	9540	11400	9110	3260
R 12 / 24 - %	80.6	81.3	81.7	65.3
R 16 / 24 - %	91.3	92.1	91	79.2
AM Peak Hour	0800-0900	0800-0900	0800-0900	0900-1000
One-way flow at AM peak hour	890	1080	870	210
T - % (AM)	-	39.8	-	-
PM Peak Hour	1600-1700	1600-1700	1600-1700	1700-1800
One-way flow at PM peak hour	570	700	470	160
T - % (PM)	-	60.3	-	-
Prop.of commercial vehicles - 16 hr.	-	53.7	-	-

## 3. OTHER INFORMATION AND COMMENT

**4. Vehicle classification and occupancy - Monday to Friday**

Time		Class of vehicle									
		Motor Cycle	Private Car	Taxi	Private LB	PLB	Goods veh.		Non Fr. Bus	Fr. Bus	
							Light	M & H		SD	DD
0700-0800	Pro	2.3	2.6	21.6	0.3	2.3	19.2	48.7	2.9	0.0	0.0
	Ocp	1.0	1.1	1.8	1.0	9.6	1.6	1.1	14.4	0.0	0.0
0800-0900 Peak hour	Pro	1.4	13.3	14.7	0.4	0.8	26.1	41.0	2.2	0.0	0.0
	Ocp	1.0	1.3	1.7	1.5	8.8	1.3	1.2	19.7	0.0	0.0
0900-1000	Pro	2.1	12.0	11.6	0.0	0.6	30.0	43.4	0.4	0.0	0.0
	Ocp	1.0	1.3	1.8	0.0	6.0	1.5	1.2	11.0	0.0	0.0
1000-1100	Pro	0.9	8.7	5.8	0.2	0.4	28.7	54.6	0.7	0.0	0.0
	Ocp	1.0	1.2	1.7	1.0	9.5	1.4	1.2	1.0	0.0	0.0
1100-1200	Pro	0.7	7.4	3.2	0.2	0.7	31.4	56.1	0.2	0.0	0.0
	Ocp	1.0	1.2	1.6	3.0	7.3	1.4	1.2	1.0	0.0	0.0
1200-1300	Pro	1.3	9.5	5.5	0.5	0.5	30.3	51.5	0.8	0.0	0.0
	Ocp	1.0	1.1	1.9	1.5	7.5	1.3	1.2	4.7	0.0	0.0
1300-1400	Pro	0.8	7.3	4.1	0.5	0.8	32.7	53.8	0.0	0.0	0.0
	Ocp	1.3	1.4	1.5	2.5	9.0	1.4	1.2	0.0	0.0	0.0
1400-1500	Pro	1.3	6.5	6.3	0.7	0.9	29.8	54.3	0.2	0.0	0.0
	Ocp	1.0	1.3	1.9	2.7	9.0	1.5	1.2	2.0	0.0	0.0
1500-1600	Pro	1.5	10.7	4.6	0.7	0.7	29.3	52.1	0.5	0.0	0.0
	Ocp	1.2	1.3	1.7	1.3	7.7	1.4	1.2	4.0	0.0	0.0
1600-1700	Pro	0.6	8.5	4.5	0.0	1.5	27.8	56.5	0.6	0.0	0.0
	Ocp	1.0	1.4	1.7	0.0	6.2	1.5	1.2	8.5	0.0	0.0
1700-1800	Pro	1.8	8.1	8.4	0.0	1.2	27.5	49.9	3.3	0.0	0.0
	Ocp	1.3	1.4	2.1	0.0	9.8	1.6	1.1	19.4	0.0	0.0
1800-1900	Pro	1.3	21.4	5.7	0.6	1.3	23.0	41.5	5.3	0.0	0.0
	Ocp	1.0	1.2	2.4	1.5	14.8	1.2	1.1	23.8	0.0	0.0
1900-2000	Pro	2.2	16.0	14.3	0.0	1.3	17.7	45.9	2.6	0.0	0.0
	Ocp	1.0	1.7	1.8	0.0	14.0	1.3	1.1	12.7	0.0	0.0
2000-2100	Pro	1.2	17.2	14.1	0.0	2.5	9.2	55.2	0.6	0.0	0.0
	Ocp	1.0	1.5	1.9	0.0	4.8	1.2	1.0	18.0	0.0	0.0
2100-2200	Pro	0.8	6.7	22.5	2.5	1.7	9.2	56.7	0.0	0.0	0.0
	Ocp	1.0	1.1	1.4	3.3	10.5	2.4	1.1	0.0	0.0	0.0
2200-2300	Pro	1.7	4.2	30.8	0.8	0.0	17.5	42.5	2.5	0.0	0.0
	Ocp	1.0	1.6	1.4	7.0	0.0	1.2	1.1	22.0	0.0	0.0
16 hours	Pro	1.4	10.0	9.4	0.4	1.0	26.5	50.1	1.3	0.0	0.0
	Ocp	1.1	1.3	1.8	2.3	8.9	1.4	1.2	16.5	0.0	0.0

**Legend**

**Pro.** Proportion of vehicles in % (Sum may not add up to 100% due to figure rounding)  
**Ocp.** Average occupancy of vehicles  
**M&H** Medium and Heavy