

YEAR 2012

COVERAGE (B) STATION 6219

ROAD NETWORK MAJOR

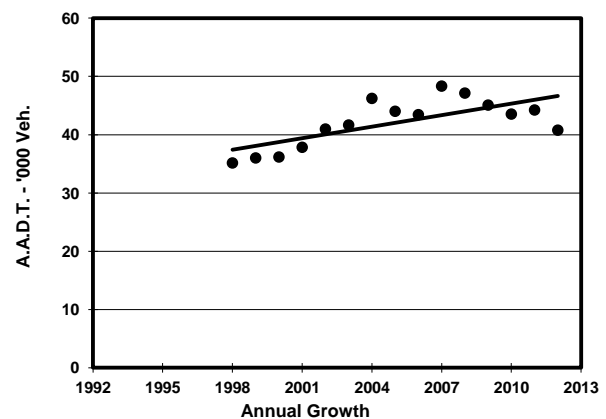
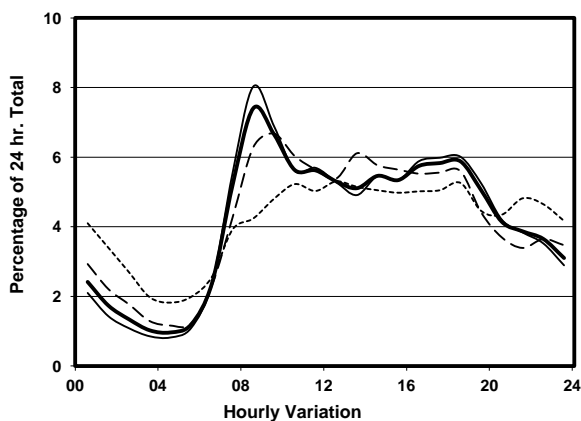
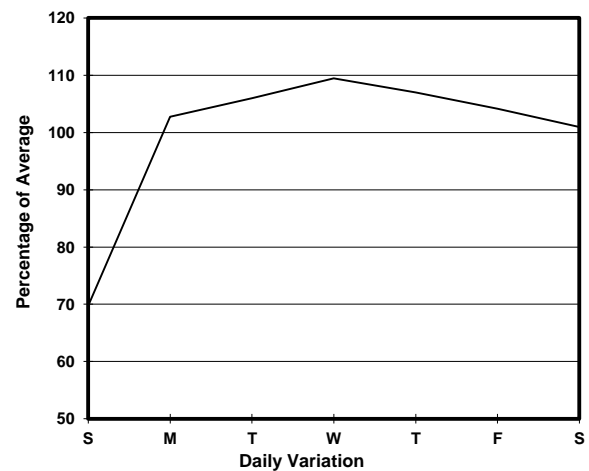
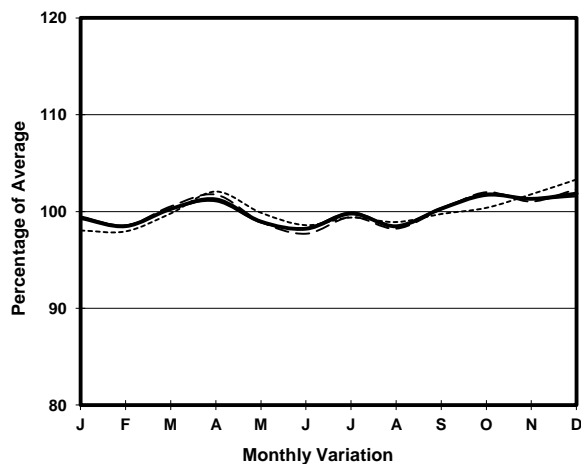
ROAD TYPE DISTRICT DISTRIBUTOR

LINK KWAI TSING RD & TSING YI S BRIDGE (from TSING YI RD to KWAI TAI RD INT)

8.8m
E bound 2 lanes

10m
W bound 3 lanes

1. TRAFFIC FLOW VARIATION AND GROWTH



— All day - - - - - Mon.- Fri. Sat. - . - . - Sun.

2. TRAFFIC CHARACTERISTICS (BY DIRECTION)

Parameter	All - Day	Mon. - Fri.	Sat.	Sun.
EAST BOUND				
A.A.D.T.	21010	22600	21100	15380
R 12 / 24 - %	69.5	70.6	69.5	61.4
R 16 / 24 - %	85.9	87.2	84	79.2
AM Peak Hour	0800-0900	0800-0900	0900-1000	0900-1000
One-way flow at AM peak hour	1610	1890	1500	800
T - % (AM)	-	25.5	-	-
PM Peak Hour	1800-1900	1700-1800	1800-1900	1700-1800
One-way flow at PM peak hour	1240	1350	1240	860
T - % (PM)	-	32.6	-	-
Prop.of commercial vehicles - 16 hr.	-	28.5	-	-

WEST BOUND				
A.A.D.T.	19770	21280	20720	13560
R 12 / 24 - %	68.8	70.7	67.6	56.4
R 16 / 24 - %	85.8	87.7	83.3	75.2
AM Peak Hour	0800-0900	0800-0900	0900-1000	0700-0800
One-way flow at AM peak hour	1410	1640	1290	620
T - % (AM)	-	29.6	-	-
PM Peak Hour	1600-1700	1600-1700	1600-1700	1600-1700
One-way flow at PM peak hour	1200	1340	1160	680
T - % (PM)	-	43.5	-	-
Prop.of commercial vehicles - 16 hr.	-	33.7	-	-

3. OTHER INFORMATION AND COMMENT

Coverage (B) Station 6219
Year 2012

4. Vehicle classification and occupancy - Monday to Friday

Time		Class of vehicle									
		Motor Cycle	Private Car	Taxi	Private LB	PLB	Goods veh.		Non Fr. Bus	Fr. Bus	
							Light	M & H		SD	DD
0700-0800	Pro	4.9	14.4	24.1	1.5	6.4	16.4	20.0	8.6	0.0	3.7
	Ocp	1.1	1.5	2.0	4.7	11.9	1.5	1.1	13.1	0.0	48.3
0800-0900 Peak hour	Pro	2.4	23.0	25.8	1.2	5.0	15.2	20.1	4.5	0.0	2.8
	Ocp	1.0	1.3	1.8	3.7	15.7	1.4	1.1	18.1	0.0	51.8
0900-1000	Pro	2.3	18.8	21.1	0.8	5.7	22.2	23.7	2.3	0.0	3.1
	Ocp	1.1	1.4	1.8	1.7	13.8	1.4	1.1	10.1	0.0	24.2
1000-1100	Pro	1.9	17.6	17.5	0.7	6.7	22.6	29.2	0.9	0.0	2.9
	Ocp	1.0	1.4	2.0	1.8	12.8	1.5	1.2	2.2	0.0	20.5
1100-1200	Pro	1.3	13.1	14.1	1.4	5.1	29.0	32.2	0.8	0.0	3.0
	Ocp	1.0	1.5	2.0	2.1	11.4	1.4	1.2	8.2	0.0	19.4
1200-1300	Pro	1.5	18.0	12.1	1.2	6.0	24.1	30.9	2.8	0.0	3.3
	Ocp	1.3	1.5	1.9	2.0	11.4	1.4	1.2	8.8	0.0	18.9
1300-1400	Pro	1.2	15.3	9.3	0.8	6.3	26.9	34.4	2.3	0.0	3.4
	Ocp	1.3	1.4	1.9	4.6	11.8	1.4	1.2	8.1	0.0	20.1
1400-1500	Pro	2.4	17.7	12.0	0.6	5.4	27.7	29.9	0.9	0.0	3.5
	Ocp	1.0	1.5	1.7	1.0	12.3	1.4	1.2	1.2	0.0	19.2
1500-1600	Pro	2.6	20.4	8.9	1.2	4.5	22.9	34.1	2.2	0.0	3.3
	Ocp	1.1	1.5	1.6	4.3	11.4	1.5	1.2	2.8	0.0	20.3
1600-1700	Pro	1.8	19.7	12.2	1.0	4.8	21.1	32.4	3.8	0.0	3.2
	Ocp	1.1	1.5	1.7	3.7	13.7	1.5	1.3	4.4	0.0	30.2
1700-1800	Pro	3.4	21.7	13.2	0.9	6.0	22.5	23.9	5.0	0.0	3.3
	Ocp	1.1	1.5	1.7	3.1	14.3	1.5	1.2	11.5	0.0	34.9
1800-1900	Pro	2.7	30.6	16.5	0.8	7.2	16.9	18.2	3.8	0.0	3.2
	Ocp	1.1	1.6	2.1	2.0	15.7	1.5	1.1	14.7	0.0	45.9
1900-2000	Pro	3.3	30.5	20.5	0.4	10.2	10.3	14.5	6.4	0.0	3.7
	Ocp	1.1	1.6	1.9	2.0	13.7	1.6	1.1	19.4	0.0	35.7
2000-2100	Pro	3.9	26.9	27.1	0.2	9.1	9.1	15.9	3.9	0.0	3.9
	Ocp	1.2	1.5	1.8	1.0	11.0	1.5	1.1	14.0	0.0	26.4
2100-2200	Pro	4.9	23.5	34.4	0.0	8.4	9.1	11.2	4.2	0.0	4.4
	Ocp	1.0	1.5	1.8	0.0	10.9	1.4	1.1	9.9	0.0	24.4
2200-2300	Pro	1.1	32.8	30.5	0.5	9.7	10.6	8.1	1.8	0.0	4.9
	Ocp	1.2	1.7	1.9	1.5	11.0	1.6	1.1	4.4	0.0	19.9
16 hours	Pro	2.6	21.3	18.4	0.9	6.5	19.5	24.1	3.5	0.0	3.4
	Ocp	1.1	1.5	1.9	3.0	12.9	1.5	1.2	12.1	0.0	29.9

Legend

- Pro.** Proportion of vehicles in % (Sum may not add up to 100% due to figure rounding)
- Ocp.** Average occupancy of vehicles
- M&H** Medium and Heavy