

LEGEND:
 **PROPOSED AT-GRADE ROAD IMPROVEMENTS**

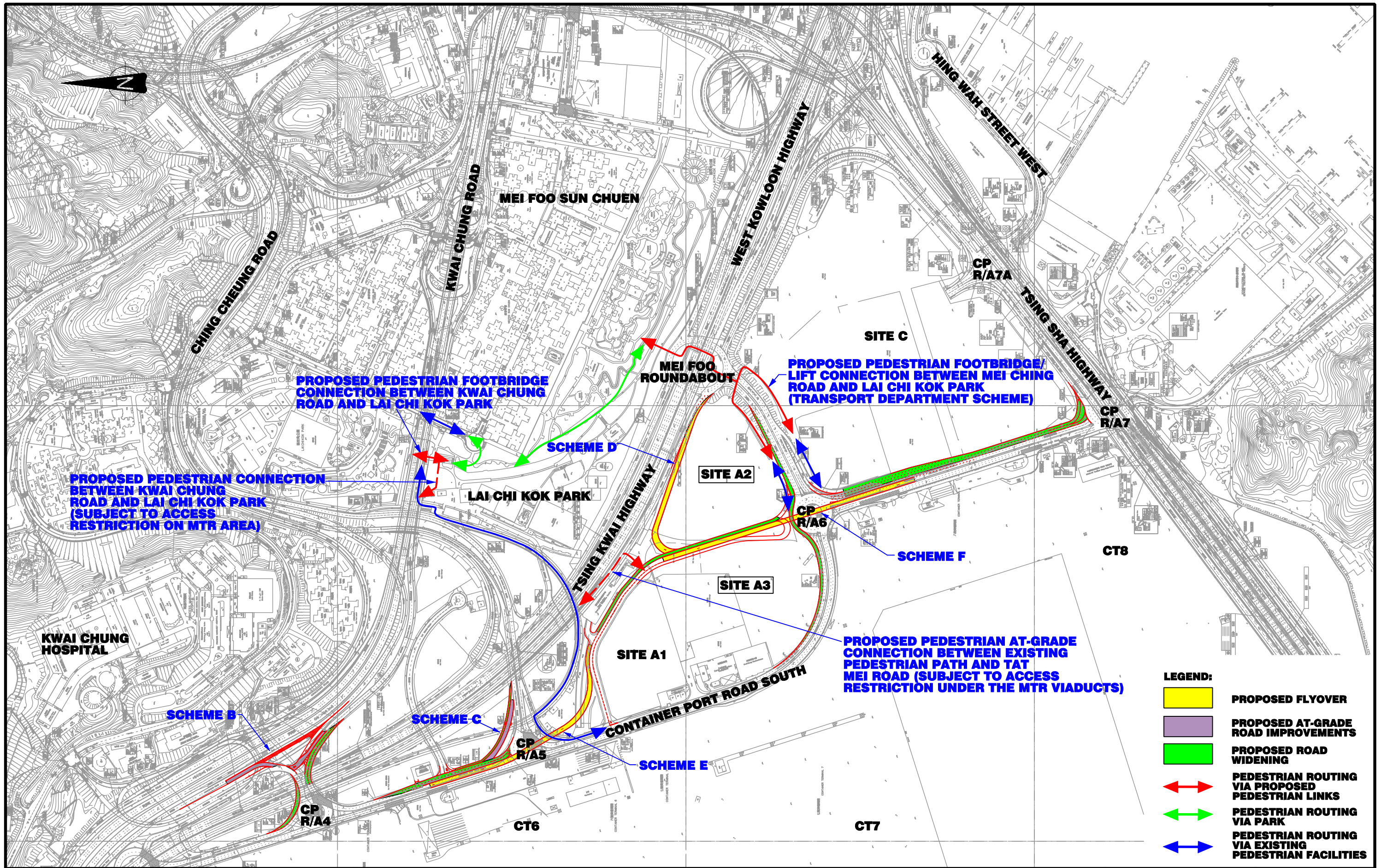
Rev.	Description	Approved	Date
A	MINOR AMENDMENT	EDK	28MAY12

ARGEEMENT NO. TD 118/2010 TRAFFIC IMPACT ASSESSMENT FOR LONG-TERM LOGISTICS DEVELOPMENT IN KWAI TSING AREA

PROPOSED IMPROVEMENT SCHEMES WITH NEW DEVELOPMENT AT SITE B2 / SITE B3 AND ADDITIONAL PARKING PROVISION

Figure No.	A1	Rev.	A
Designed By :	EYE	Scale :	1 : 6000
Checked By :	EDK	Date :	MAY. 2012
Ref. : 29151/F-EXS/A1-A.DGN/TUV/28MAY12			





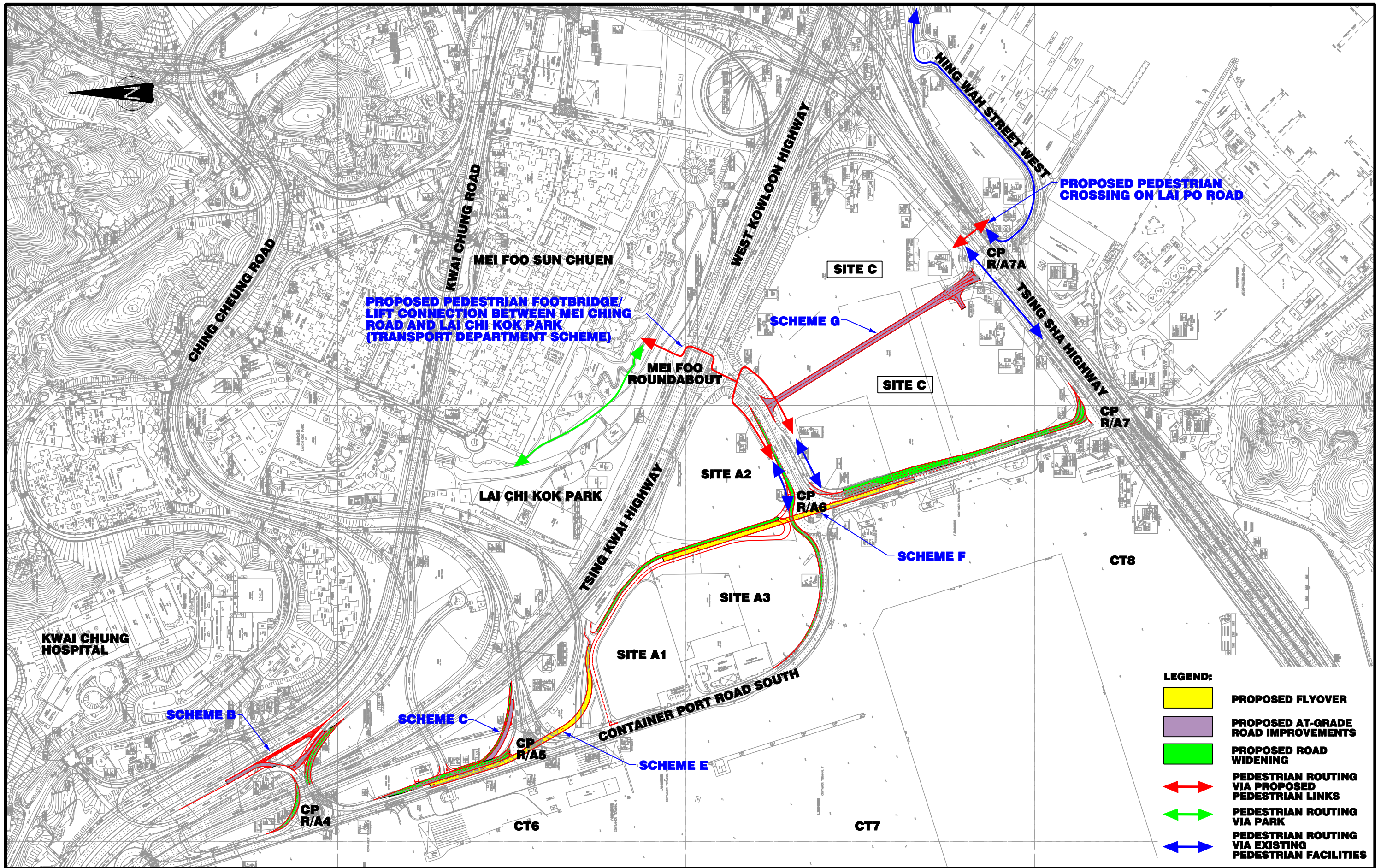
ARGEEMENT NO. TD 118/2010 TRAFFIC IMPACT ASSESSMENT FOR LONG-TERM LOGISTICS DEVELOPMENT IN KWAI TSING AREA

PROPOSED IMPROVEMENT SCHEMES WITH NEW DEVELOPMENT AT SITES A2 / A3

Rev.	Description	Approved	Date
A	MINOR AMENDMENT	EDK	28MAY12

Figure No.	A2	Rev.	A
Designed By :	EYE	Scale :	1 : 6000
Checked By :	EDK	Date :	MAY, 2012
Ref. : 29151/F-EXS/A2-A.DGN/TUV/28MAY12			





- LEGEND:**
- PROPOSED FLYOVER
 - PROPOSED AT-GRADE ROAD IMPROVEMENTS
 - PROPOSED ROAD WIDENING
 - PEDESTRIAN ROUTING VIA PROPOSED PEDESTRIAN LINKS
 - PEDESTRIAN ROUTING VIA PARK
 - PEDESTRIAN ROUTING VIA EXISTING PEDESTRIAN FACILITIES

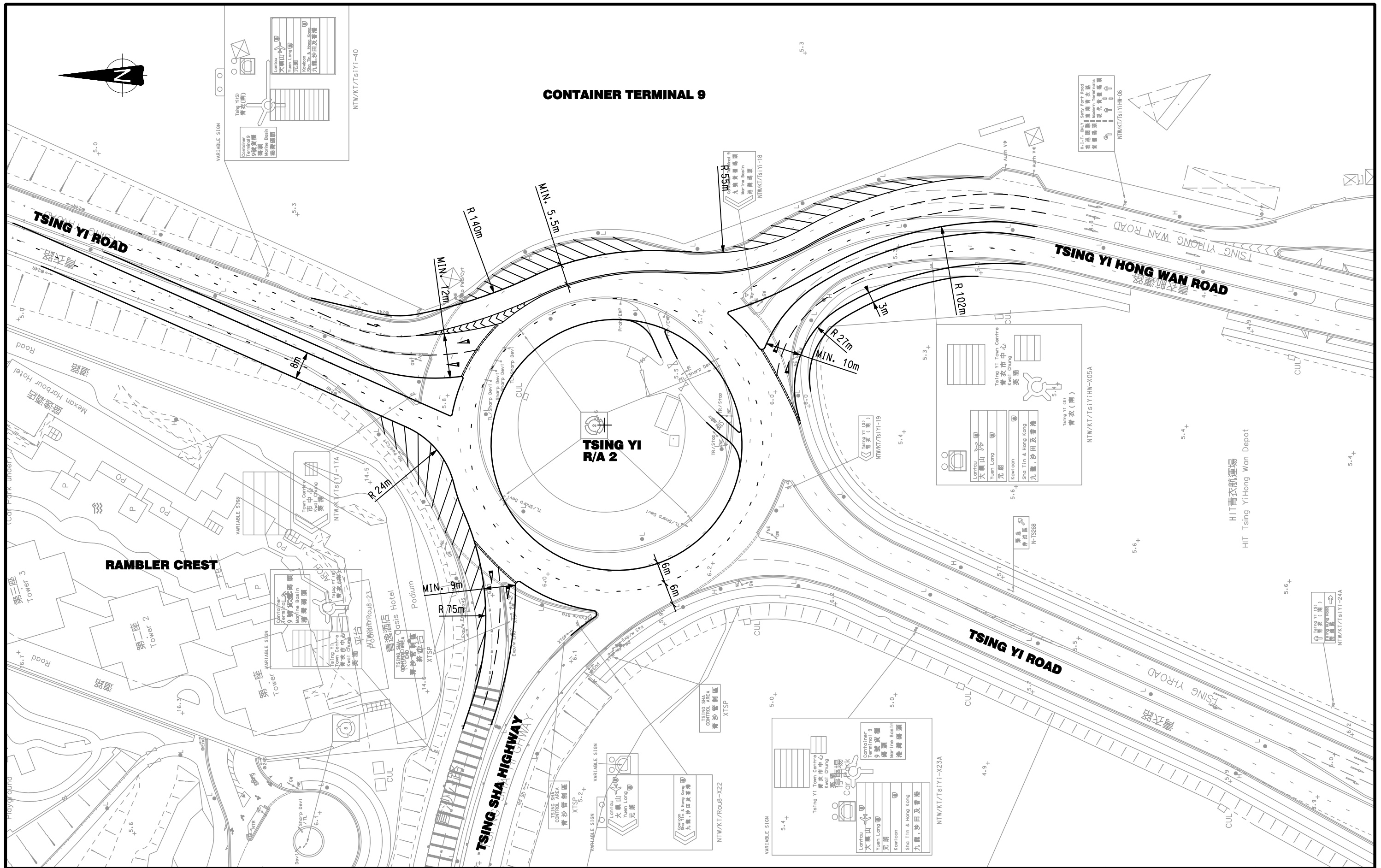
Rev.	Description	Approved	Date
A	MINOR AMENDMENT	EDK	28MAY12

ARGEEMENT NO. TD 118/2010 TRAFFIC IMPACT ASSESSMENT FOR LONG-TERM LOGISTICS DEVELOPMENT IN KWAI TSING AREA

PROPOSED IMPROVEMENT SCHEMES WITH NEW DEVELOPMENT AT SITE C

Figure No.	A3	Rev.	A
Designed By :	EYE	Scale :	1 : 6000
Checked By :	EDK	Date :	MAY, 2012
Ref. : 29151/F-EXS/A3-A.DGN/TUV/28MAY12			





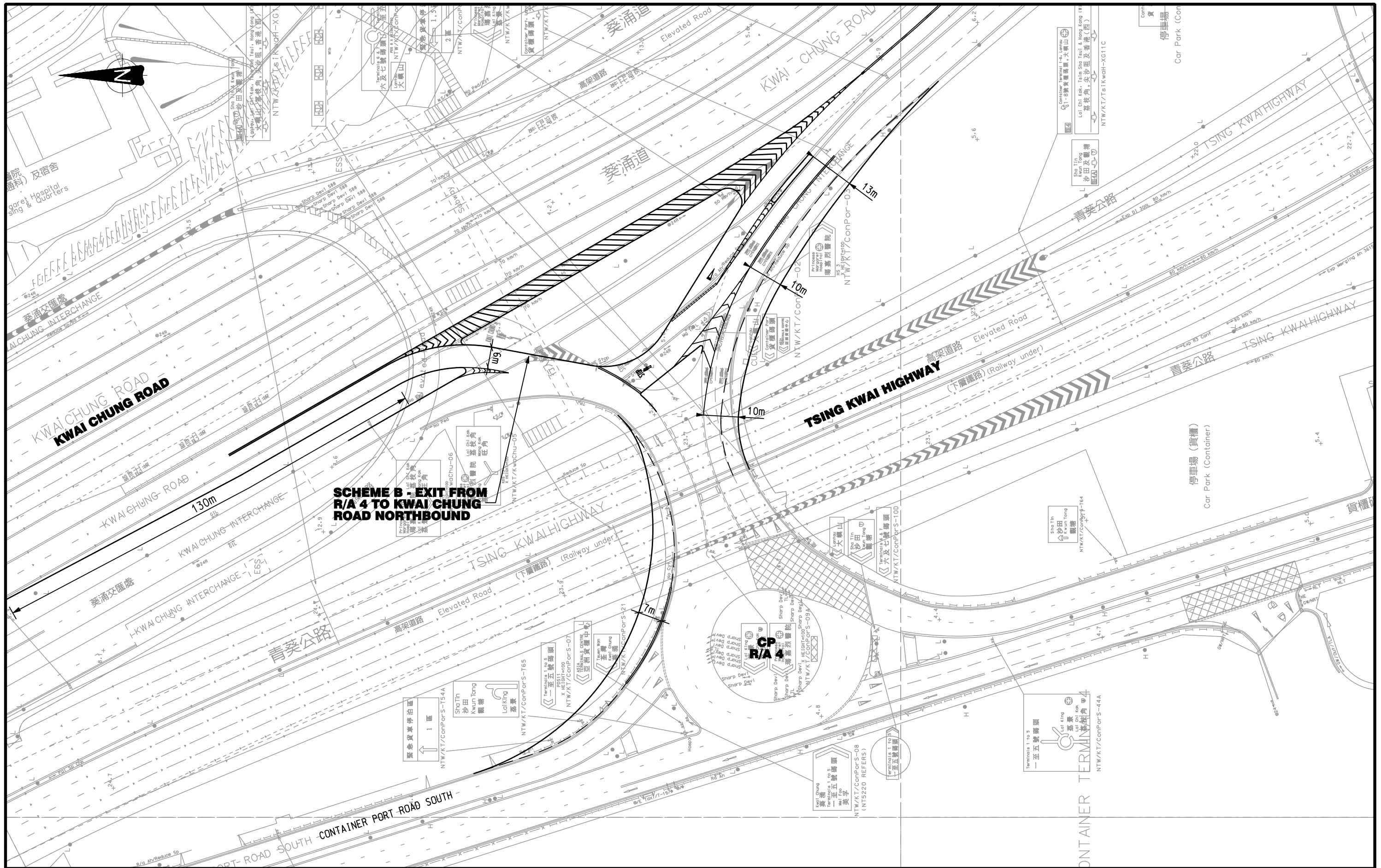
AGREEMENT NO. TD 118/2010 TRAFFIC IMPACT ASSESSMENT FOR LONG-TERM LOGISTICS DEVELOPMENT IN KWAI TSING AREA

**PROPOSED IMPROVEMENT SCHEME A
(EXCLUSIVE LEFT-TURN LANE AT TY R/A 2)**

Rev.	Description	Approved	Date
A	MINOR AMENDMENT	EDK	28MAY12

Figure No.	A4	Rev.	A
Designed By:	EYE	Scale:	1 : 1000
Checked By:	EDK	Date:	MAY. 2012
Ref.: 29151/F-EXS/A4-A.DGN/TUV/28MAY12			





SCHEME B - EXIT FROM R/A 4 TO KWAI CHUNG ROAD NORTHBOUND

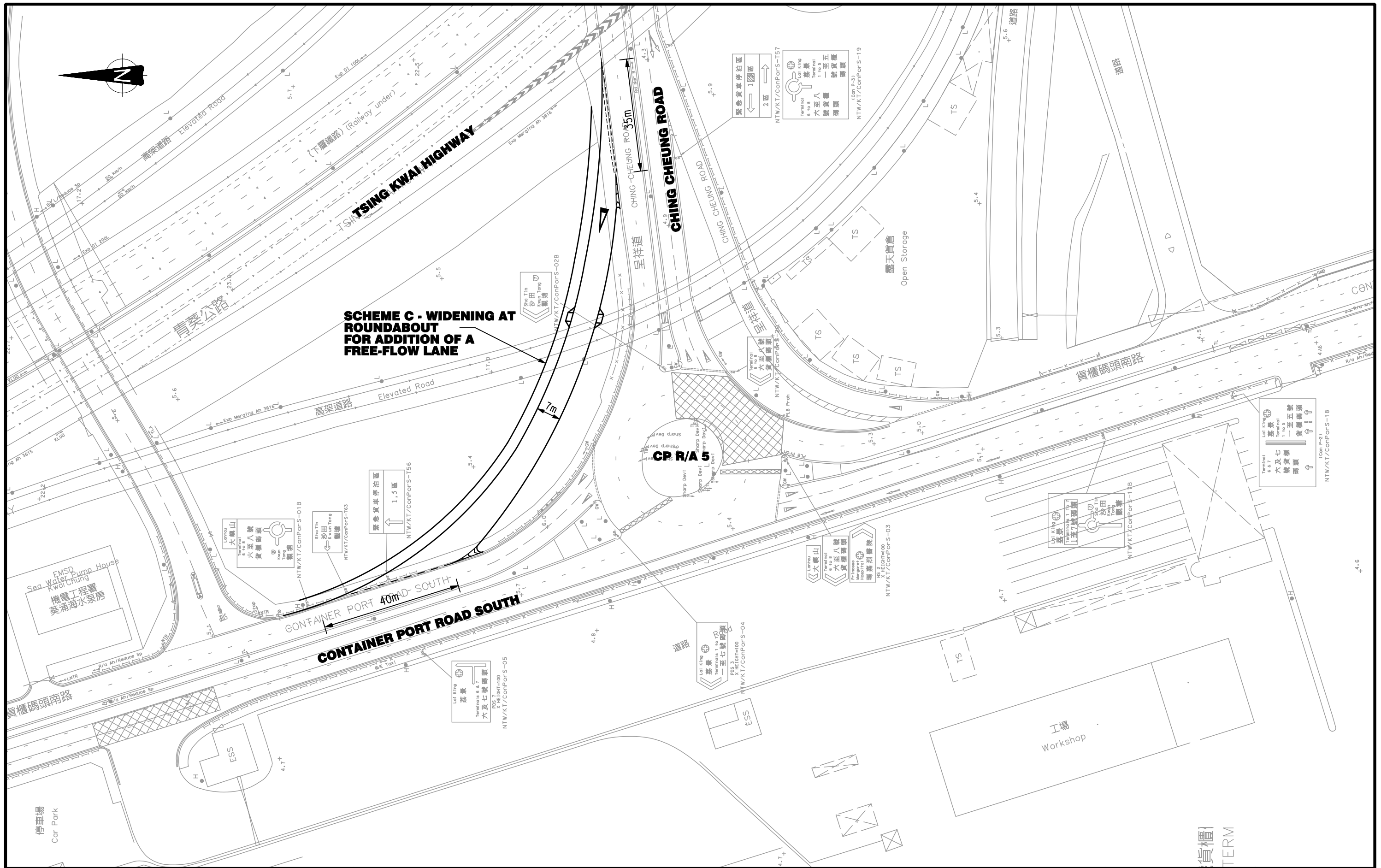
AGREEMENT NO. TD 118/2010 TRAFFIC IMPACT ASSESSMENT FOR LONG-TERM LOGISTICS DEVELOPMENT IN KWAI TSING AREA

**PROPOSED IMPROVEMENT SCHEME B
(WIDENING & NEW EXIT SLIP ROAD AT CP R/A 4)**

Rev.	Description	Approved	Date
A	MINOR AMENDMENT	EDK	28MAY12

Figure No.	A5	Rev.	A
Designed By:	EYE	Scale:	1 : 1000
Checked By:	EDK	Date:	MAY. 2012
Ref.: 29151/F-EXS/A5-A.DGN/TUV/28MAY12			





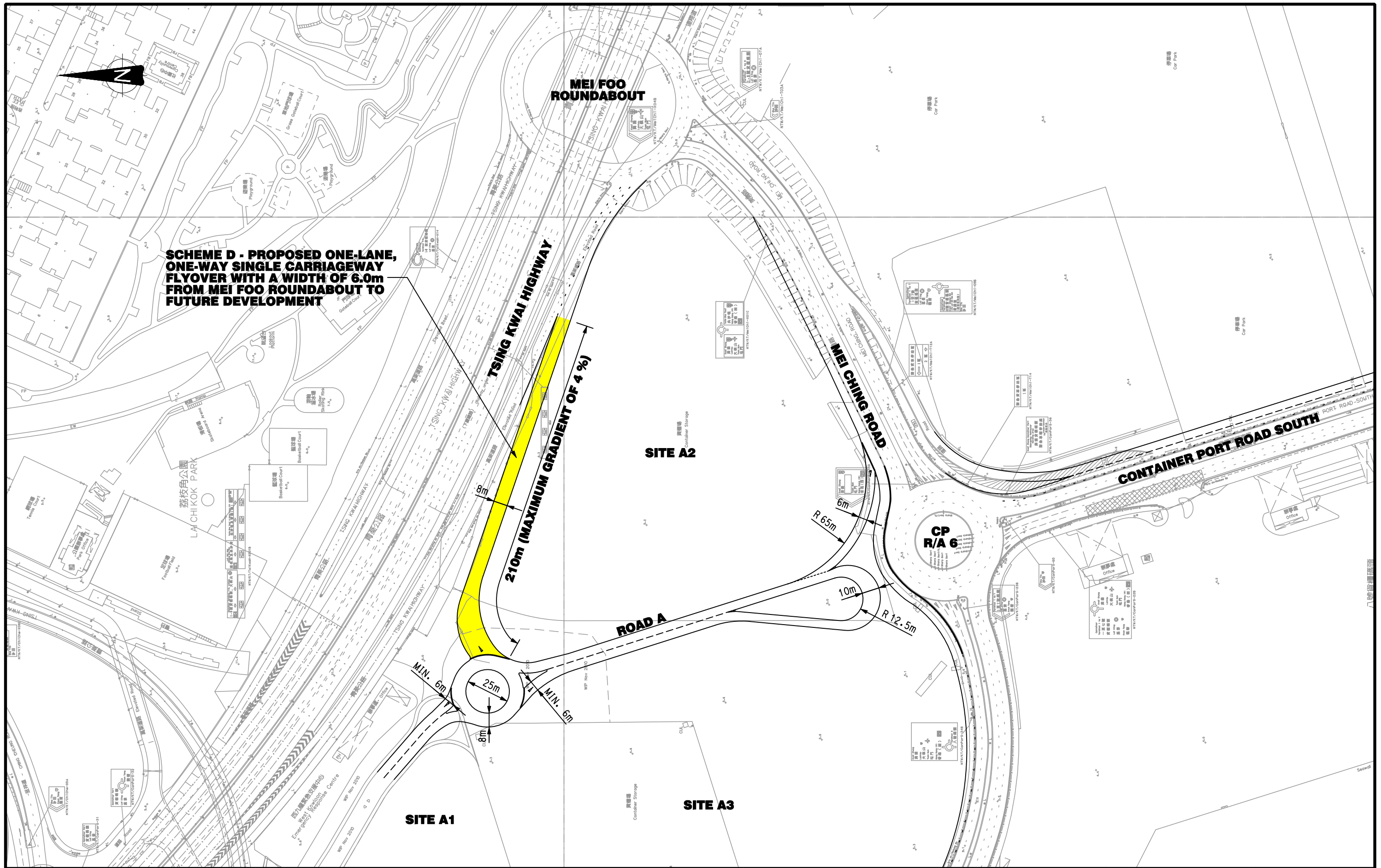
AGREEMENT NO. TD 118/2010 TRAFFIC IMPACT ASSESSMENT FOR LONG-TERM LOGISTICS DEVELOPMENT IN KWAI TSING AREA

**PROPOSED IMPROVEMENT SCHEME C
(EXCLUSIVE LEFT-TURN LANE AT CP R/A 5)**

Rev.	Description	Approved	Date
A	MINOR AMENDMENT	EDK	28MAY12

Figure No.	A6	Rev.	A
Designed By:	EYE	Scale:	1 : 1000
Checked By:	EDK	Date:	MAY. 2012
Ref.: 29151/F-EXS/A6-A.DGN/TUV/28MAY12			





SCHEME D - PROPOSED ONE-LANE, ONE-WAY SINGLE CARRIAGEWAY FLYOVER WITH A WIDTH OF 6.0m FROM MEI FOO ROUNDABOUT TO FUTURE DEVELOPMENT

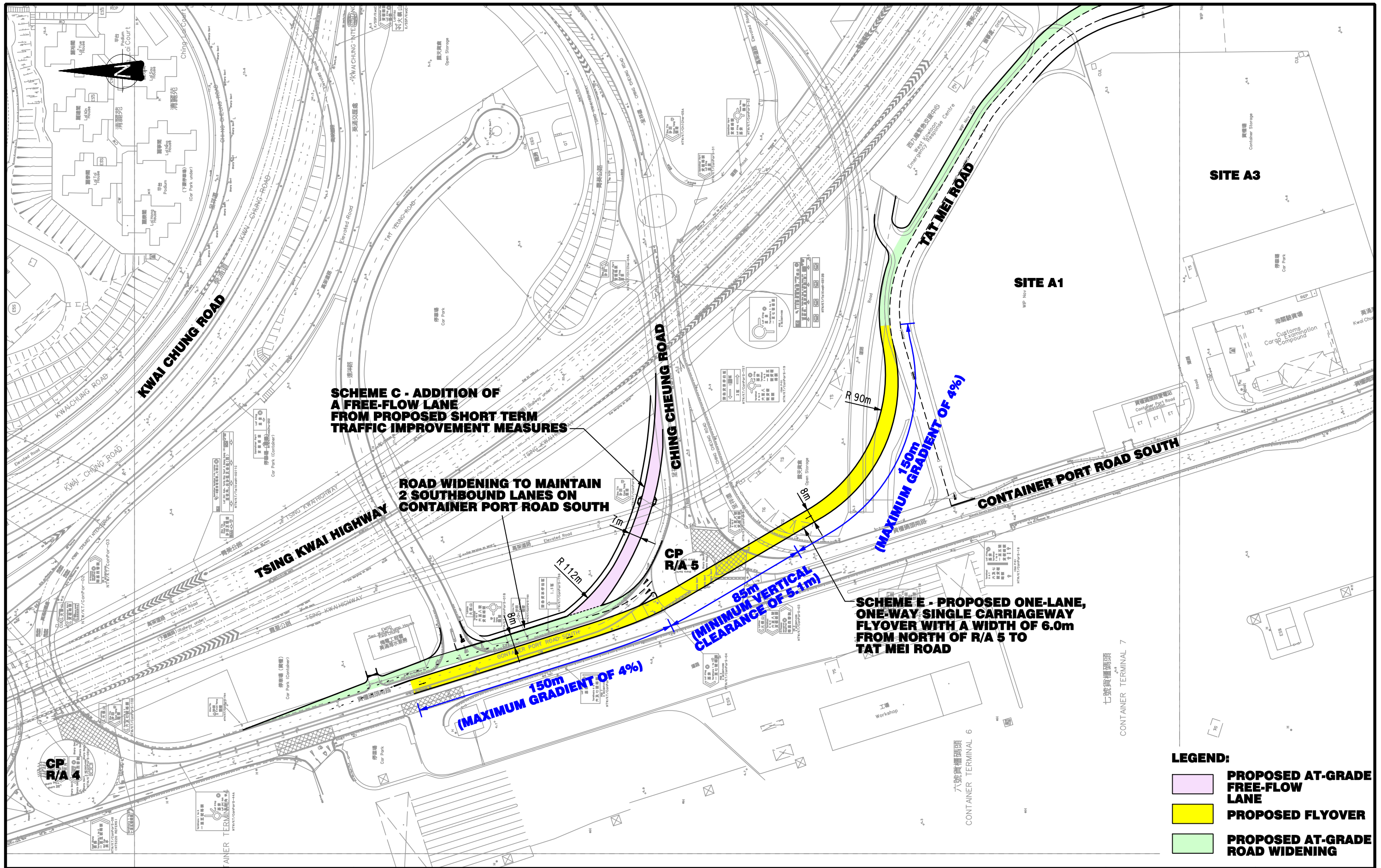
AGREEMENT NO. TD 118/2010 TRAFFIC IMPACT ASSESSMENT FOR LONG-TERM LOGISTICS DEVELOPMENT IN KWAI TSING AREA

**PROPOSED IMPROVEMENT SCHEME D
(NEW ELEVATED SLIP ROAD FROM MEI FOO ROUNDABOUT
TO JOIN NEW ROAD A BETWEEN SITES A2 & A3)**

Rev.	Description	Approved	Date
A	MINOR AMENDMENT	EDK	28MAY12

Figure No.	A7	Rev.	A
Designed By :	EYE	Scale :	1 : 2000
Checked By :	EDK	Date :	MAY. 2012
Ref. : 29151/F-EXS/A7-A.DGN/TUV/28MAY12			





SCHEME C - ADDITION OF A FREE-FLOW LANE FROM PROPOSED SHORT TERM TRAFFIC IMPROVEMENT MEASURES

ROAD WIDENING TO MAINTAIN 2 SOUTHBOUND LANES ON CONTAINER PORT ROAD SOUTH

SCHEME E - PROPOSED ONE-LANE, ONE-WAY SINGLE CARRIAGEWAY FLYOVER WITH A WIDTH OF 6.0m FROM NORTH OF R/A 5 TO TAT MEI ROAD

- LEGEND:**
- PROPOSED AT-GRADE FREE-FLOW LANE**
 - PROPOSED FLYOVER**
 - PROPOSED AT-GRADE ROAD WIDENING**

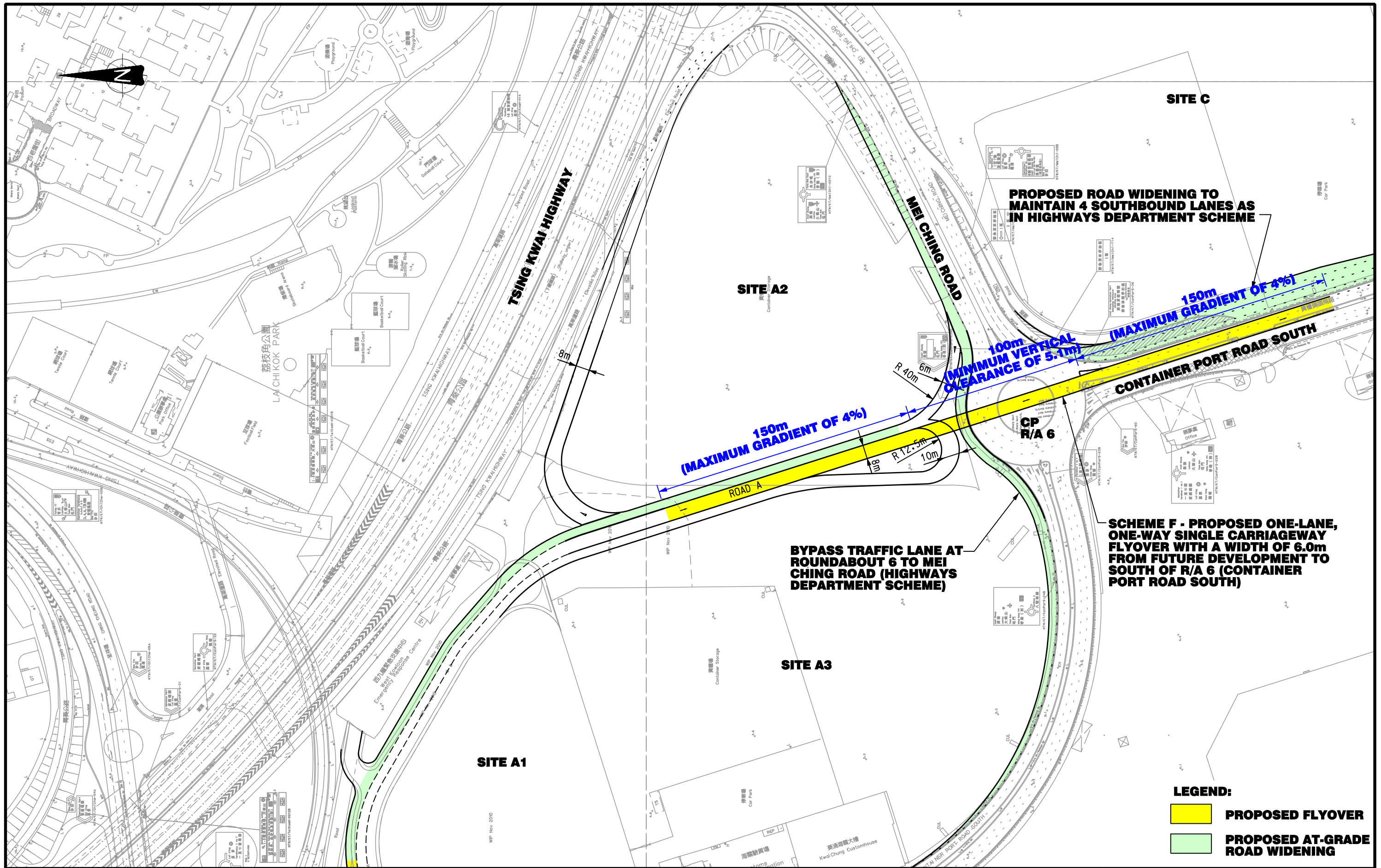
AGREEMENT NO. TD 118/2010 TRAFFIC IMPACT ASSESSMENT FOR LONG-TERM LOGISTICS DEVELOPMENT IN KWAI TSING AREA

**PROPOSED IMPROVEMENT SCHEME E
(NEW FLYOVER AT CP R/A 5)**

Rev.	Description	Approved	Date
A	MINOR AMENDMENT	EDK	28MAY12

Figure No.	A8	Rev.	A
Designed By:	EYE	Scale:	1 : 2000
Checked By:	EDK	Date:	MAY. 2012
Ref.: 29151/F-EXS/A8-A.DGN/TUV/28MAY12			





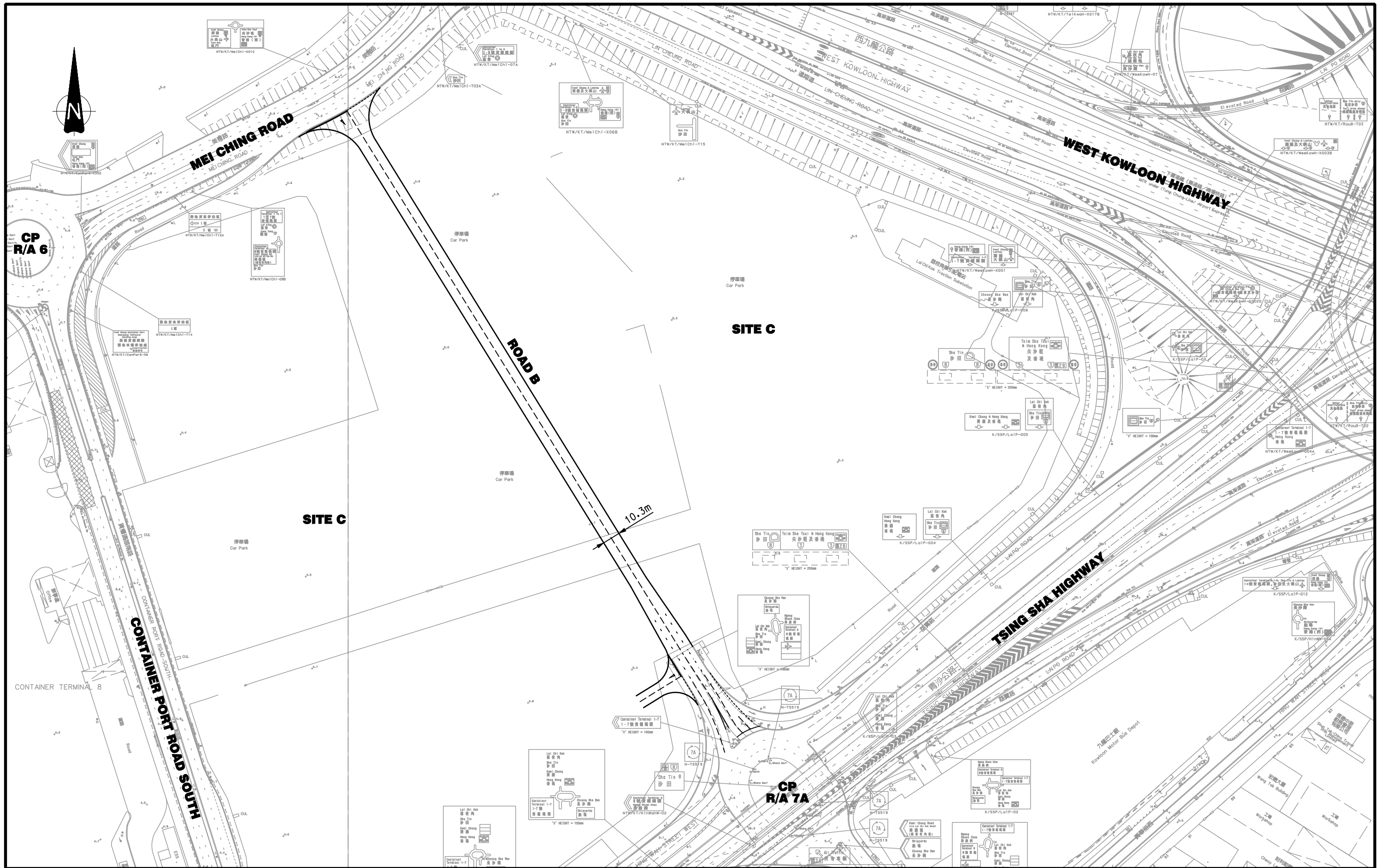
AGREEMENT NO. TD 118/2010 TRAFFIC IMPACT ASSESSMENT FOR LONG-TERM LOGISTICS DEVELOPMENT IN KWAI TSING AREA

**PROPOSED IMPROVEMENT SCHEME F
(NEW FLYOVER AT CP R/A 6)**

Figure No.	A9	Rev.	A
Designed By :	EYE	Scale :	1 : 2000
Checked By :	EDK	Date :	MAY. 2012
Ref. : 29151/F-EXS/A9-A.DGN/TUV/28MAY12			



Rev.	Description	Approved	Date
A	MINOR AMENDMENT	EDK	28MAY12



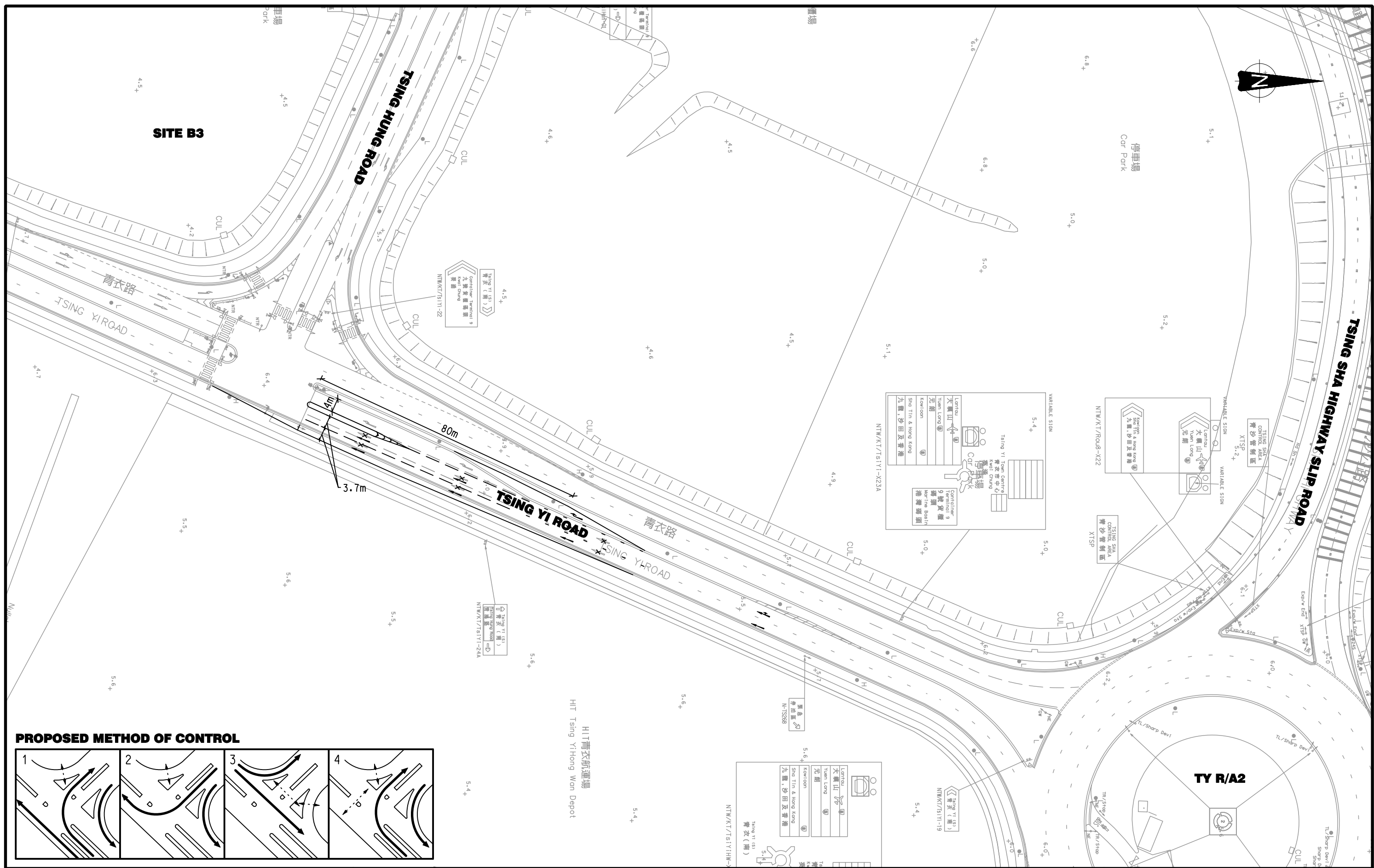
AGREEMENT NO. TD 118/2010 TRAFFIC IMPACT ASSESSMENT FOR LONG-TERM LOGISTICS DEVELOPMENT IN KWAI TSING AREA

**PROPOSED IMPROVEMENT SCHEME G
(NEW ROAD WITHIN SITE C CONNECTING MEI CHING ROAD & CP R/A 7A)**

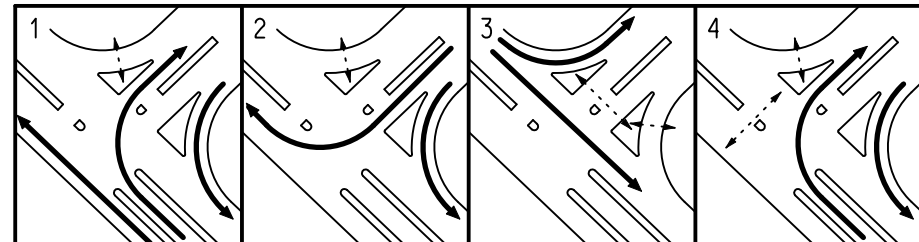
Figure No.	A10	Rev.	A
Designed By:	EYE	Scale:	1 : 2000
Checked By:	EDK	Date:	MAY, 2012
Ref. : 29151/F-EXS/A10-A.DGN/TUV/28MAY12			



Rev.	Description	Approved	Date
A	MINOR AMENDMENT	EDK	28MAY12



PROPOSED METHOD OF CONTROL



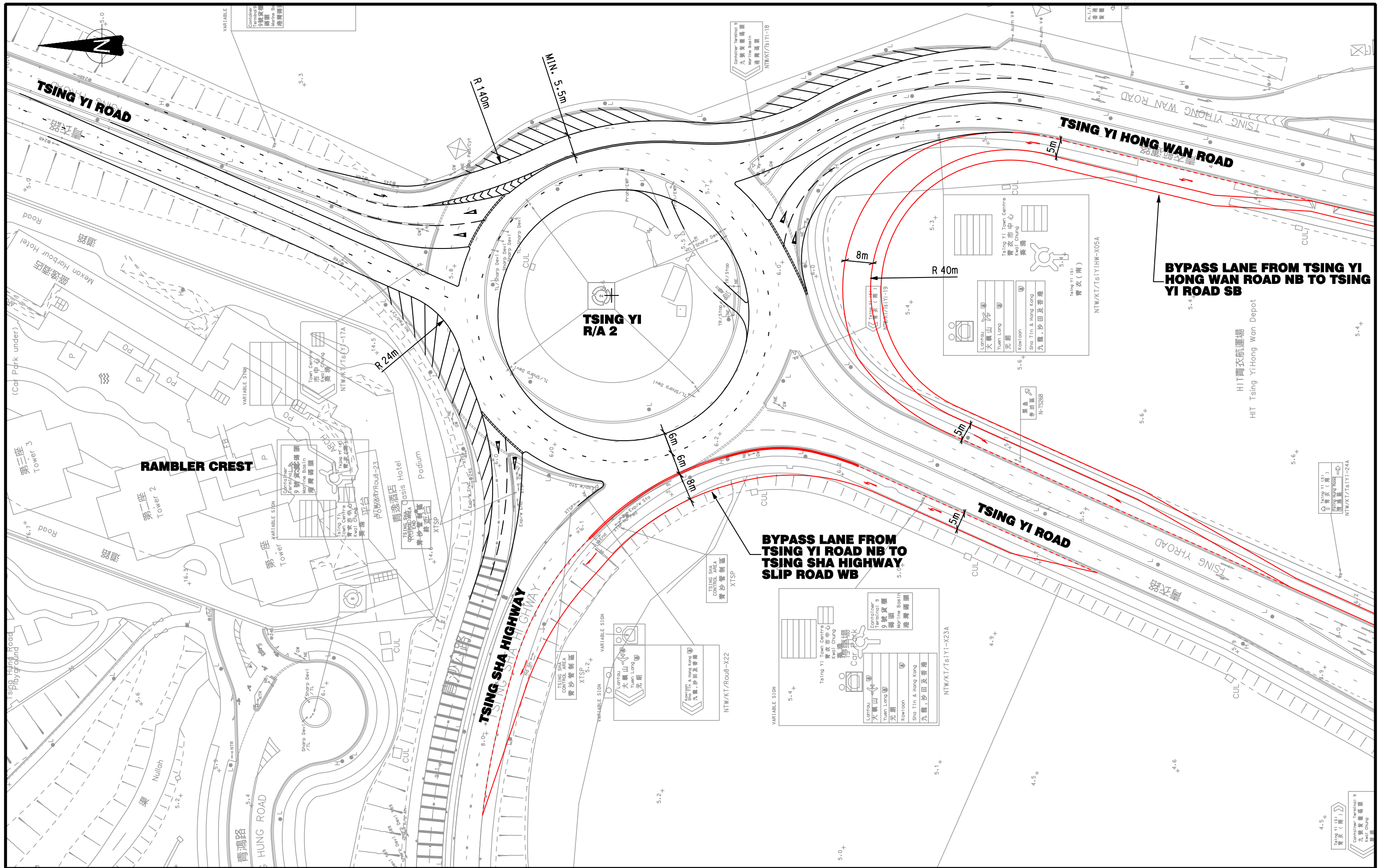
Rev.	Description	Approved	Date
A	MINOR AMENDMENT	EDK	28MAY12

AGREEMENT NO. TD 118/2010 TRAFFIC IMPACT ASSESSMENT FOR LONG-TERM LOGISTICS DEVELOPMENT IN KWAI TSING AREA

**PROPOSED IMPROVEMENT SCHEME H
(MOC MODIFICATION & WIDENING AT TSING HUNG RD / TSING YI RD JUNCTION)**

Figure No.	A11	Rev.	A
Designed By:	EYE	Scale:	1 : 1000
Checked By:	EDK	Date:	MAY, 2012
Ref.: 29151/F-EXS/A11-A.DGN/TUV/28MAY12			





AGREEMENT NO. TD 118/2010 TRAFFIC IMPACT ASSESSMENT FOR LONG-TERM LOGISTICS DEVELOPMENT IN KWAI TSING AREA

**PROPOSED IMPROVEMENT SCHEME 1
(EXCLUSIVE LEFT-TURN LANES AT TY R/A 2)**

Rev.	Description	Approved	Date
A	MINOR AMENDMENT	EDK	28MAY12

Figure No.	A12	Rev.	-
Designed By:	EYE	Scale:	1 : 1000
Checked By:	EDK	Date:	MAY, 2012
Ref.: 29151/F-EXS/A12-A.DGN/TUV/28MAY12			

