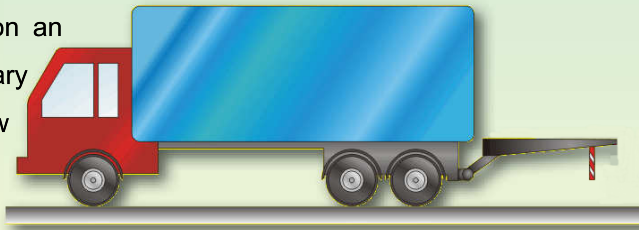


Flag Markings

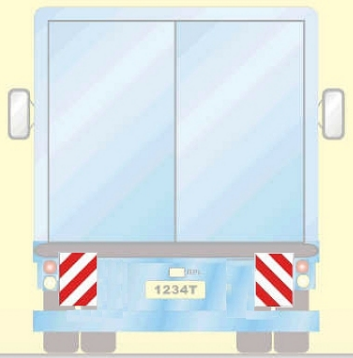
Fitting of a pair of flag markings made of retro-reflective material on an opened tail lift of a stationary vehicle as shown below can increase the visibility and recognition of such projecting mechanism.

(Note: The effectiveness will diminish as the lift is lowered to the ground.)

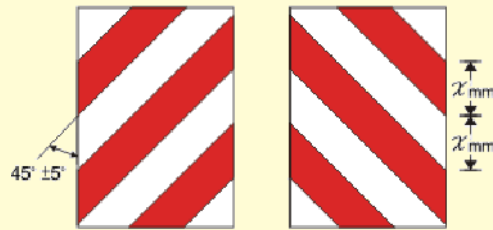


(In open position)

Sample layout of rear mounted flag markings for projecting equipment

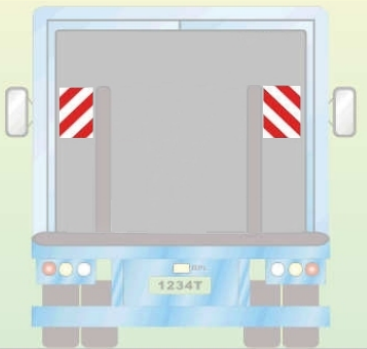


(In open position)



- Red Fluorescent or Retro Reflective Material
- White Retro Reflective Material

Pattern of the flag markings



(In close position)

TIPS FOR IMPROVING THE USE OF VEHICLE MOUNTED TAIL LIFT

RISK



An opened tail lift of a vehicle parked at the road side may pose a hazard to other road users. This leaflet gives some tips on the safe use of vehicle mounted tail lift and on improving the conspicuousness of such vehicles on road.

GENERAL RULES

Personal Safety Gear

Workers should wear fluorescent or retro-reflective vests when loading and unloading goods at the roadside.

Proper Signals

Helpers should be employed to alert/guide pedestrians and other drivers during the operation of the tail lift.

Handbrake On

The tail lift should not be deployed unless the vehicle is stationary and with the handbrake on.

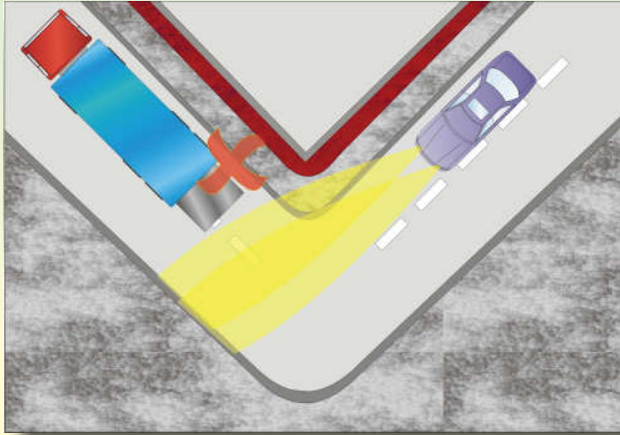
Lighting Aids

In order to improve the conspicuousness of vehicles equipped with tail lift, a vehicle owner may consider fitting additional lighting and retro-reflective aids on his vehicle. However, before a vehicle owner installs such devices, he should study "A Guide to Install the Additional Lighting and Retro-Reflective Aids on Vehicles Equipped with Tail Lift" published at Transport Department website* and should follow the other relevant requirements in Road Traffic (Construction and Maintenance of Vehicles) Regulations, Cap. 374A to avoid causing any unnecessary glare to other road users.

* (<http://www.td.gov.hk/UtilityManager/Publication/upload/tailift.pdf>)

POINT TO NOTE

Never load and unload a vehicle near a street corner because it may pose a hazard to vehicles turning around that corner. As such, the vehicle should be parked at least 8 m away from a street corner.



MEASURES TO BE TAKEN

Traffic Cone

Most tail lift manufacturer would suggest users to keep some distance from other vehicles when loading and unloading goods. As such, putting a pair of retro-reflective traffic cones around 5 m behind an opened tail lift may remind other road users that there are some roadside activities nearby.



Sample layout of traffic cone for advance warning

Contour Markings

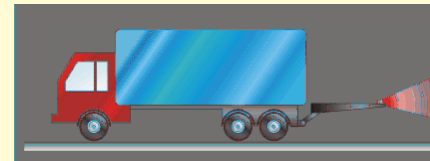
Retro-reflective contour markings can reflect the light emitted from the headlamps of an oncoming vehicle and may increase visibility and recognition of a stationary vehicle and its opened tail lift.



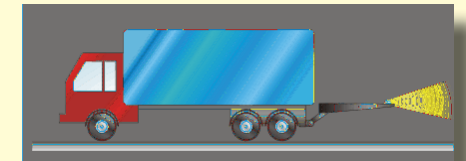
Sample layout of contour markings (Side: yellow/Rear: red)

Additional Rear Position Lamps (Rear Lamps) or Amber Warning Lamps

Fitting of a pair of rear position lamps or amber warning lamps at the outer corners of a tail lift as shown below may increase the visibility and recognition of such projecting mechanism.



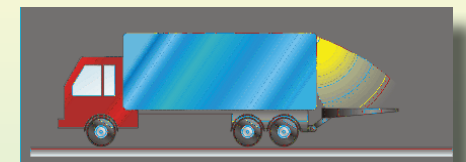
Sample layout of additional rear position lamp (Rearwards: red)



Sample layout of additional amber warning lamp (both rearwards and sideways or rearwards only: amber)

Interior Lighting

Fitting of proper interior lighting to illuminate the working area (e.g. loading platform) surrounding an opened tail lift does not only remind other road users that there are some roadside activities nearby but can also enhance your own safety at work.



Sample layout of interior lighting (in the vicinity of the vehicle)