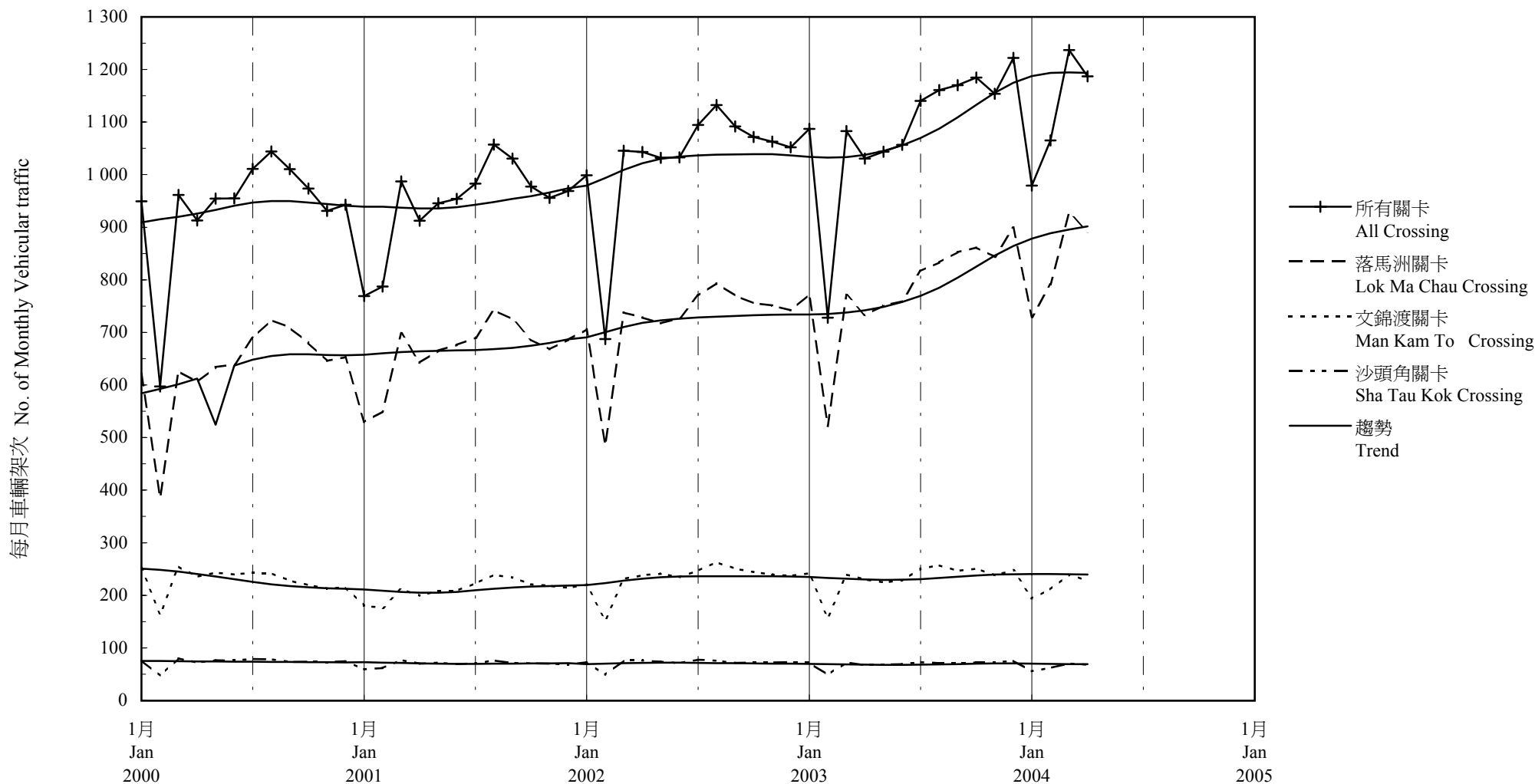


圖 8.1 - 過境車輛交通趨勢

Chart 8.1 - Trend of Cross Boundary Vehicular Traffic

千次
(thousands)

2004/05



趨勢：以「X-11自迴歸-求和-移動平均」方法估算
Trend : Estimated by X-11 ARIMA Method

註：2004年5月的過境車輛架次暫時未有數字。

Note : Figures of monthly vehicles of cross boundary vehicular traffic in May 2004 have not yet been available.