

Know Your Road Traffic Legislation

A Guide to Driving on Expressways

Tai Po (C), Industrial Est
大埔(中)及工業邨
12km

Tai Po (S, N) & Fanling
大埔(南,北)及粉嶺



運輸署




Transport Department

This leaflet is intended to summarize driving rules which apply to roads designated as expressways. These rules are made to enhance road safety and to maintain smooth traffic flow along these roads which mainly have 3 traffic lanes with fast traffic. The law itself is set out in the Road Traffic Ordinance and the Road Traffic (Expressway) Regulations, Chapter 374.

Roads designated as expressways

- A San Tin Highway, Fanling Highway, Tolo Highway and Sha Tin Road
- B Tuen Mun Road and Tsuen Wan Road
- C Island Eastern Corridor
- D Kwun Tong Bypass
- E Tate's Cairn Highway
- F Yuen Long Highway
- G West Kowloon Highway, Tsing Kwai Highway, North West Tsing Yi Interchange, Ting Kau Bridge, Route 3 (Country Park Section) and Yuen Long Approach Road
- H Lantau Link and North Lantau Highway

Legend

-  Expressway
-  (e.g. Kwun Tong Bypass)
-  Other Road



Traffic signs for expressways

- The start and end points of an expressway are indicated by the traffic signs shown below:



Start



End

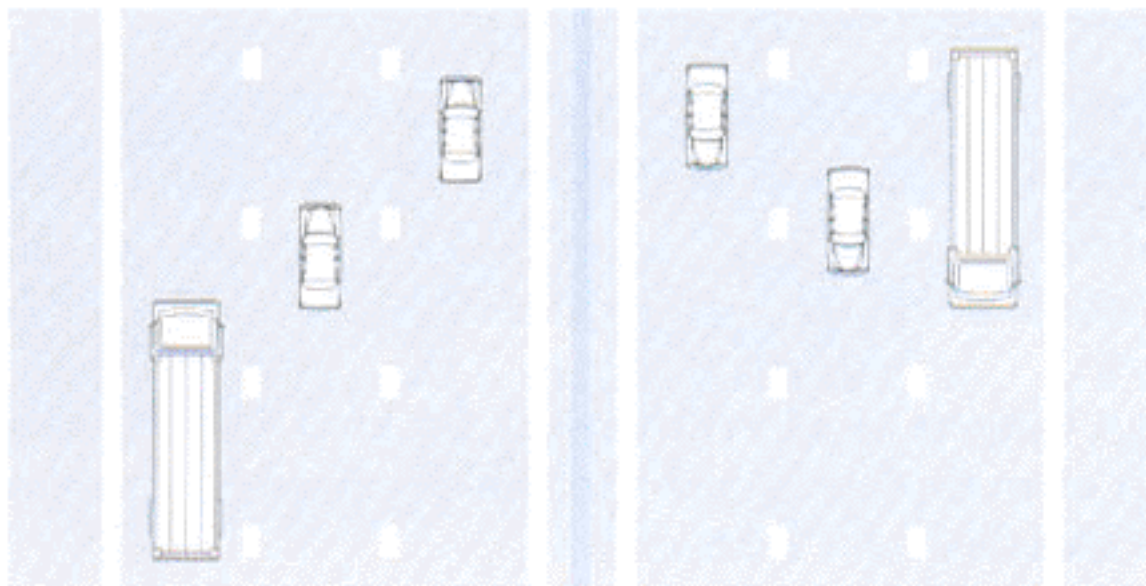
- The following sign will normally be put up in advance of the starting point of an expressway, so that motorists can have sufficient time to choose an alternative route if necessary.

EXPRESSWAY STARTS 500 m AHEAD
快速公路在前面五百米開始

- The background of directional signs on Expressways is green (some blue signs are still in the process of being replaced).

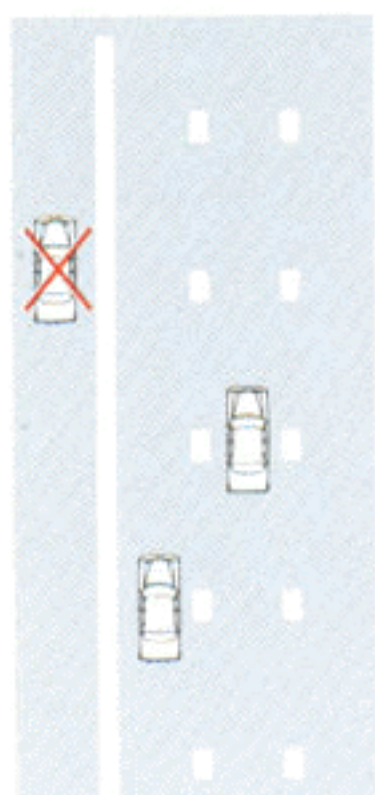
Driving rules for expressways

- Keep to the nearside lane of an expressway unless you are overtaking another vehicle, and overtake only on the offside of the other vehicle.



Hardshoulder

Central reservation
Offside lane
Middle lane
Nearside lane



Hardshoulder

- Medium goods vehicles, heavy goods vehicles and buses are prohibited from using the offside lane of an expressway where the carriageway has 3 or more traffic lanes.
- You must not drive on the hardshoulder or the central reservation of an expressway except during traffic diversions or vehicle breakdowns. The boundaries of the hardshoulder and central reservation with the traffic lanes are normally indicated by continuous white lines.
- You must not U-turn or reverse your vehicle on an expressway.
- You must not stop or park your vehicle on any part of an expressway except for breakdowns or emergencies, and in these situations, you must turn on your hazard warning lights, and if possible drive off the carriageway and stop on the hardshoulder.
- Learner drivers, cyclists, pedestrians and animals are prohibited from using expressways, except for emergencies or with special permission. Wire fences are erected along the boundaries of expressway areas, and you must not climb over or go through these fences.
- Public light buses, special purpose vehicles and any vehicle with an engine capacity under 125 c.c. are not allowed to use an expressway, unless prior permission has been obtained from the Commissioner for Transport.
- The 'Start of Expressway' sign means that the above driving rules are automatically in force, and traffic signs such as 'Keep Left' signs and 'No Stopping' signs will not be further erected along expressways.

Penalty

- You will be committing an offence if you disobey these driving rules. The maximum penalty for first conviction is a fine of \$5,000 and imprisonment for 3 months.

No unauthorized works on expressways

- Authorization by the Director of Highways must be obtained before works of any nature may be carried out on any part of an expressway.
- No flags, banners or advertisement of any kind may be put up on any part of an expressway, except with the written permission of the Commissioner for Transport.

** Please pass this leaflet to other motorists who may wish to know more about the Expressway Legislation.*