

Know Your Road Traffic Legislation

A Guide to Driving on Expressways

Tai Po Market
Tai Po Centre
Industrial Estate

大埔墟

大埔中心

工業邨

½km

EXIT 5

Tai Po(S,N) & Fanling

大埔(南、北)及粉嶺



運輸署

Transport Department

Last updated
July 2022

This leaflet is intended to summarize driving rules which apply to roads designated as expressways. These rules are made to enhance road safety and to maintain smooth traffic flow along these roads which mainly have 3 traffic lanes with fast traffic. The law itself is set out in the Road Traffic Ordinance and the Road Traffic (Expressway) Regulations, Chapter 374.

Roads designated as expressways

- A Sha Tin Road
- B Sha Lek Highway and Tate’s Cairn Highway (Sha Tin Road to Ma On Shan Road)
- C Tai Po Road – Sha Tin (Tolo Highway to Wo Che Estate)
- D Tolo Highway
- E Fanling Highway
- F San Tin Highway
- G Yuen Long Highway (Lam Tei Interchange to Shap Pat Heung Interchange)
- H Tuen Mun Road (Wong Chu Road to Tsuen Wan Road)
- I Tsing Long Highway (excluding Tai Lam Tunnel)
- J North Lantau Highway (Lantau Toll Plaza to Tung Chung Eastern Interchange)
- K Lantau Link and Ma Wan Road
- L Tai Po Tai Wo Road (Tolo Highway to Po Nga Road)
- M Tsing Kwai Highway
- N Tsuen Wan Road
- O Tsing Sha Highway (Cheung Tsing Highway to Eagle’s Nest Tunnel excluding Nam Wan Tunnel)
- P West Kowloon Highway
- Q Island Eastern Corridor (Victoria Park Road to Wing Tai Road)
- R Kwun Tong Bypass
- S Kong Sham Western Highway
- T Part of the Hong Kong-Zhuhai-Macao Bridge -Hong Kong Link Road (excluding Scenic Hill Tunnel)



Notes: For the latest list of expressways, please refer to Transport Department’s homepage > ‘Traffic Notices’ > ‘Notices on Expressways’ > ‘Determination and Delineation of Boundaries of Expressways’ or this QR code.



Traffic signs for expressways

- The start and end points of an expressway are indicated by the traffic signs shown below:



Start



End

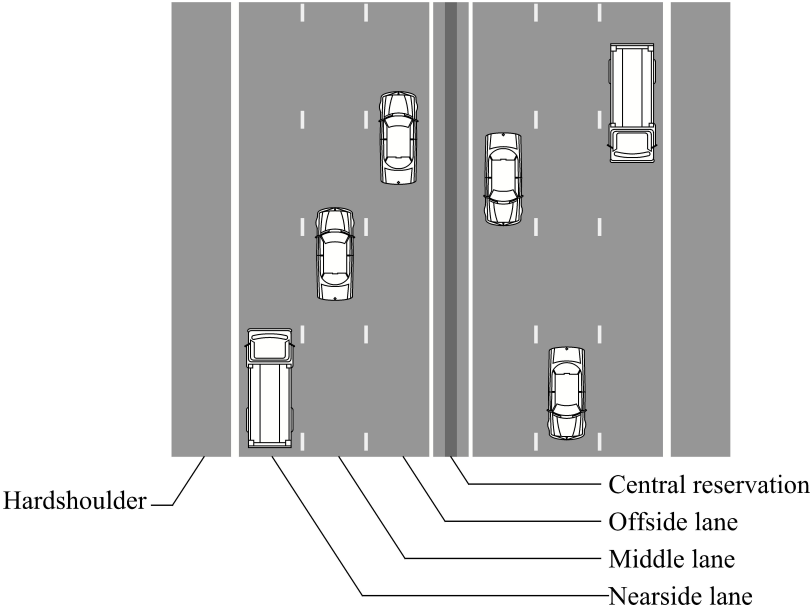
- The following sign will normally be put up in advance of the starting point of an expressway, so that motorists can have sufficient time to choose an alternative route if necessary.



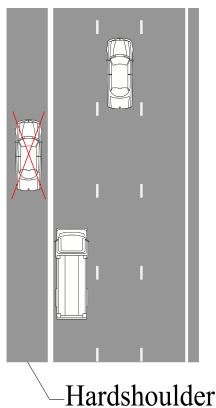
- The background of directional signs on Expressways is green.

Driving rules for expressways

- Keep to the nearside lane of an expressway unless you are overtaking another vehicle, and overtake only on the offside of the other vehicle.



- Medium goods vehicles, heavy goods vehicles and buses are prohibited from using the offside lane of an expressway where the carriageway has 3 or more traffic lanes.
- You must not drive on the hardshoulder or the central reservation of an expressway except during traffic diversions or vehicle breakdowns. The boundaries of the hardshoulder and central reservation with the traffic lanes are normally indicated by continuous white lines.
- You must not U-turn or reverse your vehicle on an expressway.
- You must not stop or park your vehicle on any part of an expressway except for breakdowns or emergencies, and in these situations, you must turn on your hazard warning lights, and if possible drive off the carriageway and stop on the hardshoulder.
- Learner drivers, cyclists, pedestrians and animals are prohibited from using expressways, except for emergencies or with special permission. Wire fences are erected along the boundaries of expressway areas, and you must not climb over or go through these fences.
- Public light buses, special purpose vehicles and any vehicle with an engine capacity under 125 c.c. are not allowed to use an expressway, unless prior permission has been obtained from the Commissioner for Transport.
- The 'Start of Expressway' sign means that the above driving rules are automatically in force, and traffic signs such as 'Keep Left' signs and 'No Stopping' signs will not be further erected along expressways.



Notes: Hong Kong-Zhuhai-Macao Bridge - Hong Kong Link Road is 'a right-driving road'. For guidelines for right-driving road, please refer to Transport Department's homepage > 'Transport in Hong Kong' > 'Land-based Cross Boundary Transport' > 'Access to Hong Kong - Zhuhai - Macao Bridge (HZMB) Hong Kong Port' or this QR code.



Penalty

- You will be committing an offence if you disobey these driving rules. The maximum penalty for first conviction is a fine at Level 2 and imprisonment for 3 months.

No unauthorized works on expressways

- Authorization by the Director of Highways must be obtained before works of any nature may be carried out on any part of an expressway.
- No flags, banners or advertisement of any kind may be put up on any part of an expressway, except with the written permission of the Commissioner for Transport.